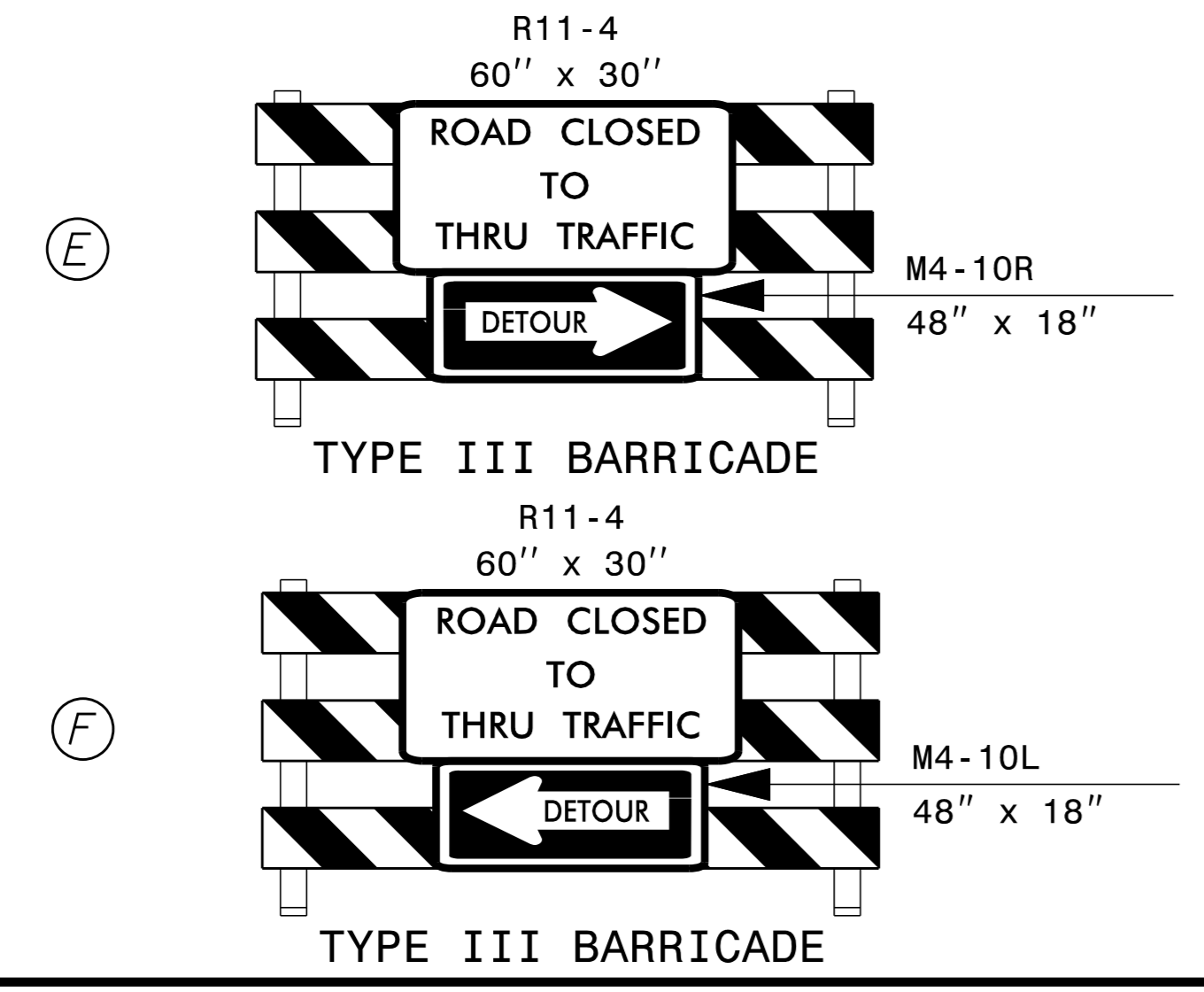
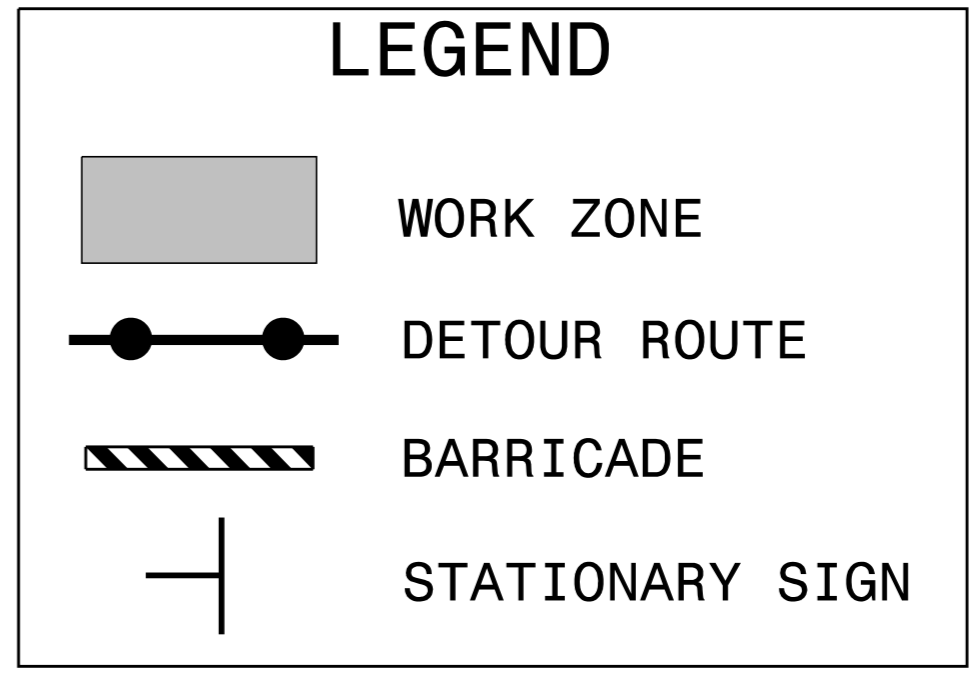
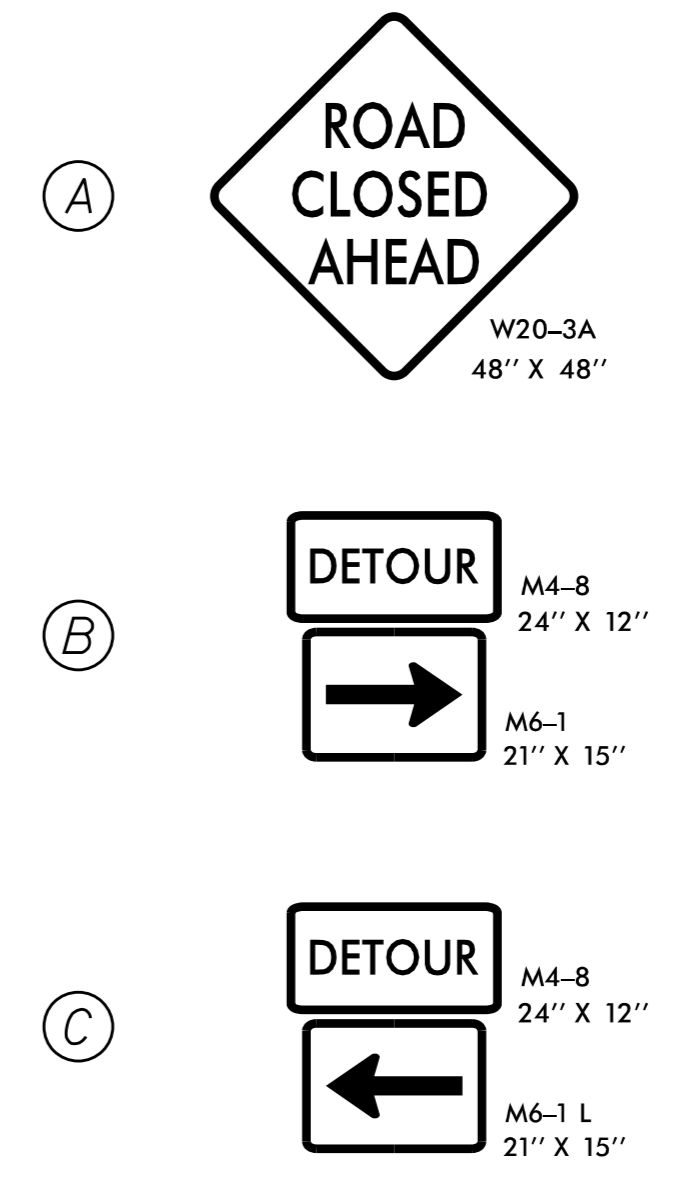
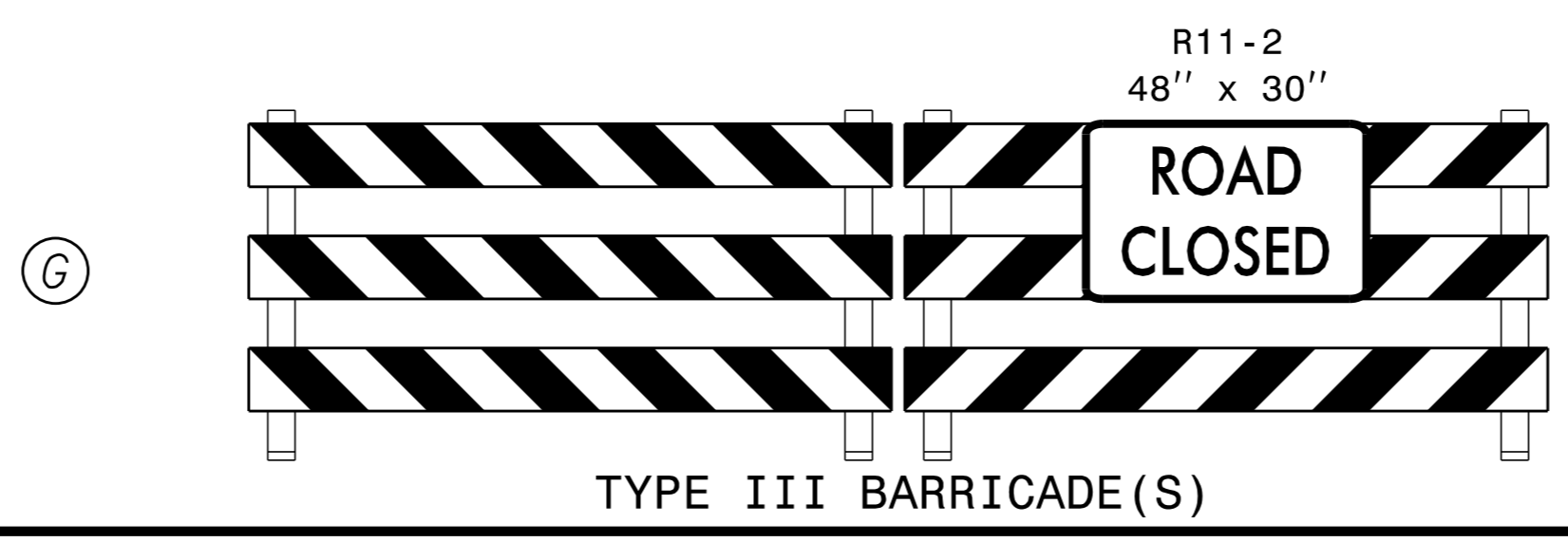


### DETOUR ROUTES FOR MYRTLE ST AND PENNSYLVANIA AVE CLOSURES



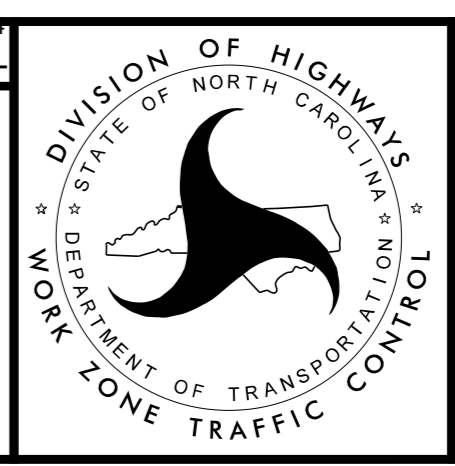
NOTE: SEE SHEET TMP-30 FOR ASSOCIATED 10TH STREET DETOUR



K:\RAL\_Roadway\01036175\_U-3315\TrafficControl\CP\Sheets\U3315\_TMP\_psh32.dgn 11/4/2014

# Kimley»Horn

APPROVED: Jason Pace DATE: 11/3/2014



## TRAFFIC CONTROL DETOUR SHEET