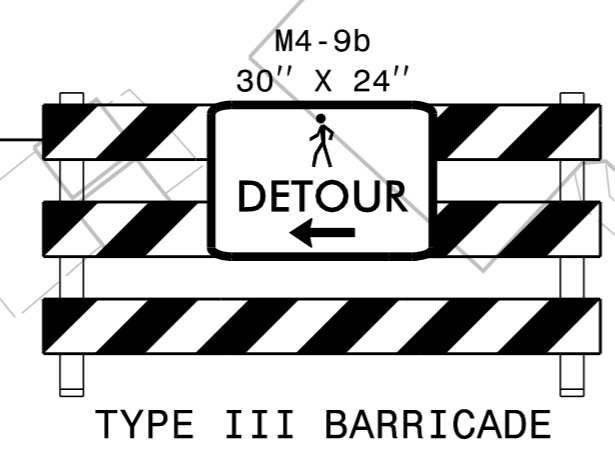


NAD 83/NSRS 2007

NAD 83/NSRS 2007

K:\RAL\_Roadway\01036175\_U-3315\TrafficControl\CP\Sheets\U3315\_TMP\_psh13.dgn  
11/4/2014

10+00



MAINTAIN PEDESTRIANS ALONG TEMPORARY SIDEWALK (SEE TMP-7)

-Y7-  
14TH STREET  
(SR 1703)

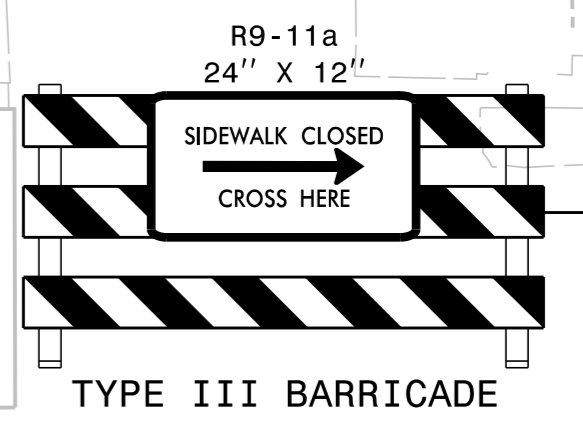
BEGIN CONSTRUCTION  
-Y2- Sta. 11+15

MATCH LINE -Y7- STA 14+50 (SEE SHEET TMP-7)

END CONSTRUCTION  
-Y2- Sta. 26+60

INSTALL SAFETY FENCE ALONG BACK OF EXISTING SIDEWALK AND MAINTAIN EXISTING SIDEWALK.

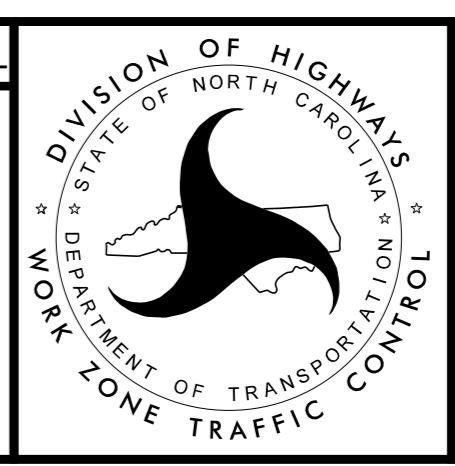
-Y7-  
14TH STREET  
(SR 1703)



MATCH LINE -Y7- STA 22+00 (SEE SHEET TMP-7)

- WORK AREA
- PAVEMENT REMOVAL
- WEDGING

APPROVED: Jason Pace DATE: 11/19/2014



# Kimley»Horn

## TRAFFIC CONTROL PHASE 1