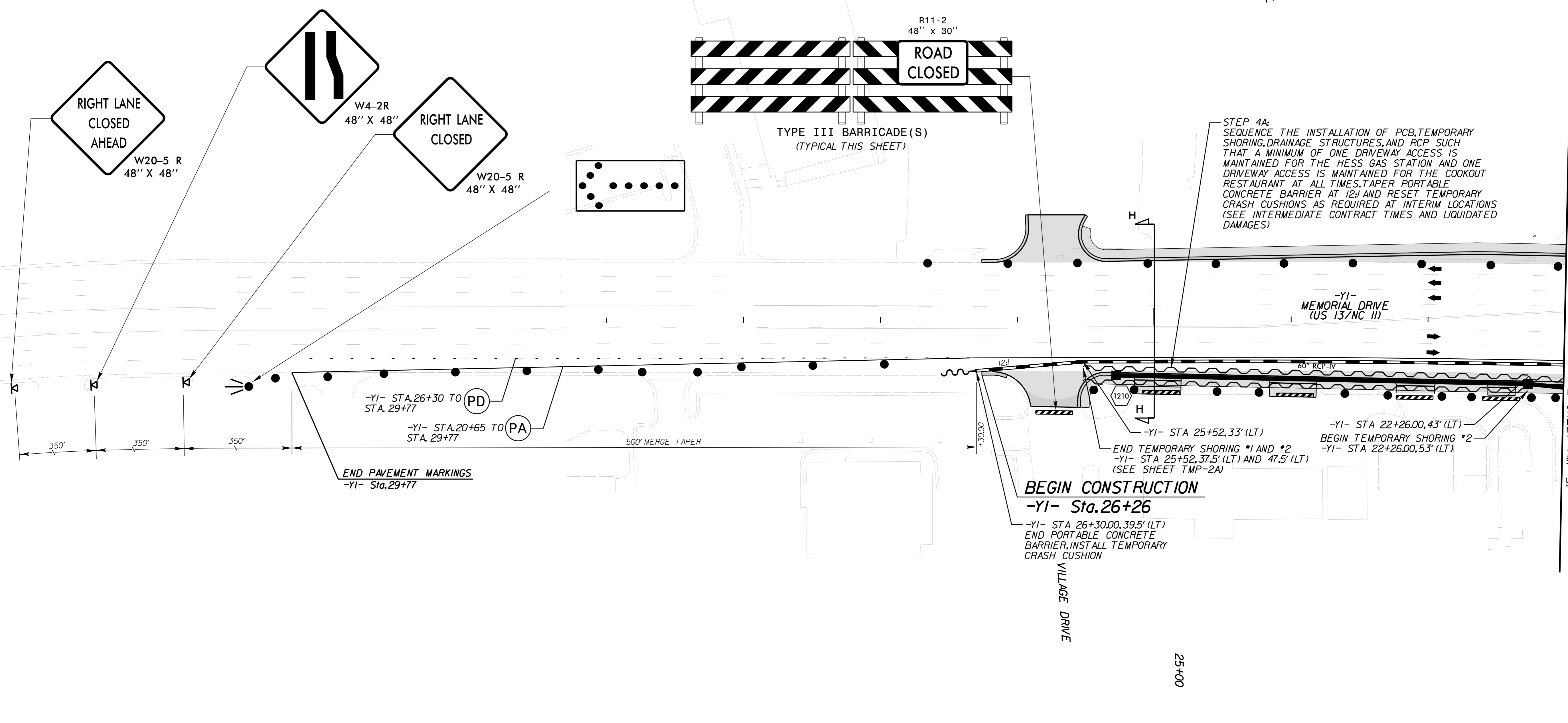


NAD 83/NSRS 2007

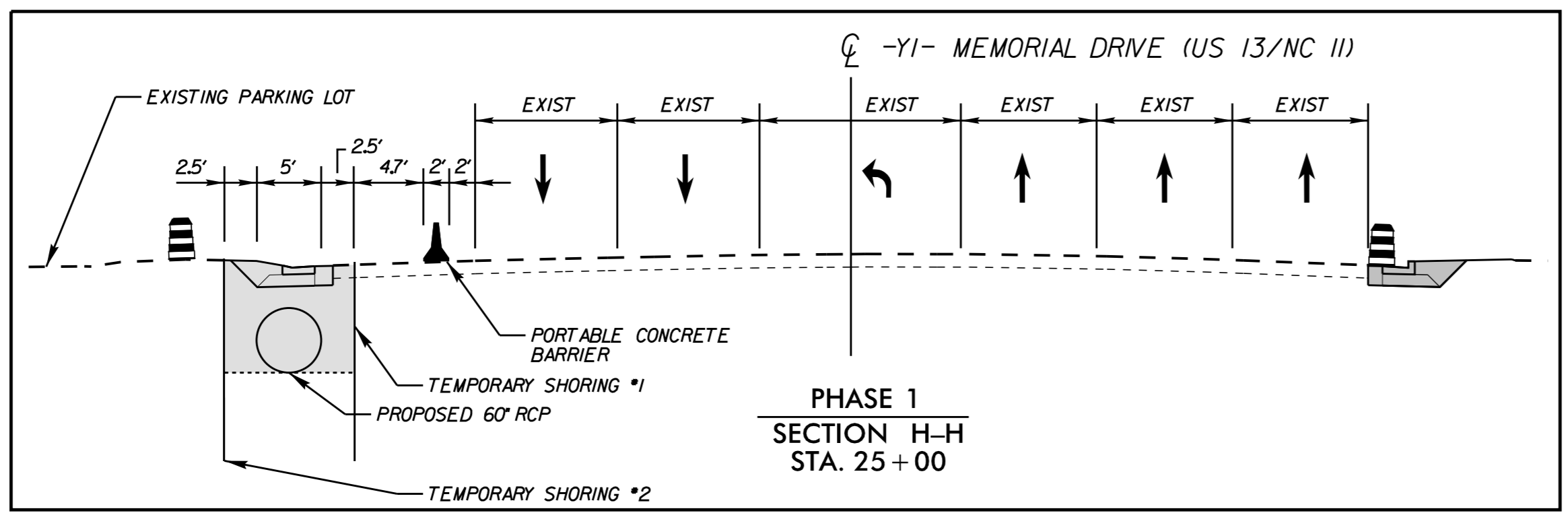


STEP 4A:
SEQUENCE THE INSTALLATION OF PCB, TEMPORARY SHORING, DRAINAGE STRUCTURES, AND RCP SUCH THAT A MINIMUM OF ONE DRIVEWAY ACCESS IS MAINTAINED FOR THE HESS GAS STATION AND ONE DRIVEWAY ACCESS IS MAINTAINED FOR THE COOKOUT RESTAURANT AT ALL TIMES. TAPER PORTABLE CONCRETE BARRIER AT 12H AND RESET TEMPORARY CRASH CUSHIONS AS REQUIRED AT INTERIM LOCATIONS (SEE INTERMEDIATE CONTRACT TIMES AND LIQUIDATED DAMAGES)

-YI- STA. 26+30 TO STA. 29+77 (PD)
-YI- STA. 20+65 TO STA. 29+77 (PA)
END PAVEMENT MARKINGS
-YI- Sta. 29+77

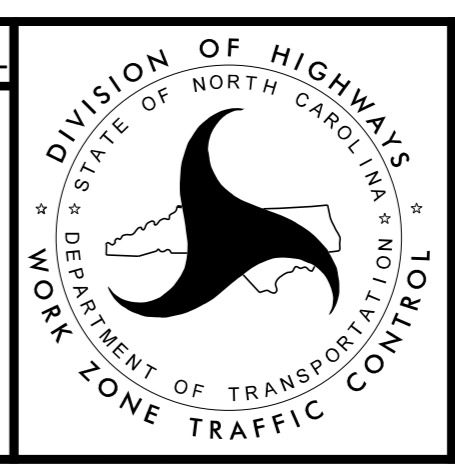
BEGIN CONSTRUCTION
-YI- Sta. 26+26
-YI- STA 26+30.00, 39.5' (LT)
END PORTABLE CONCRETE BARRIER, INSTALL TEMPORARY CRASH CUSHION

-YI- STA 22+26.00, 43' (LT)
BEGIN TEMPORARY SHORING #2
-YI- STA 22+26.00, 53' (LT)



- WORK AREA
- PAVEMENT REMOVAL
- WEDGING

APPROVED: [Signature] DATE: 5/12/2015
NORTH CAROLINA PROFESSIONAL SEAL 033167
ENGINEER JAMES J. PACE



Kimley»Horn

TRAFFIC CONTROL PHASE 1

5/12/2015 \$FILEL\$