

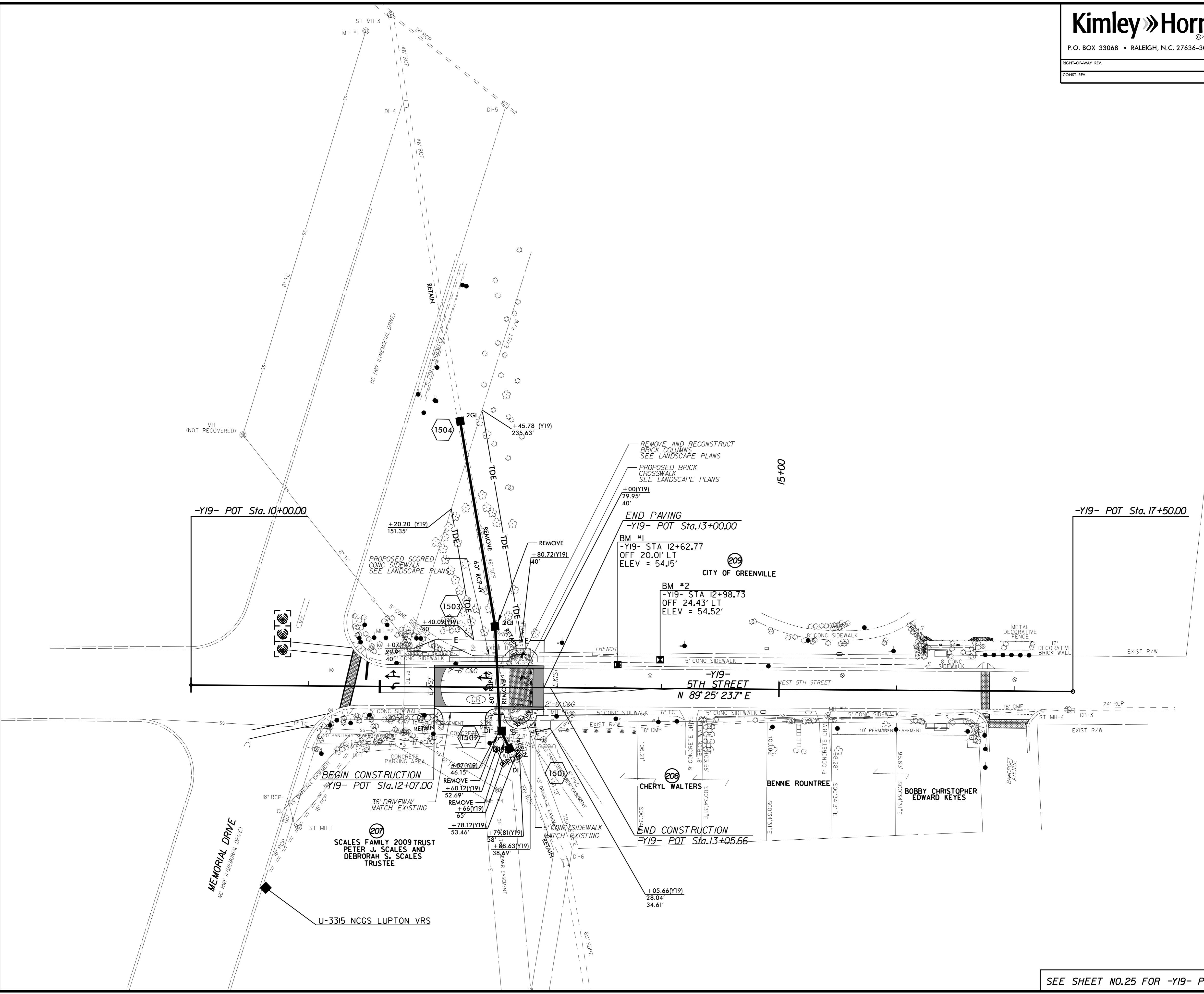
Kimley»Horn
 P.O. BOX 33068 • RALEIGH, N.C. 27636-3068

PROJECT REFERENCE NO. U-3315	SHEET NO. 15
RW SHEET NO.	
ROADWAY ENGINEER	HYDRAULICS ENGINEER
7/2/2015	7/2/2015

RIGHT-OF-WAY REV.
CONST. REV.

REVISIONS

NAD 83/NSRS 2007



- NOTES:
- 1] TIE TO EXIST CURB AND GUTTER AT EXIST CONCRETE JOINT
TRANSITION 2'-6\" C&G TO MATCH EXIST GUTTER WIDTH AS NECESSARY
 - 2] SAWCUT AND REMOVE OR MILL EXISTING ASPHALT PAVEMENT OR CONCRETE PAVEMENT TO TIE-IN DRIVEWAY
 - 3] TIE TO EXISTING CONCRETE SIDEWALK
 - 4] REMOVE EXISTING STORM DRAINAGE STRUCTURE
 - 5] PROP MAST ARM SIGNAL POLE (SEE SIGNAL PLANS)

SEE SHEET NO.25 FOR -Y19- PROFILE

K:\RAL_Roadway\01036715 U-3315\Roadway\Pro\U3315_rdy_pst15.dgn
6/26/2015