

REVISIONS

(17) JONATHAN SUTTON & TODD SUTTON

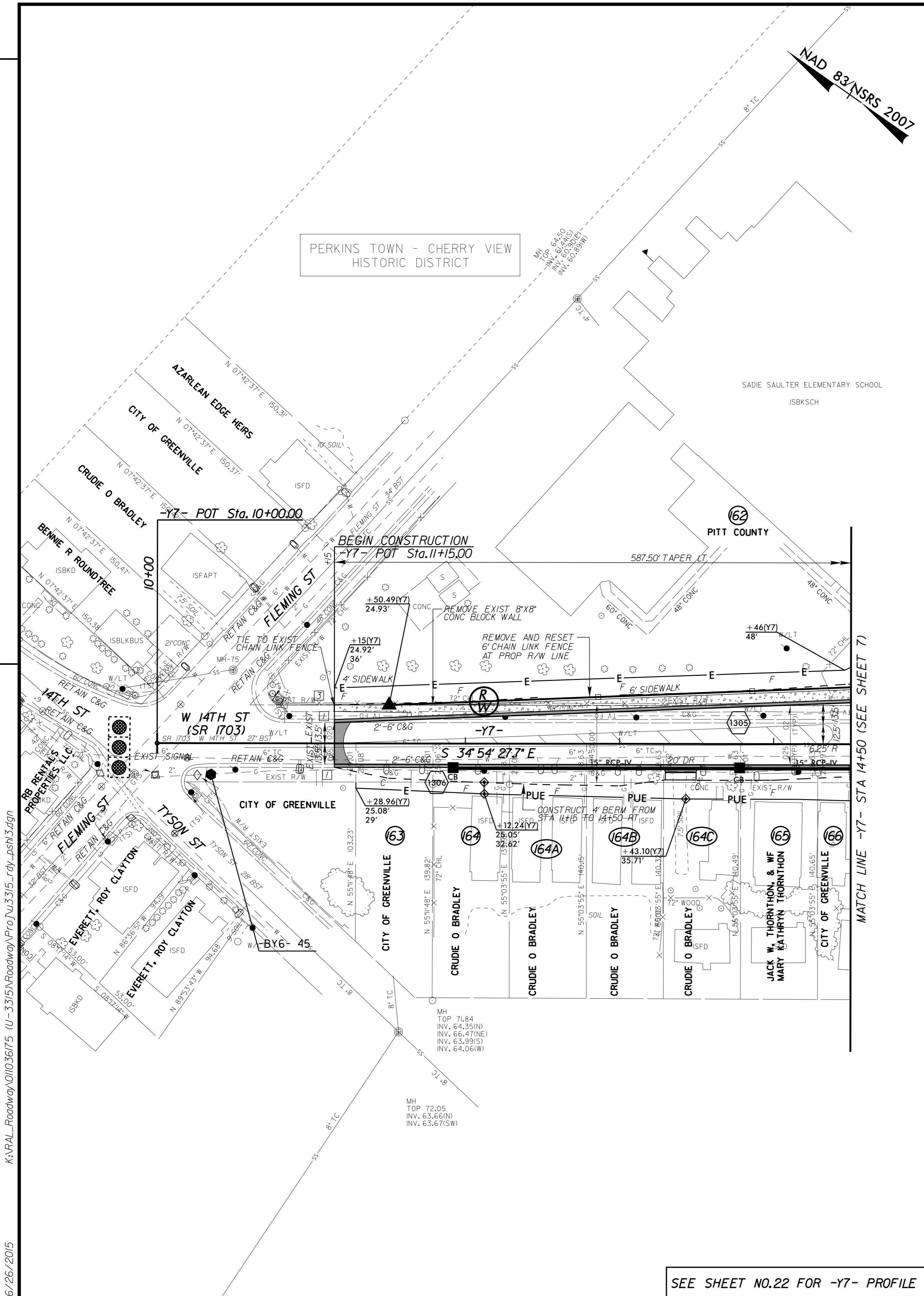
- NOTES:
- 1) TIE TO EXIST CURB AND GUTTER AT EXIST CONCRETE JOINT
  - 2) SAWCUT AND REMOVE OR MILL EXISTING ASPHALT PAVEMENT OR CONCRETE PAVEMENT TO TIE-IN DRIVEWAY
  - 3) TIE TO EXISTING CONCRETE SIDEWALK STRUCTURE
  - 4) REMOVE EXISTING STORM DRAINAGE STRUCTURE
  - 5) PROP MAST ARM SIGNAL POLE (SEE SIGNAL PLANS)

**Kimley Horn**  
 P.O. BOX 33068 • RALEIGH, N.C. 27636-3068

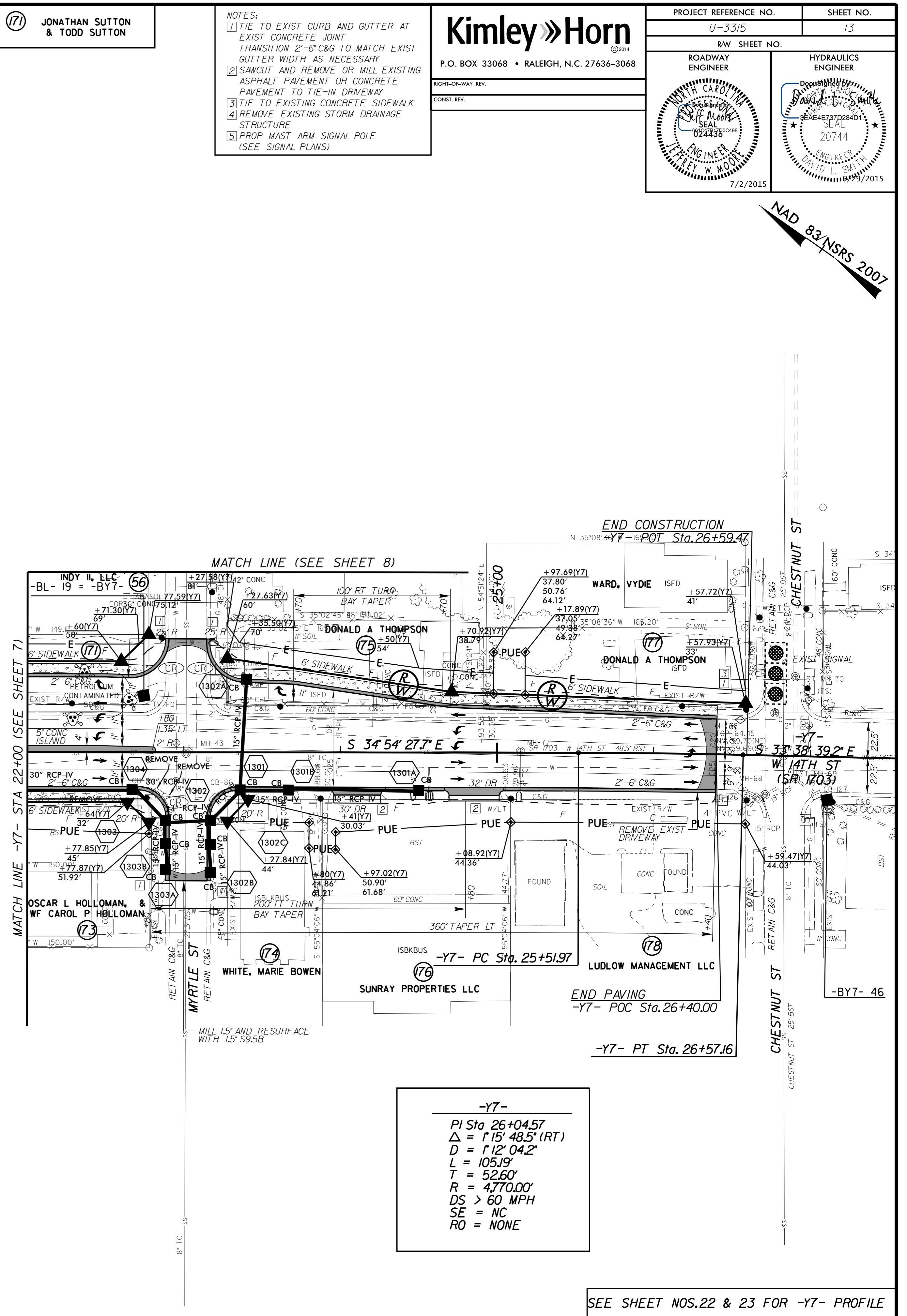
ROADWAY ENGINEER  
 HYDRAULICS ENGINEER

7/2/2015

PROJECT REFERENCE NO. U-3315	SHEET NO. 13
RW SHEET NO.	



SEE SHEET NO.22 FOR -Y7- PROFILE



-Y7-  
 PI Sta 26+04.57  
 $\Delta = 1'15' 48.5'' (RT)$   
 $D = 1'12' 04.2''$   
 $L = 105.19'$   
 $T = 52.60'$   
 $R = 4,770.00'$   
 $DS > 60 MPH$   
 $SE = NC$   
 $RO = NONE$

SEE SHEET NOS.22 & 23 FOR -Y7- PROFILE

K:\RAL\_Roadway\01036175\_U-3315\Roadway\Pro\U-3315\_rdy\_psh13.dgn 6/26/2015