

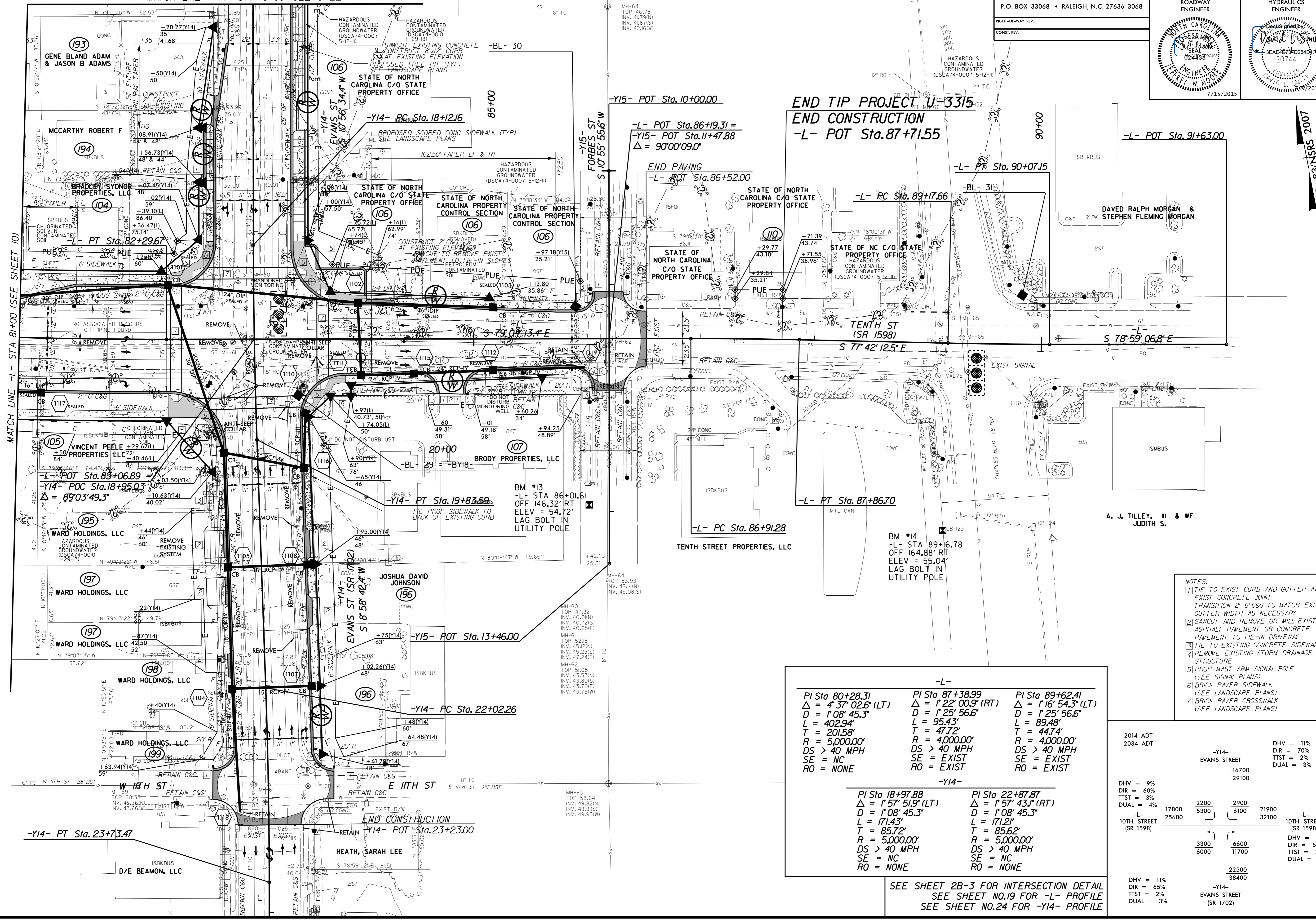
MATCH LINE -Y14- STA 16+00 (SEE SHEET 14)

**END TIP PROJECT U-3315
END CONSTRUCTION
-L- POT Sta. 87+71.55**

NAD 83 N/S/S 2007

REVISIONS

MATCH LINE -L- STA 81+00 (SEE SHEET 10)



- NOTES:
- 1) TIE TO EXIST CURB AND GUTTER AT EXIST CONCRETE JOINT. TRANSITION 2'-6" C&G TO MATCH EXIST GUTTER WIDTH AS NECESSARY.
 - 2) SAWCUT AND REMOVE OR MILL EXISTING ASPHALT PAVEMENT OR CONCRETE PAVEMENT TO TIE-IN DRIVEWAY.
 - 3) TIE TO EXISTING CONCRETE SIDEWALK.
 - 4) REMOVE EXISTING STORM DRAINAGE STRUCTURE.
 - 5) PROP MAST ARM SIGNAL POLE (SEE SIGNAL PLANS).
 - 6) BRICK PAVER SIDEWALK (SEE LANDSCAPE PLANS).
 - 7) BRICK PAVER CROSSWALK (SEE LANDSCAPE PLANS).

-L-		
Pi Sta 80+28.31	Pi Sta 87+38.99	Pi Sta 89+62.41
$\Delta = 4' 37" 02.6" (LT)$	$\Delta = 1' 22" 00.9" (RT)$	$\Delta = 1' 16" 54.3" (LT)$
D = 1' 08' 45.3"	D = 1' 25' 56.6"	D = 1' 25' 56.6"
L = 402.94'	L = 95.43'	L = 89.48'
T = 201.58'	T = 47.72'	T = 44.74'
R = 5,000.00'	R = 4,000.00'	R = 4,000.00'
DS > 40 MPH	DS > 40 MPH	DS > 40 MPH
SE = NC	SE = EXIST	SE = EXIST
RO = NONE	RO = EXIST	RO = EXIST

-Y14-	
Pi Sta 18+97.88	Pi Sta 22+87.87
$\Delta = 1' 57" 51.9" (LT)$	$\Delta = 1' 57" 43.1" (RT)$
D = 1' 08' 45.3"	D = 1' 08' 45.3"
L = 171.43'	L = 171.21'
T = 85.72'	T = 85.62'
R = 5,000.00'	R = 5,000.00'
DS > 40 MPH	DS > 40 MPH
SE = NC	SE = NC
RO = NONE	RO = NONE

2014 ADT	2034 ADT	EVANS STREET	DHVs	DIR	TTST	DUAL
16700	29100		11%	70%	2%	3%
17800	25600	17800	9%	60%	3%	4%
2200	5300	2200	65%	3%	3%	4%
2900	6100	2900	65%	3%	3%	4%
21900	32100	21900	9%	55%	3%	4%
3300	6000	3300	11%	65%	3%	3%
6000	11700	6000	65%	3%	3%	3%
22500	38400	22500	11%	70%	2%	3%
38400		38400				

SEE SHEET 2B-3 FOR INTERSECTION DETAIL
SEE SHEET NO.19 FOR -L- PROFILE
SEE SHEET NO.24 FOR -Y14- PROFILE

K:\RAL_Roadway\01036715_U-3315\Roadway\Pro\U-3315_rdy_pstl1.dgn
7/19/2015