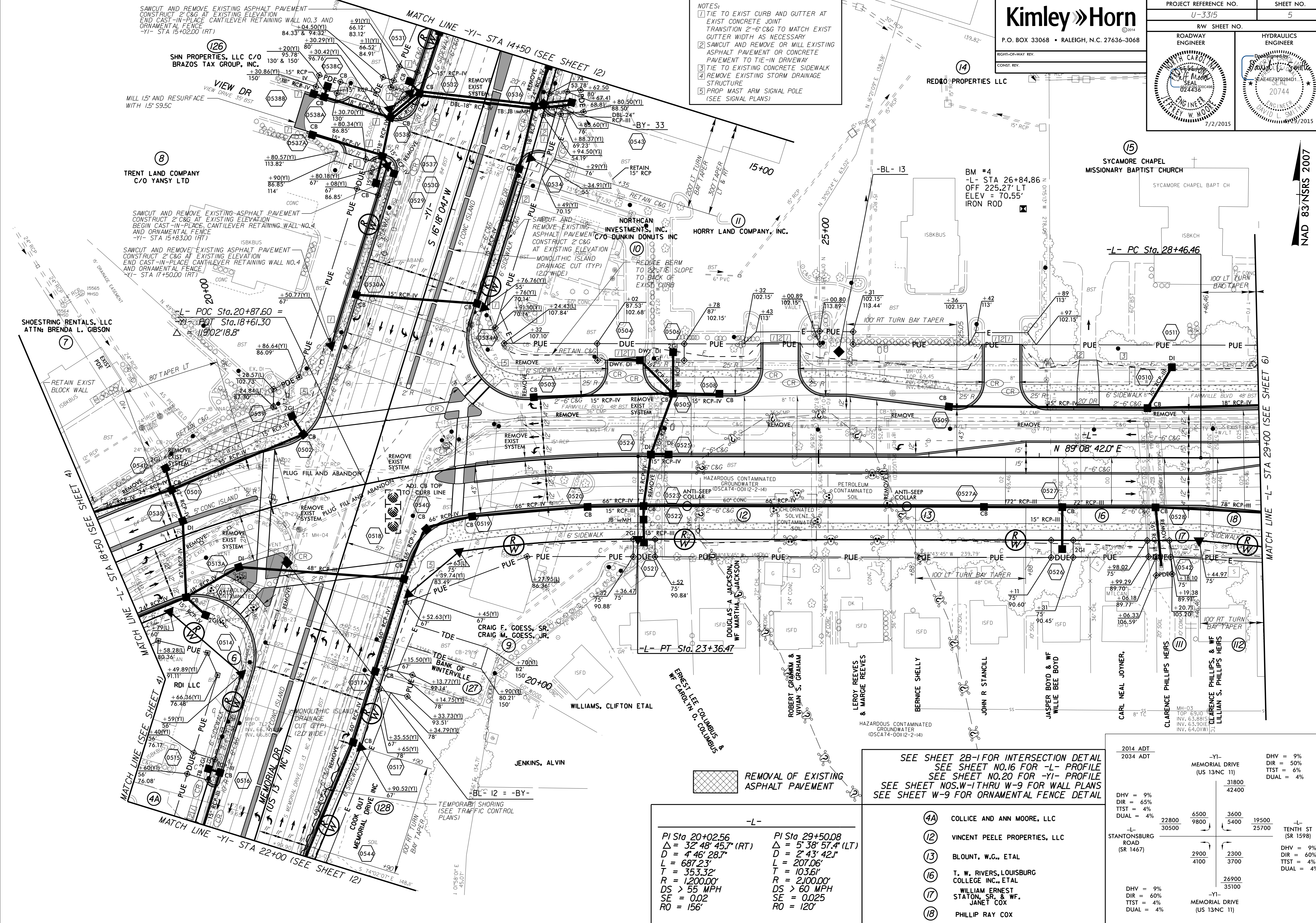


PROJECT REFERENCE NO. U-3315	SHEET NO. 5
RW SHEET NO.	HYDRAULICS ENGINEER
ROADWAY ENGINEER	ENGINEER
7/2/2015	7/2/2015

- NOTES:
- TIE TO EXIST CURB AND GUTTER AT EXIST CONCRETE JOINT TRANSITION 2'-6" C&G TO MATCH EXIST GUTTER WIDTH AS NECESSARY
 - SAWCUT AND REMOVE OR MILL EXISTING ASPHALT PAVEMENT OR CONCRETE PAVEMENT TO TIE-IN DRIVEWAY
 - TIE TO EXISTING CONCRETE SIDEWALK
 - REMOVE EXISTING STORM DRAINAGE STRUCTURE
 - PROP MAST ARM SIGNAL POLE (SEE SIGNAL PLANS)



REVISIONS

NAD 83/NSRS 2007

REMOVAL OF EXISTING ASPHALT PAVEMENT

SEE SHEET 2B-1 FOR INTERSECTION DETAIL
 SEE SHEET NO.16 FOR -L- PROFILE
 SEE SHEET NO.20 FOR -YI- PROFILE
 SEE SHEET NOS.W-1 THRU W-9 FOR WALL PLANS
 SEE SHEET W-9 FOR ORNAMENTAL FENCE DETAIL

-L-	-L-
PI Sta 20+02.56	PI Sta 29+50.08
$\Delta = 32' 48" 45.7" (RT)$	$\Delta = 5' 38' 57.4" (LT)$
$D = 4' 46' 28.7"$	$D = 2' 43' 42.1"$
$L = 687.23'$	$L = 207.06'$
$T = 353.32'$	$T = 103.61'$
$R = 1,200.00'$	$R = 2,100.00'$
$DS > 55 MPH$	$DS > 60 MPH$
$SE = 0.02$	$SE = 0.025$
$RO = 156'$	$RO = 120'$

- (4A) COLLICE AND ANN MOORE, LLC
- (12) VINCENT PEELE PROPERTIES, LLC
- (13) BLOUNT, W.G., ETAL
- (16) T. W. RIVERS, LOUISBURG COLLEGE INC., ETAL
- (17) WILLIAM ERNEST STANTON, SR. & WF. JANET COX
- (18) PHILLIP RAY COX

2014 ADT	2034 ADT	-YI- MEMORIAL DRIVE (US 13NC 11)	DHV = 9%	DIR = 50%	TTST = 6%	DUAL = 4%		
		31800						
		42400						
DHV = 9%	DIR = 65%	TTST = 4%	DUAL = 4%					
22800	6500	3600	19500	-L- TENTH ST (SR 1598)	DHV = 9%	DIR = 60%	TTST = 4%	DUAL = 4%
30500	9800	5400	25700					
2900	2300	3700	26900	-YI- MEMORIAL DRIVE (US 13NC 11)	DHV = 9%	DIR = 60%	TTST = 4%	DUAL = 4%
4100	3100	35100						

K:\RAL_Roadway\01036175 U-3315\Roadway\Pro\U3315_rdy_psr05.dgn

6/26/2015