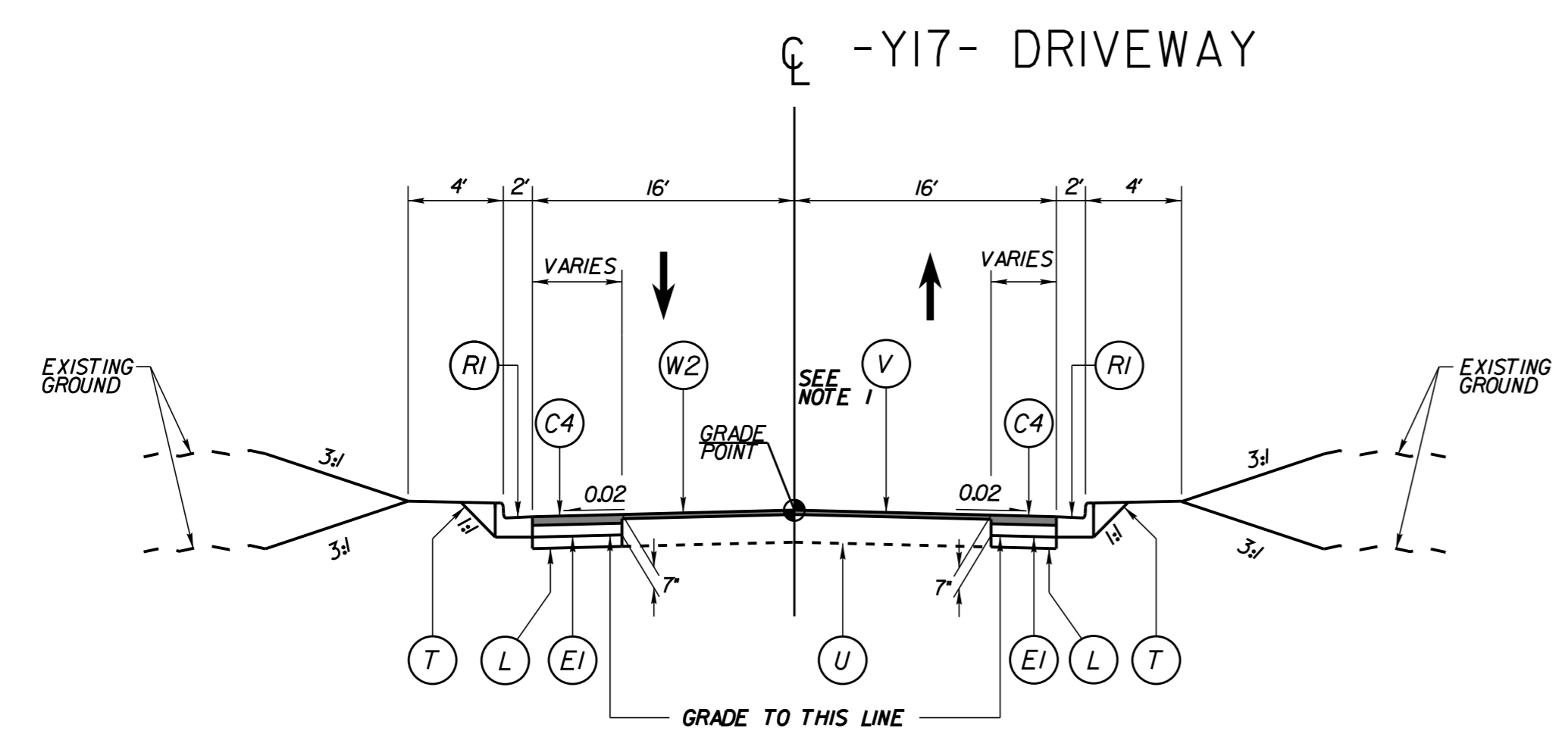
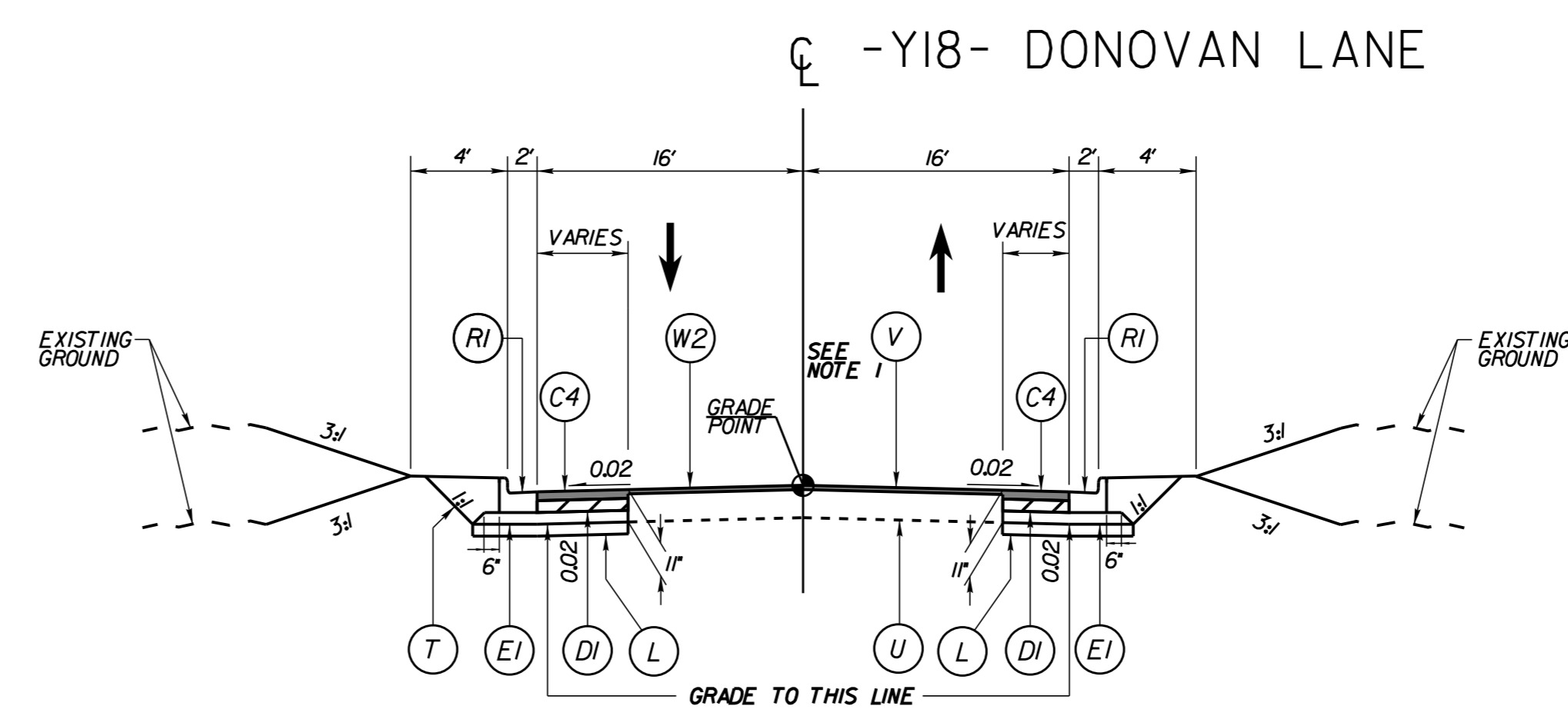


Kimley»Horn
 P.O. BOX 33068 • RALEIGH, N.C. 27636-3068
 RIGHT-OF-WAY REV.
 CONST. REV.

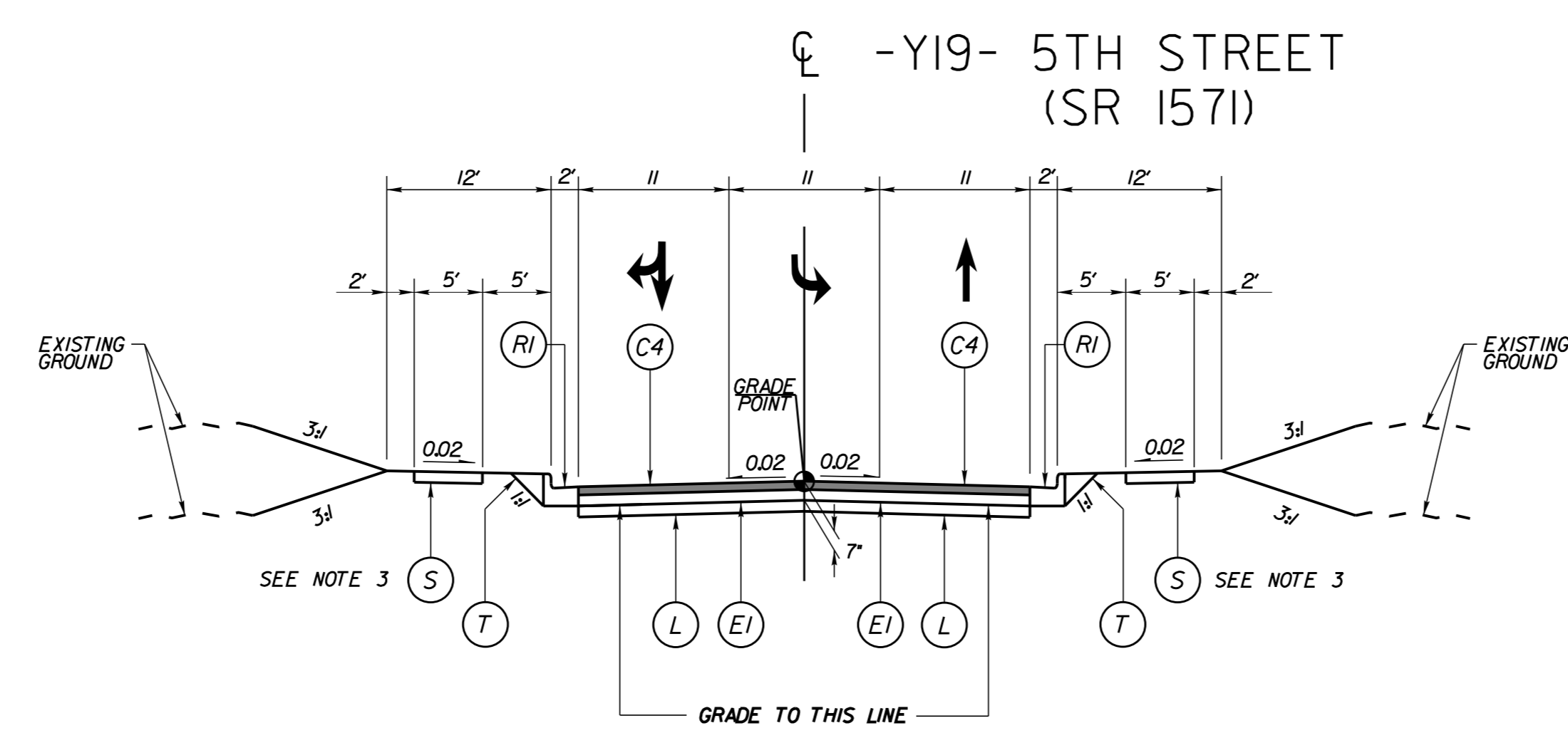
PROJECT REFERENCE NO. U-3315	SHEET NO. 2A-7
RW SHEET NO.	
ROADWAY ENGINEER 6/11/2015	PAVEMENT DESIGN ENGINEER 6/11/2015



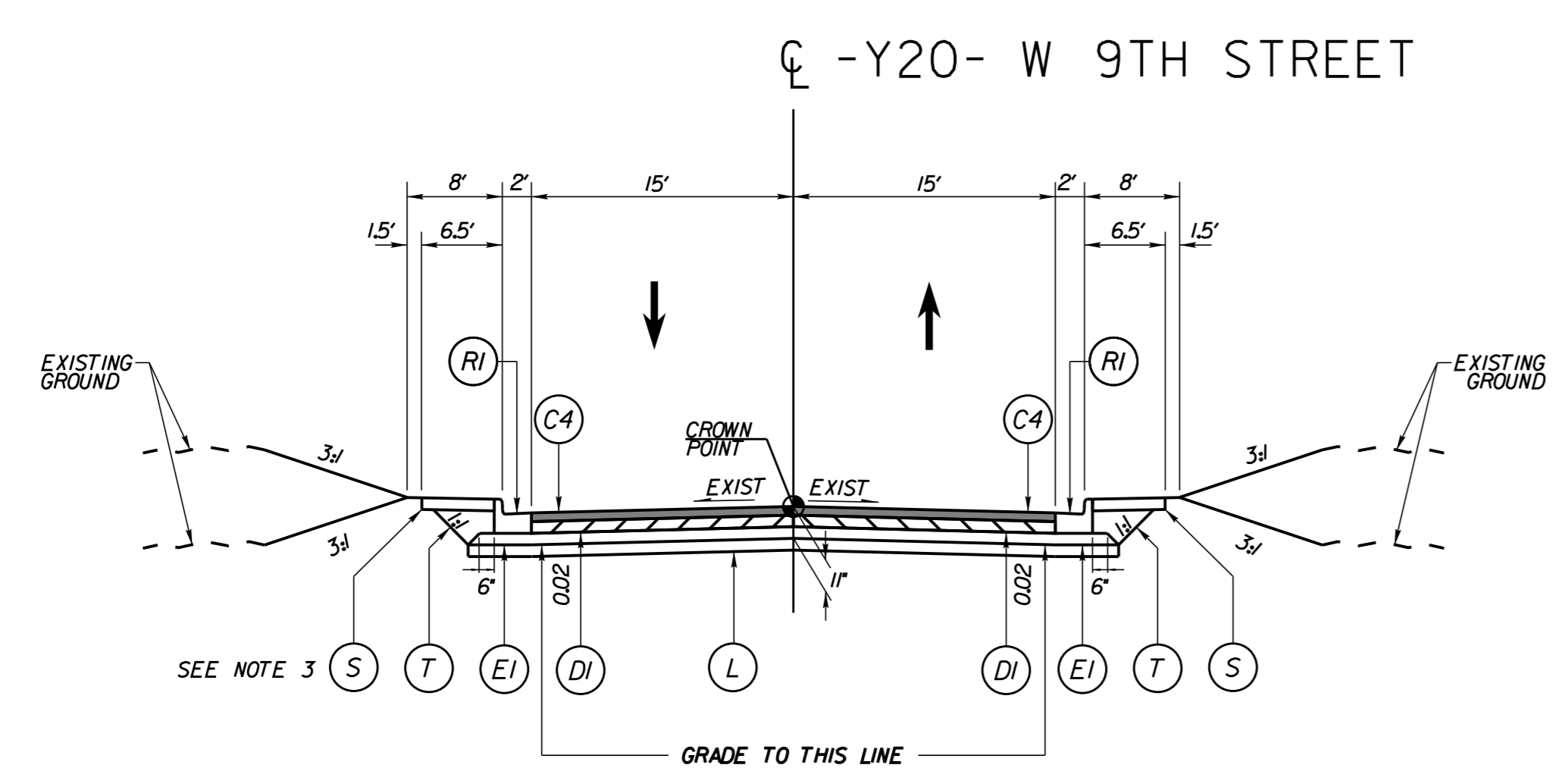
TYPICAL SECTION NO. 15
 -Y17- STA 10+26.33 TO STA 11+79.07



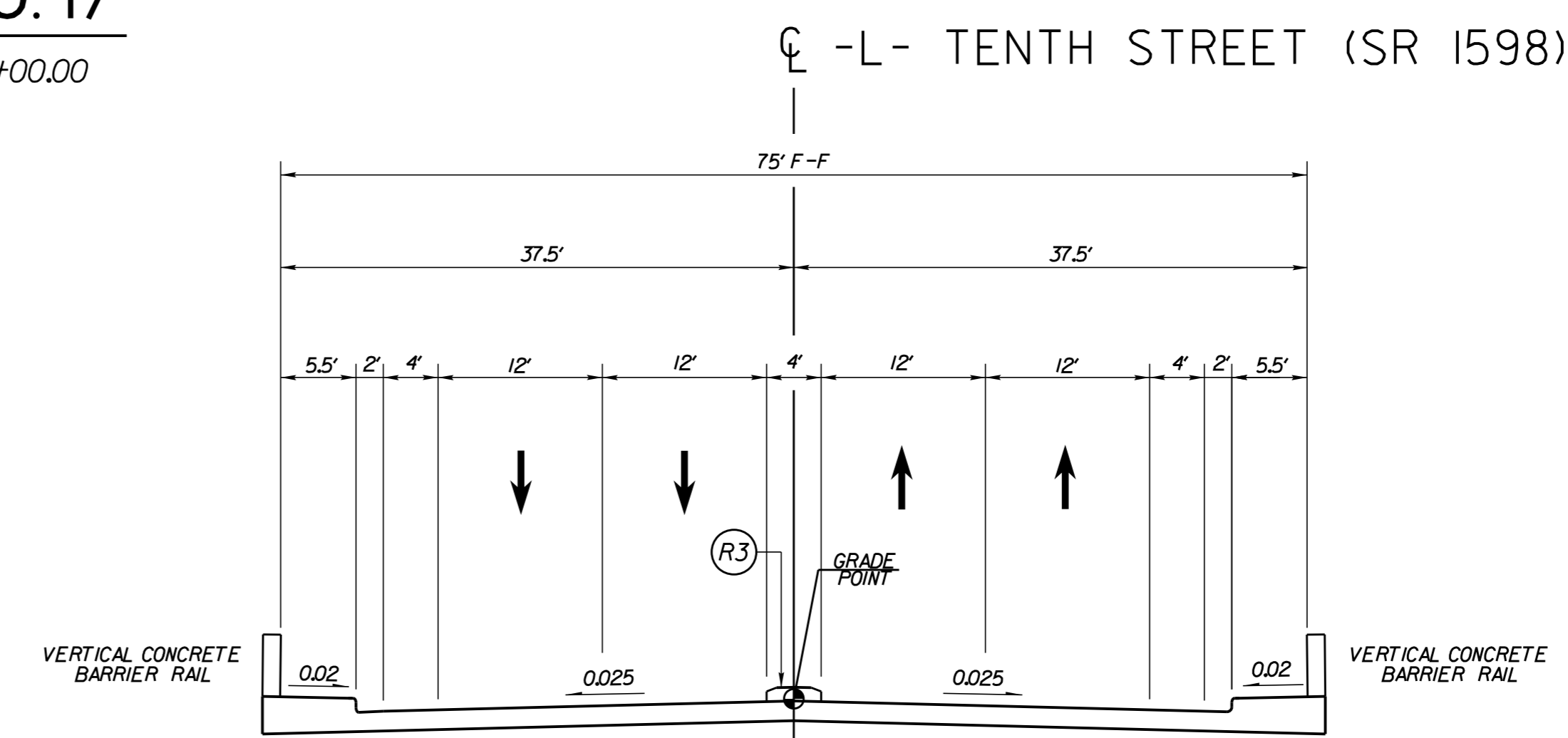
TYPICAL SECTION NO. 16
 -Y18- STA 10+36.00 TO STA 12+36.50



TYPICAL SECTION NO. 17
 -Y19- STA 12+07.00 TO STA 13+00.00



TYPICAL SECTION NO. 18
 -Y20- STA 10+24.22 TO STA 15+18.00
 -Y20- STA 15+36.00 TO STA 21+96.00



TYPICAL SECTION ON STRUCTURE
 -L- STA 64+69.00 TO STA 66+49.00

PAVEMENT SCHEDULE

C2	1.5" S9.5B
C3	1.5" S9.5C
C4	3" S9.5B
C5	3" S9.5C
C6	VAR. DEPTH S9.5B
C7	VAR. DEPTH S9.5C
D1	4" 119.0B
D2	4" 119.0C
D3	VAR. DEPTH 119.0B
D4	VAR. DEPTH 119.0C
E1	4" B25.0B
E2	4" B25.0C
E3	4.5" B25.0C
E4	5" B25.0C
E5	VAR. DEPTH B25.0B
E6	VAR. DEPTH B25.0C
L	CLASS IV AGGREGATE STABILIZATION
N	GEOTEXTILE FOR PAVEMENT STABILIZATION
RI	2'-6" CONCRETE CURB & GUTTER
R2	1'-6" CONCRETE CURB & GUTTER
R3	5' MONOLITHIC CONCRETE ISLAND (KEYED-IN)
S	4" CONCRETE SIDEWALK
T	EARTH MATERIAL
U	EXISTING PAVEMENT
V	MILLING EXISTING PAVEMENT (VARIABLE)
W	VARIABLE DEPTH ASPHALT PAVEMENT

- NOTES:**
 1. MILL NOTCH TO KEY-IN S9.5B/S9.5C AT ENDS OF -Y- LINES
 2. SIDEWALK LOCATIONS AND WIDTHS VARY (SEE PLANS)
 3. MATCH EXISTING SIDEWALK WIDTH
 4. PAVEMENT EDGE SLOPES ARE 1:1 UNLESS OTHERWISE INDICATED

REVISIONS

K:\PAL_Roadway\01036715 U-3315\Roadway\Pro\U3315_rdy_1ty.dgn

5/12/2015