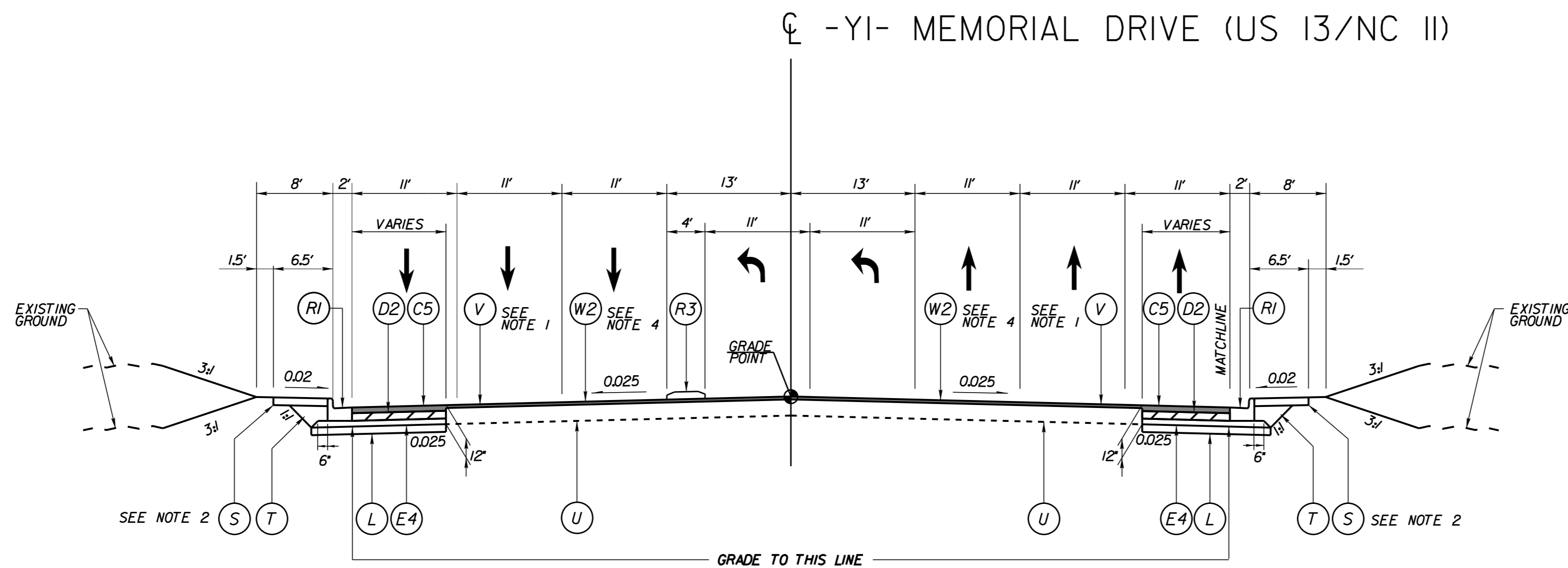


PROJECT REFERENCE NO. U-3315	SHEET NO. 2A-4
R/W SHEET NO.	
ROADWAY ENGINEER 6/11/2015	PAVEMENT DESIGN ENGINEER 6/11/2015
6/15/2015	6/15/2015

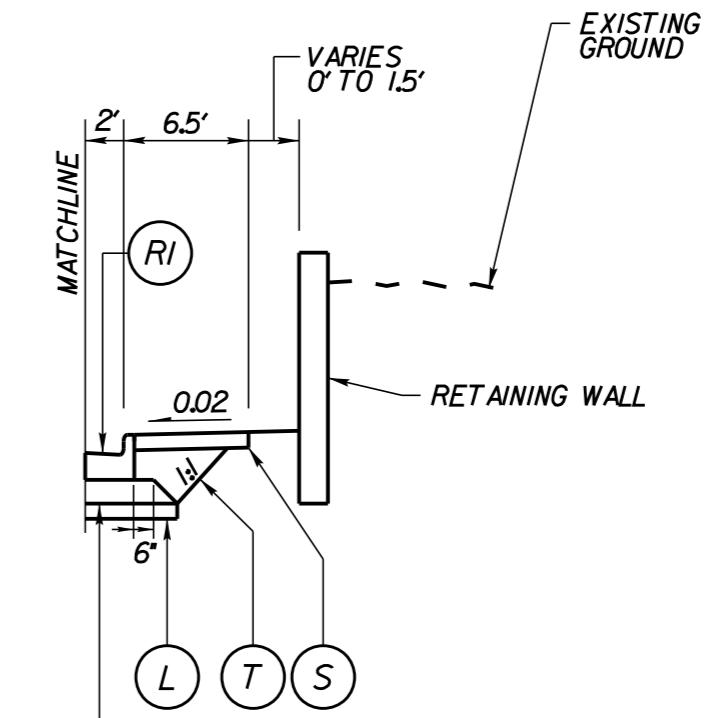
PAVEMENT SCHEDULE

C2	1.5" S9.5B
C3	1.5" S9.5C
C4	3" S9.5B
C5	3" S9.5C
C6	VAR. DEPTH S9.5B
C7	VAR. DEPTH S9.5C
D1	4" 119.0B
D2	4" 119.0C
D3	VAR. DEPTH 119.0B
D4	VAR. DEPTH 119.0C
E1	4" B25.0B
E2	4" B25.0C
E3	4.5" B25.0C
E4	5" B25.0C
E5	VAR. DEPTH B25.0B
E6	VAR. DEPTH B25.0C
L	CLASS IV AGGREGATE STABILIZATION
N	GEOTEXTILE FOR PAVEMENT STABILIZATION
R1	2'-6" CONCRETE CURB & GUTTER
R2	1'-6" CONCRETE CURB & GUTTER
R3	5' MONOLITHIC CONCRETE ISLAND (KEYED-IN)
S	4" CONCRETE SIDEWALK
T	EARTH MATERIAL
U	EXISTING PAVEMENT
V	MILLING EXISTING PAVEMENT (VARIABLE)
W	VARIABLE DEPTH ASPHALT PAVEMENT

REVISIONS

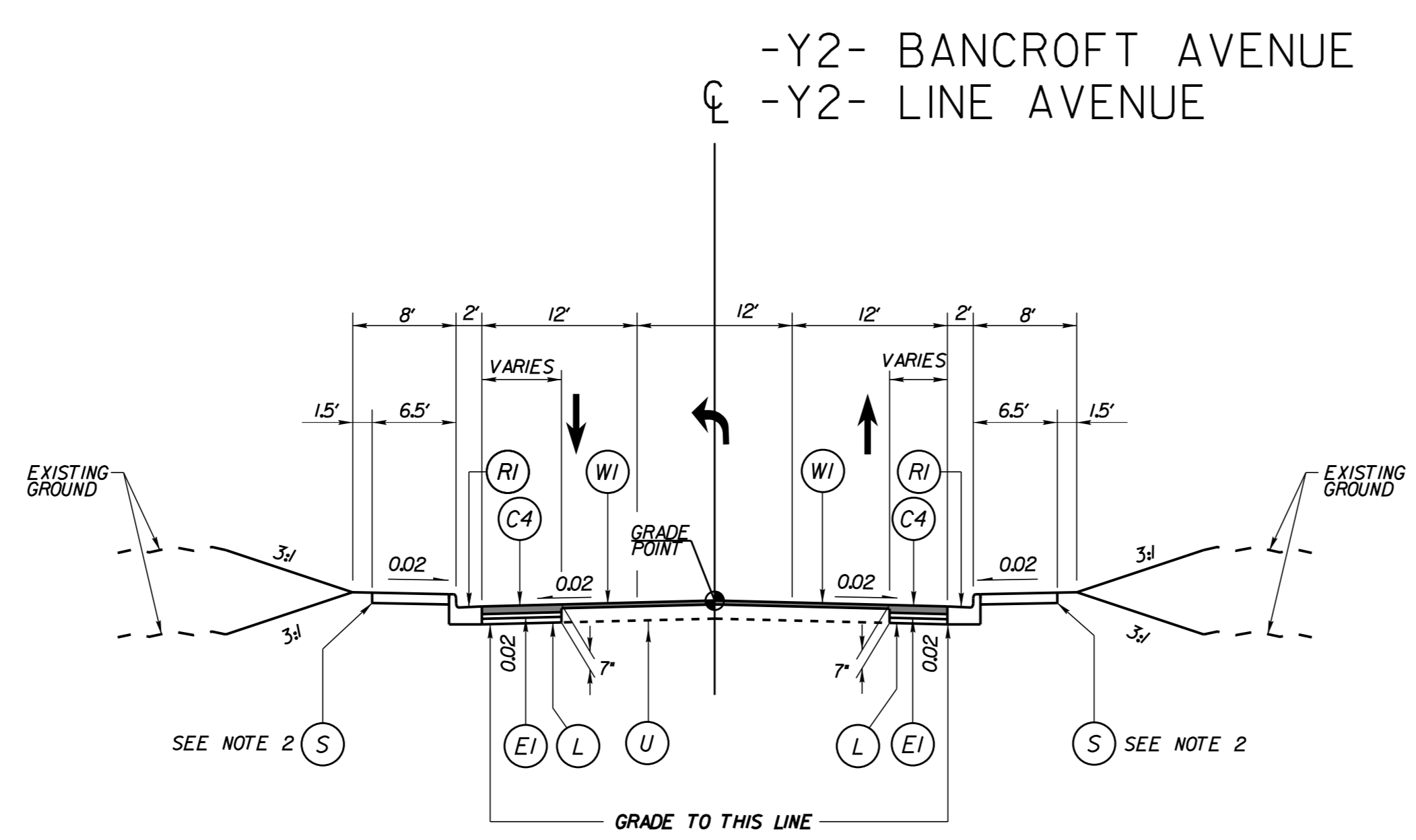


TYPICAL SECTION NO. 7
-Y1- STA 10+95.00 TO STA 26+26.00



TYPICAL SECTION NO. 7A

-Y1- STA 14+08.00 TO STA 15+02.00
-Y1- STA 15+83.00 TO STA 17+50.00



TYPICAL SECTION NO. 8
-Y2- STA 11+55.00 TO STA 14+53.87
-Y2- STA 15+45.55 TO STA 19+95.00

- NOTES:**
- MILL NOTCH TO KEY-IN S9.5C FROM -Y1- STA 10+95.00 TO 11+45.00 AND STA 25+76.00 TO 26+26.00
 - SIDEWALK LOCATIONS VARY (SEE PLANS)
 - PAVEMENT EDGE SLOPES ARE 1:1 UNLESS OTHERWISE INDICATED.
 - MILL ASPHALT PAVEMENT 3" TO 0" FROM -Y1- STA 11+45.00 TO 17+58.00 AND FROM 25+76.00 TO 26+26.00

K:\PAL_Roadway\01036175 U-3315\Roadway\Pro\U-3315_rdy_1ty.dgn

5/12/2015