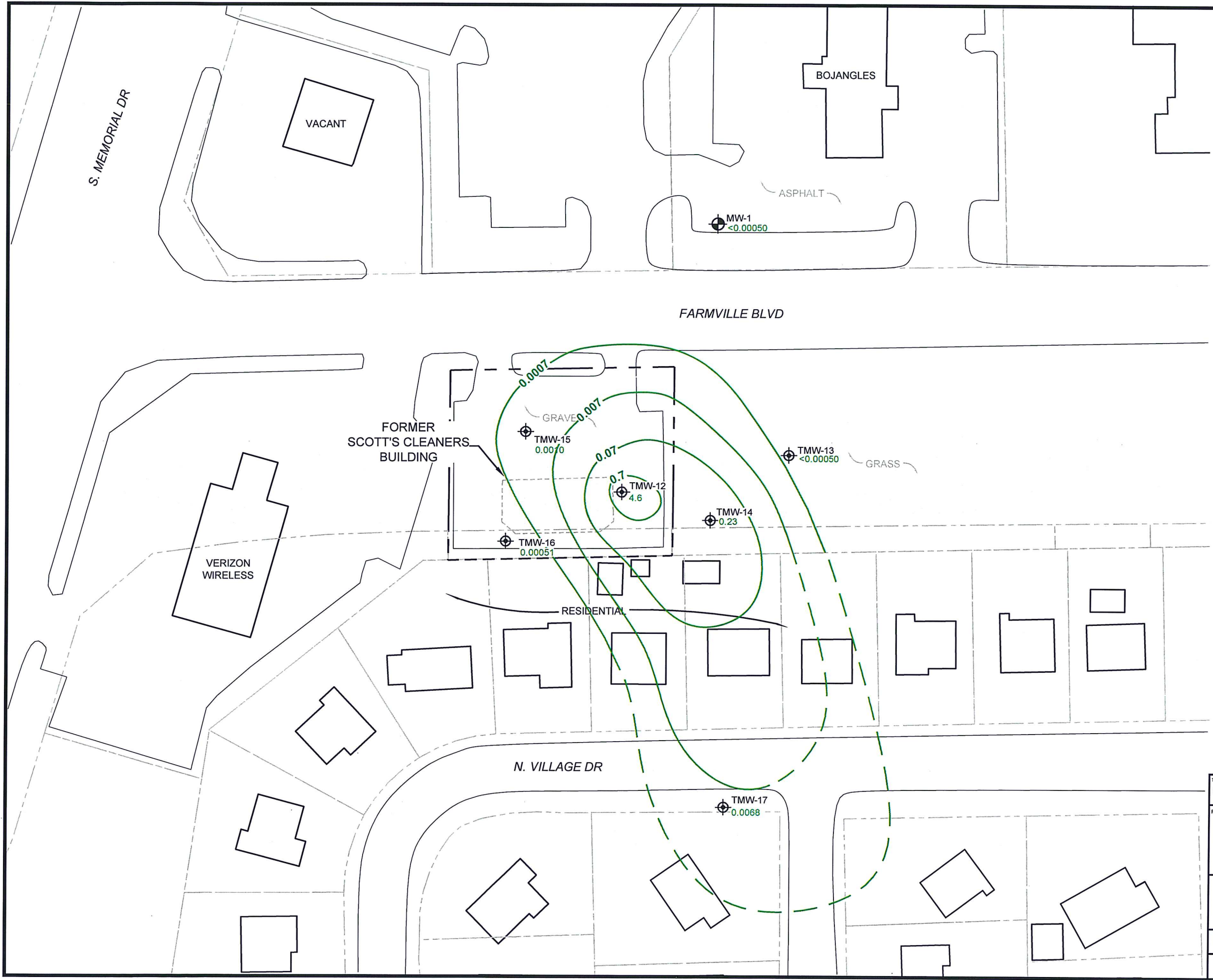


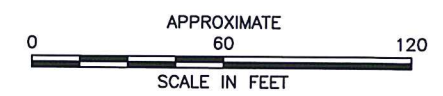
S:\AAA-Master Projects\DSCA - DS0\DS0-83 Scotts 74-0011\Reports\2014-11 GW Assessment\DC740011_20141202_Figures.dwg, 12/27/2014 2:54:06 PM, K 400color.pc3




- LEGEND**
- FORMER SOURCE PROPERTY BOUNDARY
 - - - - - PARCEL LINE
 - BUILDING
 - ⊕ TYPE II MONITORING WELL
 - ⊕ TEMPORARY MONITORING WELL
 - <math><0.00050</math> PCE CONCENTRATION (mg/L)
 - 0.007 — PCE ISOCONTOUR LINE IN mg/L

- NOTE:**
1. GROUNDWATER SAMPLES COLLECTED ON 11/11/14 - 11/13/14.
 2. 2013 TEMPORARY GROUNDWATER DATA NOT SHOWN BUT CONSIDERED IN CONTOURING.
 3. OTHER DRY-CLEANING RELATED CONSTITUENTS WERE DETECTED. SEE TABLE 8 FOR ALL GROUNDWATER DATA.

DRAFT



TITLE GROUNDWATER PCE ISOCONCENTRATION MAP	
PROJECT SCOTT'S CLEANERS DSCA ID: 74-0011 1699 FARMVILLE BOULEVARD GREENVILLE, PITT COUNTY	
 2923 South Tryon Street-Suite 100 Charlotte, North Carolina 28203 704-586-0007(p) 704-586-0373(f) License # C-1269 / #C-245 Geology	
DATE: 12-2-14	REVISION NO. 0
JOB NO. DS0-83	ATTACHMENT NO. 7