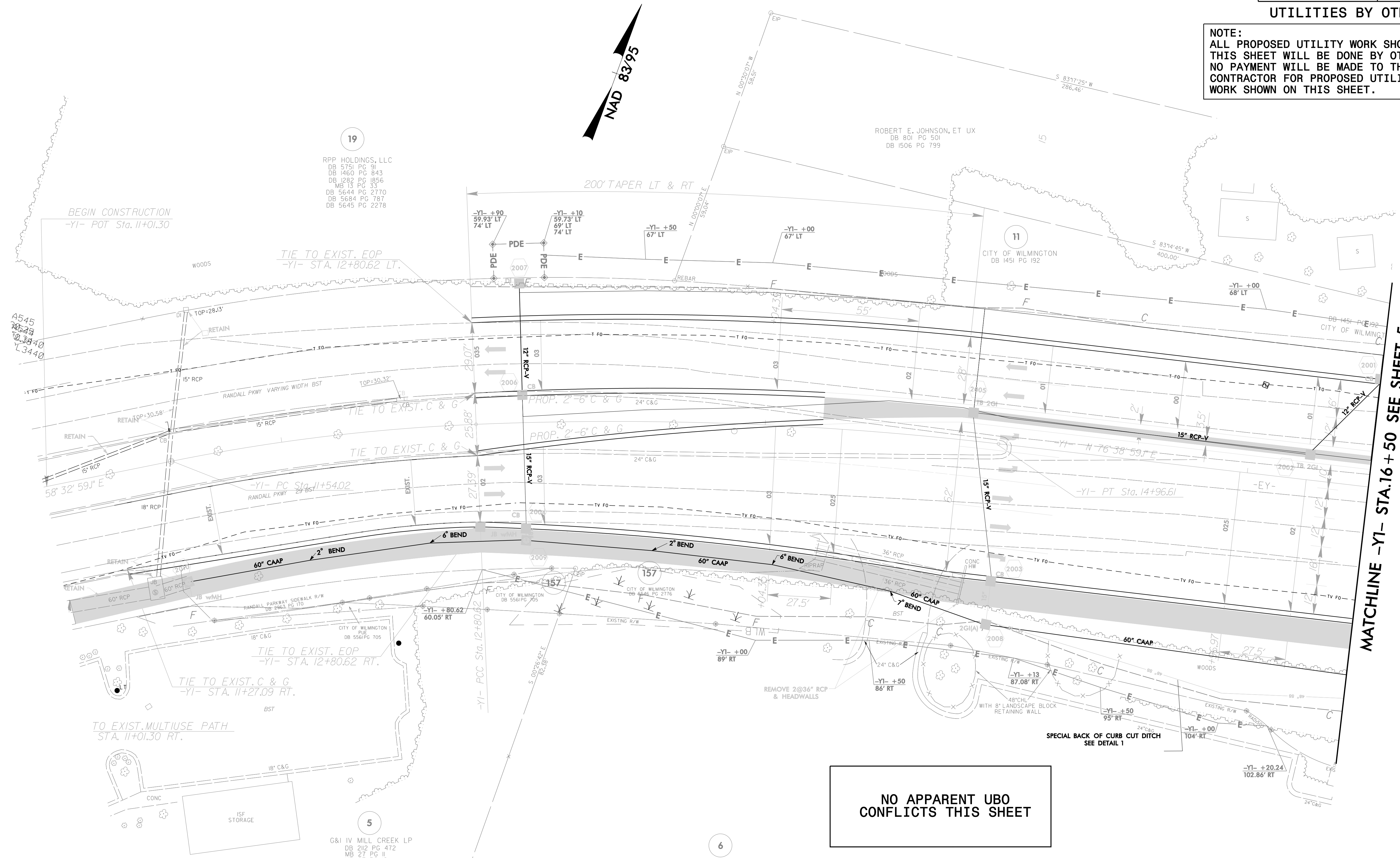
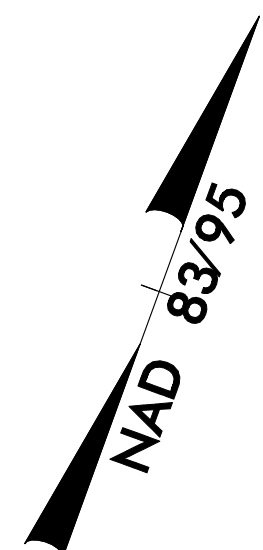


UTILITIES BY OTHERS

NOTE:
ALL PROPOSED UTILITY WORK SHOWN ON THIS SHEET WILL BE DONE BY OTHERS. NO PAYMENT WILL BE MADE TO THE CONTRACTOR FOR PROPOSED UTILITY WORK SHOWN ON THIS SHEET.



19
RPP HOLDINGS, LLC
DB 5751 PG 91
DB 1460 PG 843
DB 1282 PG 856
MB 13 PG 33
DB 5644 PG 2770
DB 5684 PG 787
DB 5645 PG 2278

ROBERT E. JOHNSON, ET UX
DB 801 PG 501
DB 1506 PG 799

11
CITY OF WILMINGTON
DB 1451 PG 192

157
CITY OF WILMINGTON
DB 646 PG 2776

5
G&I IV MILL CREEK LP
DB 212 PG 472
MB 27 PG 11
MB 27 PG 12
MB 41 PG 73
MB 13 PG 33
MB 5 PG 92
MB 6 PG 55
MB 10 PG 5
DB 5287 PG 2857
DB 5287 PG 2869

6
KERR CROSSING UOA
DB 4931 PG 2281
DB 4931 PG 2286
DB 5546 PG 2776
DB 5307 PG 717
DB 5535 PG 636

NO APPARENT UBO
CONFLICTS THIS SHEET

-YI-
PI Sta 12+17.45 PI Sta 13+88.84
Δ = 9° 04' 00.0" (RT) Δ = 9° 02' 00.0" (RT)
D = 7° 09' 43.1" D = 4° 10' 55.8"
L = 126.59' L = 216.00'
T = 63.43' T = 108.22'
R = 800.00' R = 1,370.00'
SE = 0.37 SE = 0.37

MATCHLINE -YI- STA.16+50 SEE SHEET 5

DATE: 1/24/2016
DRAWN: U3338B_UO_21.dwg

Prepared by:
AECOM
AECOM TECHNICAL SERVICES OF NORTH CAROLINA, INC.
701 CORPORATE CENTER DRIVE, SUITE 475, RALEIGH, NC 27607
919-854-6200 919-854-6259 (fax)