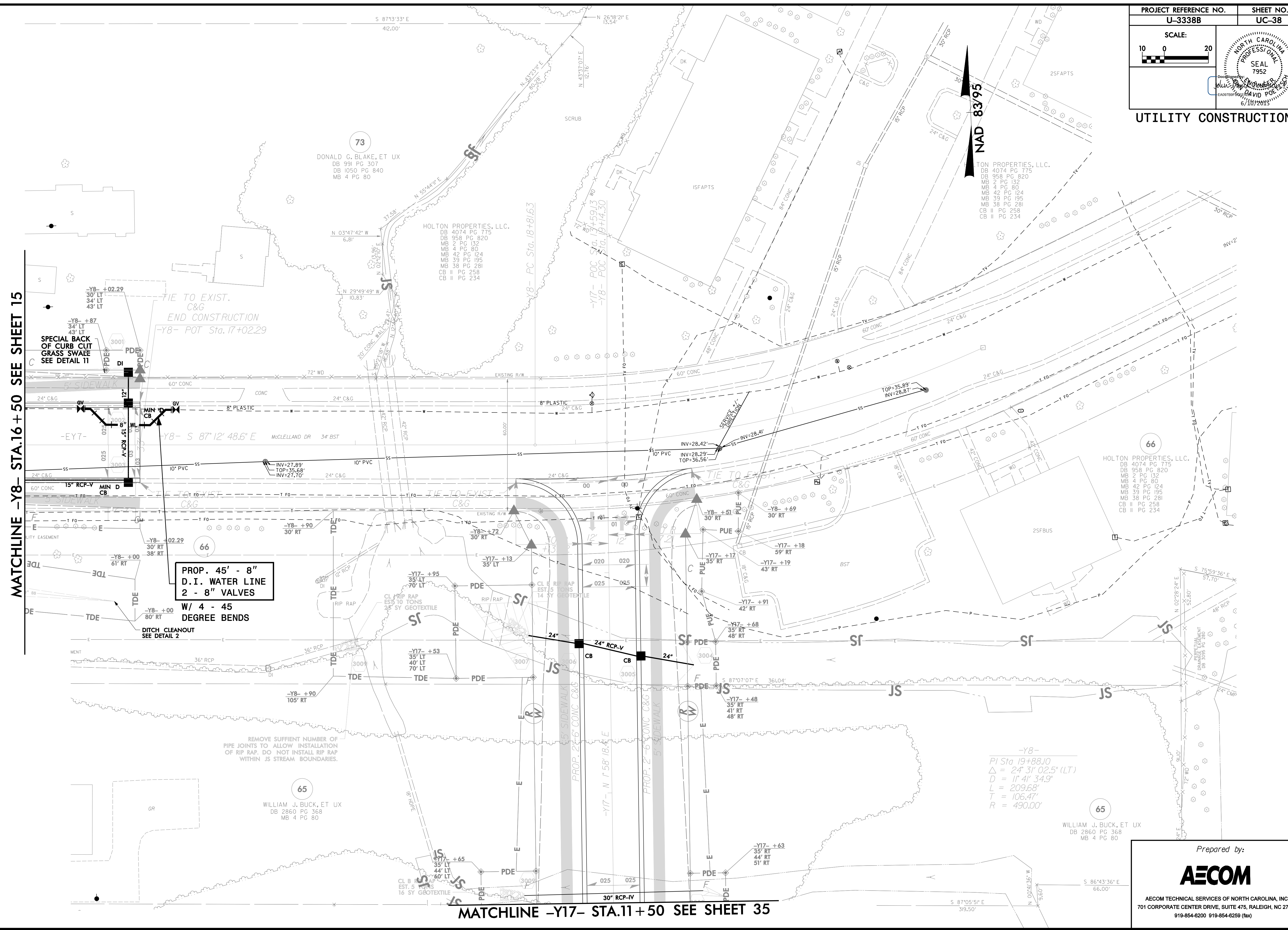


PROJECT REFERENCE NO. <b>U-3338B</b>	SHEET NO. <b>UC-38</b>
SCALE: 10 0 20	
<b>UTILITY CONSTRUCTION</b>	

MATCHLINE -Y8- STA.16 + 50 SEE SHEET 15

MATCHLINE -Y17- STA.11 + 50 SEE SHEET 35



**PROP. 45' - 8" D.I. WATER LINE**  
**2 - 8" VALVES**  
**W/ 4 - 45 DEGREE BENDS**

REMOVE SUFFICIENT NUMBER OF PIPE JOINTS TO ALLOW INSTALLATION OF RIP RAP. DO NOT INSTALL RIP RAP WITHIN JS STREAM BOUNDARIES.

-Y8-  
 PI Sta 19+88.10  
 $\Delta = 24' 3" 02.5" (LT)$   
 $D = 1' 4" 34.9"$   
 $L = 209.68'$   
 $T = 106.47'$   
 $R = 490.00'$

DATE: 6/10/2025  
DRAWN: 03338B\_U-38.dwg

Prepared by:  
  
 AECOM TECHNICAL SERVICES OF NORTH CAROLINA, INC.  
 701 CORPORATE CENTER DRIVE, SUITE 475, RALEIGH, NC 27607  
 919-854-6200 919-854-6259 (fax)