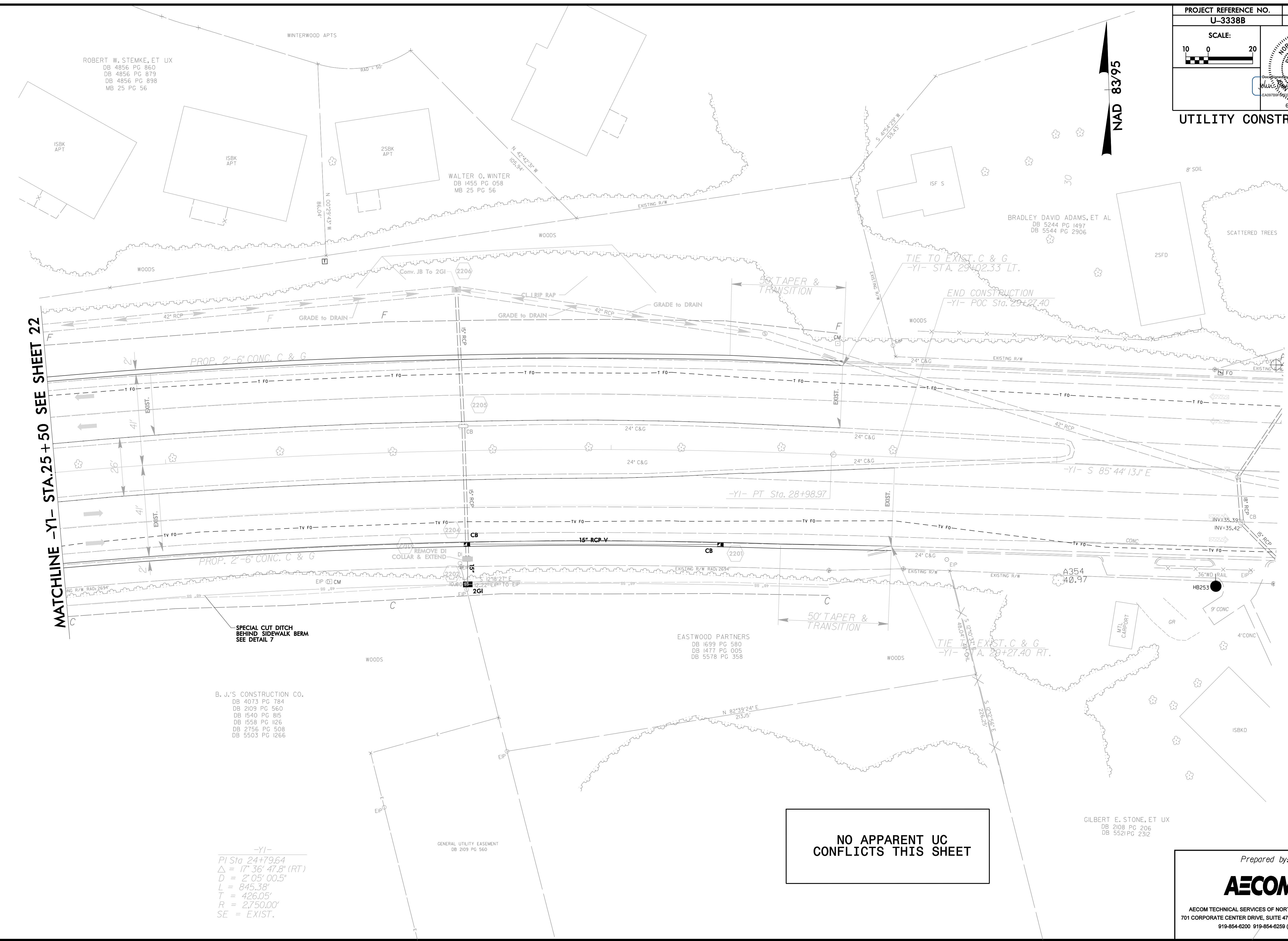


PROJECT REFERENCE NO. <b>U-3338B</b>	SHEET NO. <b>UC-22A</b>
SCALE: 10 0 20	
<b>UTILITY CONSTRUCTION</b>	



MATCHLINE -YI- STA. 25 + 50 SEE SHEET 22

NAD 83/95

ROBERT W. STEMKE, ET UX  
DB 4856 PG 860  
DB 4856 PG 879  
DB 4856 PG 898  
MB 25 PG 56

WALTER O. WINTER  
DB 1455 PG 058  
MB 25 PG 56

BRADLEY DAVID ADAMS, ET AL  
DB 5244 PG 1497  
DB 5544 PG 2906

EASTWOOD PARTNERS  
DB 1699 PG 580  
DB 1477 PG 005  
DB 5578 PG 358

B. J.'S CONSTRUCTION CO.  
DB 4073 PG 784  
DB 2109 PG 560  
DB 1540 PG 815  
DB 1558 PG 126  
DB 2756 PG 508  
DB 5503 PG 1266

GILBERT E. STONE, ET UX  
DB 2108 PG 206  
DB 5521 PG 2312

NO APPARENT UC  
CONFLICTS THIS SHEET

-YI-  
PI Sta 24+79.64  
 $\Delta = 17^{\circ} 36' 47.8" (RT)$   
 $D = 2^{\circ} 05' 00.5"$   
 $L = 845.38'$   
 $T = 426.05'$   
 $R = 2,750.00'$   
SE = EXIST.

Prepared by:

AECOM

AECOM TECHNICAL SERVICES OF NORTH CAROLINA, INC.  
701 CORPORATE CENTER DRIVE, SUITE 475, RALEIGH, NC 27607  
919-854-6200 919-854-6259 (fax)

DATE: 6/15/2015  
DRAWN: U3338B\_UC\_P22A.dgn