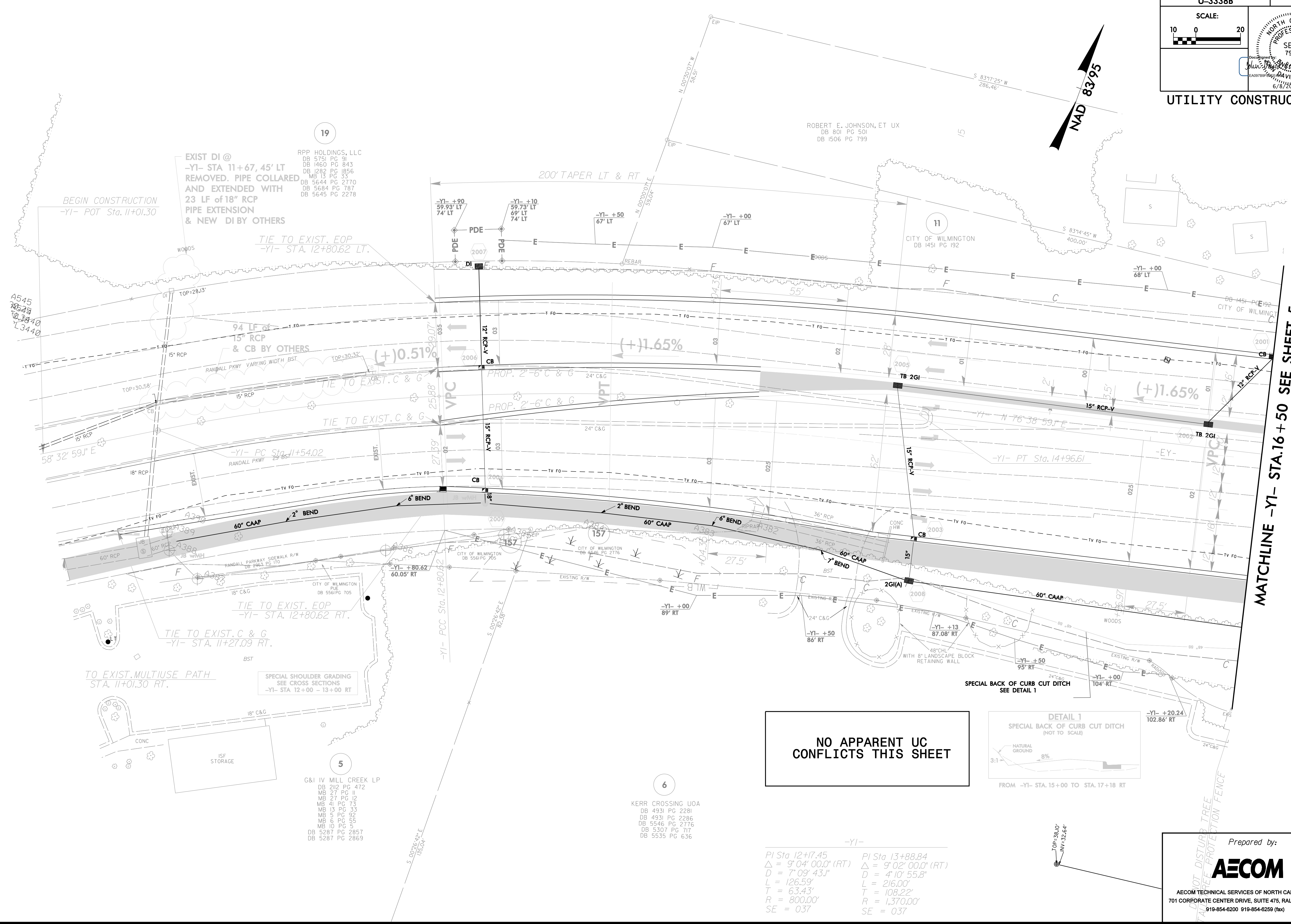


PROJECT REFERENCE NO. U-3338B	SHEET NO. UC-21
SCALE: 10 0 20	
UTILITY CONSTRUCTION	



19

5

6

MATCHLINE -YI- STA.16 +50 SEE SHEET 5

RPP HOLDINGS, LLC
DB 5751 PG 91
DB 1460 PG 843
DB 1282 PG 856
MB 13 PG 33
DB 5644 PG 2770
DB 5684 PG 787
DB 5645 PG 2278

G&I IV MILL CREEK LP
DB 212 PG 472
MB 27 PG II
MB 27 PG 12
MB 41 PG 73
MB 13 PG 33
MB 5 PG 92
MB 6 PG 55
MB 10 PG 5
DB 5287 PG 2857
DB 5287 PG 2869

KERR CROSSING UOA
DB 4931 PG 2281
DB 4931 PG 2286
DB 5546 PG 2776
DB 5307 PG 717
DB 5535 PG 636

-YI-
PI Sta 12+17.45 PI Sta 13+88.84
Δ = 9' 04' 00.0" (RT) Δ = 9' 02' 00.0" (RT)
D = 7' 09' 43.1" D = 4' 10' 55.8"
L = 126.59' L = 216.00'
T = 63.43' T = 108.22'
R = 800.00' R = 1,370.00'
SE = 0.37 SE = 0.37

Prepared by:
AECOM
AECOM TECHNICAL SERVICES OF NORTH CAROLINA, INC.
701 CORPORATE CENTER DRIVE, SUITE 475, RALEIGH, NC 27607
919-854-6200 919-854-6259 (fax)

DATE: 6/15/2015
DRAWN: 03338B_01.dwg