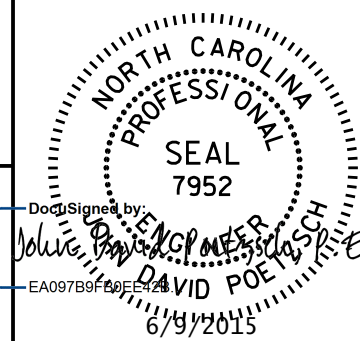
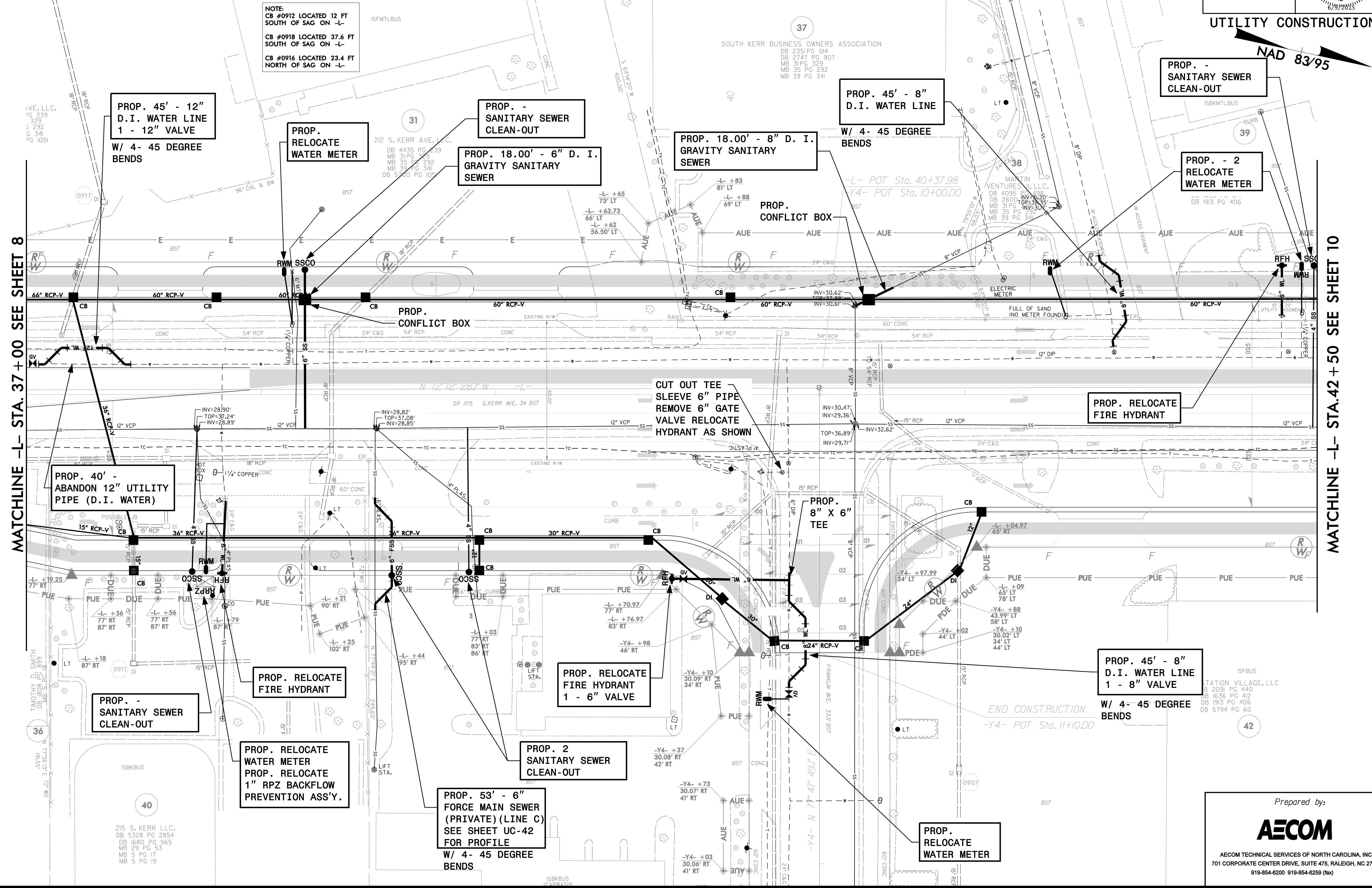


PROJECT REFERENCE NO. <b>U-3338B</b>	SHEET NO. <b>UC-9</b>
SCALE: 10 0 20	
<b>UTILITY CONSTRUCTION</b>	



MATCHLINE -L- STA. 37+00 SEE SHEET 8

MATCHLINE -L- STA. 42+50 SEE SHEET 10

NAD 83/95

PROP. - SANITARY SEWER CLEAN-OUT

PROP. 45' - 12" D.I. WATER LINE  
1 - 12" VALVE  
W/ 4- 45 DEGREE BENDS

PROP. RELOCATE WATER METER

PROP. - SANITARY SEWER CLEAN-OUT

PROP. 18.00' - 6" D. I. GRAVITY SANITARY SEWER

PROP. 18.00' - 8" D. I. GRAVITY SANITARY SEWER

PROP. 45' - 8" D.I. WATER LINE  
W/ 4- 45 DEGREE BENDS

PROP. - 2 RELOCATE WATER METER

PROP. CONFLICT BOX

PROP. CONFLICT BOX

PROP. RELOCATE FIRE HYDRANT

PROP. 40' - ABANDON 12" UTILITY PIPE (D.I. WATER)

CUT OUT TEE SLEEVE 6" PIPE REMOVE 6" GATE VALVE RELOCATE HYDRANT AS SHOWN

PROP. 8" X 6" TEE

PROP. - SANITARY SEWER CLEAN-OUT

PROP. RELOCATE FIRE HYDRANT

PROP. RELOCATE WATER METER  
PROP. RELOCATE 1" RPZ BACKFLOW PREVENTION ASS'Y.

PROP. RELOCATE FIRE HYDRANT 1 - 6" VALVE

PROP. 2 SANITARY SEWER CLEAN-OUT

PROP. 53' - 6" FORCE MAIN SEWER (PRIVATE) (LINE C) SEE SHEET UC-42 FOR PROFILE  
W/ 4- 45 DEGREE BENDS

PROP. 45' - 8" D.I. WATER LINE 1 - 8" VALVE  
W/ 4- 45 DEGREE BENDS

PROP. RELOCATE WATER METER

Prepared by:

**AECOM**

AECOM TECHNICAL SERVICES OF NORTH CAROLINA, INC.  
701 CORPORATE CENTER DRIVE, SUITE 475, RALEIGH, NC 27607  
919-854-6200 919-854-6259 (fax)

DATE: 6/21/2015  
DRAWN: 033380 uc\_psn\_009409