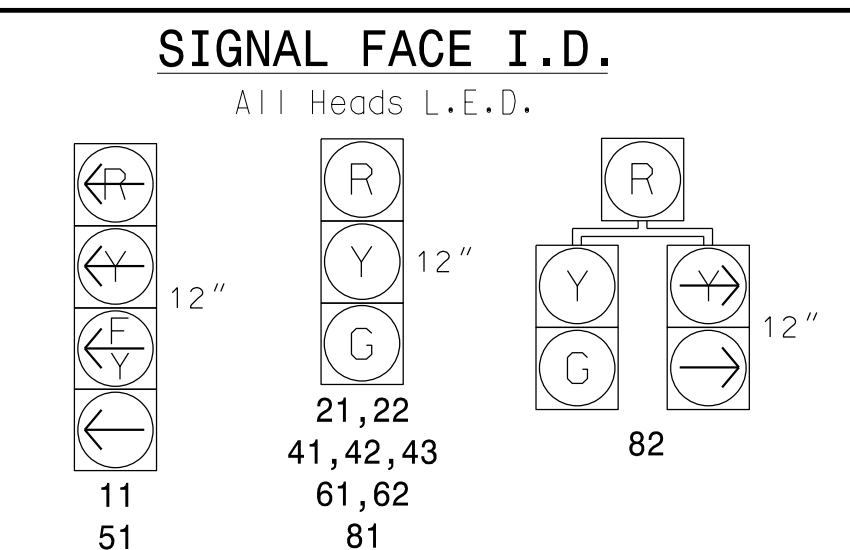


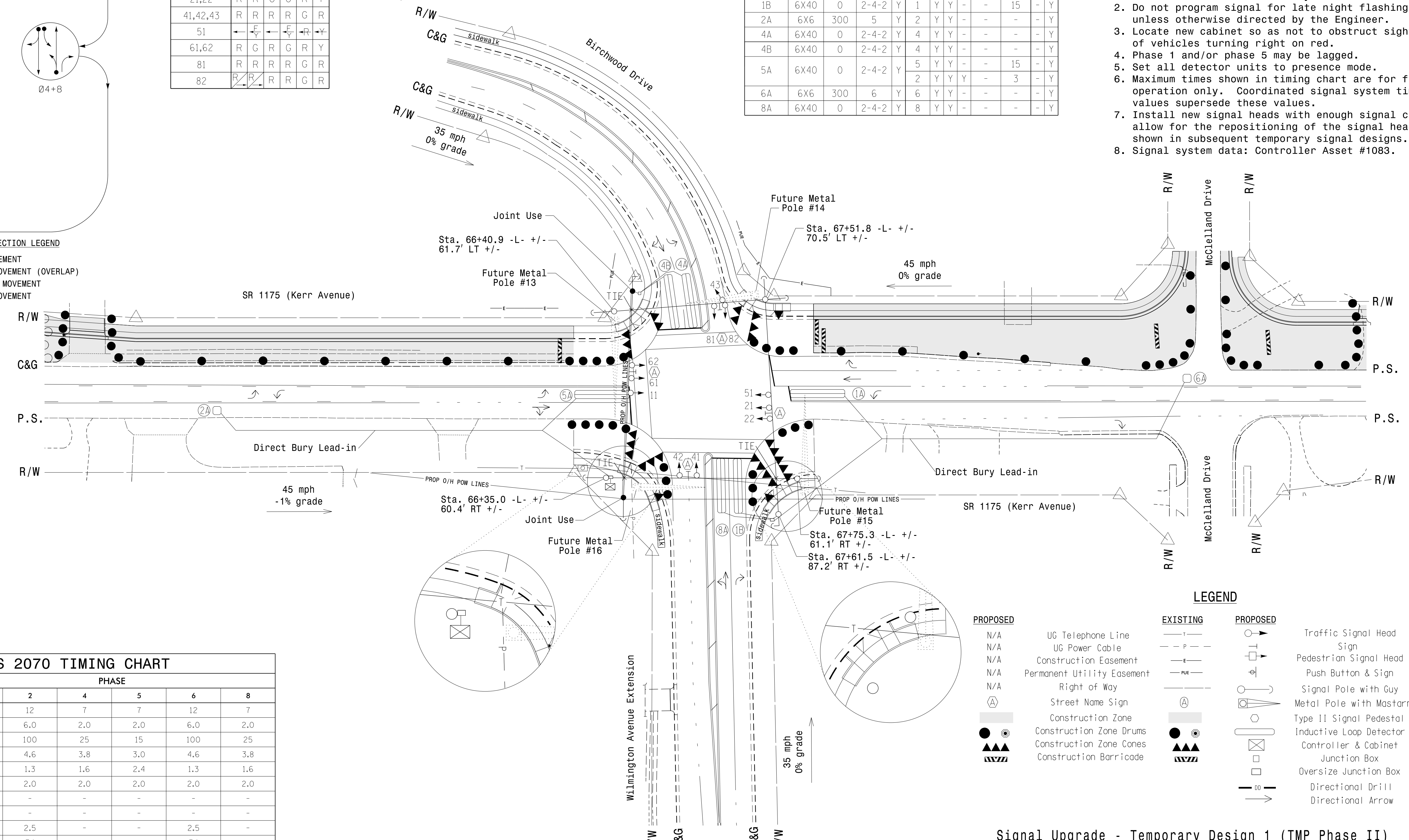
SIGNAL FACE	PHASE					FLASH
	01+5	01+6	02+5	02+6	04+8	
11	-	-	-	-	-	-
21,22	R	R	G	G	R	Y
41,42,43	R	R	R	R	G	R
51	-	-	-	-	-	-
61,62	R	G	R	G	R	Y
81	R	R	R	R	G	R
82	R	R	R	R	G	R



LOOP	SIZE (FT)	DISTANCE FROM STOPBAR (FT)	TURNS	NEW LOOP	DETECTOR PROGRAMMING						
					PHASE	CALLING	EXTENSION	STRETCH TIME	DELAY TIME	SYSTEM LOOP	NEW CARD
1A	6X40	0	2-4-2	Y	1	Y	Y	-	15	-	Y
1B	6X40	0	2-4-2	Y	6	Y	Y	-	3	-	Y
2A	6X6	300	5	Y	2	Y	Y	-	-	-	Y
4A	6X40	0	2-4-2	Y	4	Y	Y	-	-	-	Y
4B	6X40	0	2-4-2	Y	4	Y	Y	-	-	-	Y
5A	6X40	0	2-4-2	Y	5	Y	Y	-	15	-	Y
6A	6X6	300	6	Y	2	Y	Y	-	3	-	Y
8A	6X40	0	2-4-2	Y	8	Y	Y	-	-	-	Y

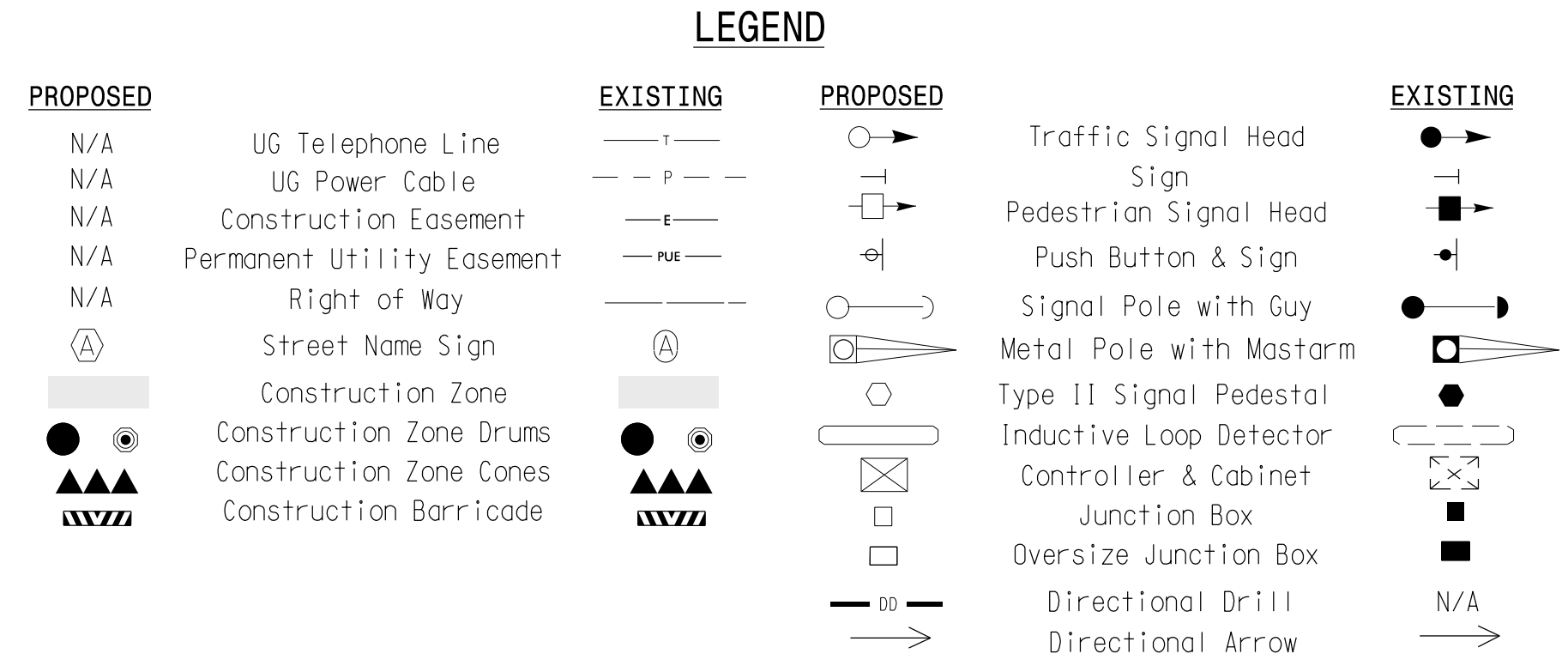
5 Phase Fully Actuated (Wilmington Signal System)

- NOTES**
1. Refer to "Roadway Standard Drawings NCDOT" dated January 2012 and "Standard Specifications for Roads and Structures" dated January 2012.
  2. Do not program signal for late night flashing operation unless otherwise directed by the Engineer.
  3. Locate new cabinet so as not to obstruct sight distance of vehicles turning right on red.
  4. Phase 1 and/or phase 5 may be lagged.
  5. Set all detector units to presence mode.
  6. Maximum times shown in timing chart are for free-run operation only. Coordinated signal system timing values supersede these values.
  7. Install new signal heads with enough signal cable to allow for the repositioning of the signal heads as shown in subsequent temporary signal designs.
  8. Signal system data: Controller Asset #1083.

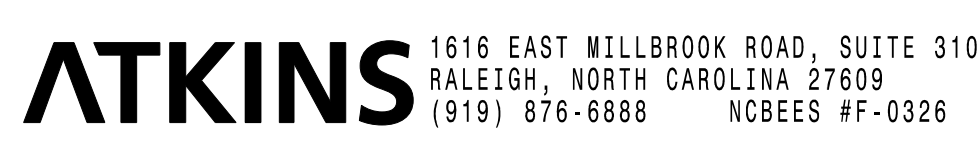


FEATURE	PHASE					
	1	2	4	5	6	8
Min Green 1 *	7	12	7	7	12	7
Extension 1 *	2.0	6.0	2.0	2.0	6.0	2.0
Max Green 1 *	30	100	25	15	100	25
Yellow Clearance	3.0	4.6	3.8	3.0	4.6	3.8
Red Clearance	2.4	1.3	1.6	2.4	1.3	1.6
Red Revert	2.0	2.0	2.0	2.0	2.0	2.0
Walk 1 *	-	-	-	-	-	-
Don't Walk 1	-	-	-	-	-	-
Seconds Per Actuation *	-	2.5	-	-	2.5	-
Max Variable Initial *	-	34	-	-	34	-
Time Before Reduction *	-	15	-	-	15	-
Time To Reduce *	-	30	-	-	30	-
Minimum Gap	-	3.2	-	-	3.2	-
Recall Mode	-	MIN RECALL	-	-	MIN RECALL	-
Vehicle Call Memory	-	YELLOW	-	-	YELLOW	-
Dual Entry	-	-	ON	-	-	ON
Simultaneous Gap	ON	ON	ON	ON	ON	ON

\* These values may be field adjusted. Do not adjust Min Green and Extension times for phases 2 and 6 lower than what is shown. Min Green for all other phases should not be lower than 4 seconds.



13-JUL-2015 10:19 01:41:Transportation\Projects\Kerr\100036295\_U3338B\_Kerr\_S19\_LITS\Signal\1403-10831.dgn



Signal Upgrade - Temporary Design 1 (TMP Phase II)

Prepared for the Offices of:  
  
**SR 1175 (Kerr Avenue) at Birchwood Drive / Wilmington Avenue Extension**  
 Division 03 New Hanover County Wilmington  
 PLAN DATE: June 2014 REVIEWED BY: LM Moon  
 PREPARED BY: JA Wiles REVIEWED BY: MB Toth  
 SCALE: 1"=40'

REVISIONS	INIT.	DATE

DATE: \_\_\_\_\_  
 S/G: INVENTORY NO. 03-108311