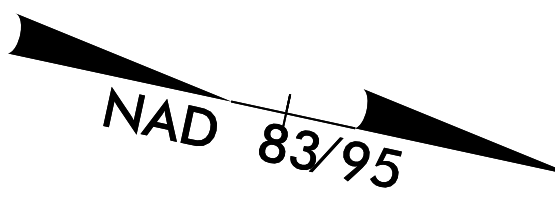


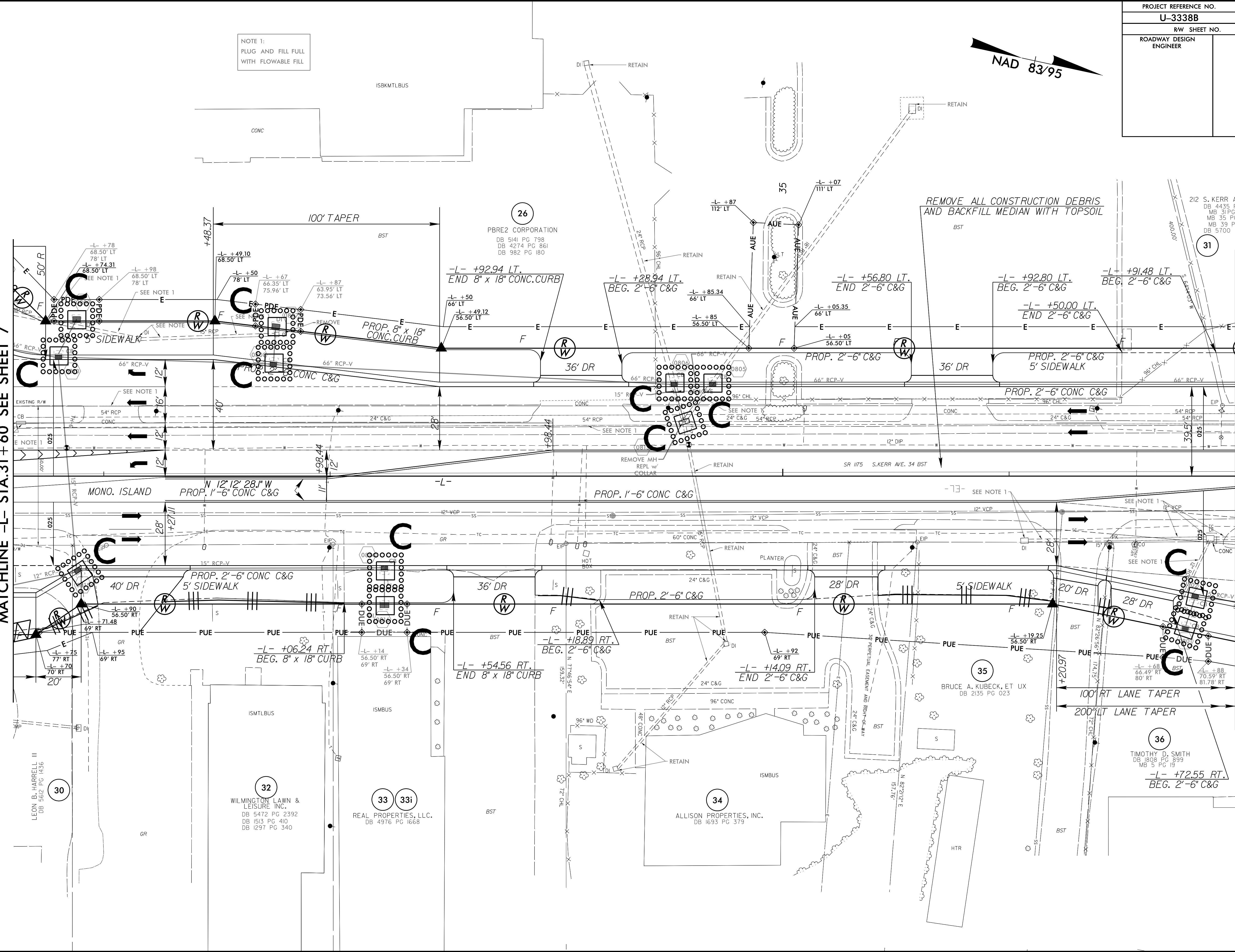
PROJECT REFERENCE NO.	SHEET NO.
U-3338B	EC-46/CONST. B
RW SHEET NO.	
ROADWAY DESIGN ENGINEER	HYDRAULICS ENGINEER



NOTE 1:
PLUG AND FILL FULL
WITH FLOWABLE FILL

MATCHLINE -L- STA.31+60 SEE SHEET 7

MATCHLINE -L- STA.37+00 SEE SHEET 9



REVISIONS

8/17/99

9/21/2015 14:30
D:\s\p\U-3338b-EC.upsh.s08.dgn
R:\s\p\U-3338b-EC.upsh.s08.dgn
A:\s\p\U-3338b-EC.upsh.s08.dgn

30
LEON B. HARRELL III
DB 5612 PG 1436

32
WILMINGTON LAWN &
LEISURE INC.
DB 5472 PG 2392
DB 1513 PG 410
DB 1297 PG 340

33 33i
REAL PROPERTIES, LLC.
DB 4976 PG 1668

34
ALLISON PROPERTIES, INC.
DB 1633 PG 379

35
BRUCE A. KUBECK, ET UX
DB 2135 PG 023

36
TIMOTHY D. SMITH
DB 1808 PG 399
MB 5 PG 19
-L- +72.55 RT.
BEG. 2'-6" C&G

26
PBRE2 CORPORATION
DB 5141 PG 798
DB 4274 PG 861
DB 982 PG 180

31
212 S. KERR AVE, LLC.
DB 4435 PG 239
MB 31 PG 329
MB 35 PG 292
MB 39 PG 341
DB 5700 PG 1051