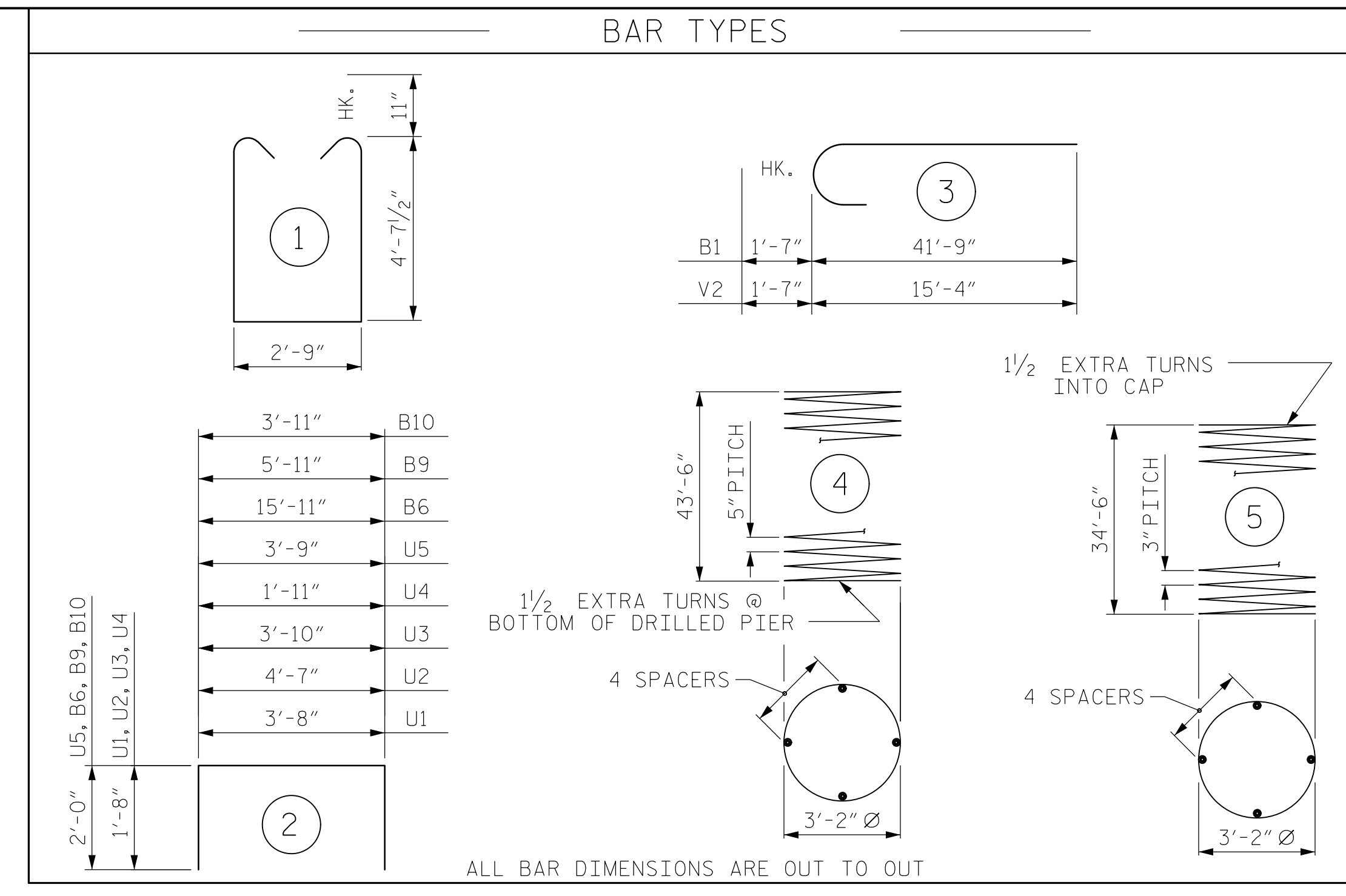
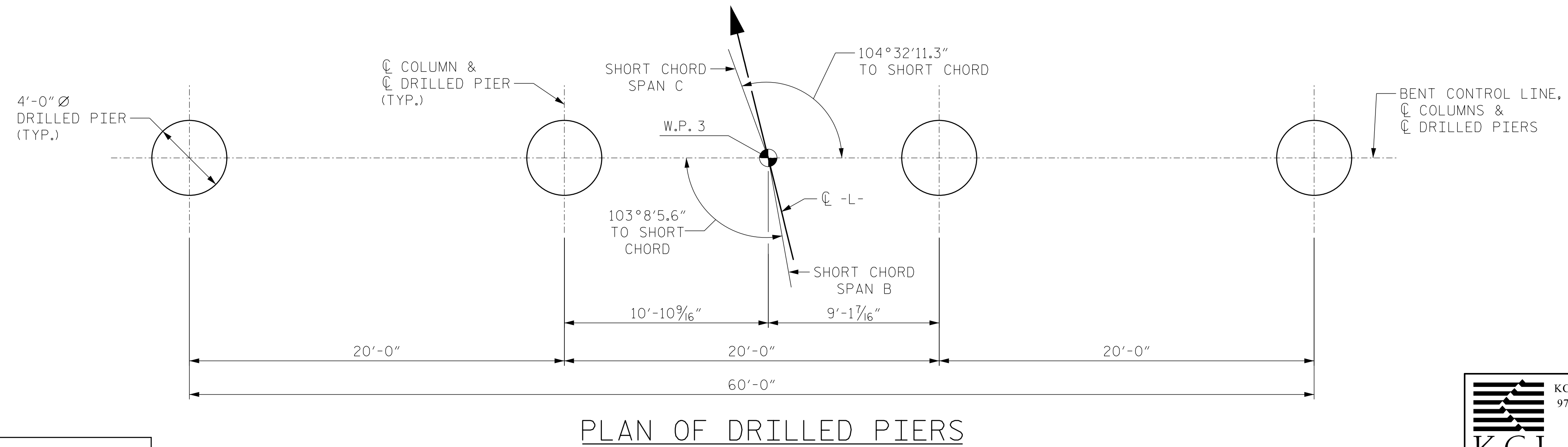
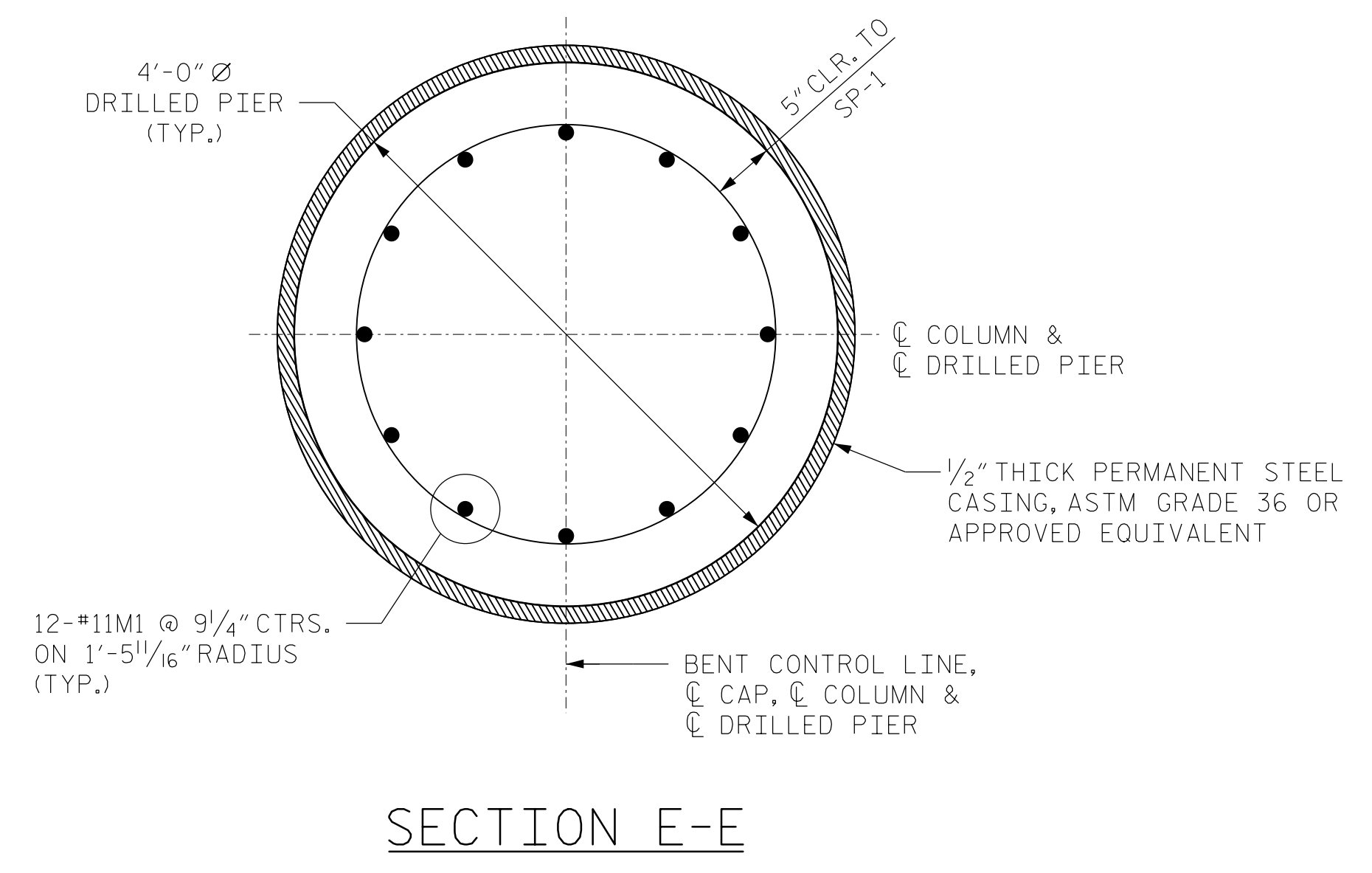
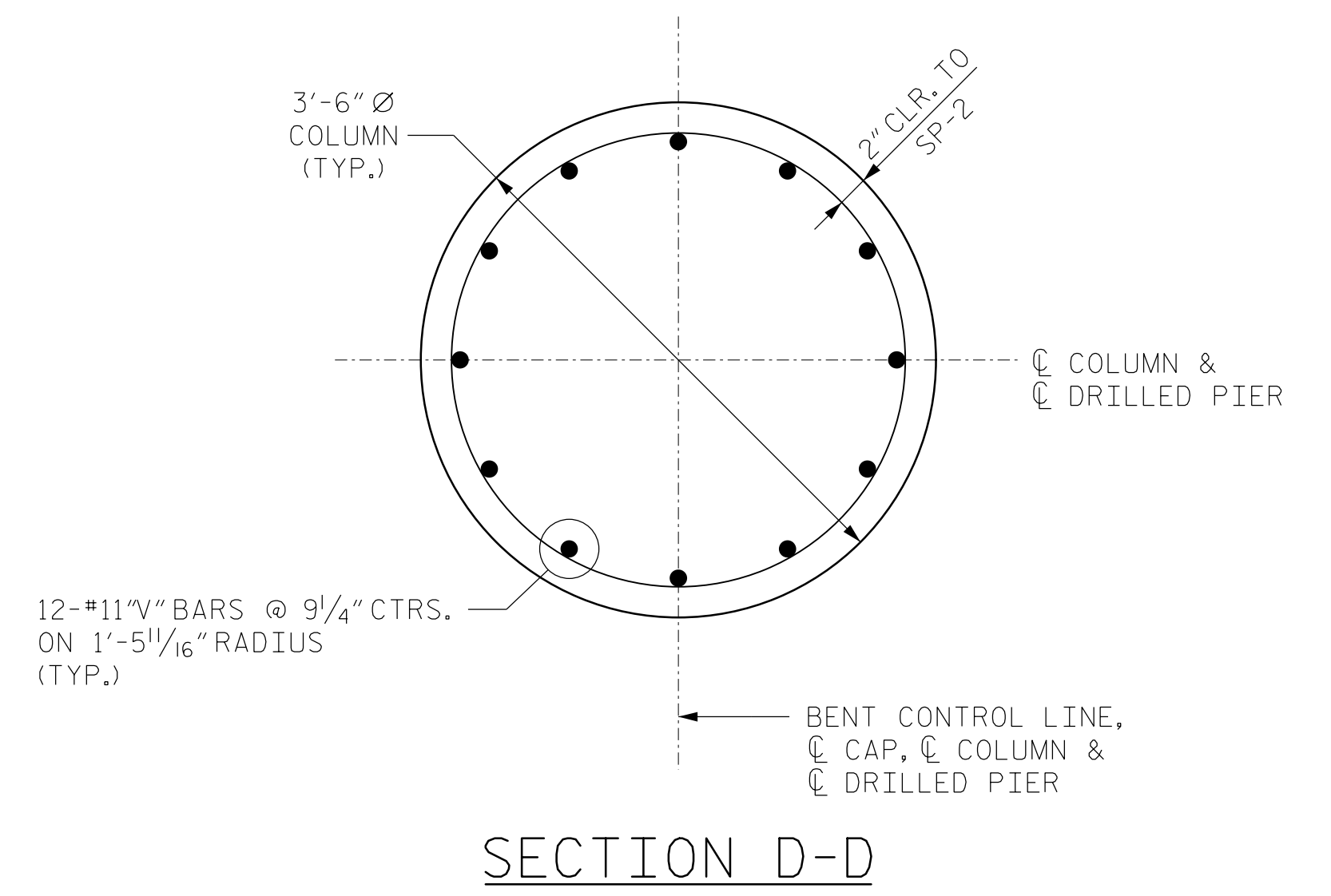


0400DEL_P30



BILL OF MATERIAL FOR ONE BENT					
BAR	NO.	SIZE	TYPE	LENGTH	WEIGHT
B1	16	#11	3	43'-4"	3,684
B2	16	#11	STR	39'-10"	3,386
B3	16	#5	STR	36'-6"	609
B4	8	#5	STR	32'-2"	268
B5	42	#5	STR	35'-7"	1,559
B6	63	#5	2	19'-11"	1,309
B7	6	#6	STR	16'-8"	150
B8	2	#6	STR	36'-0"	108
B9	42	#5	2	9'-11"	435
B10	42	#5	2	7'-11"	347
M1	48	#11	STR	53'-10"	13,729
S1	190	#6	1	13'-10"	3,948
U1	10	#4	2	7'-0"	47
U2	8	#4	2	7'-11"	42
U3	73	#4	2	7'-2"	349
U4	118	#5	2	5'-3"	646
U5	42	#5	2	7'-9"	339
V1	48	#11	STR	28'-4"	7,226
V2	48	#11	3	16'-11"	4,314
V3	156	#5	STR	20'-7"	3,349

REINFORCING STEEL (FOR ONE BENT)					45,844 LBS.
SP-1	4	*	4	1054'-6"	4,399
SP-2	4	**	5	1388'-3"	3,709
SPIRAL COLUMN REINFORCING STEEL (FOR ONE BENT)					8,108 LBS.
* THE SP-1 SPIRAL REINFORCING STEEL SHALL BE W31 OR D-31 COLD DRAWN WIRE OR #5 PLAIN OR DEFORMED BAR					
** THE SP-2 SPIRAL REINFORCING STEEL SHALL BE W20 OR D-20 COLD DRAWN WIRE OR #4 PLAIN OR DEFORMED BAR					
CLASS A CONCRETE BREAKDOWN (FOR ONE BENT)					
POUR #2 (COLUMNS & CRASHWALL)					170.8 C.Y.
POUR #3 (CAP)					57.4 C.Y.
TOTAL CLASS A CONCRETE					228.2 C.Y.
DRILLED PIERS: (FOR ONE BENT)					
DRILLED PIER CONCRETE POUR #1 (DRILLED PIERS)					81.9 C.Y.
4'-0" Ø DRILLED PIER NOT IN SOIL					102 LIN. FT.
4'-0" Ø DRILLED PIER IN SOIL					74 LIN. FT.
PERMANENT STEEL CASING FOR 4'-0" Ø DRILLED PIER					52 LIN. FT.
CSL TUBES					728 LIN. FT.

PROJECT NO. U-5008

MECKLENBURG COUNTY

STATION: 20+45.05 -L- P.O.T. = 14+54.24 -Y4- P.O.T.

SHEET 4 OF 4

STATE OF NORTH CAROLINA
DEPARTMENT OF TRANSPORTATION
RALEIGH

BENT 2 DETAILS

REVISIONS					
NO.	BY:	DATE:	NO.	BY:	DATE:
1			3		
2			4		

SHEET NO. S-60
SHEETS 78

KCI ASSOCIATES OF NC, P.A.
9741 SOUTHERN PINE BLVD SUITE J
CHARLOTTE, NC 28273
704-499-9452
NC LICENSE No. C-0764

NORTH CAROLINA PROFESSIONAL ENGINEER SEAL 032954
JARED C. MEDLIN
2/19/2015

2/18/2015 Y:\D:\wings\2011 DWGS\B11-11 Sugar Creek Rd - NCDOT\Structures\RFC\SHE60_U-5008_SD_LB2-04.dgn

DJD DRAWN BY: C.L.RUDISILL DATE: OCT. 2014
CHECKED BY: J.C.MEDLIN DATE: OCT. 2014