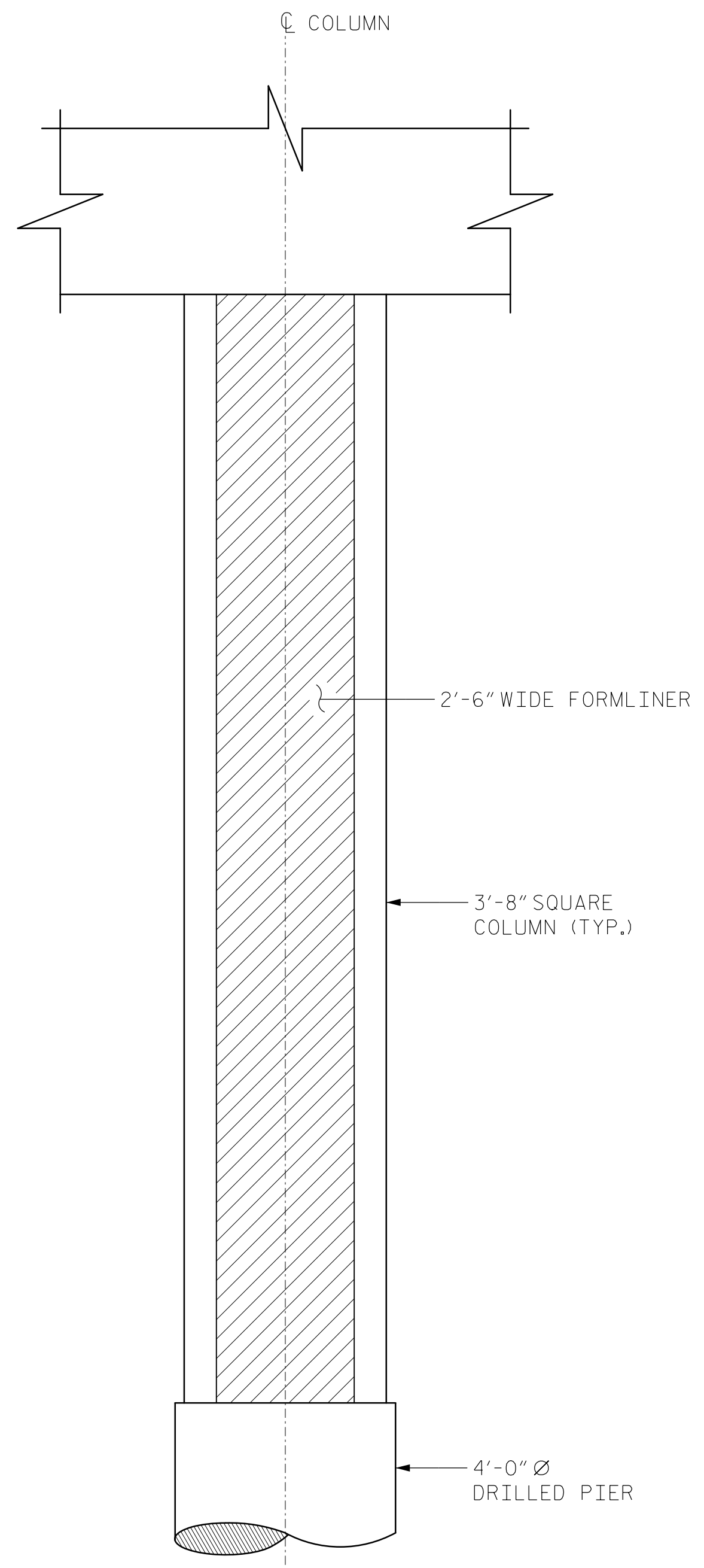


0400DEL_P30

2/18/2015 Y:\D:\ewings\2011 DWG\Structures\RFC\SH56_U-5008_SD_B1-03.dgn



ELEVATION

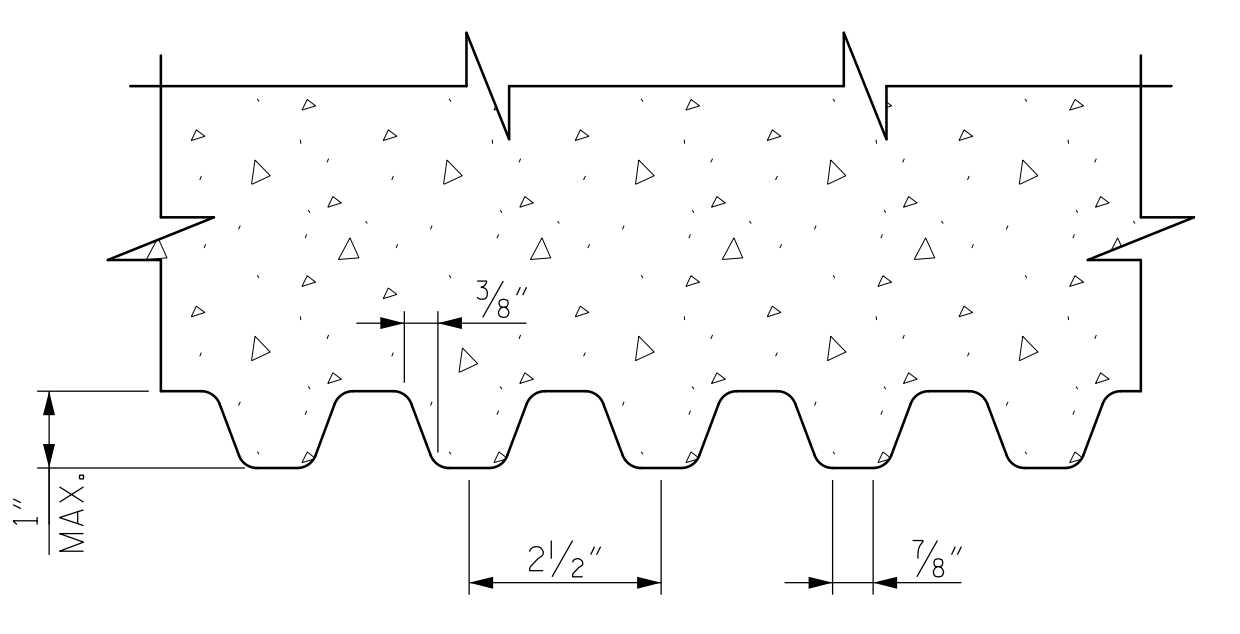
FORMLINER NOTES:

FOR ARCHITECTURAL CONCRETE SURFACE TREATMENT, SEE SPECIAL PROVISIONS.

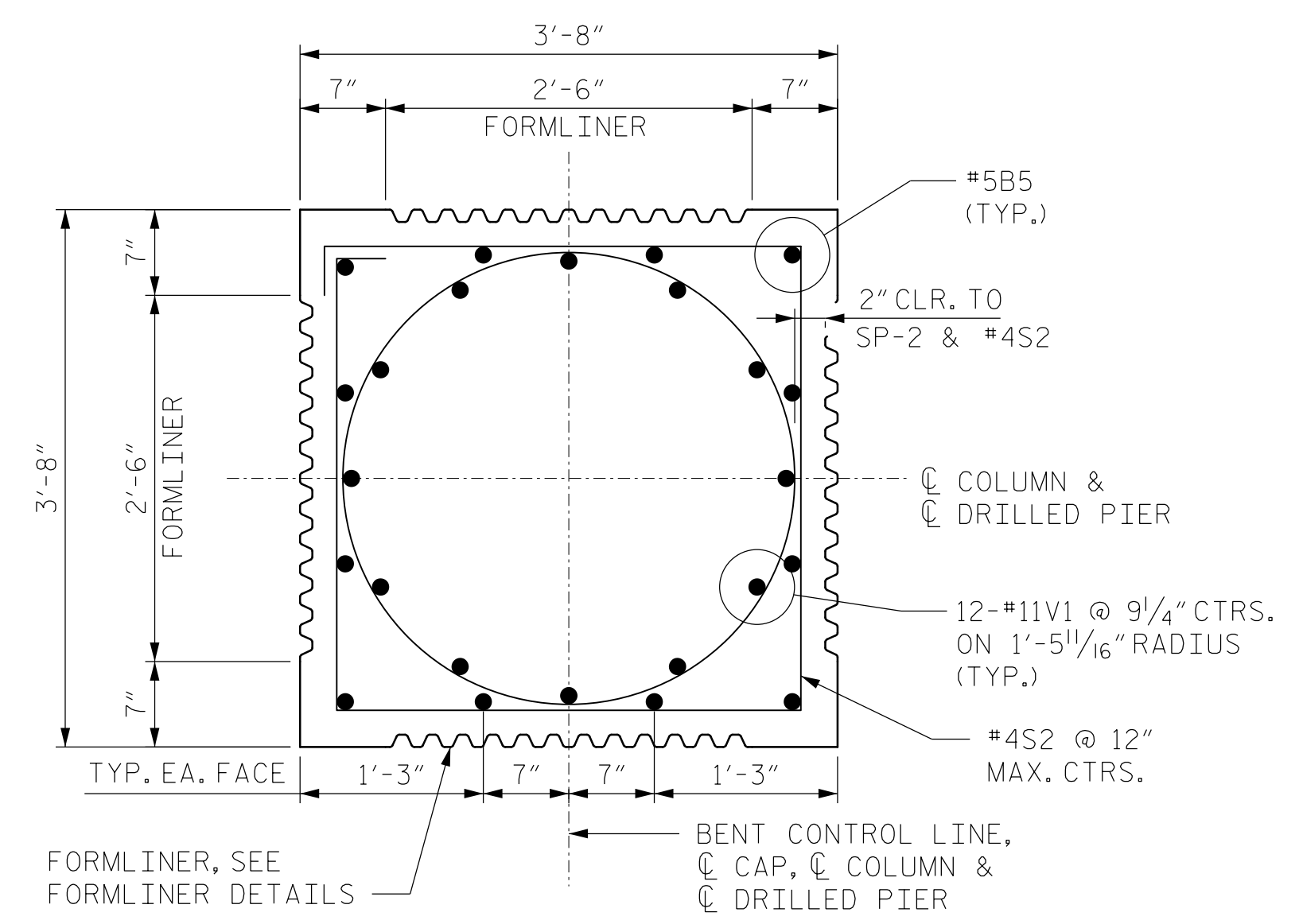
FORMLINER SHALL BE A 1" DEEP FRACTURED FIN CHEVRON PATTERN WITH FINS AT 2 1/2" ON CENTER, 7/8" FINS, 7/8" VALLEY, AND 3/8" DRAFT.

FORMLINER PATTERN SHALL BE SUBMITTED TO THE ENGINEER FOR APPROVAL PRIOR TO USE.

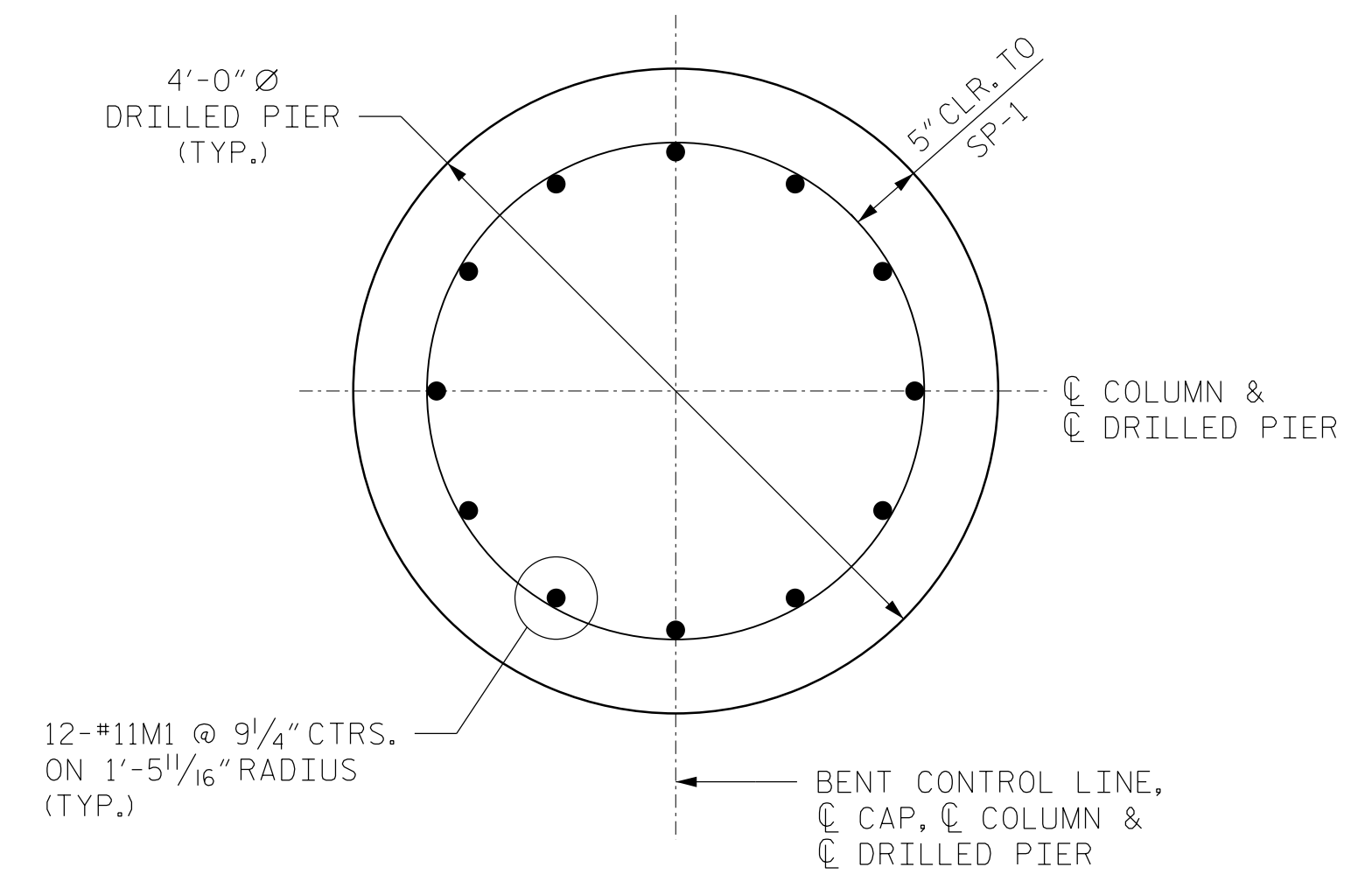
FORMWORK SHALL COMPLY WITH SECTION 420-3 OF THE STANDARD SPECIFICATIONS.



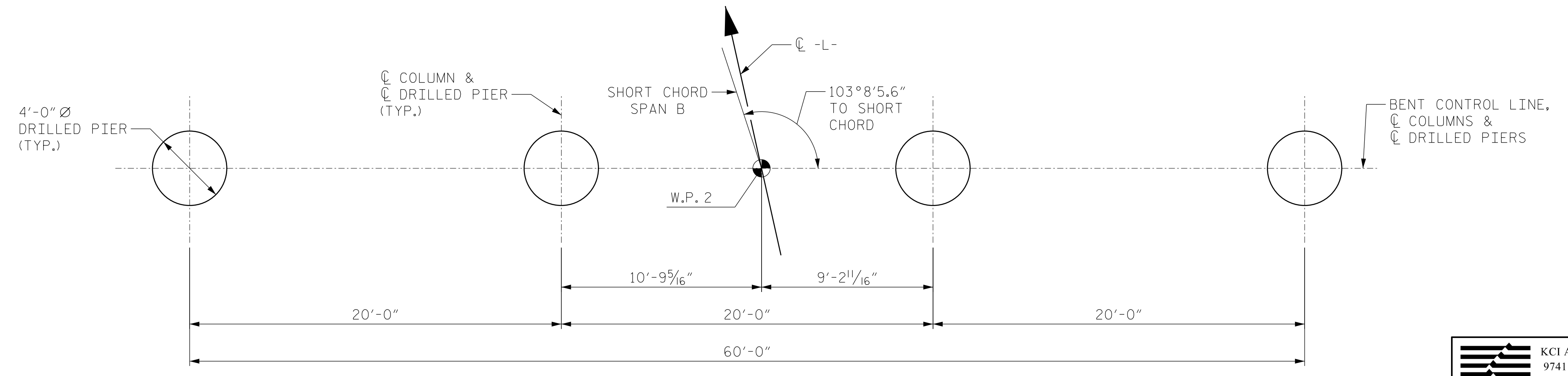
FORMLINER DETAIL



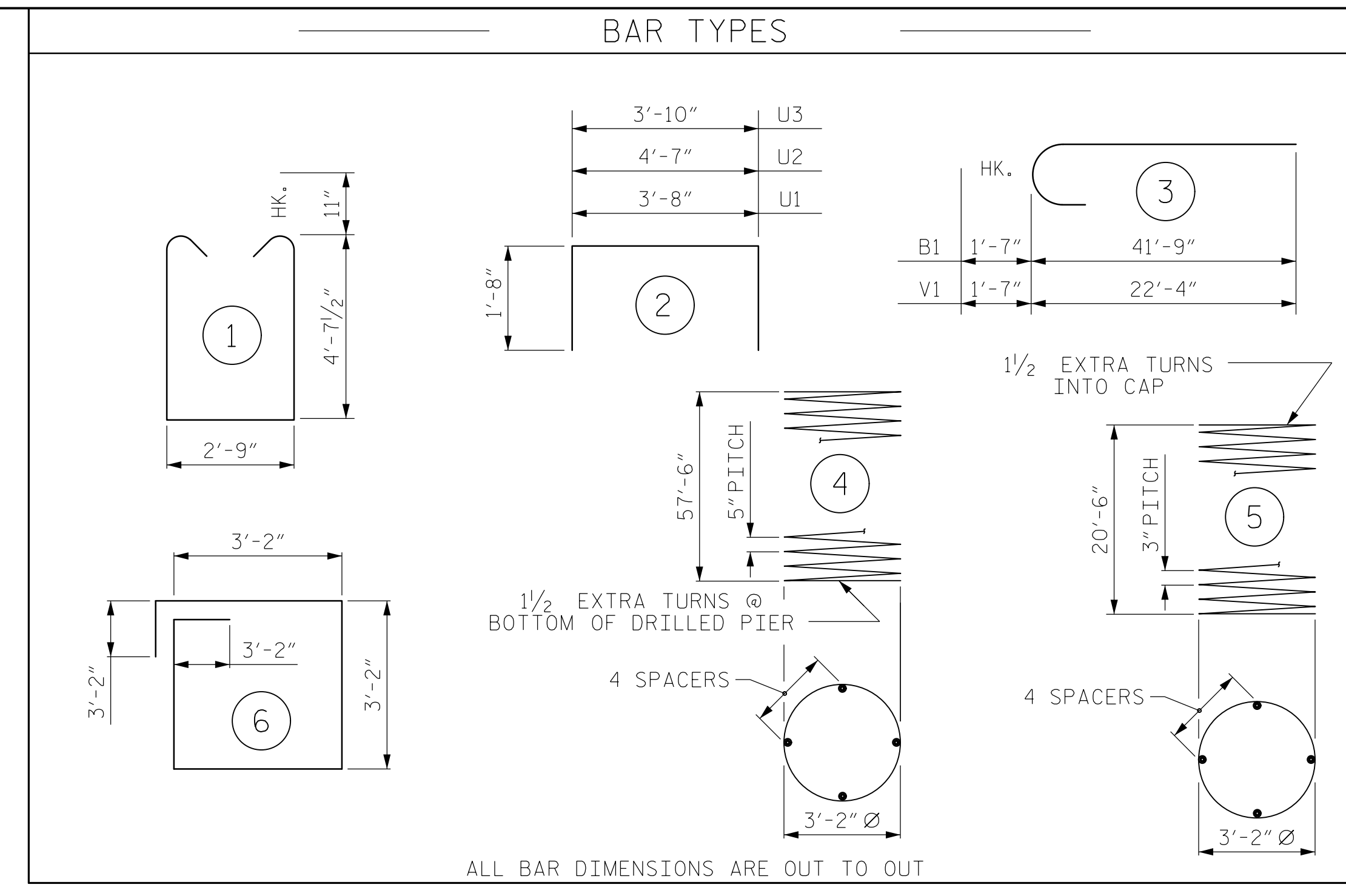
SECTION C-C



SECTION D-D



PLAN OF DRILLED PIERS



BILL OF MATERIAL FOR ONE BENT					
BAR	NO.	SIZE	TYPE	LENGTH	WEIGHT
B1	16	#11	3	43'-4"	3,684
B2	16	#11	STR	39'-10"	3,386
B3	16	#5	STR	36'-6"	609
B4	8	#5	STR	51'-0"	426
B5	48	#5	STR	19'-11"	997
M1	96	#11	STR	38'-0"	19,382
S1	190	#6	1	13'-10"	3,948
S2	84	#4	6	13'-4"	748
U1	10	#4	2	7'-0"	47
U2	8	#4	2	7'-11"	42
U3	79	#4	2	7'-2"	378
V1	48	#11	3	23'-11"	6,099
REINFORCING STEEL (FOR ONE BENT)					39,747 LBS.
SP-1	4	*	4	1,389'-0"	5,795
SP-2	4	**	5	828'-0"	2,212
SPIRAL COLUMN REINFORCING STEEL (FOR ONE BENT)					8,007 LBS.
* THE SP-1 SPIRAL REINFORCING STEEL SHALL BE W31 OR D-31 COLD DRAWN WIRE OR #5 PLAIN OR DEFORMED BAR					
** THE SP-2 SPIRAL REINFORCING STEEL SHALL BE W20 OR D-20 COLD DRAWN WIRE OR #4 PLAIN OR DEFORMED BAR					
CLASS A CONCRETE BREAKDOWN (FOR ONE BENT)					
POUR #2 (COLUMNS)					40.3 C.Y.
POUR #3 (CAP)					59.5 C.Y.
TOTAL CLASS A CONCRETE					99.8 C.Y.
DRILLED PIERS: (FOR ONE BENT)					
DRILLED PIER CONCRETE					
POUR #1 (DRILLED PIERS)					108.0 C.Y.
4'-0" Ø DRILLED PIER NOT IN SOIL					74 LIN. FT.
4'-0" Ø DRILLED PIER IN SOIL					158 LIN. FT.
CSL TUBES					952 LIN. FT.

PROJECT NO. U-5008

MECKLENBURG COUNTY

STATION: 20+45.05 -L- P.O.T. = 14+54.24 -Y4- P.O.T.

SHEET 3 OF 3

STATE OF NORTH CAROLINA
DEPARTMENT OF TRANSPORTATION
RALEIGH

BENT 1 DETAILS

REVISIONS					
NO.	BY:	DATE:	NO.	BY:	DATE:
1			3		
2			4		

SHEET NO. S-56
SHEETS 78

KCI ASSOCIATES OF NC, P.A.
9741 SOUTHERN PINE BLVD SUITE J
CHARLOTTE, NC 28273
704-499-9452
NC LICENSE No. C-0764

NORTH CAROLINA PROFESSIONAL ENGINEER SEAL 032954
JARED C. MEDLIN
2/19/2015

DJD
DRAWN BY: D.L.KEENER DATE: OCT. 2014
CHECKED BY: J.C.MEDLIN DATE: OCT. 2014