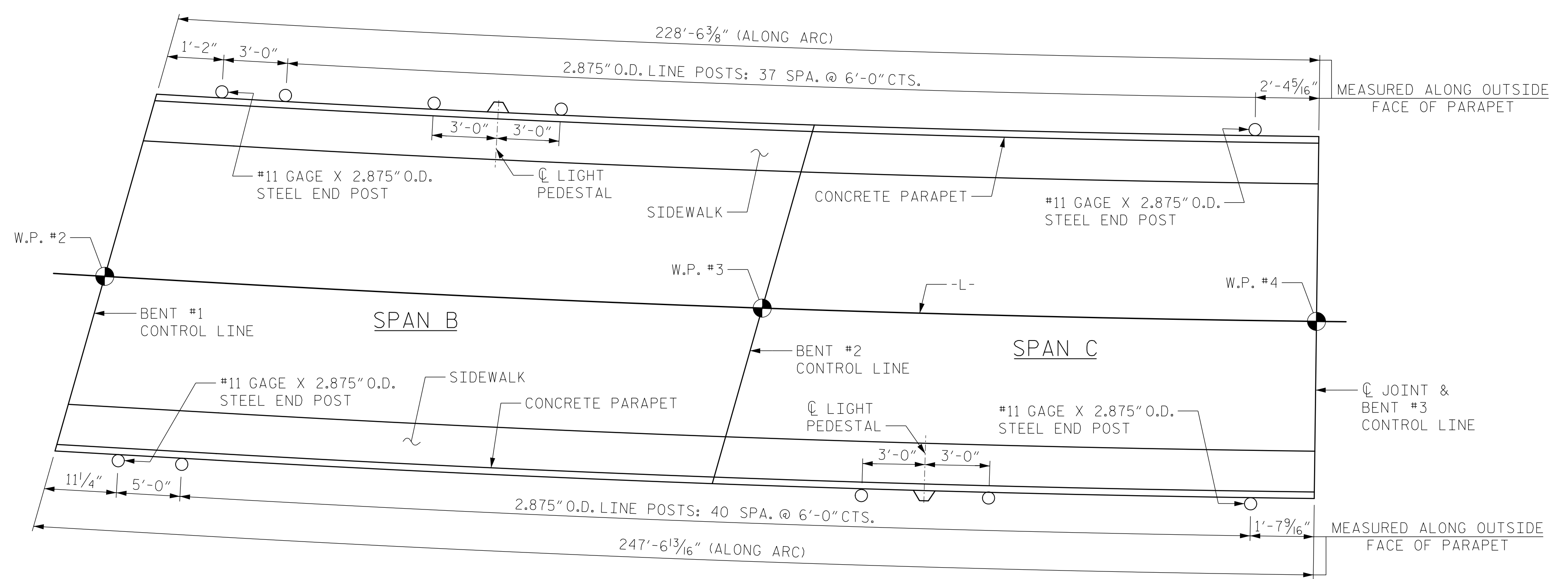


0400DEL_P30



PLAN OF FENCE POST SPACING

NOTES

FOR 72" CHAIN LINK FENCE, SEE SPECIAL PROVISIONS.

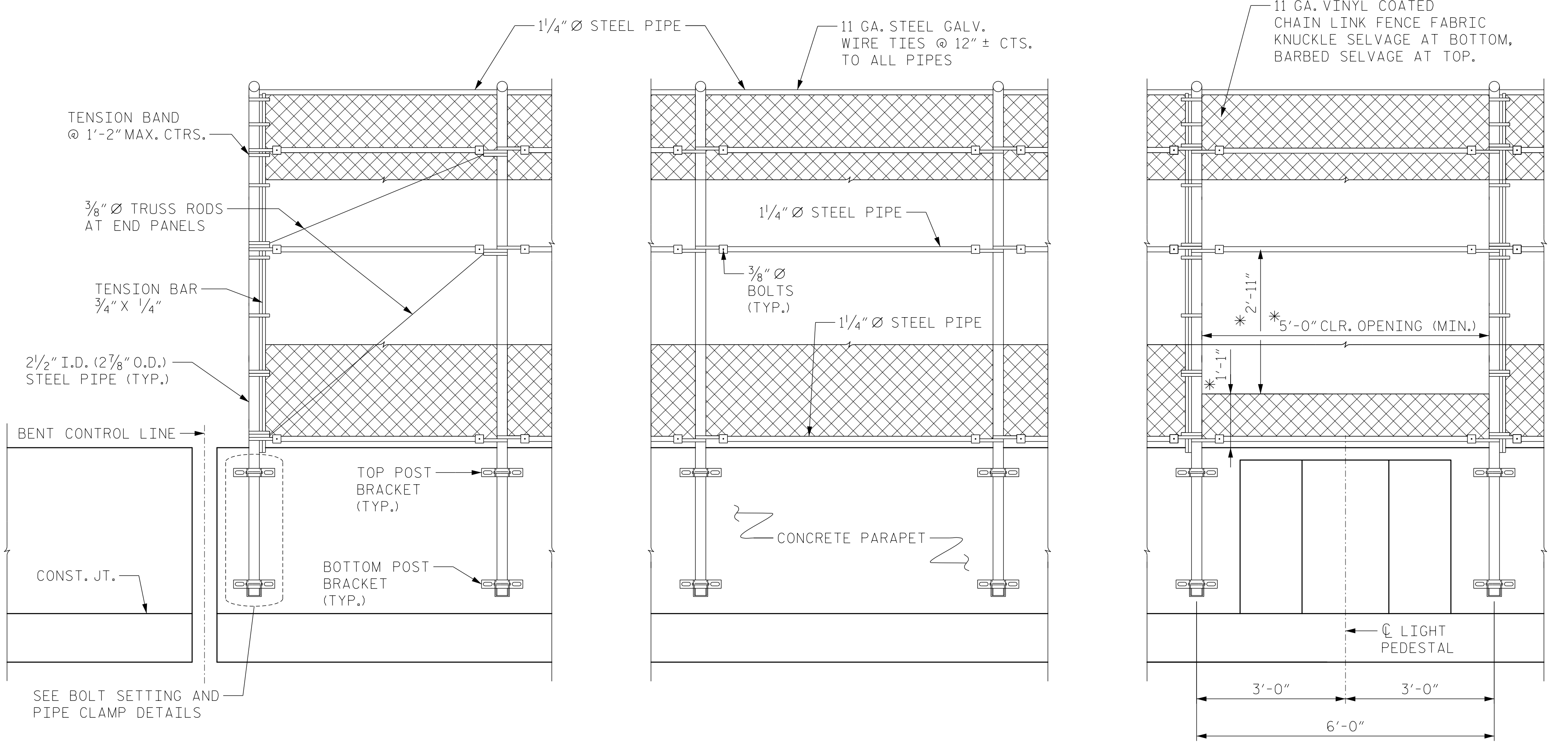
MATERIAL FOR ANCHOR BOLTS SHALL BE TYPE 304 STAINLESS STEEL WITH A MINIMUM 9,000 PSI ULTIMATE STRENGTH, NUTS AND WASHERS SHALL BE TYPE 304 STAINLESS STEEL. ANCHOR BOLTS SHALL BE EMBEDDED AS PER ADHESIVE BONDING SYSTEM MANUFACTURER SPECIFICATIONS. NUTS SHALL BE AMERICAN STANDARD FINISHED HEXAGON THICK NUTS, CLASS 2B THREADS.

LEVEL ONE FIELD TESTING IS REQUIRED, AND THE YIELD LOAD OF THE ANCHOR BOLTS IS 10 KIPS. FOR ADHESIVELY ANCHORED ANCHOR BOLTS OR DOWELS, SEE STANDARD SPECIFICATIONS.

ALL FENCE MATERIAL SHALL MEET THE REQUIREMENTS OF SECTION 1050 OF THE STANDARD SPECIFICATIONS, GALVANIZE ALL STEEL PARTS AND HARDWARE IN ACCORDANCE WITH ARTICLE 1076 OF THE STANDARD SPECIFICATIONS.

FENCE POST LOCATIONS SHALL BE SHIFTED, AS NECESSARY, TO MAINTAIN 1'-0" MINIMUM DISTANCE FROM ANCHOR BOLT TO JOINTS IN PARAPET.

WELDING SHALL BE DONE IN ACCORDANCE WITH ARTICLE 1072-20 OF STANDARD SPECIFICATIONS.



END POST ELEVATION (TYP. AT BENT 1 AND BENT 3)

MIDDLE ELEVATION

ELEVATION AT LIGHT PEDESTAL

PARTIAL ELEVATIONS

* CONTRACTOR SHALL INSTALL A GATE WITH A MINIMUM OPENING OF 5'-0" X 2'-11" AT EACH LIGHT PEDESTAL LOCATION. THE TOP RAIL OF THE 2-BAR METAL RAIL WILL BE REMOVED DURING MAINTENANCE, THEREFORE THE GATE MUST BE INSTALLED IN SUCH A MANNER AS TO BE ABLE TO AVOID INTERFERENCE WITH THE BOTTOM RAIL OF THE 2-BAR METAL RAIL AND THE 2-BAR METAL RAIL POSTS ON EITHER SIDE OF THE LIGHT PEDESTAL. GATE SHALL BE LOCKED WITH A LOCK PROVIDED BY THE AGENCY RESPONSIBLE FOR MAINTAINING THE LIGHT POLES. SEE SHEET TITLED "2-BAR METAL RAIL, SHEET 3 OF 4" FOR RAIL POST SPACING.

72" CHAIN LINK FENCE
 TOTAL PAY LENGTH 470.0 LIN. FT.

PROJECT NO. U-5008
 MECKLENBURG COUNTY
 STATION: 20+45.05 -L- P.O.T. = 14+54.24 -Y4- P.O.T.
 SHEET 1 OF 2

STATE OF NORTH CAROLINA
 DEPARTMENT OF TRANSPORTATION
 RALEIGH

CHAIN LINK FENCE
 DETAILS

| REVISIONS | | | | | |
|-----------|-----|-------|-----|-----|-------|
| NO. | BY: | DATE: | NO. | BY: | DATE: |
| 1 | | | 3 | | |
| 2 | | | 4 | | |

SHEET NO. S-44
 SHEETS 78

KCI ASSOCIATES OF NC, P.A.
 9741 SOUTHERN PINE BLVD
 SUITE J
 CHARLOTTE, NC 28273
 704-499-9452
 NC LICENSE NO. C-0764

NORTH CAROLINA
 PROFESSIONAL
 SEAL
 032954
 ENGINEER
 JARED C. MEDLIN
 2/19/2015

2/18/2015 Y:\D:\ewings\2011 DWG\Structures\RFC\SH44_U-5008_SD_FENCE_1.dgn

DJD
 DRAWN BY: C.L. RUDISILL DATE: OCT. 2014
 CHECKED BY: J.C. MEDLIN DATE: OCT. 2014