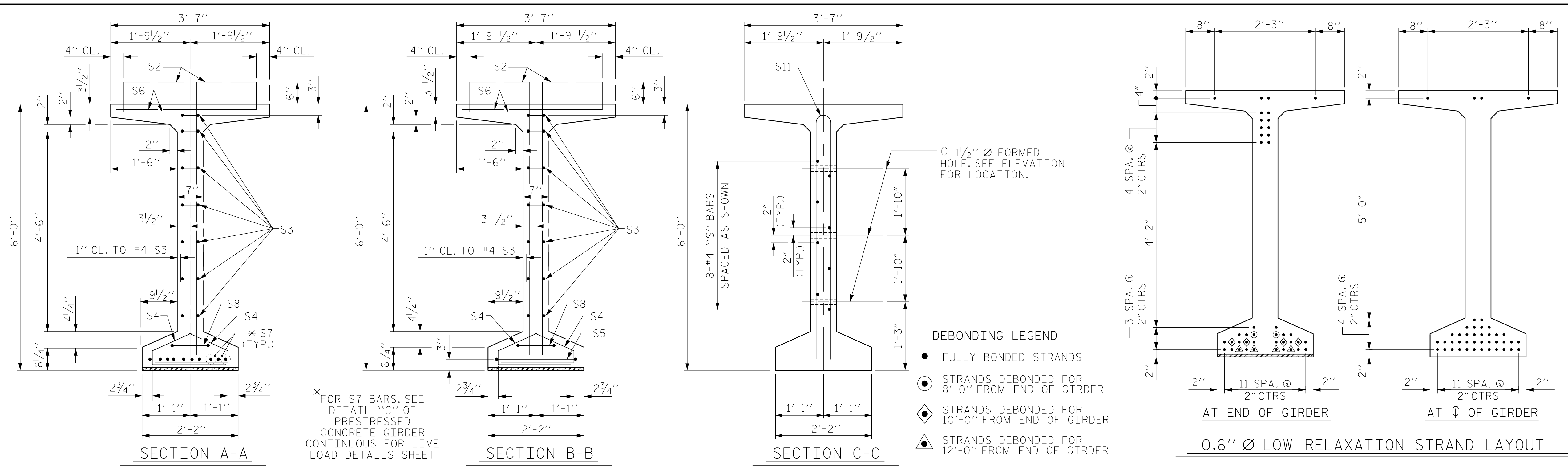


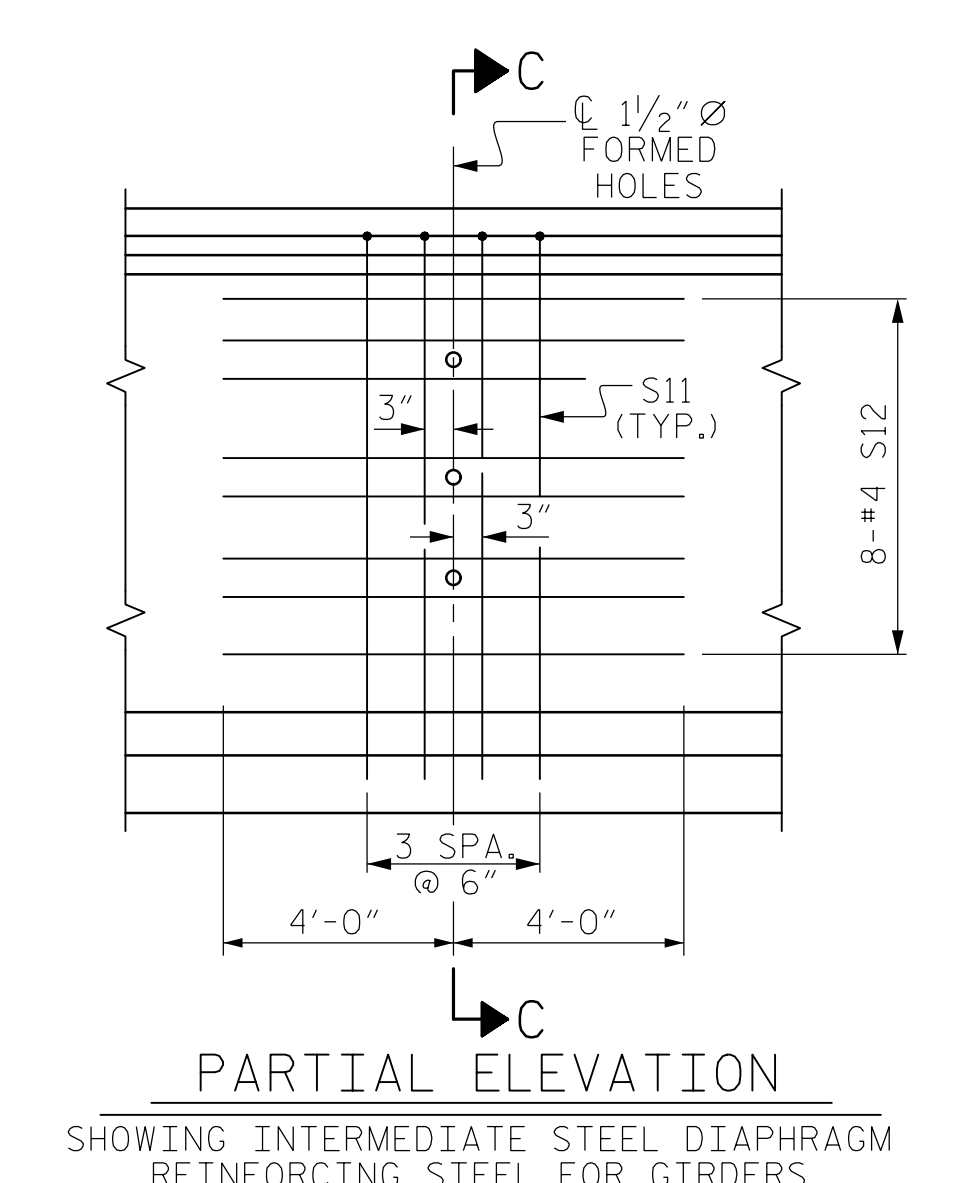
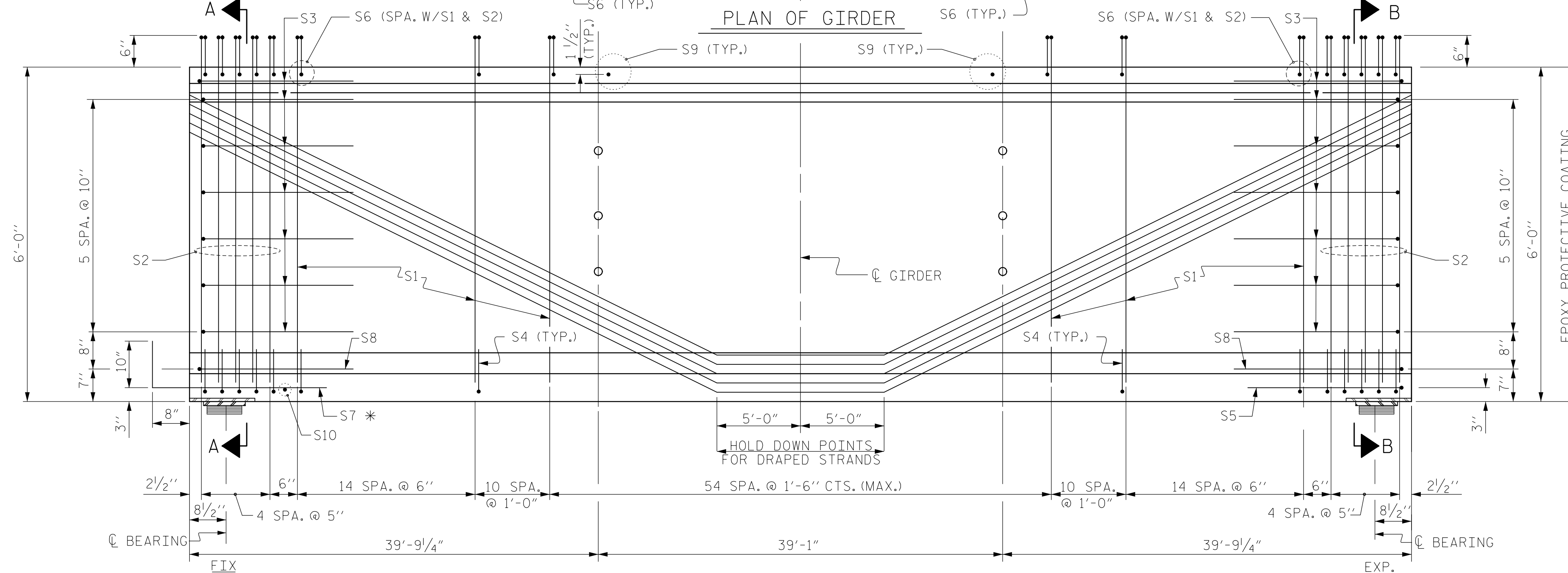
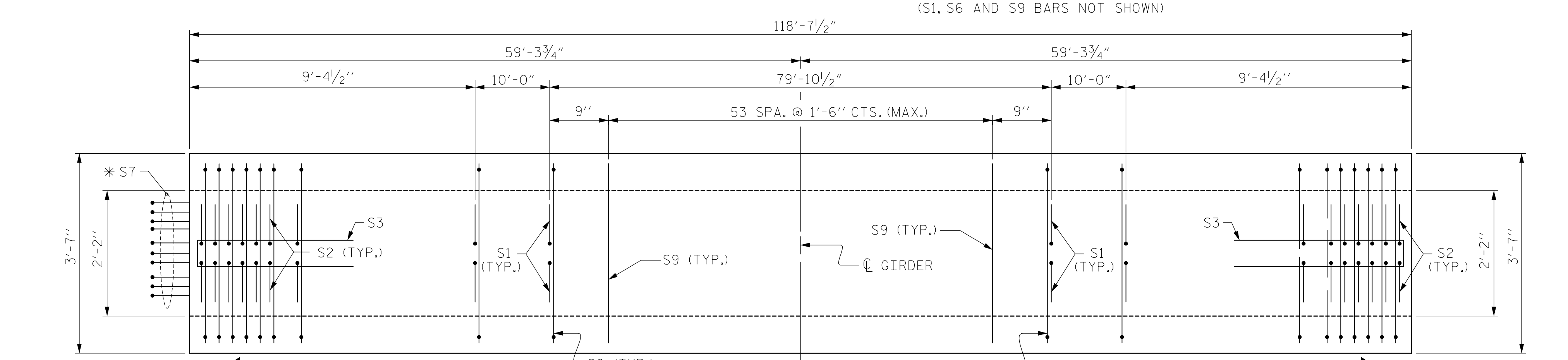
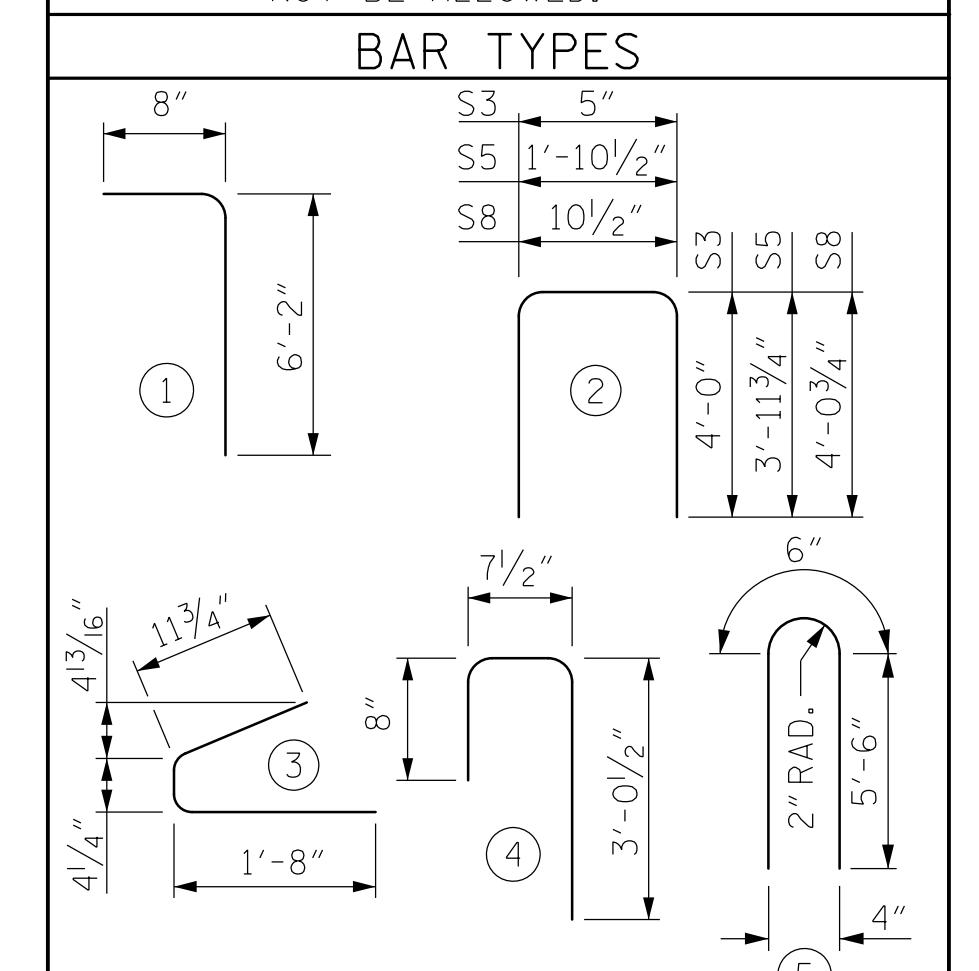
0400DEL_P30



| 0.6" Ø L. R. GRADE 270 STRANDS | | |
|--------------------------------|-------------------------------------|-------------------------------------|
| AREA (SQUARE INCHES) | ULTIMATE STRENGTH (LBS. PER STRAND) | APPLIED PRESTRESS (LBS. PER STRAND) |
| 0.217 | 58,600 | 43,950 |

| REINFORCING STEEL FOR ONE GDR | | | | | |
|-------------------------------|--------|------|------|--------|--------|
| BAR | NUMBER | SIZE | TYPE | LENGTH | WEIGHT |
| S1 | 206 | #5 | 1 | 6'-10" | 1,468 |
| S2 | 20 | #6 | 1 | 6'-10" | 205 |
| S3 | 14 | #4 | 2 | 8'-5" | 79 |
| S4 | 80 | #4 | 3 | 3'-0" | 160 |
| S5 | 1 | #5 | 2 | 9'-10" | 10 |
| S6 | 226 | #5 | 4 | 4'-4" | 1,021 |
| *S7 | 10 | #5 | STR | 3'-8" | 38 |
| S8 | 2 | #5 | 2 | 9'-0" | 19 |
| S9 | 54 | #5 | STR | 3'-3" | 183 |
| S10 | 1 | #3 | STR | 1'-10" | 1 |
| S11 | 8 | #5 | 5 | 11'-6" | 96 |
| S12 | 16 | #4 | STR | 8'-0" | 86 |

*NOTE: S7 BARS SHALL BE BENT BEFORE SHIPMENT. HEAT BENDING SHALL NOT BE ALLOWED.



| QUANTITIES FOR ONE GIRDER | | | |
|---------------------------|-------------------|--------------------|---------------------|
| GIRDER | REINFORCING STEEL | 8,000 PSI CONCRETE | 0.6" Ø L.R. STRANDS |
| | LB. | C.Y. | No. |
| GIRDER | 3,366 | 25.4 | 42 |

| GIRDERS REQUIRED | | |
|------------------|-------------|--------------|
| NUMBER | LENGTH | TOTAL LENGTH |
| 8 | 118'-7 1/2" | 949'-0" |

PROJECT NO. U-5008
 MECKLENBURG COUNTY
 STATION: 20+45.05 -L- P.O.T. = 14+54.24 -Y4- P.O.T.

STATE OF NORTH CAROLINA
 DEPARTMENT OF TRANSPORTATION
 RALEIGH

72" PRESTRESSED CONCRETE MODIFIED BULB TEE CONTINUOUS FOR LIVE LOAD SPAN G

| REVISIONS | | | | | |
|-----------|-----|-------|-----|-----|-------|
| NO. | BY: | DATE: | NO. | BY: | DATE: |
| 1 | | | 3 | | |
| 2 | | | 4 | | |

SHEET NO. S-27
 SHEETS 78

2/18/2015 Y:\D:\Drawings\2011 DWG\NB11-11 Sugar Creek Rd - NCDOT\Structures\RFC\SH27-U-5008_SD_PCC-1_Span_G.dgn
 D:\J

DRAWN BY: M.S.BURGESS DATE: OCT. 2014
 CHECKED BY: J.C.MEDLIN DATE: OCT. 2014

