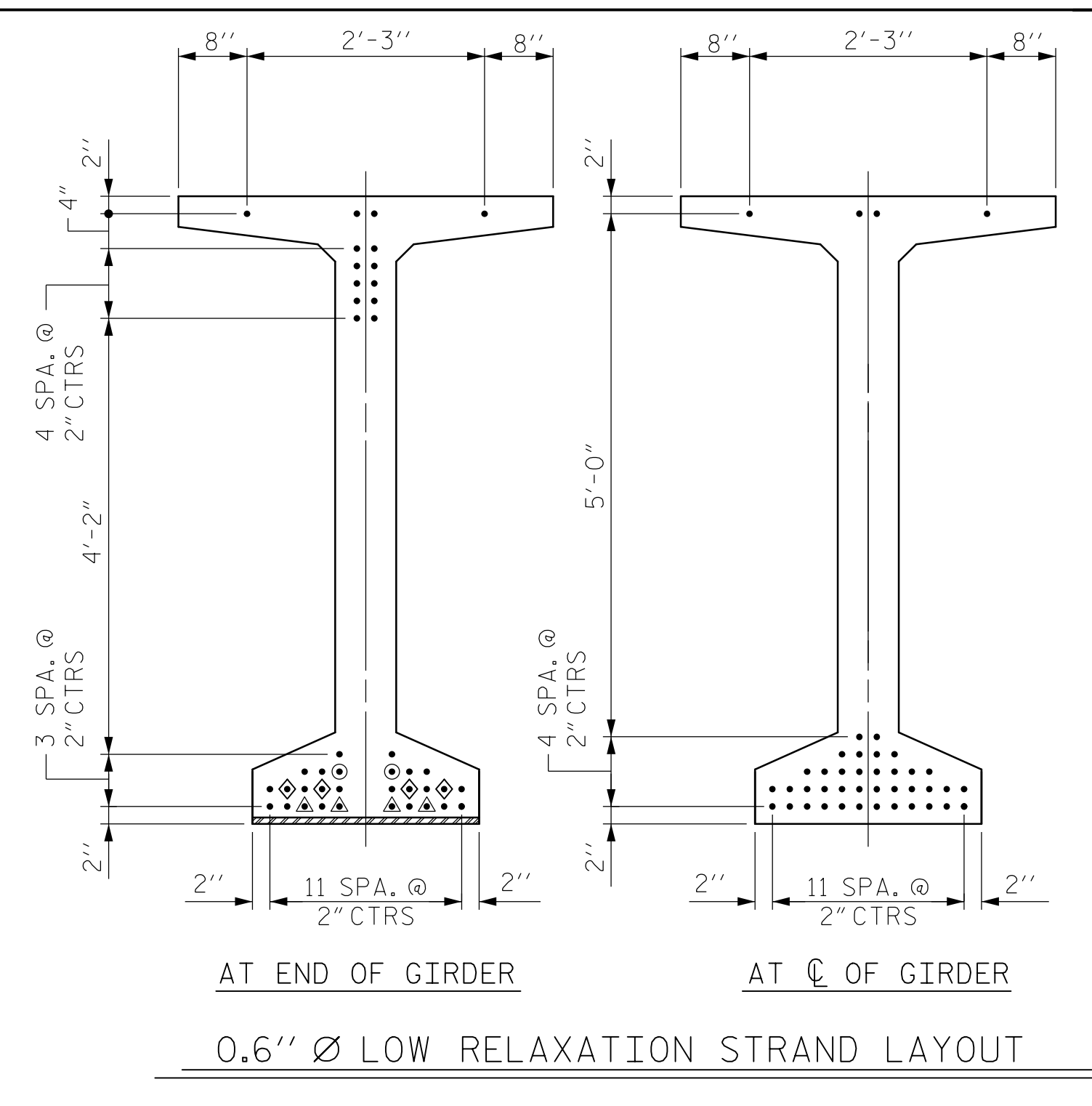
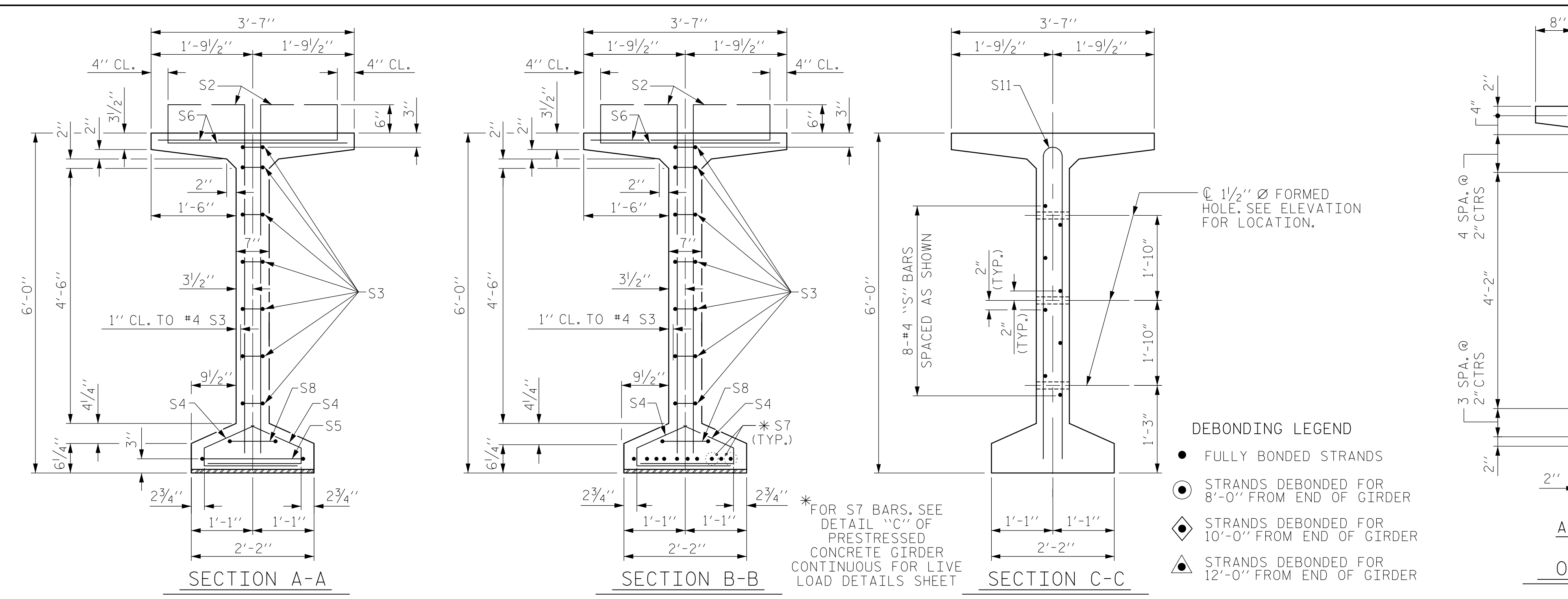


0400DEL\_P30

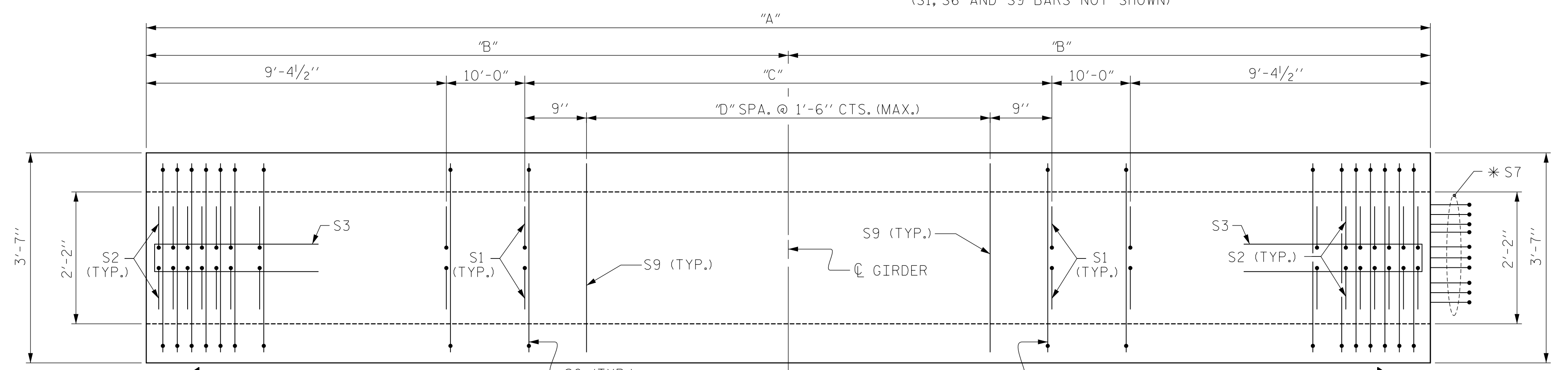


| 0.6" Ø L. R. GRADE 270 STRANDS |                                     |                                     |  |
|--------------------------------|-------------------------------------|-------------------------------------|--|
| AREA (SQUARE INCHES)           | ULTIMATE STRENGTH (LBS. PER STRAND) | APPLIED PRESTRESS (LBS. PER STRAND) |  |
| 0.217                          | 58,600                              | 43,950                              |  |

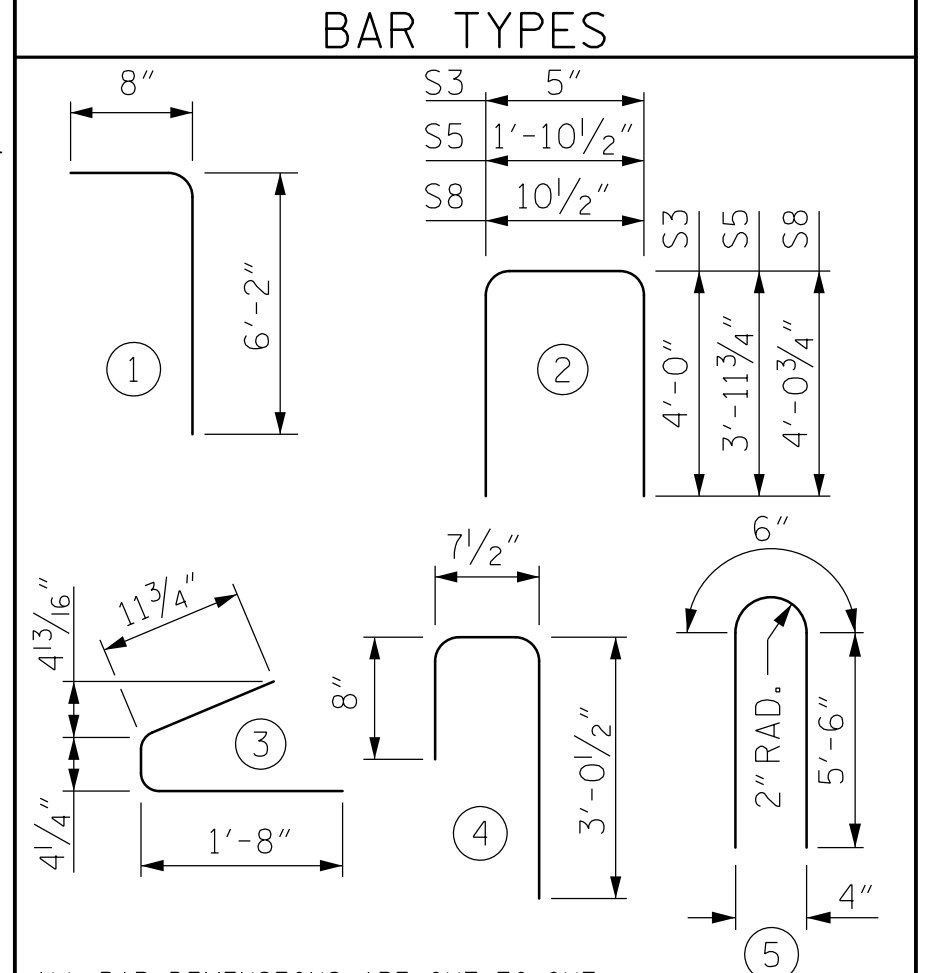
| REINFORCING STEEL FOR ONE GDR |        |      |      |        |        |
|-------------------------------|--------|------|------|--------|--------|
| BAR                           | NUMBER | SIZE | TYPE | LENGTH | WEIGHT |
| S1                            | "H"    | #5   | 1    | 6'-10" | "L"    |
| S2                            | 20     | #6   | 1    | 6'-10" | 205    |
| S3                            | 14     | #4   | 2    | 8'-5"  | 79     |
| S4                            | 80     | #4   | 3    | 3'-0"  | 160    |
| S5                            | 1      | #5   | 2    | 9'-10" | 10     |
| S6                            | "J"    | #5   | 4    | 4'-4"  | "M"    |
| *S7                           | 10     | #5   | STR  | 3'-8"  | 38     |
| S8                            | 2      | #5   | 2    | 9'-0"  | 19     |
| S9                            | "K"    | #5   | STR  | 3'-3"  | "N"    |
| S10                           | 1      | #3   | STR  | 1'-10" | 1      |
| S11                           | 8      | #5   | 5    | 11'-6" | 96     |
| S12                           | 16     | #4   | STR  | 8'-0"  | 86     |

\* NOTE: S7 BARS SHALL BE BENT BEFORE SHIPMENT. HEAT BENDING SHALL NOT BE ALLOWED.



| GIRDER | "A"          | "B"          | "C"          | "D" | "E" | "F"           |
|--------|--------------|--------------|--------------|-----|-----|---------------|
| D1     | 118'-4 1/8"  | 59'-2 1/16"  | 79'-7 1/8"   | 53  | 54  | 39'-6 3/16"   |
| D2     | 118'-6 1/8"  | 59'-3 1/16"  | 79'-9 1/8"   | 53  | 54  | 39'-7 15/16"  |
| D3     | 118'-9 1/8"  | 59'-4 1/16"  | 80'-0 1/8"   | 53  | 54  | 39'-9 1/16"   |
| D4     | 119'-0 3/8"  | 59'-6 1/16"  | 80'-3 3/8"   | 53  | 54  | 39'-10 11/16" |
| D5     | 119'-3 1/8"  | 59'-7 3/16"  | 80'-6 1/8"   | 53  | 54  | 40'-0 1/16"   |
| D6     | 119'-5 1/8"  | 59'-8 1/16"  | 80'-8 1/8"   | 53  | 54  | 40'-1 1/16"   |
| D7     | 119'-8 1/8"  | 59'-10 1/16" | 80'-11 1/16" | 53  | 54  | 40'-2 13/16"  |
| D8     | 119'-11 3/8" | 59'-11 1/16" | 81'-2 3/8"   | 54  | 55  | 40'-4 1/16"   |

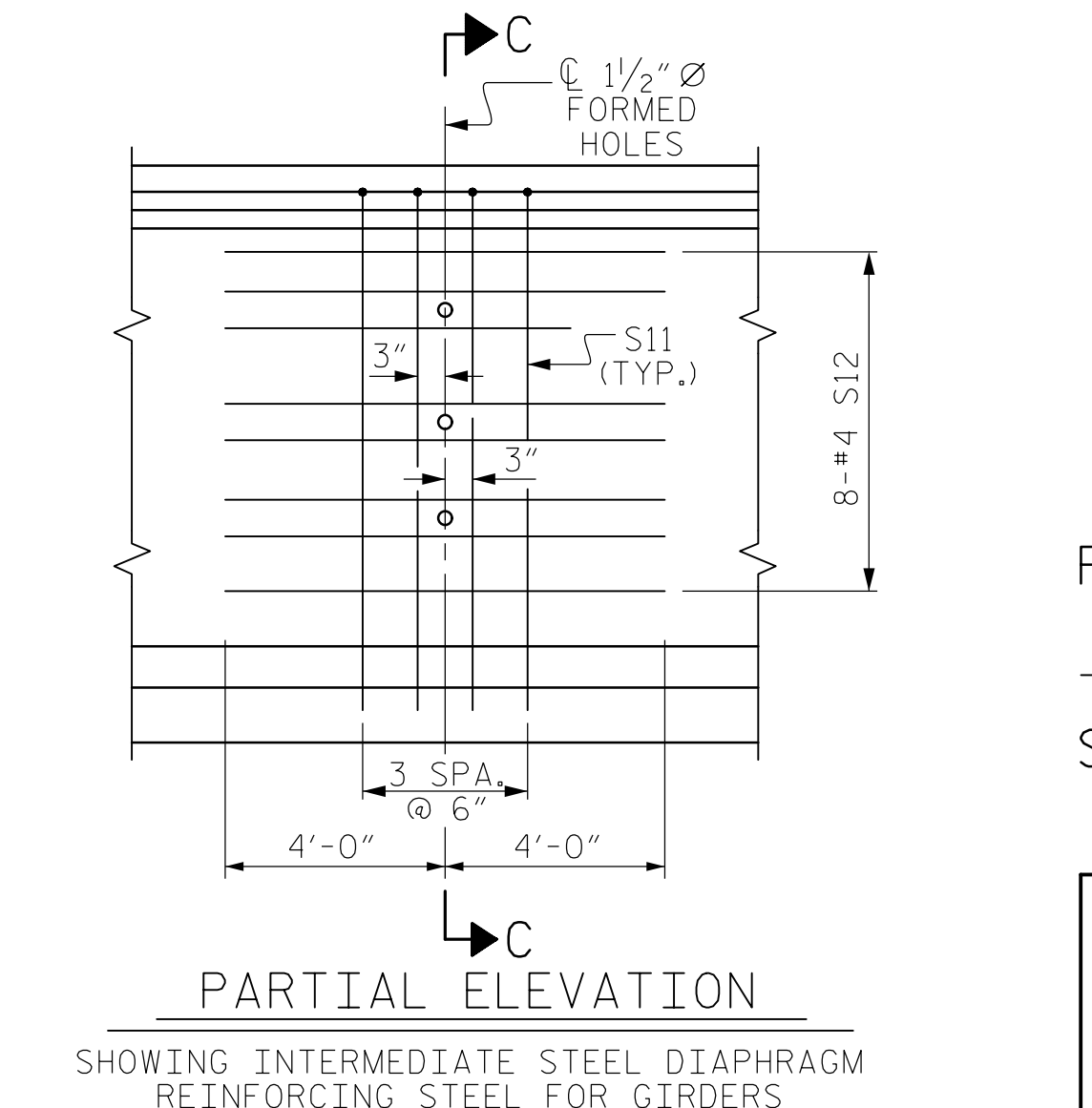
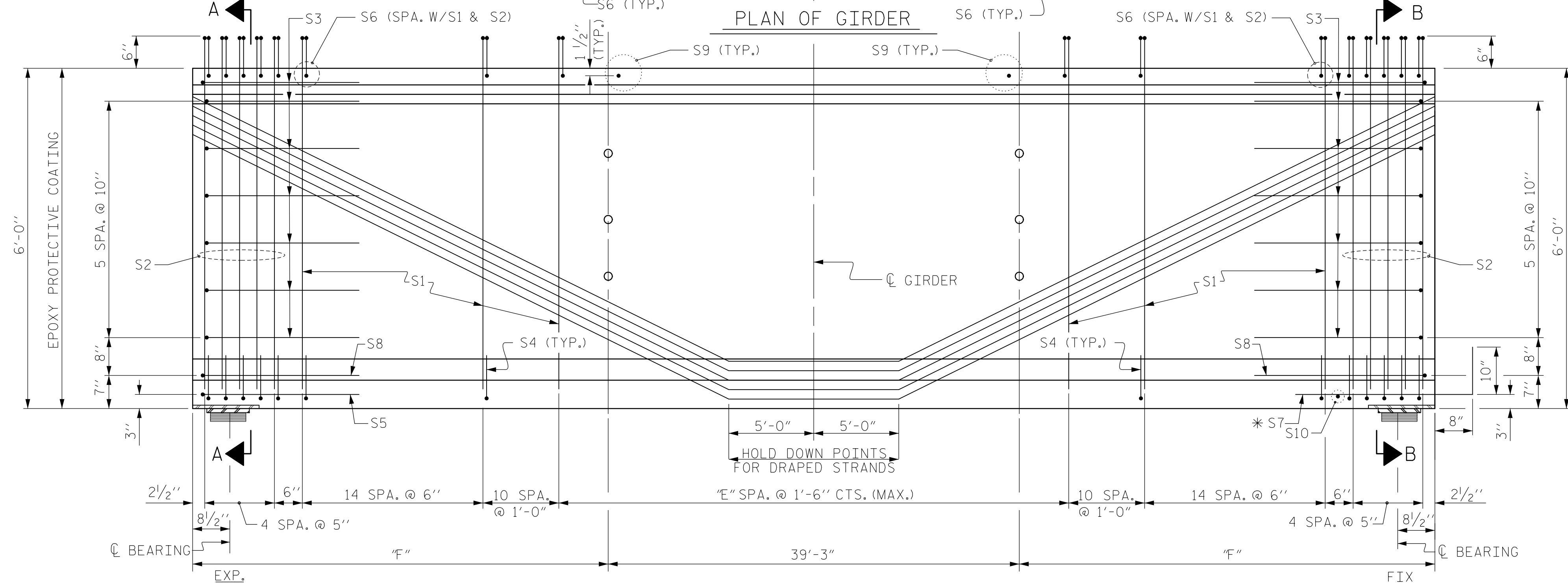
| GIRDER | "H" | "J" | "K" | "L"   | "M"   | "N" | "P"   | "R"  |
|--------|-----|-----|-----|-------|-------|-----|-------|------|
| D1     | 206 | 226 | 54  | 1,468 | 1,021 | 183 | 3,366 | 25.4 |
| D2     | 206 | 226 | 54  | 1,468 | 1,021 | 183 | 3,366 | 25.4 |
| D3     | 206 | 226 | 54  | 1,468 | 1,021 | 183 | 3,366 | 25.5 |
| D4     | 206 | 226 | 54  | 1,468 | 1,021 | 183 | 3,366 | 25.5 |
| D5     | 206 | 226 | 54  | 1,468 | 1,021 | 183 | 3,366 | 25.6 |
| D6     | 206 | 226 | 54  | 1,468 | 1,021 | 183 | 3,366 | 25.6 |
| D7     | 206 | 226 | 54  | 1,468 | 1,021 | 183 | 3,366 | 25.7 |
| D8     | 208 | 228 | 55  | 1,482 | 1,030 | 186 | 3,392 | 25.7 |



ALL BAR DIMENSIONS ARE OUT-TO-OUT

| GIRDER | REINFORCING STEEL |      | 8,000 PSI CONCRETE | 0.6" Ø L.R. STRANDS |
|--------|-------------------|------|--------------------|---------------------|
|        | LB.               | C.Y. | No.                |                     |
| GIRDER | "P"               | "R"  |                    | 42                  |

| GIRDERS REQUIRED |        |              |
|------------------|--------|--------------|
| NUMBER           | LENGTH | TOTAL LENGTH |
| 8                | "A"    | 953'-2"      |



PROJECT NO. U-5008  
 MECKLENBURG COUNTY  
 STATION: 20+45.05 -L- P.O.T. = 14+54.24 -Y4- P.O.T.

STATE OF NORTH CAROLINA  
 DEPARTMENT OF TRANSPORTATION  
 RALEIGH

72" PRESTRESSED CONCRETE MODIFIED BULB TEE CONTINUOUS FOR LIVE LOAD SPAN D

| REVISIONS |     |       |     |     |       |
|-----------|-----|-------|-----|-----|-------|
| NO.       | BY: | DATE: | NO. | BY: | DATE: |
| 1         |     |       | 3   |     |       |
| 2         |     |       | 4   |     |       |

SHEET NO. S-24  
 SHEETS 78

KCI ASSOCIATES OF NC, P.A.  
 9741 SOUTHERN PINE BLVD SUITE J  
 CHARLOTTE, NC 28273  
 704-499-9452  
 NC LICENSE No. C-0764

NORTH CAROLINA PROFESSIONAL SEAL 032954 ENGINEER JARED C. MEDLIN  
 2/19/2015

2/18/2015 Y:\D:\ewings\2011 DWG\NB11-11 Sugar Creek Rd - NCDOT\Structures\RFC\SH24\_U-5008\_SD\_PCC-1\_Span\_D.dgn  
 D:\J

DRAWN BY: M.S.BURGESS DATE: OCT. 2014  
 CHECKED BY: J.C.MEDLIN DATE: OCT. 2014