

TOTAL BILL OF MATERIAL

	FOUNDATION EXCAVATION	4'-0" DIA. DRILLED PIERS IN SOIL	4'-0" DIA. DRILLED PIERS NOT IN SOIL	PERM. STEEL CASING FOR 4'-0" Ø DRILLED PIER	PDA TESTING	SID TESTING	SPT TESTING	CSL TESTING	REINFORCED CONCRETE DECK SLAB	GROOVING BRIDGE FLOORS	CLASS A CONCRETE (BRIDGE)	BRIDGE APPROACH SLABS	REINFORCING STEEL (BRIDGE)	SPIRAL COLUMN REINFORCING STEEL	MODIFIED 72" PRESTRESSED CONC. GIRDERS	HP14x89 STEEL PILES	STEEL PILE POINTS	TWO BAR METAL RAIL	1'-2" x 2'-6" CONCRETE PARAPET	72" CHAIN LINK FENCE	4" SLOPE PROTECTION	ELASTOMERIC BEARINGS	EXPANSION JOINT SEALS	ELECTRICAL CONDUIT SYSTEM FOR SIGNALS	ELECTRICAL CONDUIT SYSTEM	ARCHITECTURAL CONCRETE SURFACE FINISH		
	CU. YDS.	LIN.FT.	LIN.FT.	LIN.FT.	EA.	EA.	EA.	EA.	SQ. FT.	SQ. FT.	CU. YDS.	LUMP SUM	LBS.	LBS.	NO.	LIN.FT.	NO.	LIN.FT.	EA.	LIN.FT.	LIN.FT.	LIN.FT.	SQ. YDS.	LUMP SUM	LUMP SUM	LUMP SUM	LUMP SUM	LUMP SUM
SUPERSTRUCTURE									59,971	44,413		LUMP SUM			56	6,699.7				2,718.3	1,687.2	470.0		LUMP SUM	LUMP SUM	LUMP SUM		
END BENT NO. 1					2						71.3		9,418			12	720	12					40					
BENT NO. 1		158	74								99.8		39,747	8,007														
BENT NO. 2	45	74	102	52							228.2		45,844	8,108														
BENT NO. 3		140	48								90.4		33,708	7,389														
BENT NO. 4		108	68								89.7		32,878	6,992														
BENT NO. 5		168	48								83.2		36,216	7,510														
BENT NO. 6		131	89								84.0		36,428	7,069														
END BENT NO. 2					2						55.5		8,032			11	475	11					25					
TOTAL	45	779	429	52	4	6	6	6	59,971	44,413	802.1	LUMP SUM	242,271	45,075	56	6,699.7	23	1,195	23	2,718.3	1,687.2	470.0	65	LUMP SUM	LUMP SUM	LUMP SUM	LUMP SUM	LUMP SUM

GENERAL NOTES:

ASSUMED LIVE LOAD = HL-93 OR ALTERNATE LOADING. FOR CRANE SAFETY, SEE SPECIAL PROVISIONS.

THIS BRIDGE HAS BEEN DESIGNED IN ACCORDANCE WITH THE AASHTO LRFD BRIDGE DESIGN SPECIFICATIONS. FOR GROUT FOR STRUCTURES, SEE SPECIAL PROVISIONS.

THIS BRIDGE IS LOCATED IN SEISMIC ZONE 1. THE CONTRACTOR SHALL PROVIDE INDEPENDENT ASSURANCE SAMPLES OF REINFORCING STEEL AS FOLLOWS:
 FOR PROJECTS REQUIRING UP TO 400 TONS OF REINFORCING STEEL, ONE 30 INCH SAMPLE OF EACH SIZE BAR USED, AND FOR PROJECTS REQUIRING OVER 400 TONS OF REINFORCING STEEL, TWO 30 INCH SAMPLES OF EACH SIZE BAR USED. THE BARS FROM WHICH THE SAMPLES ARE TAKEN MUST THEN BE SPLICED WITH REPLACEMENT BARS OF THE SIZE AND LENGTH OF THE SAMPLE, PLUS A MINIMUM LAP SPLICE OF THIRTY BAR DIAMETERS. PAYMENT FOR THE SAMPLES OF REINFORCING STEEL SHALL BE CONSIDERED INCIDENTAL TO VARIOUS PAY ITEMS.

FOR UTILITY INFORMATION, SEE UTILITY PLANS AND SPECIAL PROVISIONS. NEEDLE BEAMS WILL NOT BE ALLOWED UNLESS OTHERWISE CALLED FOR ON THE PLANS OR APPROVED BY THE ENGINEER.

FOR OTHER DESIGN DATA AND GENERAL NOTES, SEE SHEET SN. PRESTRESSED CONCRETE DECK PANELS MAY BE USED IN LIEU OF METAL STAY-IN-PLACE FORMS IN ACCORDANCE WITH ARTICLE 420-3 OF THE STANDARD SPECIFICATIONS.

FOR SUBMITTAL OF WORKING DRAWINGS, SEE SPECIAL PROVISIONS. REMOVABLE FORMS MAY BE USED IN LIEU OF METAL STAY-IN-PLACE FORMS IN ACCORDANCE WITH ARTICLE 420-3 OF THE STANDARD SPECIFICATIONS.

FOR FALSEWORK AND FORMWORK, SEE SPECIAL PROVISIONS. THE RAILROAD TRACK TOP OF RAIL ELEVATIONS ON THE PLANS ARE FROM THE BEST INFORMATION AVAILABLE. PRIOR TO BEGINNING BRIDGE CONSTRUCTION, VERIFY THE TOP OF RAIL ELEVATIONS AND REPORT ANY VARIATIONS TO THE ENGINEER. ANY PLAN REVISIONS NECESSARY TO ACHIEVE THE REQUIRED MINIMUM VERTICAL CLEARANCE WILL BE PROVIDED BY THE DEPARTMENT.

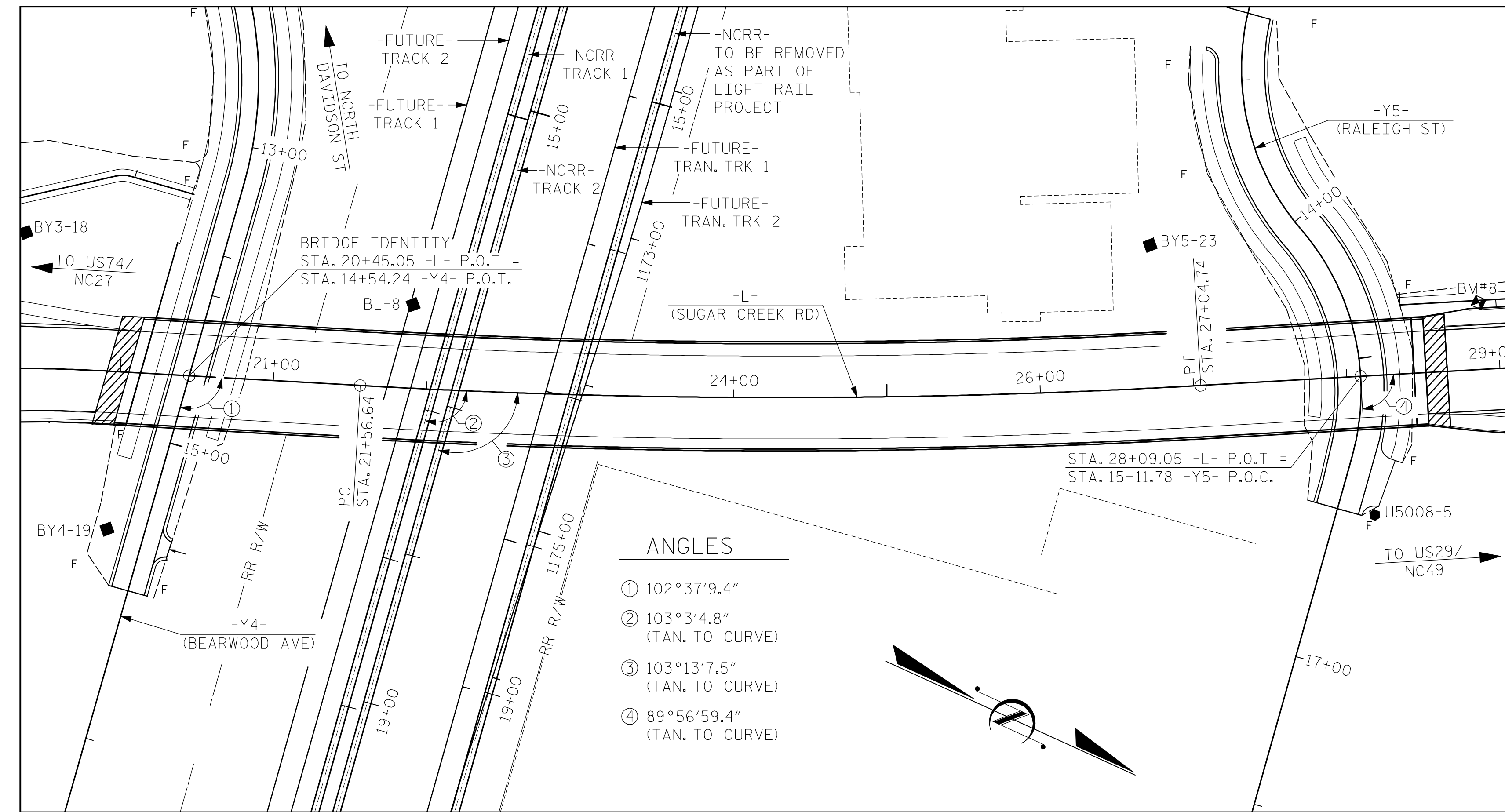
THE CLASS AA CONCRETE IN THE BRIDGE DECK SHALL CONTAIN FLY ASH OR GROUND GRANULATED BLAST FURNACE SLAG AT THE SUBSTITUTION RATE SPECIFIED IN ARTICLE 1024-1 AND IN ACCORDANCE WITH ARTICLES 1024-5 AND 1024-6 OF THE STANDARD SPECIFICATIONS. NO PAYMENT WILL BE MADE FOR THIS SUBSTITUTION AS IT IS CONSIDERED INCIDENTAL TO THE COST OF THE REINFORCED CONCRETE DECK SLAB.

FOR EROSION CONTROL MEASURES, SEE EROSION CONTROL PLANS.

THE LOCATION OF THE CONSTRUCTION JOINT IN THE DRILLED PIERS IS BASED ON AN APPROXIMATE GROUND LINE ELEVATION. IF THE CONSTRUCTION JOINT IS ABOVE THE ACTUAL GROUND ELEVATION, THE CONTRACTOR SHALL PLACE THE CONSTRUCTION JOINT 1 FT. BELOW THE GROUND LINE.

FOR PLACING LOAD ON STRUCTURE MEMBERS, SEE SPECIAL PROVISIONS.

FOR MAINTENANCE AND PROTECTION OF TRAFFIC BENEATH PROPOSED STRUCTURE, SEE SPECIAL PROVISIONS.



CONTROL DATUM

BM#8: N 551856, E 1464969; EL 732.71; L STA 28+89, 44 LT (RR SPIKE IN BASE OF 18" MAPLE)
 BL-8: N 551226.4580, E 1465274.9220; EL 743.52; Y4 STA 13+85.60, 126.56 LT
 BY3-18: N 550976.0330, E 1465321.2020; EL 742.15; OUTSIDE PROJECT LIMITS
 BY4-19: N 551104.4250, E 1465475.0100; EL 746.09; Y4 STA 15+65.03, 24.20 RT
 BY5-23: N 551645.7610, E 1465024.1500; EL 733.09; Y5 STA 13+69.86, 87.80 RT
 U5008-5: N 551852.0820, E 1465123.3050; EL 732.12; L STA 28+13.07, 90.81 RT
 U5008-5: N 551852.0820, E 1465123.3050; EL 732.12; Y5 STA 15+97.33, 24.55 LT

PROJECT NO. U-5008
 MECKLENBURG COUNTY
 STATION: 20+45.05 -L- P.O.T. =
 14+54.24 -Y4- P.O.T.
 SHEET 6 OF 6

STATE OF NORTH CAROLINA
 DEPARTMENT OF TRANSPORTATION
 RALEIGH
 GENERAL DRAWING

FOR BRIDGE ON SUGAR CREEK RD
 OVER BEARWOOD AVE, NCRR/NSRR,
 AND RALEIGH ST
 BTW US74/NC27 & US29/NC49

REVISIONS						SHEET NO.
NO.	BY:	DATE:	NO.	BY:	DATE:	S-6
1			3			SHEETS
2			4			78

KCI ASSOCIATES OF NC, P.A.
 9741 SOUTHERN PINE BLVD
 SUITE J
 CHARLOTTE, NC 28273
 704-499-9452
 NC LICENSE No. C-0764

MP. MAIN 374.02

Professional Engineer Seal: JARED C. MEDLIN, No. 032954, 7/8/2015