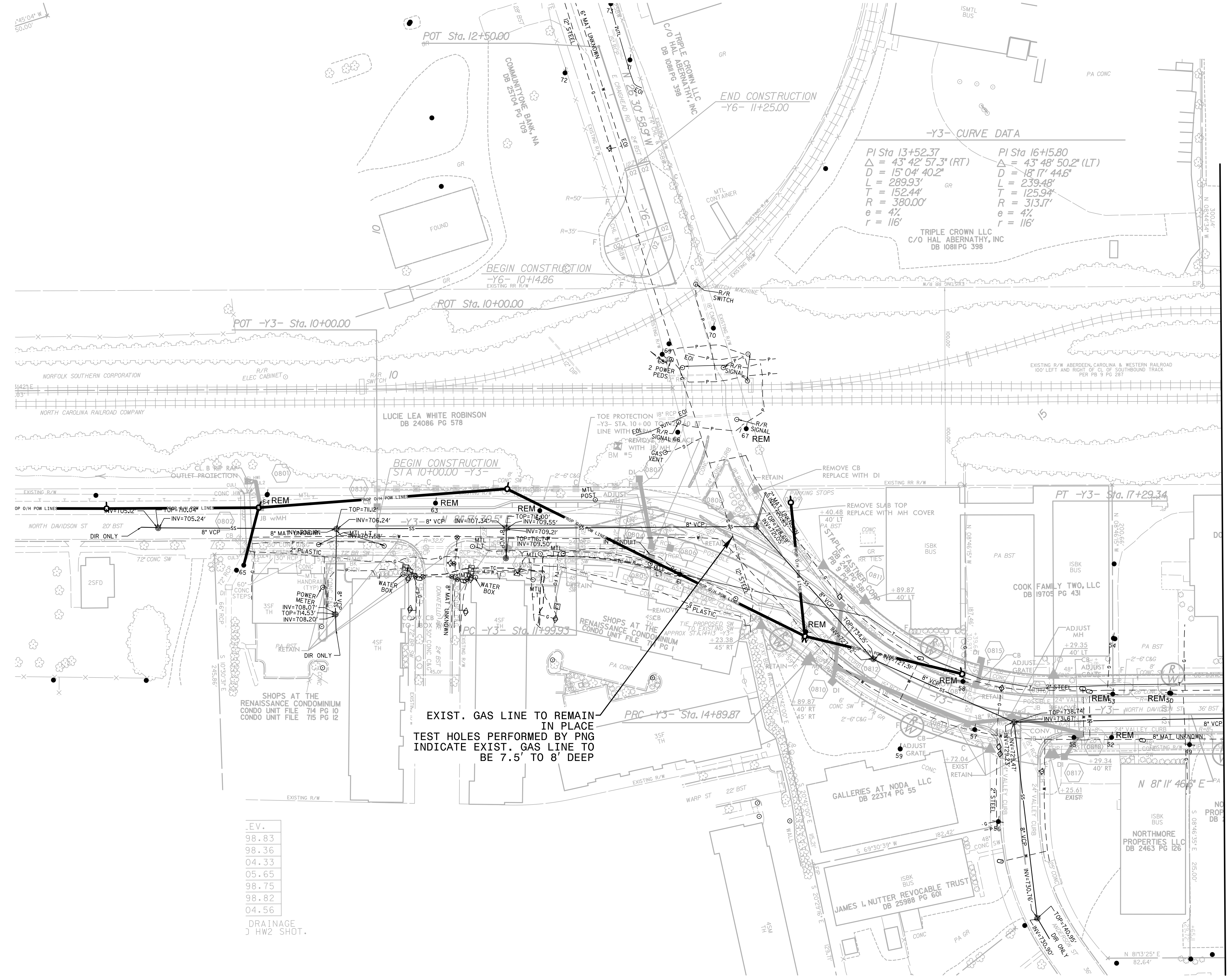
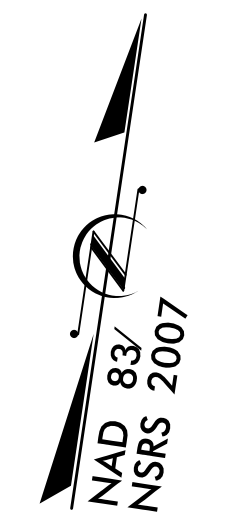
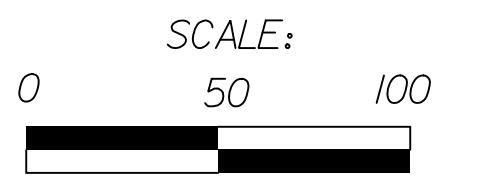


UTILITIES BY OTHERS

NOTE: ALL PROPOSED UTILITY WORK SHOWN ON THIS SHEET WILL BE DONE BY OTHERS



145°04' W
50.00'

-Y3- CURVE DATA
PI Sta 13+52.37 Δ = 43° 42' 57.3" (RT)
D = 15° 04' 40.2"
L = 289.93'
T = 152.44'
R = 380.00'
e = 4%
r = 116'
PI Sta 16+15.80 Δ = 43° 48' 50.2" (LT)
D = 18° 17' 44.6"
L = 239.48'
T = 125.94'
R = 313.17'
e = 4%
r = 116'

EXIST. GAS LINE TO REMAIN IN PLACE
TEST HOLES PERFORMED BY PNG
INDICATE EXIST. GAS LINE TO BE 7.5' TO 8' DEEP

LEV.

98.83
98.36
04.33
05.65
98.75
98.82
04.56

DRAINAGE
J HW2 SHOT.

MATCHLINE -Y3- STA.19+00 SEE SHEET UO-6

NORTH CAROLINA
DEPT. OF TRANSPORTATION
RALEIGH, NORTH CAROLINA

SUGAR CREEK ROAD AND NCR/NSRR
CROSSING NO. 715 352 GRADE SEPERATION

Designed By:	Checked By:	Date:	Sheet:	Of:
OTHERS	OTHERS	12-22-14	UO-7	UO-7

