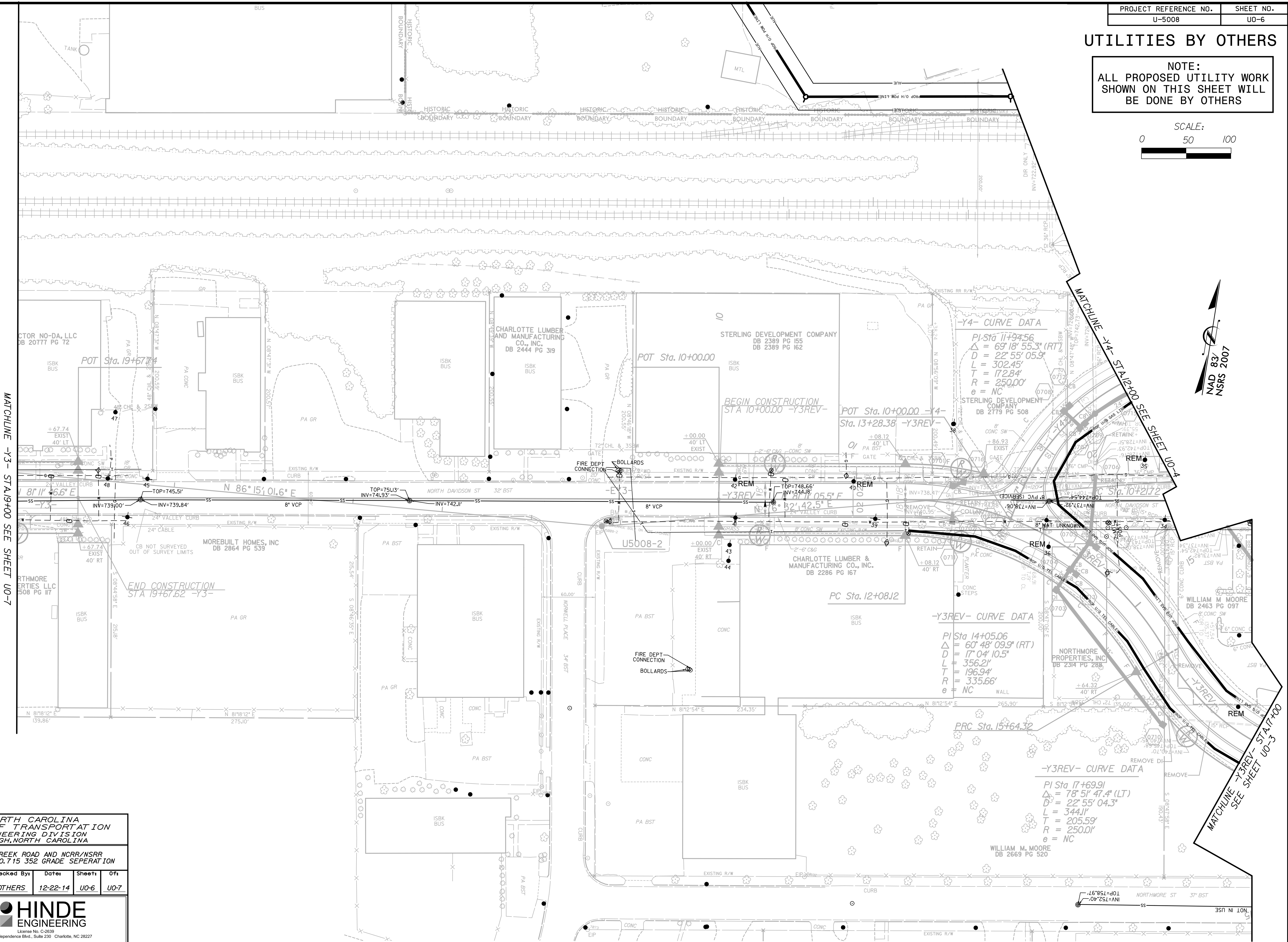
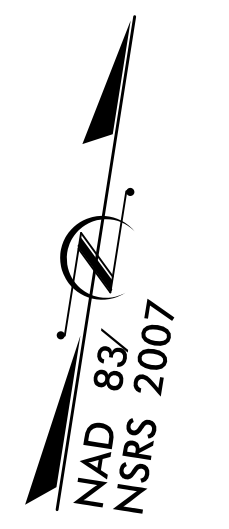
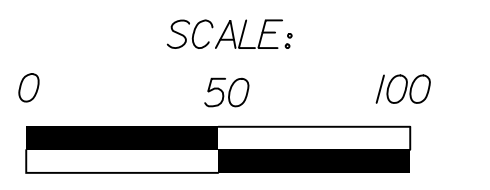


UTILITIES BY OTHERS

NOTE:
ALL PROPOSED UTILITY WORK
SHOWN ON THIS SHEET WILL
BE DONE BY OTHERS



MATCHLINE -Y3- STA 9+00 SEE SHEET UO-7

-Y4- CURVE DATA

PI Sta 11+94.56
 $\Delta = 69^\circ 18' 55.3''$ (RT)
 $D = 22^\circ 55' 05.9''$
 $L = 302.45'$
 $T = 172.84'$
 $R = 250.00'$
 $e = NC$

-Y3REV- CURVE DATA

PI Sta 14+05.06
 $\Delta = 60^\circ 48' 09.9''$ (RT)
 $D = 17^\circ 04' 10.5''$
 $L = 356.21'$
 $T = 196.94'$
 $R = 335.66'$
 $e = NC$

-Y3REV- CURVE DATA

PI Sta 17+69.91
 $\Delta = 78^\circ 51' 47.4''$ (LT)
 $D = 22^\circ 55' 04.3''$
 $L = 344.11'$
 $T = 205.59'$
 $R = 250.01'$
 $e = NC$

NORTH CAROLINA
DEPT. OF TRANSPORTATION
ENGINEERING DIVISION
RALEIGH, NORTH CAROLINA

SUGAR CREEK ROAD AND NCR/NARR
CROSSING NO. 715 352 GRADE SEPERATION

Designed By:	Checked By:	Date:	Sheet:	Of:
OTHERS	OTHERS	12-22-14	UO-6	UO-7

HINDE ENGINEERING
 License No. C-2839
 7520 E. Independence Blvd., Suite 230 Charlotte, NC 28227