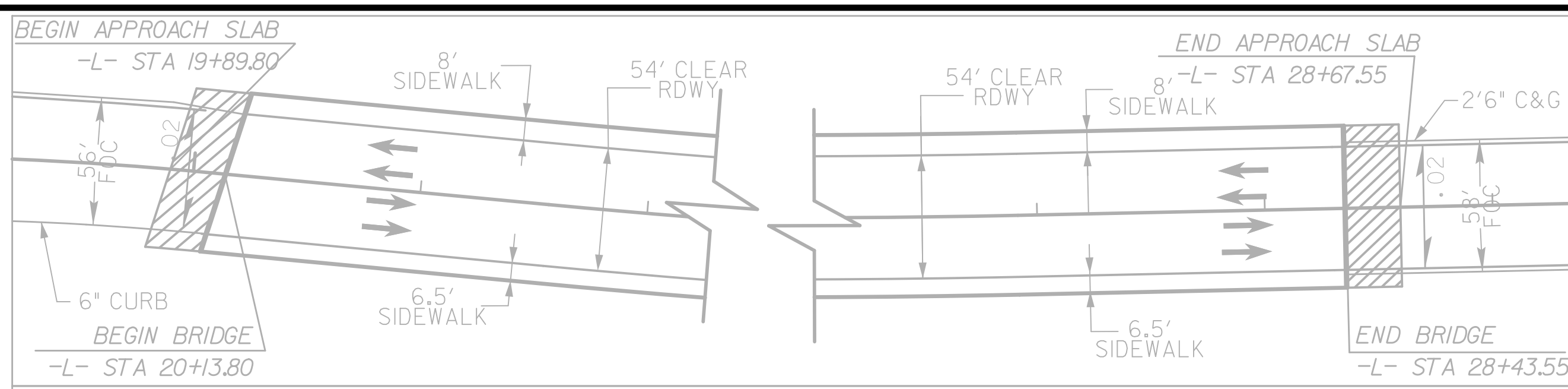
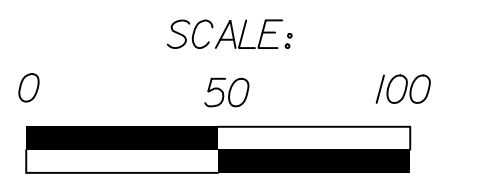
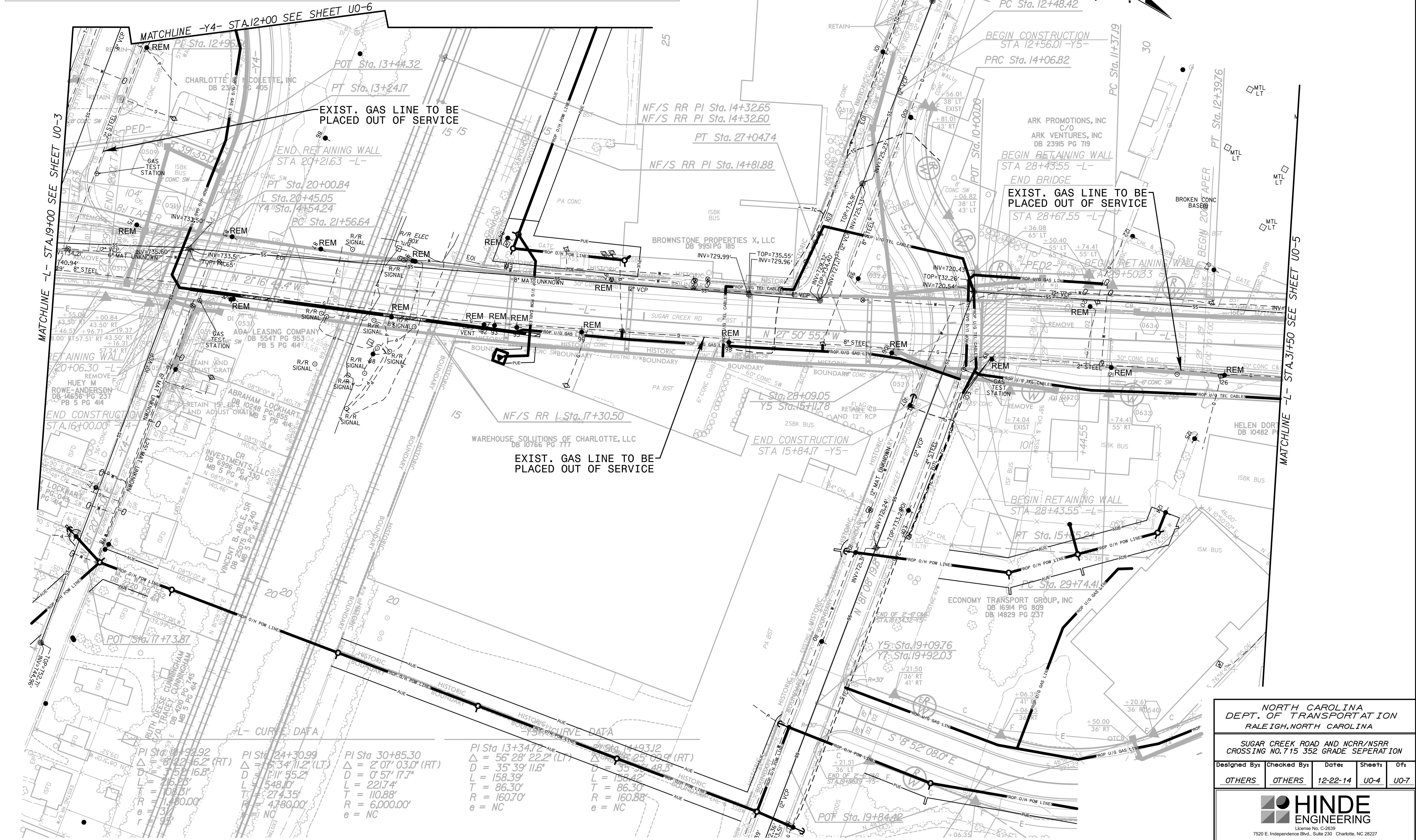


UTILITIES BY OTHERS

NOTE:
ALL PROPOSED UTILITY WORK SHOWN ON THIS SHEET WILL BE DONE BY OTHERS



Sketch showing Dimensions of Pavement and Shoulder in Relation to Proposed Bridge Width



MATCHLINE -Y4- STA.12+00 SEE SHEET U0-6

MATCHLINE -L- STA.19+00 SEE SHEET U0-3

MATCHLINE -L- STA.31+50 SEE SHEET U0-5

L- CURVE DATA

PI Sta. 19+92.92	PI Sta. 24+30.99	PI Sta. 30+85.30	PI Sta. 13+34.72
$\Delta = 56^{\circ} 28' 22.2''$ (RT)	$\Delta = 6^{\circ} 34' 11.2''$ (LT)	$\Delta = 2^{\circ} 07' 03.0''$ (RT)	$\Delta = 56^{\circ} 28' 22.2''$ (LT)
$D = 1152.168'$	$D = 1111.552'$	$D = 0^{\circ} 57' 17.7''$	$D = 35^{\circ} 39' 11.6''$
$L = 216.23'$	$L = 548.10'$	$L = 221.74'$	$L = 158.39'$
$T = 108.11'$	$T = 274.35'$	$T = 110.88'$	$T = 86.30'$
$R = 1130.00'$	$R = 4780.00'$	$R = 6000.00'$	$R = 160.70'$
$e = NC$	$e = NC$	$e = NC$	$e = NC$

S- CURVE DATA

CHANGING PI Sta. 1493.12	CHANGING PI Sta. 2560.09 (RT)
$\Delta = 35^{\circ} 39' 11.6''$	$\Delta = 150.42'$
$L = 158.39'$	$L = 86.30'$
$T = 86.30'$	$T = 86.30'$
$R = 160.88'$	$R = 160.88'$
$e = NC$	$e = NC$

NORTH CAROLINA
DEPT. OF TRANSPORTATION
RALEIGH, NORTH CAROLINA

SUGAR CREEK ROAD AND NCR/NRR
CROSSING NO. 715 352 GRADE SEPARATION

Designed By: OTHERS Checked By: OTHERS Date: 12-22-14 Sheet: U0-4 Of: U0-7

HINDE
ENGINEERING

7520 E. Independence Blvd., Suite 230 Charlotte, NC 28227