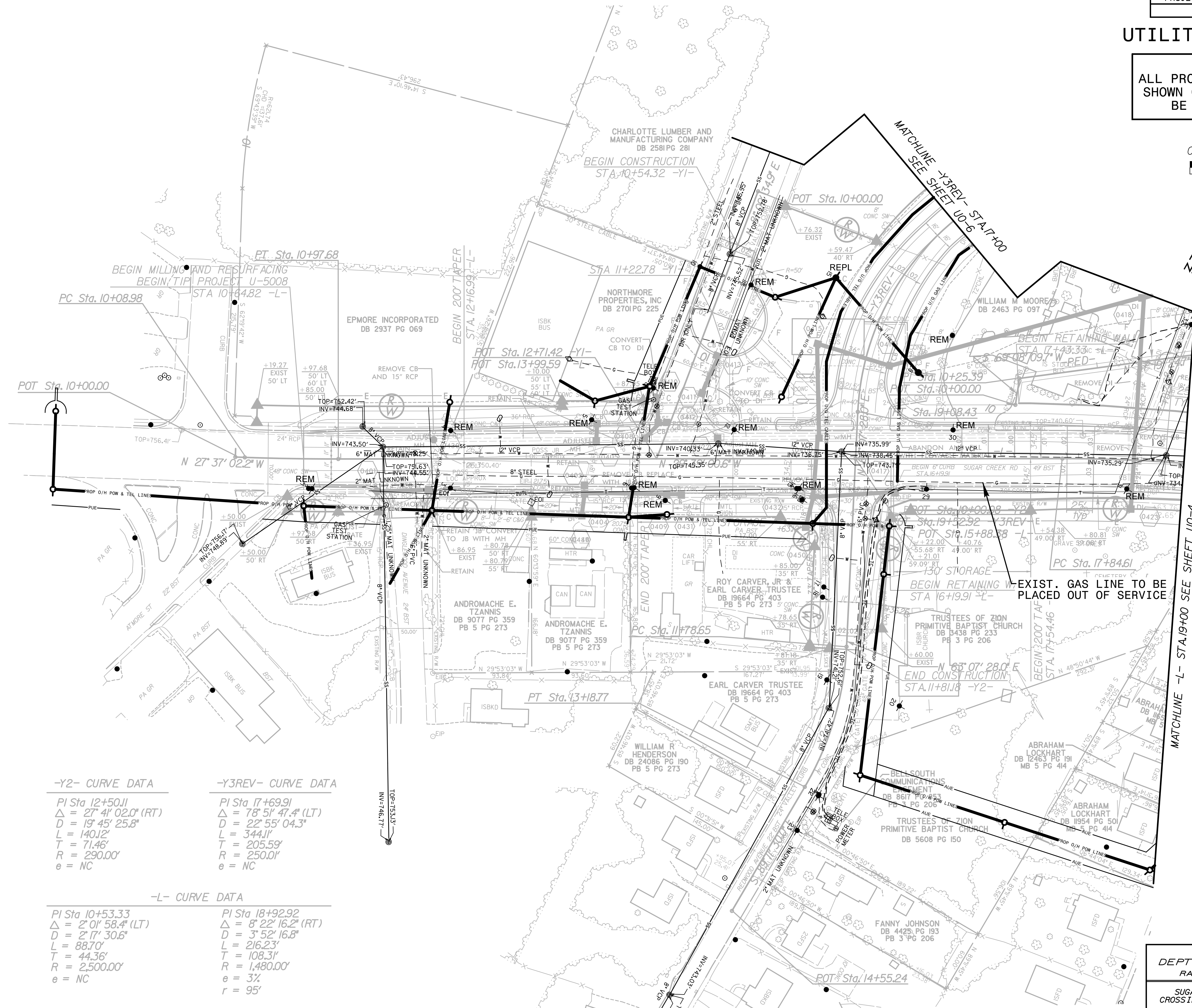
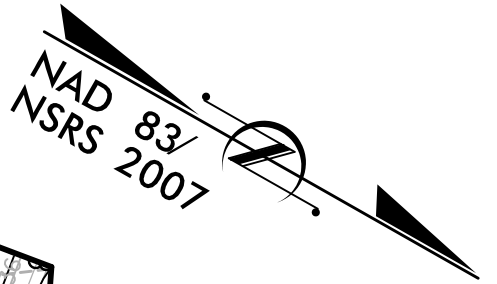


UTILITIES BY OTHERS

NOTE:
ALL PROPOSED UTILITY WORK
SHOWN ON THIS SHEET WILL
BE DONE BY OTHERS



-Y2- CURVE DATA

PI Sta 12+50.11
 $\Delta = 27^\circ 41' 02.0\" (RT)$
 $D = 19^\circ 45' 25.8\"$
 $L = 140.12'$
 $T = 71.46'$
 $R = 290.00'$
 $e = NC$

-Y3REV- CURVE DATA

PI Sta 17+69.91
 $\Delta = 78^\circ 51' 47.4\" (LT)$
 $D = 22^\circ 55' 04.3\"$
 $L = 344.11'$
 $T = 205.59'$
 $R = 250.01'$
 $e = NC$

-L- CURVE DATA

PI Sta 10+53.33
 $\Delta = 2^\circ 01' 58.4\" (LT)$
 $D = 2^\circ 17' 30.6\"$
 $L = 88.70'$
 $T = 44.36'$
 $R = 2,500.00'$
 $e = NC$

PI Sta 18+92.92
 $\Delta = 8^\circ 22' 16.2\" (RT)$
 $D = 3^\circ 52' 16.8\"$
 $L = 216.23'$
 $T = 108.31'$
 $R = 1,480.00'$
 $r = 95'$

NORTH CAROLINA
 DEPT. OF TRANSPORTATION
 RALEIGH, NORTH CAROLINA

SUGAR CREEK ROAD AND NCRR/NSRR
 CROSSING NO. 715 352 GRADE SEPERATION

Designed By:	Checked By:	Date:	Sheet:	Of:
OTHERS	OTHERS	12-22-14	UO-3	UO-7



7520 E. Independence Blvd., Suite 230 Charlotte, NC 28227