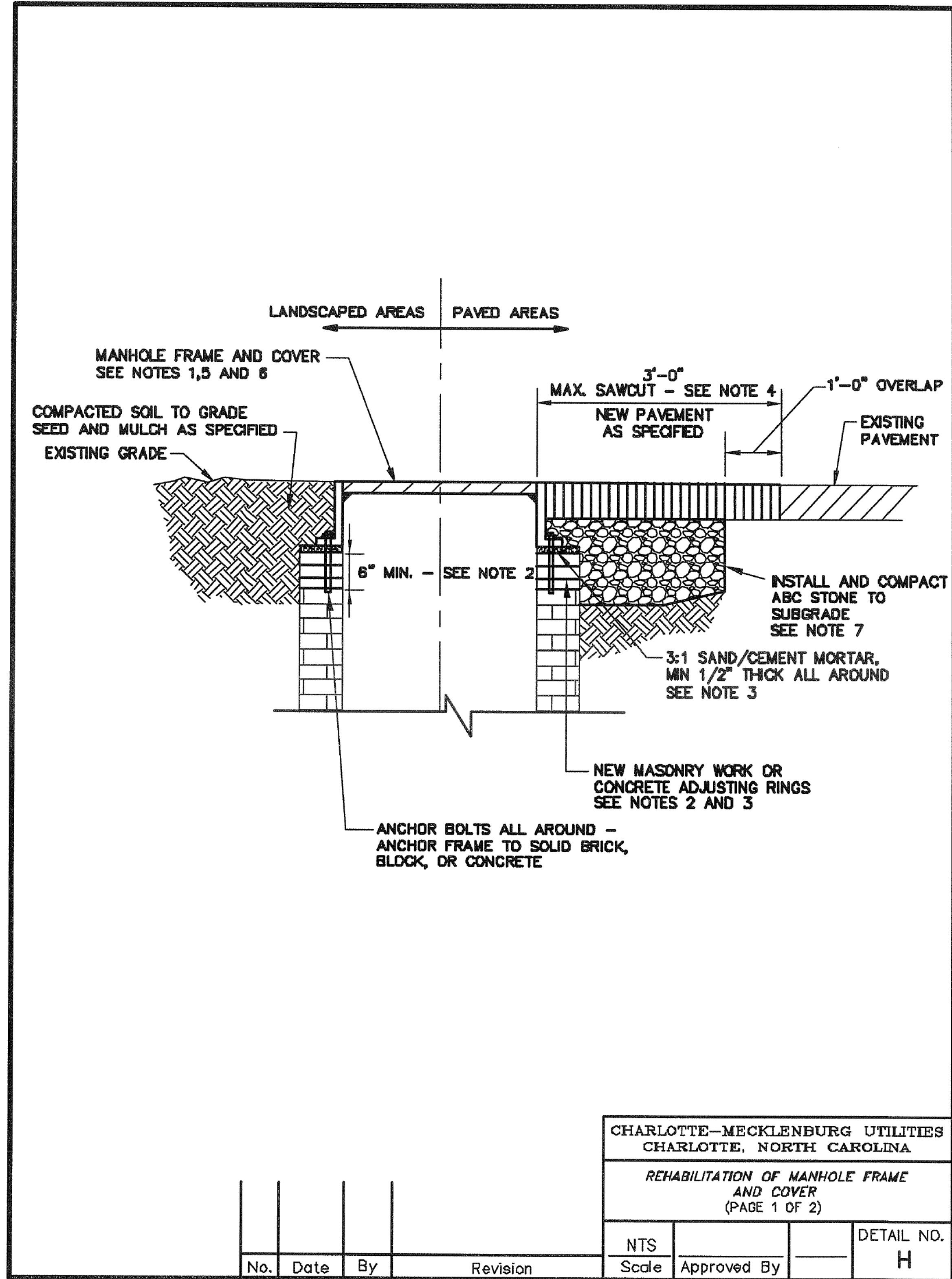


CLTWater STANDARD DETAILS



NOTES:

1. CONTRACTOR SHALL REFER TO THIS DETAIL WHEN RAISING MANHOLES AND WHEN RESETTING OR REPLACING EXISTING FRAMES AND COVERS. ALL REHABILITATION OF FRAMES AND COVERS SHALL BE COMPLETED PRIOR TO OTHER MANHOLE REHABILITATION WORK. THIS DETAIL ILLUSTRATES MANHOLES AT GRADE. FOR FRAME AND COVERS ABOVE GRADE, WORK SHALL BE IN ACCORDANCE WITH THIS DETAIL AND ALL OTHER REQUIREMENTS IN CMUD'S STANDARD SPECIFICATIONS AND DETAILS. SEE NOTE 8.
2. CONTRACTOR TO REMOVE AT LEAST 6" OF EXISTING BRICK AND/OR MATERIAL PRIOR TO INSTALLING NEW MASONRY OR CONCRETE ADJUSTING RINGS, TO PROVIDE A NEW SOLID SURFACE FOR SEATING THE FRAME AND TO PROVIDE A LEAK-TIGHT SEAL.
3. REMOVE ALL LOOSE BRICKS AND MORTAR AND PROVIDE A SMOOTH LEVEL SURFACE PRIOR TO INSTALLING MASONRY OR CONCRETE ADJUSTING RINGS. BRUSH SURFACE WITH STIFF WIRE BRUSH PRIOR TO PLACING MORTAR.
4. IN PAVED AREAS, PAVEMENT SHALL BE SAW-CUT NEATLY IN A SQUARE AROUND EXISTING MANHOLES.
5. MANHOLE COVER TO BE FLUSH WITH EXISTING GRADE UNLESS NOTED OTHERWISE.
6. ALL NEW FRAME AND COVERS (WHERE REQUIRED) SHALL BE SOLID OR WATERTIGHT AS SPECIFIED BY THE ENGINEER.
7. FOR COVERS IN PAVED AREAS, FILL AROUND FRAME AND EXPOSED MANHOLE WALL COMPLETELY WITH ABC STONE. ABC STONE TO EXTEND TO EXISTING PAVEMENT - NEW PAVEMENT (MIN 2", MAX 8") TO BE INSTALLED FROM TOP OF ABC STONE TO TOP OF FRAME. THE COST FOR THE ABC STONE, ANCHOR BOLTS, AND PAVEMENT RESTORATION SHALL BE INCLUDED IN THE UNIT PRICES BID.
8. A STREET CUT PERMIT IS REQUIRED TO PERFORM EXCAVATION WORK IN CDOT ROADS. THE CONTRACTOR SHALL BE RESPONSIBLE FOR PROVIDING THE OWNER WITH THE REQUIRED INFORMATION ASSOCIATED WITH EACH STREET CUT IN ORDER TO PROPERLY OBTAIN A VALID STREET CUT PERMIT FROM CDOT. THE CONTRACTOR'S PROJECT MANAGER, SUPERINTENDENTS AND/OR FOREMEN MUST BE CERTIFIED BY CDOT TO PERFORM ANY EXCAVATION WORK IN CDOT ROADS. CDOT PROVIDES THE CERTIFICATION THROUGH PERIODIC CERTIFICATION COURSES. THE CONTRACTOR AND ALL SUBCONTRACTORS (AS NECESSARY) SHALL OBTAIN THE CERTIFICATION PRIOR TO PERFORMING ANY EXCAVATION IN CDOT ROADS.

2/6/2015
 W:\Transportation\Trl\036.00 (U-5008)\Utilities\perm\1\280_038_U5008.dgn
 Utilities

REV: 2/1/2012

CHARLOTTE-MECKLENBURG UTILITIES
 CHARLOTTE, NORTH CAROLINA

REHABILITATION OF MANHOLE FRAME
 AND COVER
 (PAGE 1 OF 2)

No.	Date	By	Revision	Scale	Approved By	DETAIL NO.
				NTS		H

CHARLOTTE-MECKLENBURG UTILITIES
 CHARLOTTE, NORTH CAROLINA

REHABILITATION OF MANHOLE FRAME
 AND COVER
 (PAGE 2 OF 2)

No.	Date	By	Revision	Scale	Approved By	DETAIL NO.
				NTS		H