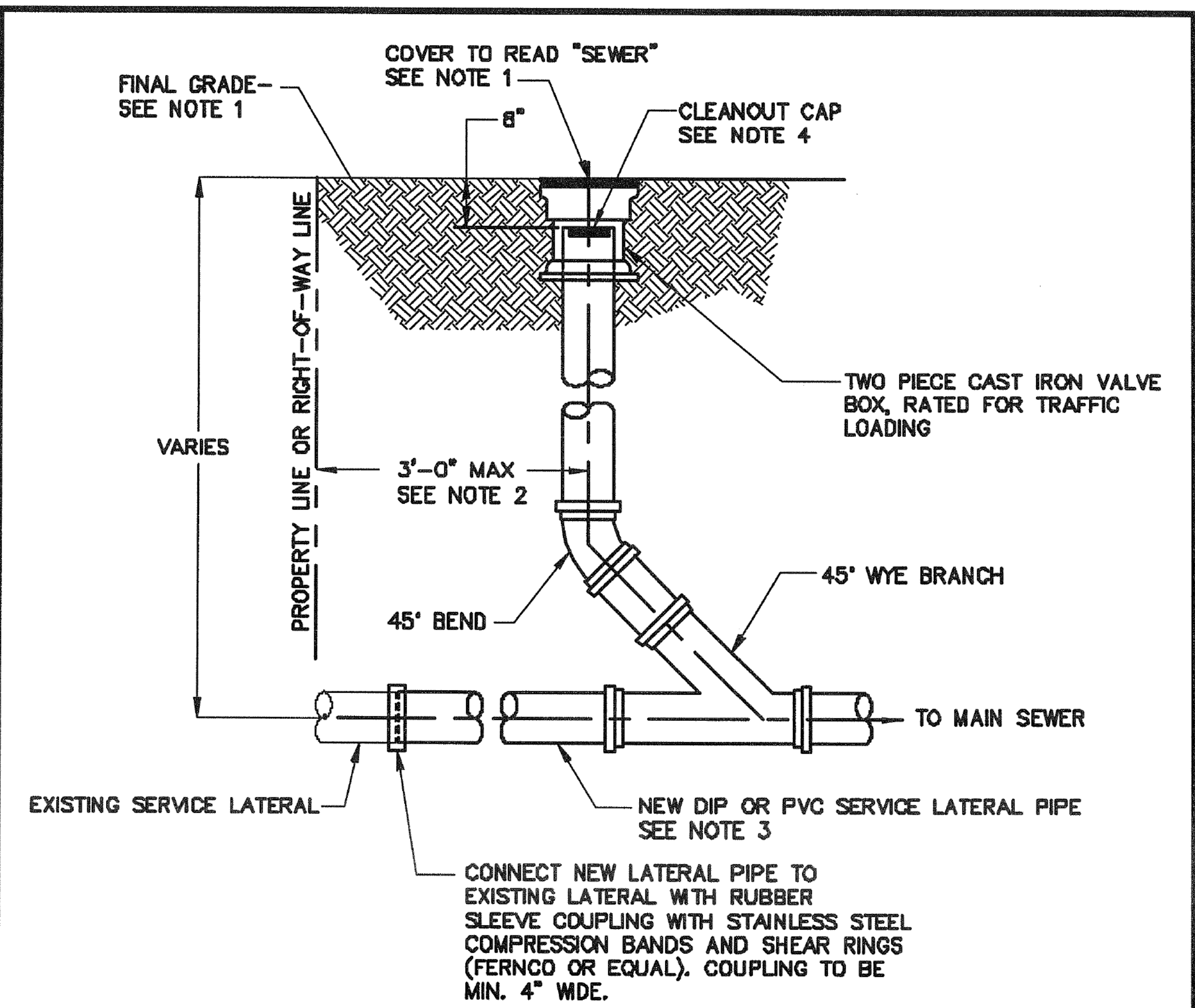


# CLTWater STANDARD DETAILS

**NOTES:**

1. REPLACE EXISTING SERVICE LATERALS WHERE SPECIFIED BY THE ENGINEER. REPLACEMENT TO INCLUDE THE TEE AND 6 FEET OF SERVICE LATERAL TO RECONNECT TO THE EXISTING LATERAL OR ADDITIONAL LATERAL TO INSTALL THE NEW LATERAL ALL THE WAY TO THE EDGE OF THE PROPERTY LINE OR ROAD R/W. INSTALL A CLEANOUT AT THE END OF THE NEW LATERAL PER DETAIL F WHEN DIRECTED BY THE ENGINEER. THE ENGINEER WILL DETERMINE WHICH SERVICES TO REPLACE FROM REVIEW OF TELEVISION INSPECTIONS.
2. INSTALL THE NEW SEWER AT A CONSTANT SLOPE BETWEEN THE TWO EXISTING PIPE ENDS.
3. INSTALL FITTINGS, ADAPTERS AND RUBBER SLEEVE COUPLINGS AS NECESSARY TO CONNECT NEW TEE AND SERVICE LATERAL. NEW SERVICE LATERALS SHALL BE DUCTILE IRON PIPE (DIP) OR PVC. NEW LATERALS AND TEE BRANCHES SHALL BE THE SAME SIZE AS THE EXISTING LATERAL.
4. NEW SERVICE LATERAL SHALL BE INSTALLED AT THE EXISTING LATERAL SLOPE AND IN THE EXISTING LATERAL LOCATION. CONNECT NEW LATERAL TO EXISTING LATERAL WITH RUBBER SLEEVE COUPLINGS WITH STAINLESS STEEL COMPRESSION BANDS AND SHEAR RINGS AS MANUFACTURED BY MISSION PRODUCTS OR APPROVED EQUAL. BYPASS FLOWS FROM THE LATERAL DURING CONSTRUCTION TO MAINTAIN SEWER SERVICE. DISPOSE OF EXISTING LATERAL PIPE MATERIAL OFFSITE.
5. INSTALL AND COMPACT #67 CRUSHED STONE TO A MIN OF 1 FOOT ABOVE THE TOP OF THE NEW SEWER PIPE, TEE, FITTINGS AND SERVICE LATERAL PIPES (COMPLETE TO CLEANOUT). IN PAVED AREAS, INSTALL AND COMPACT IMPORTED ABC STONE OR PIT GRAVEL FROM TOP OF STONE TO PAVEMENT SUBGRADE. PAYMENT FOR ABC STONE OR PIT GRAVEL SHALL BE BASED ON THE LENGTH OF POINT REPAIR. IN UNPAVED AREAS, INSTALL AND COMPACT COMMON FILL FROM TOP OF STONE TO FINISHED GRADE. RESTORE SURFACE TO MATCH EXISTING CONDITIONS.
6. TEES SHALL BE ROTATED 22 1/2 DEGREES PER CMUD STANDARDS. INSTALL FITTINGS AS NECESSARY TO RETURN THE NEW LATERAL TO THE EXISTING LATERAL ELEVATION. ALL TEES SHALL BE DUCTILE IRON.



**NOTES:**

1. CLEANOUT COVER TO BE FLUSH WITH THE FINAL GRADE. RESTORE SURFACE TO MATCH EXISTING CONDITIONS IN ACCORDANCE WITH CMUD STANDARD SPECIFICATIONS AND DETAILS.
2. LOCATION OF CLEANOUT SHALL BE AS DIRECTED BY ENGINEER.
3. NEW SERVICE LATERAL PIPE, CLEANOUT PIPING AND FITTINGS SHALL BE DUCTILE IRON PIPE (DIP) OR PVC. NEW SERVICE LATERALS SHALL BE INSTALLED TO MATCH THE EXISTING SLOPES AND CONFIGURATIONS UNLESS NOTED OTHERWISE. REFER TO DETAIL F.
4. CLEANOUT CAP SHALL BE PLASTIC GRIPPER PLUG, END OF PIPE MODEL, BY CHERNE INDUSTRIES OR APPROVED EQUAL.
5. FOR MEASUREMENT AND PAYMENT, CLEANOUT TO BEGIN AT WYE FITTING.

CHARLOTTE-MECKLENBURG UTILITIES CHARLOTTE, NORTH CAROLINA			
SERVICE LATERAL REPLACEMENT (PAGE 2 OF 2)			
No.	Date	By	Revision
NTS	Scale	Approved By	DETAIL NO. F

CHARLOTTE-MECKLENBURG UTILITIES CHARLOTTE, NORTH CAROLINA			
TYPICAL CLEANOUT			
No.	Date	By	Revision
NTS	Scale	Approved By	DETAIL NO. G