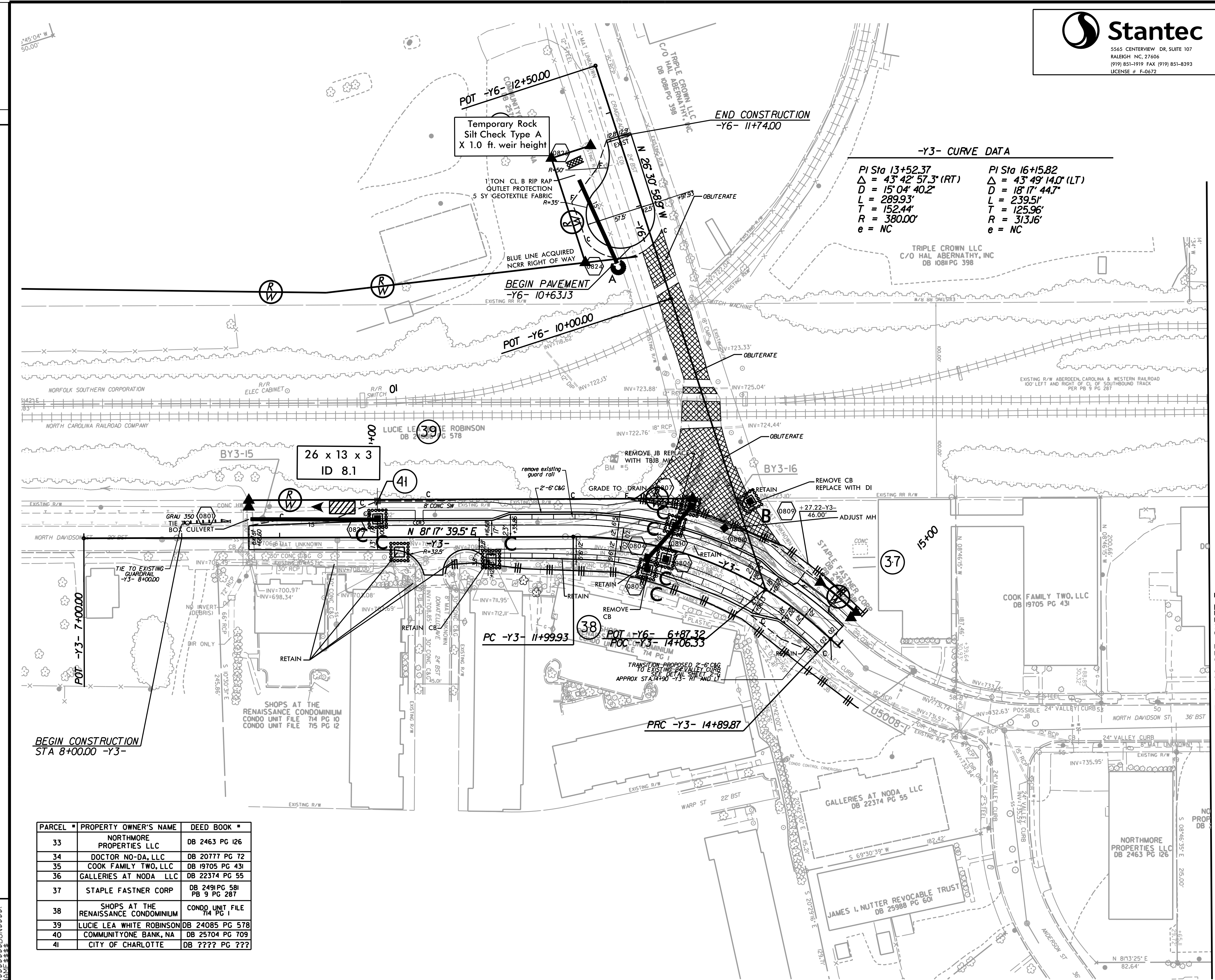
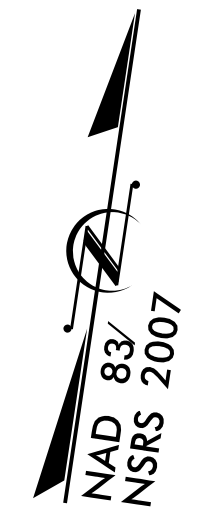


PROJECT REFERENCE NO. U-5008	SHEET NO. EC-13/CONST.B
RW SHEET NO.	
ROADWAY DESIGN ENGINEER	HYDRAULICS ENGINEER



-Y3- CURVE DATA

PI Sta 13+52.37	PI Sta 16+15.82
$\Delta = 43^\circ 42' 57.3''$ (RT)	$\Delta = 43^\circ 49' 14.0''$ (LT)
D = 15' 04' 40.2"	D = 18' 17' 44.7"
L = 289.93'	L = 239.51'
T = 152.44'	T = 125.96'
R = 380.00'	R = 313.16'
e = NC	e = NC



REVISIONS

PARCEL #	PROPERTY OWNER'S NAME	DEED BOOK #
33	NORTHMORE PROPERTIES LLC	DB 2463 PG 126
34	DOCTOR NO-DA, LLC	DB 20777 PG 72
35	COOK FAMILY TWO, LLC	DB 19705 PG 431
36	GALLERIES AT NODA, LLC	DB 22374 PG 55
37	STAPLE FASTNER CORP	DB 2491 PG 581 PB 9 PG 287
38	SHOPS AT THE RENAISSANCE CONDOMINIUM	CONDO UNIT FILE 714 PG 1
39	LUCIE LEA WHITE ROBINSON	DB 24085 PG 578
40	COMMUNITYONE BANK, NA	DB 25704 PG 709
41	CITY OF CHARLOTTE	DB ??? PG ???

MATCHLINE -Y3- STA 19+00 SEE SHEET 7

NOTE: SEE SHEET 10 FOR -Y3- PROFILE
 NOTE: SEE SHEET 12 FOR -Y6- PROFILE