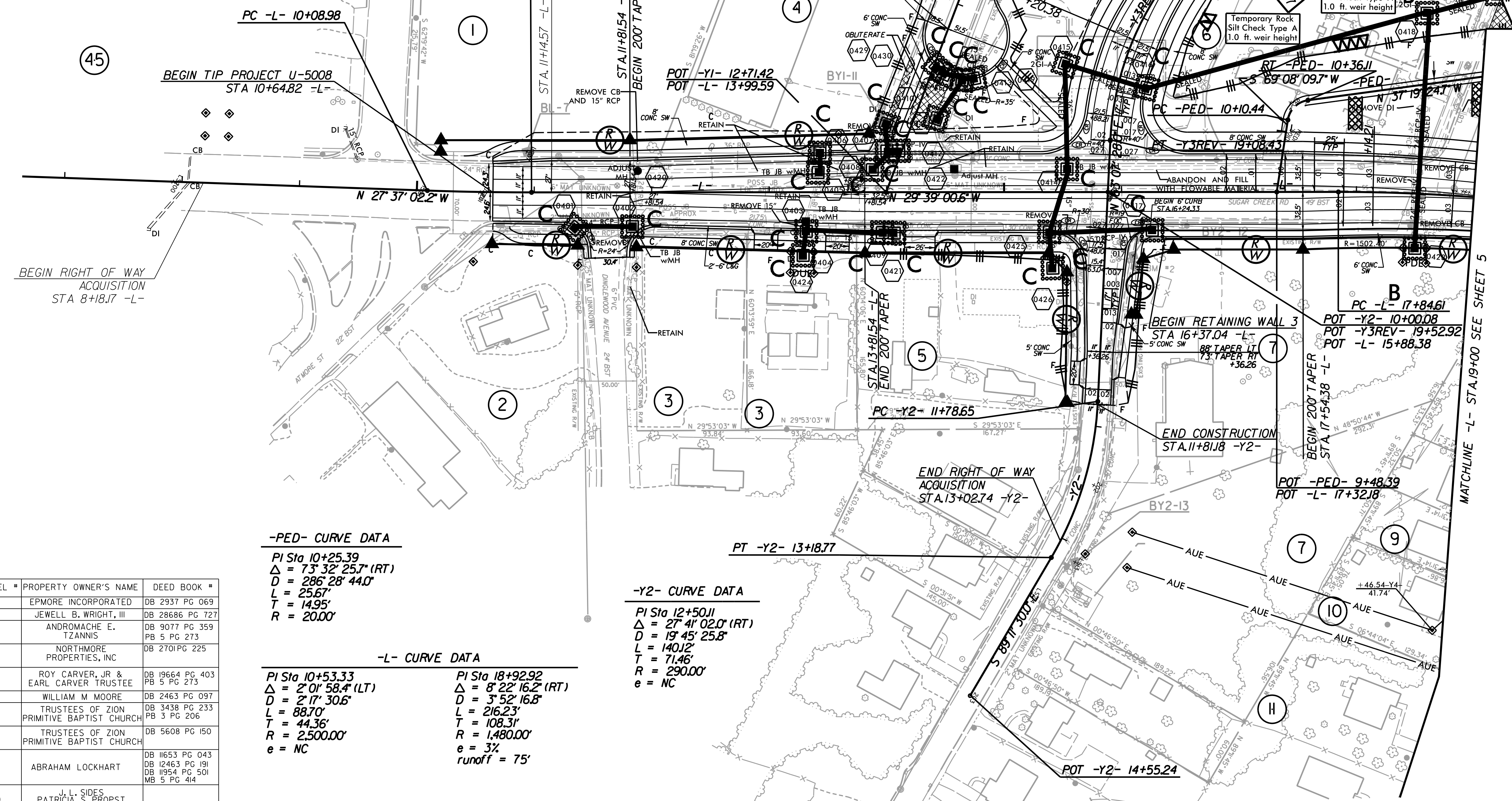
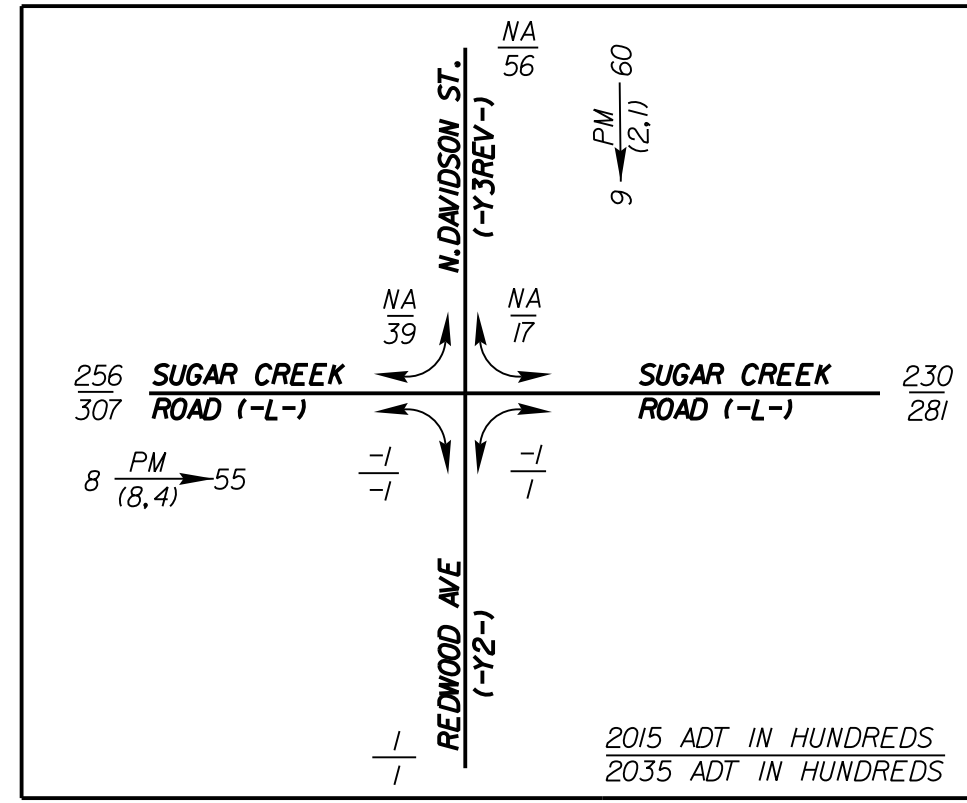




5565 CENTERVIEW DR, SUITE 107
 RALEIGH, NC, 27606
 (919) 851-1919 FAX (919) 851-8393
 LICENSE # F-0672

| | |
|--|----------------------------------|
| PROJECT REFERENCE NO. U-5008 | SHEET NO. EC-9/CONST.4 |
| R/W SHEET NO. | HYDRAULICS ENGINEER |
| ROADWAY DESIGN ENGINEER | |



-Y3REV- CURVE DATA
 PI Sta 17+69.91
 $\Delta = 78^\circ 51' 47.4" (LT)$
 $D = 22^\circ 55' 04.3"$
 $L = 344.1'$
 $T = 205.59'$
 $R = 250.0'$
 $e = NC$

-PED- CURVE DATA
 PI Sta 10+25.39
 $\Delta = 73^\circ 32' 25.7" (RT)$
 $D = 286^\circ 28' 44.0"$
 $L = 25.67'$
 $T = 14.95'$
 $R = 20.00'$

-Y2- CURVE DATA
 PI Sta 12+50.11
 $\Delta = 27^\circ 41' 02.0" (RT)$
 $D = 19^\circ 45' 25.8"$
 $L = 140.12'$
 $T = 71.46'$
 $R = 290.00'$
 $e = NC$

-L- CURVE DATA

| | |
|--|---|
| PI Sta 10+53.33 $\Delta = 2^\circ 01' 58.4" (LT)$ $D = 2^\circ 17' 30.6"$ $L = 88.70'$ $T = 44.36'$ $R = 2,500.00'$ $e = NC$ | PI Sta 18+92.92 $\Delta = 8^\circ 22' 16.2" (RT)$ $D = 3^\circ 52' 16.8"$ $L = 216.23'$ $T = 108.31'$ $R = 1,480.00'$ $e = 3\%$ $runoff = 75'$ |
|--|---|

| PARCEL # | PROPERTY OWNER'S NAME | DEED BOOK # |
|----------|---|--|
| 1 | EPMORE INCORPORATED | DB 2937 PG 069 |
| 2 | JEWELL B. WRIGHT, III | DB 28686 PG 727 |
| 3 | ANDROMACHE E. TZANNIS | DB 9077 PG 359 PB 5 PG 273 |
| 4 | NORTHMORE PROPERTIES, INC | DB 2701 PG 225 |
| 5 | ROY CARVER, JR & EARL CARVER TRUSTEE | DB 19664 PG 403 PB 5 PG 273 |
| 6 | WILLIAM M MOORE | DB 2463 PG 097 |
| 7 | TRUSTEES OF ZION PRIMITIVE BAPTIST CHURCH | DB 3438 PG 233 PB 3 PG 206 |
| 7 | TRUSTEES OF ZION PRIMITIVE BAPTIST CHURCH | DB 5608 PG 150 |
| 9 | ABRAHAM LOCKHART | DB 11653 PG 043 DB 12463 PG 191 DB 11954 PG 501 MB 5 PG 414 |
| 10 | J. L. SIDES PATRICIA S. PROPST | |
| 11 | PAUL SMITH RENEE BROWN SMITH | DB 9579 PG 502 |
| 45 | STERLING DEVELOPMENT COMPANY | DB 2937 PG 120 |

NOTE: SEE SHEET 9 FOR -L- PROFILE
 NOTE: SEE SHEET 10 FOR -Y1- & -Y2- PROFILE
 NOTE: SEE SHEET 11 FOR -Y3REV- PROFILE
 NOTE: SEE SHEET 12 FOR -PED- PROFILE