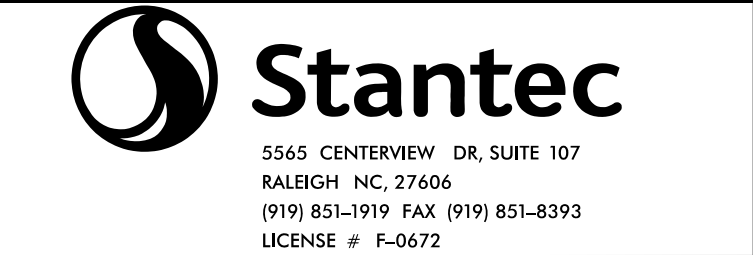


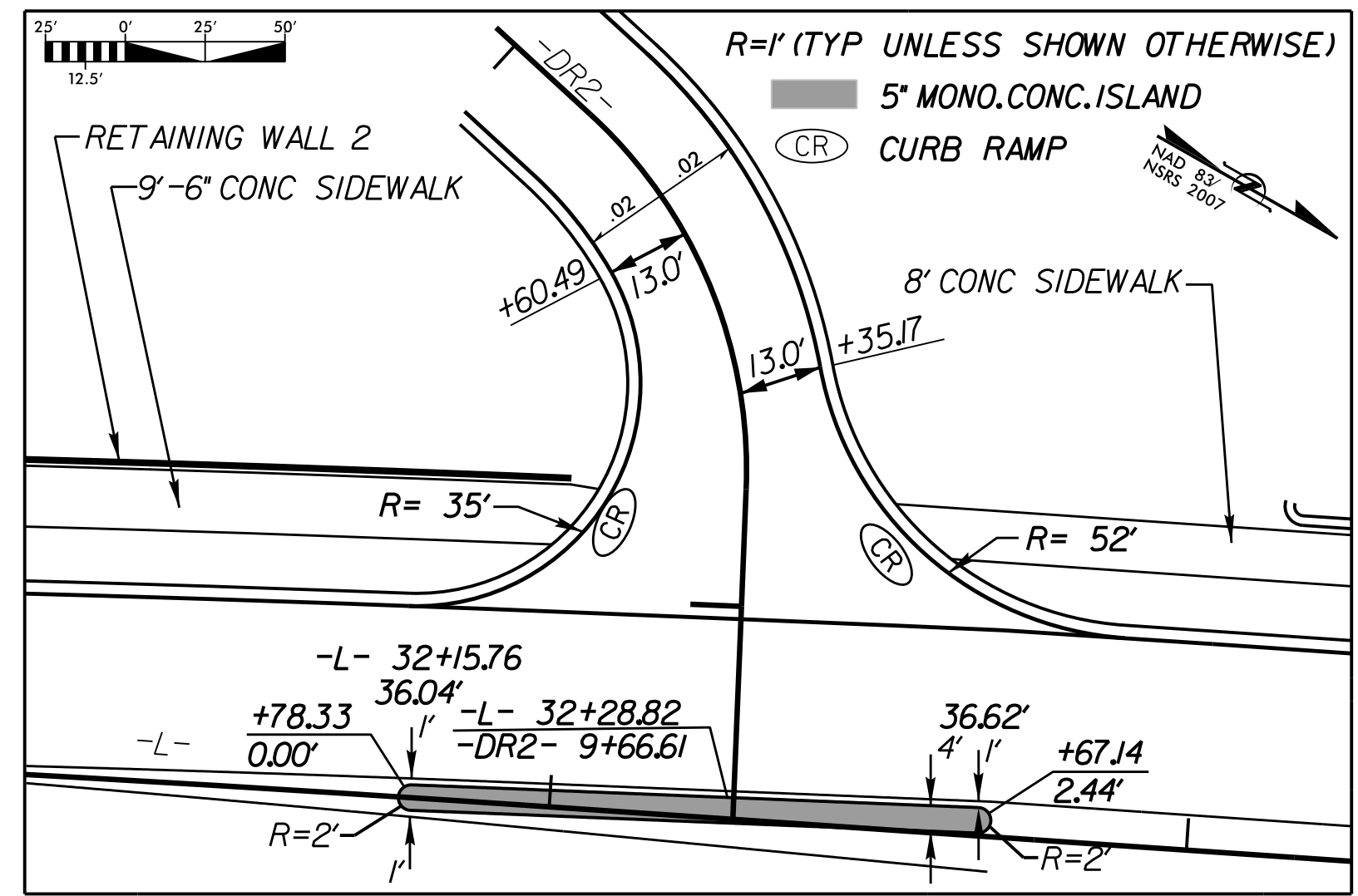
0400DEL-P30

PARCEL #	PROPERTY OWNER'S NAME	DEED BOOK #
20	ARK PROMOTIONS, INC C/O ARK VENTURES, INC	DB 23915 PG 719
21	HELEN DORTON, LLC	DB 10482 PG 789
22	STAR MOUNTAIN PROPERTIES	DB 20685 PG 769
23	AJP MECKLENBURG, LLC	DB 24519 PG 504 DB 25107 PG 028
24	VIET-MY CORPORATION	DB 16755 PG 902 DB 16755 PG 906
25	VASILIOS K. BELIGRINIS, et al	DB 5547 PG 573

PARCEL #	PROPERTY OWNER'S NAME	DEED BOOK #
26	METROMONT PRESTRESS COMPANY	DB 9426 PG 410
27	ECONOMY TRANSPORT GROUP, INC	DB 16914 PG 809 DB 14829 PG 237
28	JOAL CORP	DB 7059 PG 202
29	CONCRETE SUPPLY COMPANY	DB 8485 PG 827

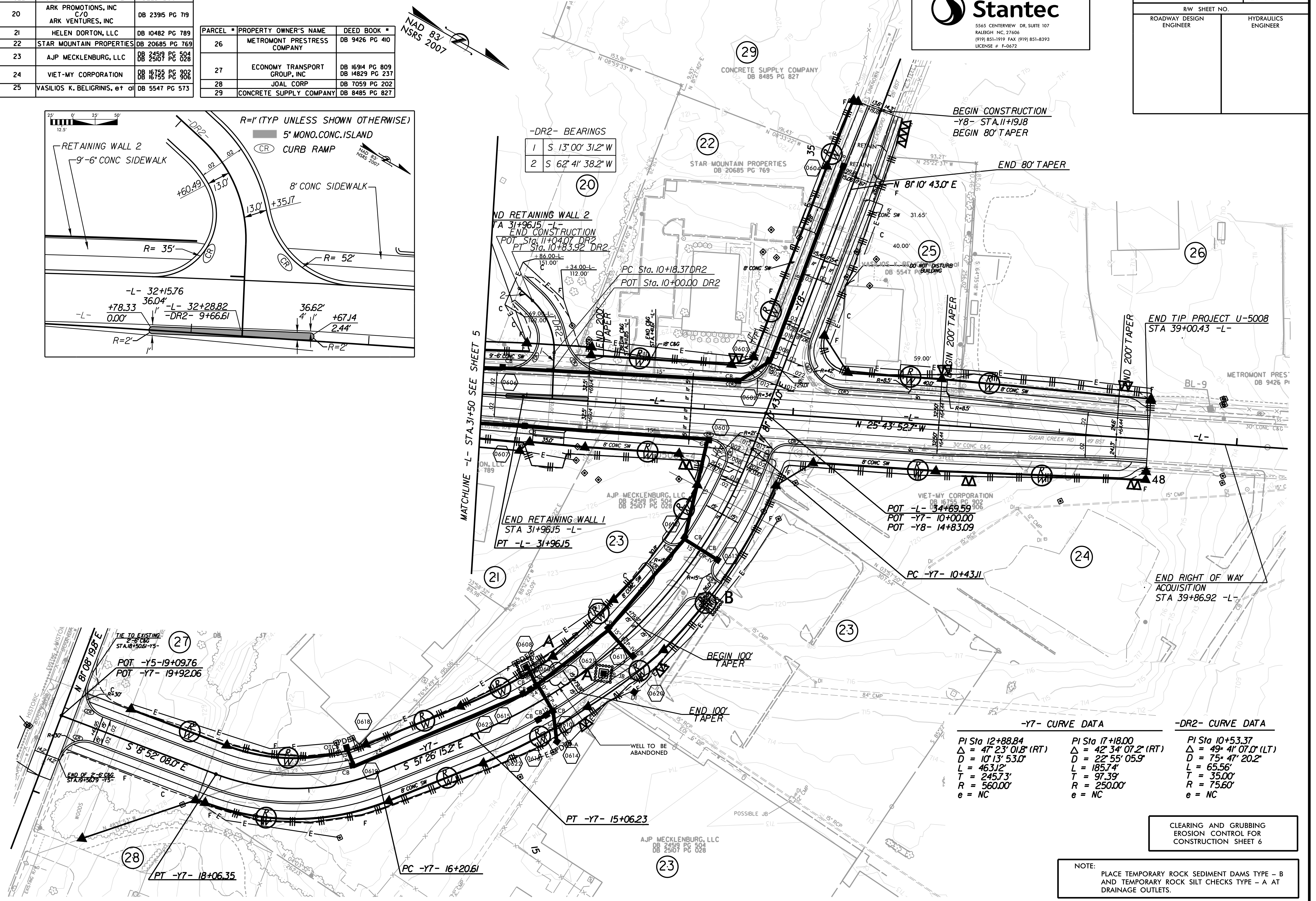


PROJECT REFERENCE NO. U-5008	SHEET NO. EC-6/CONST.6
R/W SHEET NO.	HYDRAULICS ENGINEER
ROADWAY DESIGN ENGINEER	



-DR2- BEARINGS

1	S 13° 00' 31.2" W
2	S 62° 41' 38.2" W



-Y7- CURVE DATA		-DR2- CURVE DATA	
PI Sta 12+88.84	$\Delta = 47^\circ 23' 01.8" (RT)$	PI Sta 17+18.00	$\Delta = 42^\circ 34' 07.2" (RT)$
D = 10' 13' 53.0"	L = 463.12'	D = 22' 55' 05.9"	L = 185.74'
T = 245.73'	R = 560.00'	T = 97.39'	R = 250.00'
e = NC		e = NC	

CLEARING AND GRUBBING
EROSION CONTROL FOR
CONSTRUCTION SHEET 6

NOTE:
PLACE TEMPORARY ROCK SEDIMENT DAMS TYPE - B
AND TEMPORARY ROCK SILT CHECKS TYPE - A AT
DRAINAGE OUTLETS.

REVISIONS

SYSTEMS
CIVIL
ELECTRICAL
MECHANICAL
PLUMBING
STRUCTURAL