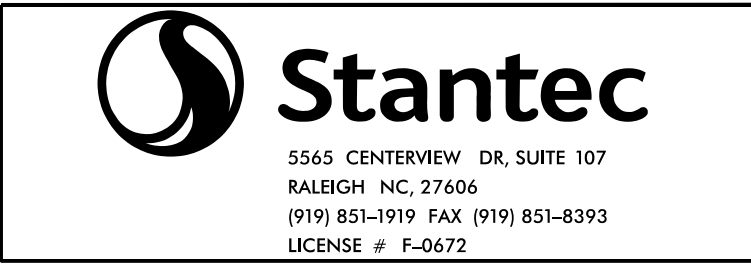


0400DEL-P30

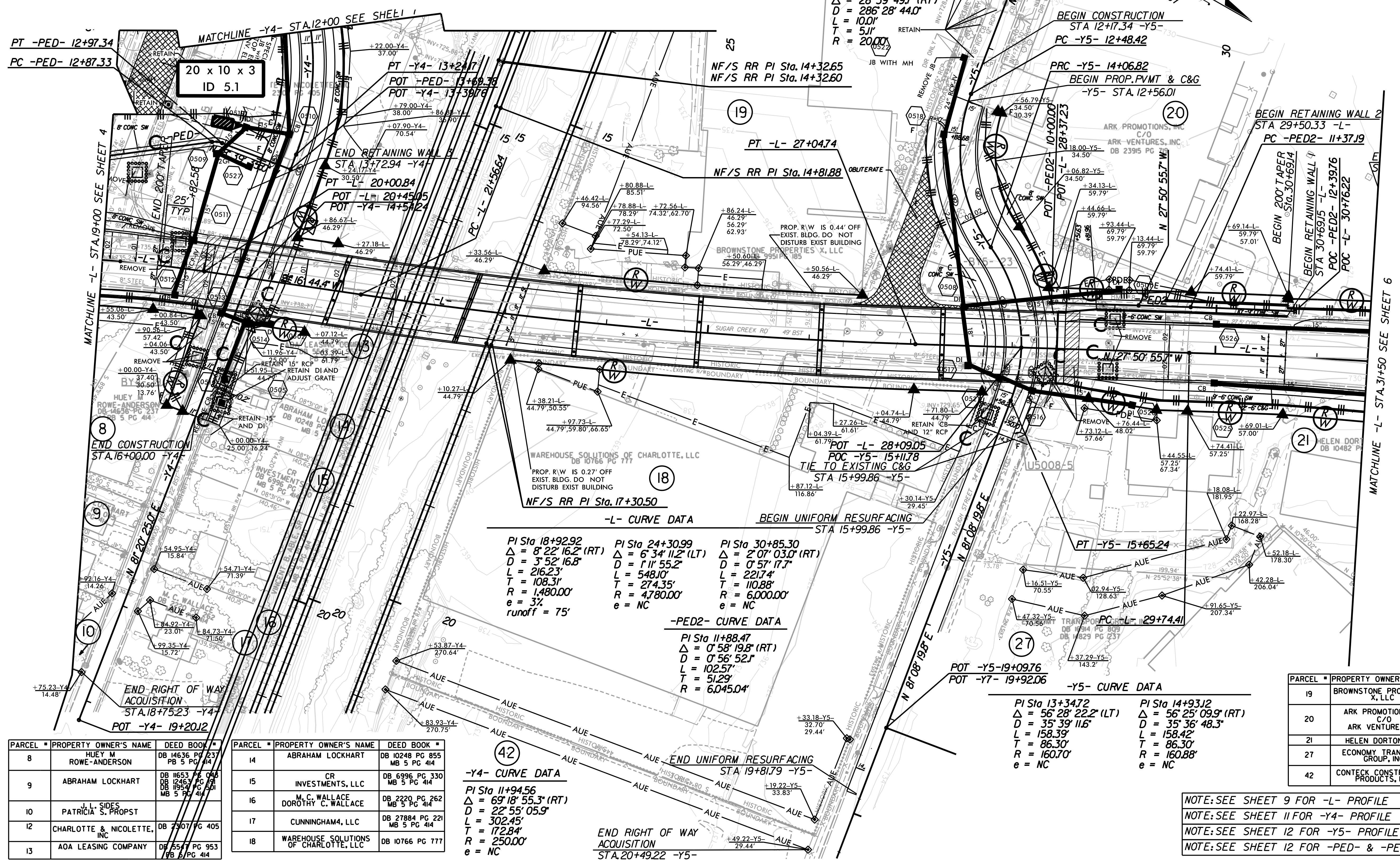
NOTE: PLACE TEMPORARY ROCK SEDIMENT DAMS TYPE - B AND TEMPORARY ROCK SILT CHECKS TYPE - A AT DRAINAGE OUTLETS.

CLEARING AND GRUBBING EROSION CONTROL FOR CONSTRUCTION SHEET 5



BEGIN RIGHT OF WAY ACQUISITION STA. 9+74.30 -Y5-
POT -Y5- 10+00.00

PROJECT REFERENCE NO.	SHEET NO.
U-5008	EC-5/CONST.5
R/W SHEET NO.	HYDRAULICS ENGINEER
ROADWAY DESIGN ENGINEER	



-PED- CURVE DATA
 PI Sta 12+92.44
 $\Delta = 28^\circ 39' 49.7''$ (RT)
 $D = 286' 28'' 44.0''$
 $L = 100.0'$
 $T = 51.1'$
 $R = 2000.0'$

-L- CURVE DATA

PI Sta 18+92.92 $\Delta = 8^\circ 22' 16.2''$ (RT) $D = 3^\circ 52' 16.8''$ $L = 216.23'$ $T = 108.31'$ $R = 1,480.00'$ $e = 3\%$ runoff = 75'	PI Sta 24+30.99 $\Delta = 6^\circ 34' 11.2''$ (LT) $D = 1^\circ 11' 55.2''$ $L = 548.10'$ $T = 274.35'$ $R = 4,780.00'$ $e = NC$	PI Sta 30+85.30 $\Delta = 2^\circ 07' 03.0''$ (RT) $D = 0^\circ 57' 17.7''$ $L = 221.74'$ $T = 110.88'$ $R = 6,000.00'$ $e = NC$
---	--	--

-PED2- CURVE DATA
 PI Sta 11+88.47
 $\Delta = 0^\circ 58' 19.8''$ (RT)
 $D = 0^\circ 56' 52.1''$
 $L = 102.57'$
 $T = 51.29'$
 $R = 6,045.04'$

-Y5- CURVE DATA

PI Sta 13+34.72 $\Delta = 56^\circ 28' 22.2''$ (LT) $D = 35^\circ 39' 11.6''$ $L = 158.39'$ $T = 86.30'$ $R = 160.70'$ $e = NC$	PI Sta 14+93.12 $\Delta = 56^\circ 25' 09.9''$ (RT) $D = 35^\circ 36' 48.3''$ $L = 158.42'$ $T = 86.30'$ $R = 160.88'$ $e = NC$
---	---

-Y4- CURVE DATA
 PI Sta 11+94.56
 $\Delta = 69^\circ 18' 55.3''$ (RT)
 $D = 22^\circ 55' 05.9''$
 $L = 302.45'$
 $T = 172.84'$
 $R = 250.00'$
 $e = NC$

PARCEL #	PROPERTY OWNER'S NAME	DEED BOOK #
8	HUEY M ROWE-ANDERSON	DB 14636 PG 237 PB 5 PG 414
9	ABRAHAM LOCKHART	DB 11653 PG 046 DB 12463 PG 891 MB 5 PG 414
10	J. L. SIDES PATRICIA S. PROPST	DB 11954 PG 501 MB 5 PG 414
12	CHARLOTTE & NICOLETTE, INC	DB 27017 PG 405
13	AOA LEASING COMPANY	DB 5547 PG 953 PB 5 PG 414

PARCEL #	PROPERTY OWNER'S NAME	DEED BOOK #
14	ABRAHAM LOCKHART	DB 10248 PG 855 MB 5 PG 414
15	CR INVESTMENTS, LLC	DB 6996 PG 330 MB 5 PG 414
16	M. C. WALLACE DOROTHY C. WALLACE	DB 2220 PG 262 MB 5 PG 414
17	CUNNINGHAM4, LLC	DB 27884 PG 221 MB 5 PG 414
18	WAREHOUSE SOLUTIONS OF CHARLOTTE, LLC	DB 10766 PG 777

PARCEL #	PROPERTY OWNER'S NAME	DEED BOOK #
19	BROWNSTONE PROPERTIES X, LLC	DB 9951 PG 185
20	ARK PROMOTIONS, INC C/O ARK VENTURES, INC	DB 23915 PG 719
21	HELEN DORTON, LLC	DB 10482 PG 789
27	ECONOMY TRANSPORT GROUP, INC	DB 16914 PG 809 DB 14829 PG 237
42	CONTECK CONSTRUCTION PRODUCTS, INC	DB 8531 PG 814

NOTE: SEE SHEET 9 FOR -L- PROFILE
 NOTE: SEE SHEET 11 FOR -Y4- PROFILE
 NOTE: SEE SHEET 12 FOR -Y5- PROFILE
 NOTE: SEE SHEET 12 FOR -PED- & -PED2- PROFILE

REVISIONS

0400DEL-P30