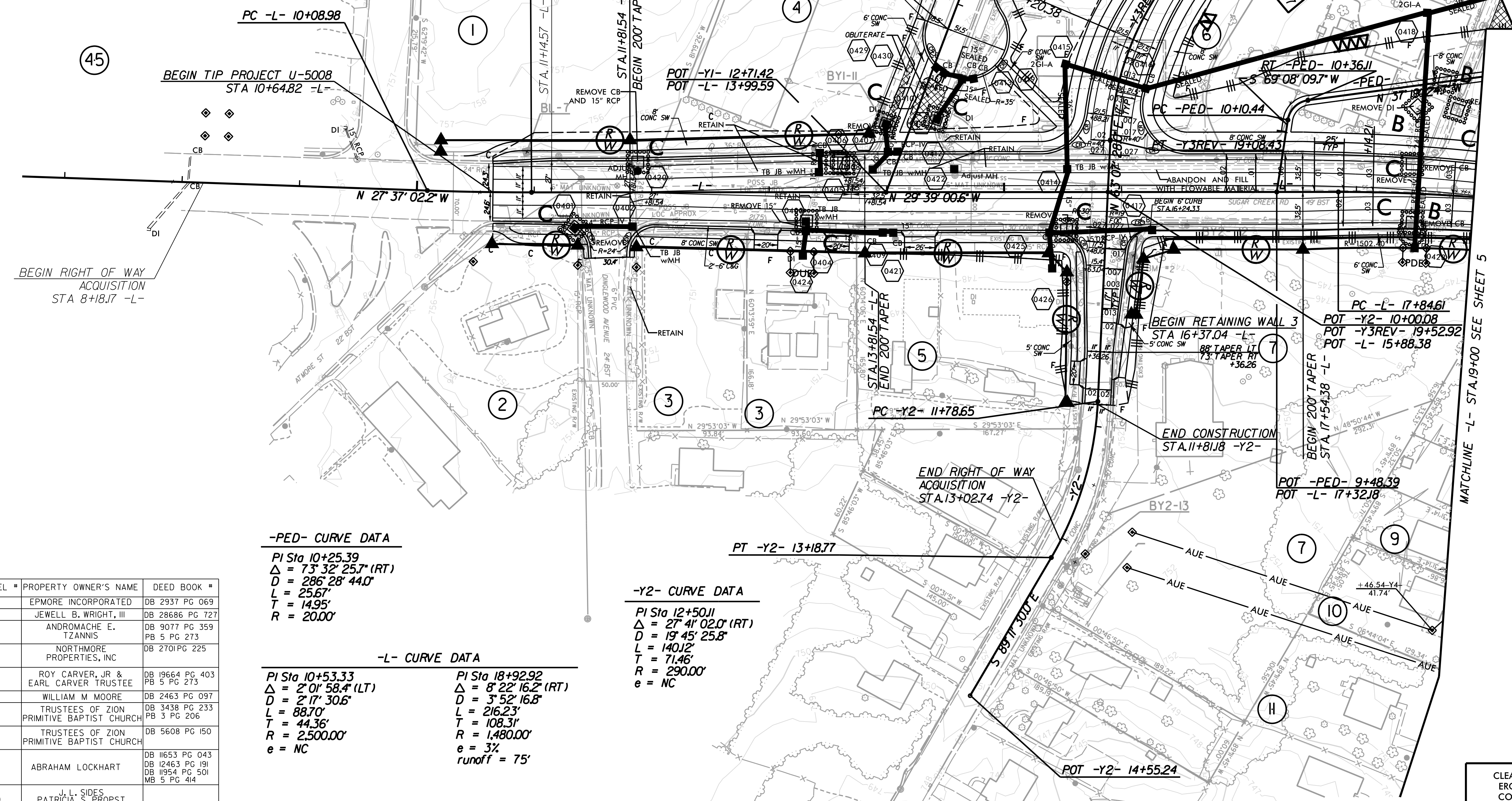
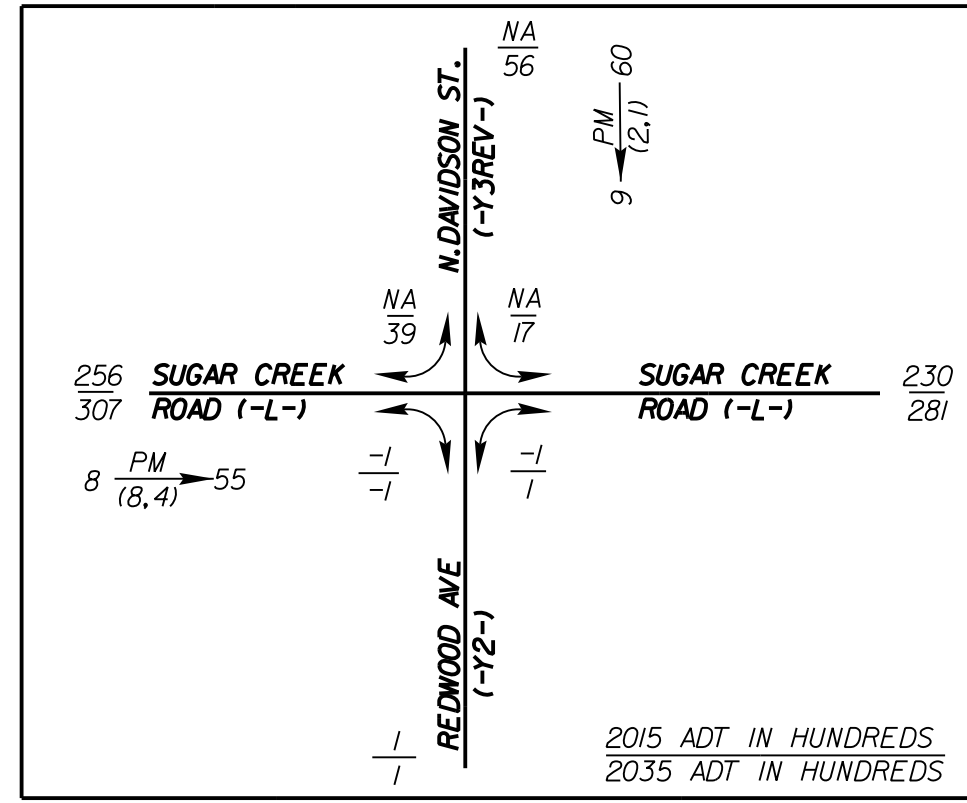




5565 CENTERVIEW DR, SUITE 107  
 RALEIGH, NC, 27606  
 (919) 851-1919 FAX (919) 851-8393  
 LICENSE # F-0672

PROJECT REFERENCE NO. U-5008	SHEET NO. EC-4/CONST.4
ROADWAY DESIGN ENGINEER	HYDRAULICS ENGINEER



**-Y3REV- CURVE DATA**  
 PI Sta 17+69.91  
 $\Delta = 78^{\circ} 51' 47.4''$  (LT)  
 $D = 22^{\circ} 55' 04.3''$   
 $L = 344.11'$   
 $T = 205.59'$   
 $R = 250.01'$   
 $e = NC$

**-PED- CURVE DATA**  
 PI Sta 10+25.39  
 $\Delta = 73^{\circ} 32' 25.7''$  (RT)  
 $D = 286^{\circ} 28' 44.0''$   
 $L = 25.67'$   
 $T = 14.95'$   
 $R = 20.00'$

**-Y2- CURVE DATA**  
 PI Sta 12+50.11  
 $\Delta = 27^{\circ} 41' 02.0''$  (RT)  
 $D = 19^{\circ} 45' 25.8''$   
 $L = 140.12'$   
 $T = 71.46'$   
 $R = 290.00'$   
 $e = NC$

**-L- CURVE DATA**

PI Sta 10+53.33 $\Delta = 2^{\circ} 01' 58.4''$ (LT) $D = 2^{\circ} 17' 30.6''$ $L = 88.70'$ $T = 44.36'$ $R = 2,500.00'$ $e = NC$	PI Sta 18+92.92 $\Delta = 8^{\circ} 22' 16.2''$ (RT) $D = 3^{\circ} 52' 16.8''$ $L = 216.23'$ $T = 108.31'$ $R = 1,480.00'$ $e = 3\%$ $runoff = 75'$
--	---

PARCEL #	PROPERTY OWNER'S NAME	DEED BOOK #
1	EPMORE INCORPORATED	DB 2937 PG 069
2	JEWELL B. WRIGHT, III	DB 28686 PG 727
3	ANDROMACHE E. TZANNIS	DB 9077 PG 359 PB 5 PG 273
4	NORTHMORE PROPERTIES, INC	DB 2701 PG 225
5	ROY CARVER, JR & EARL CARVER TRUSTEE	DB 19664 PG 403 PB 5 PG 273
6	WILLIAM M MOORE	DB 2463 PG 097
7	TRUSTEES OF ZION PRIMITIVE BAPTIST CHURCH	DB 3438 PG 233 PB 3 PG 206
7	TRUSTEES OF ZION PRIMITIVE BAPTIST CHURCH	DB 5608 PG 150
9	ABRAHAM LOCKHART	DB 11653 PG 043 DB 12463 PG 191 DB 11954 PG 501 MB 5 PG 414
10	J. L. SIDES PATRICIA S. PROPST	DB 9579 PG 502
45	STERLING DEVELOPMENT COMPANY	DB 2937 PG 120

CLEARING AND GRUBBING  
 EROSION CONTROL FOR  
 CONSTRUCTION SHEET 4

NOTE:  
 PLACE TEMPORARY ROCK SEDIMENT DAMS TYPE - B  
 AND TEMPORARY ROCK SILT CHECKS TYPE - A AT  
 DRAINAGE OUTLETS.