

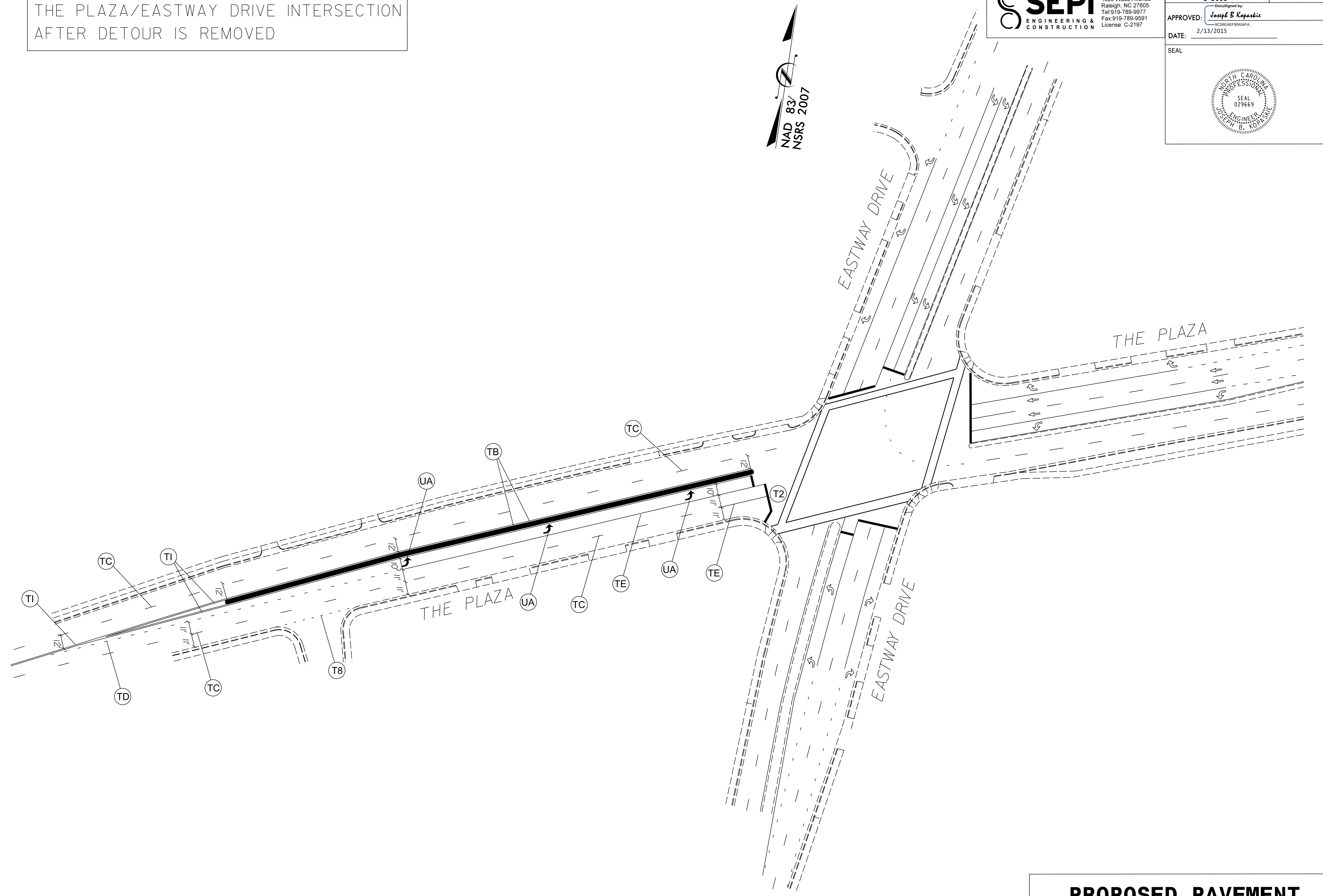
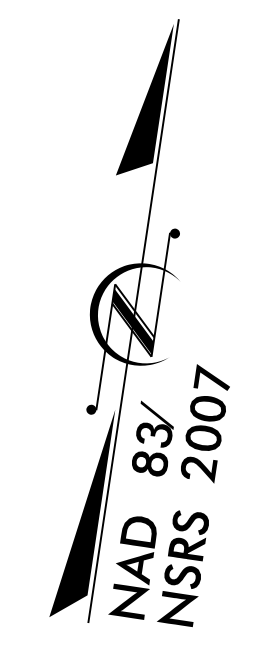
0400DEL\_P30

THE PLAZA/EASTWAY DRIVE INTERSECTION  
AFTER DETOUR IS REMOVED

**SEPI**  
ENGINEERING &  
CONSTRUCTION

1025 Wade Avenue  
Raleigh, NC 27605  
Tel: 919-789-9977  
Fax: 919-789-9591  
License: C-2197

TIP NO.	SHEET NO.
U-5008	PMP-9
APPROVED: <u>Joseph B. Kopaschie</u> SC09EA0444	
DATE: 2/13/2015	
SEAL	



**PROPOSED PAVEMENT  
MARKING DETAIL**

SYSTEMS DESIGN  
DESIGNED BY: JRM  
DRAWN BY: JRM  
CHECKED BY: JRM  
DATE: 2/13/2015