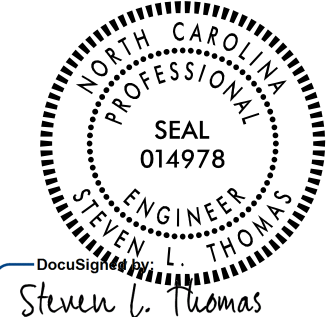
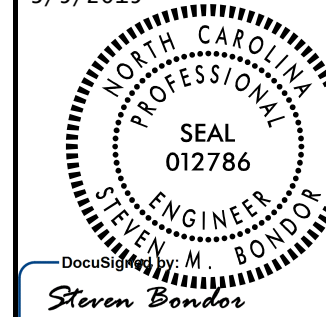


0400DEL_P30

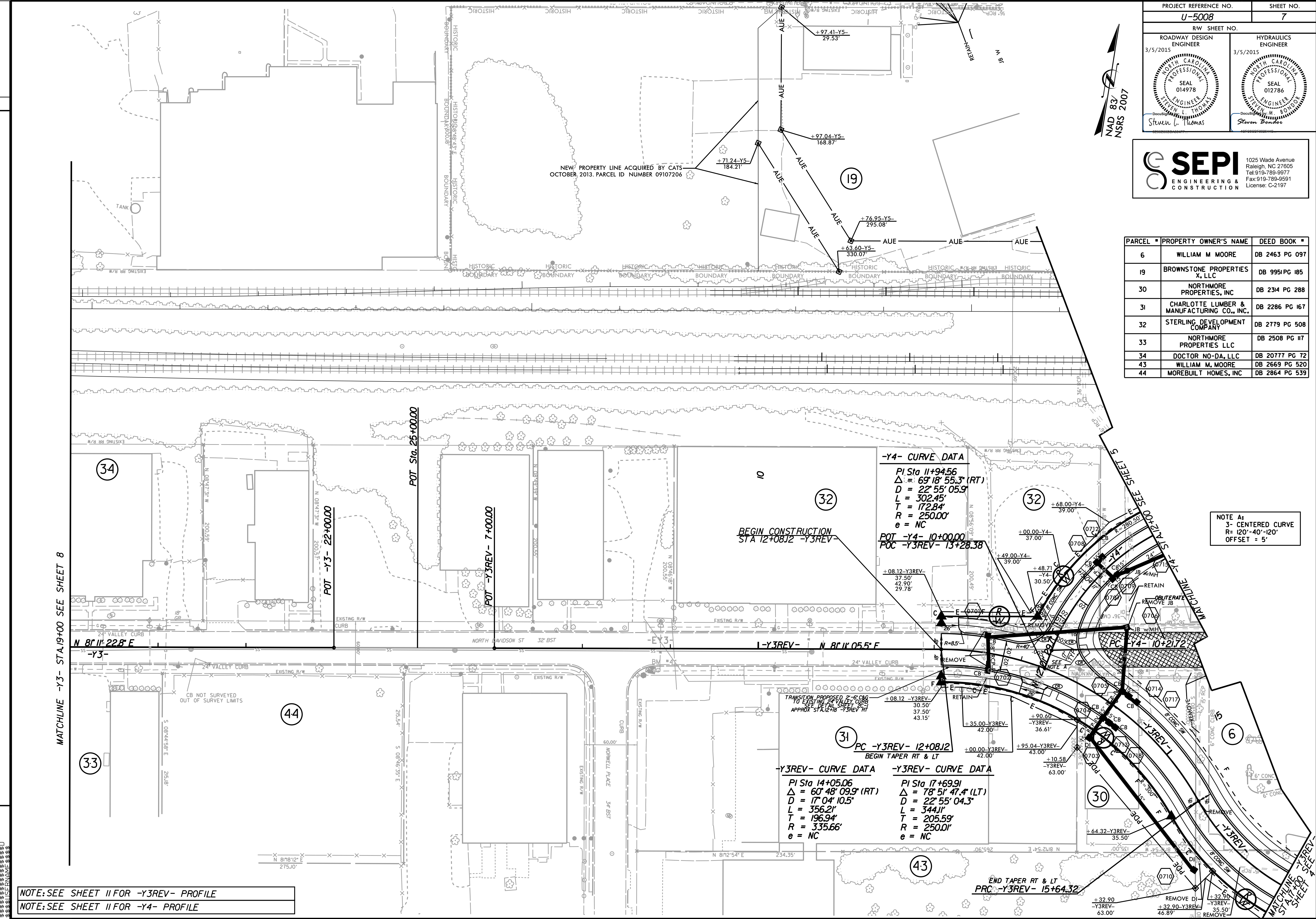
REVISIONS

PROJECT REFERENCE NO. U-5008	SHEET NO. 7
R/W SHEET NO. ROADWAY DESIGN ENGINEER 3/5/2015	HYDRAULICS ENGINEER 3/5/2015
	
Steven L. Thomas	Steven Bonder

SEPI
ENGINEERING & CONSTRUCTION

1025 Wade Avenue
Raleigh, NC 27605
Tel: 919-789-9977
Fax: 919-789-9591
License: C-2197

PARCEL #	PROPERTY OWNER'S NAME	DEED BOOK #
6	WILLIAM M MOORE	DB 2463 PG 097
19	BROWNSTONE PROPERTIES X, LLC	DB 9951 PG 185
30	NORTHMORE PROPERTIES, INC	DB 2314 PG 288
31	CHARLOTTE LUMBER & MANUFACTURING CO., INC.	DB 2286 PG 167
32	STERLING DEVELOPMENT COMPANY	DB 2779 PG 508
33	NORTHMORE PROPERTIES LLC	DB 2508 PG 117
34	DOCTOR NO-DA, LLC	DB 20777 PG 72
43	WILLIAM M. MOORE	DB 2669 PG 520
44	MOREBUILT HOMES, INC	DB 2864 PG 539



NOTE: SEE SHEET 11 FOR -Y3REV- PROFILE
 NOTE: SEE SHEET 11 FOR -Y4- PROFILE

MATCHLINE -Y3- STA. 19+40.00 SEE SHEET 8

MATCHLINE -Y4- STA. 12+00.00 SEE SHEET 5

MATCHLINE -Y3REV- STA. 15+00.00 SEE SHEET 4

SYNTHETIC
 1/2" = 100'
 1/4" = 50'
 1/8" = 25'