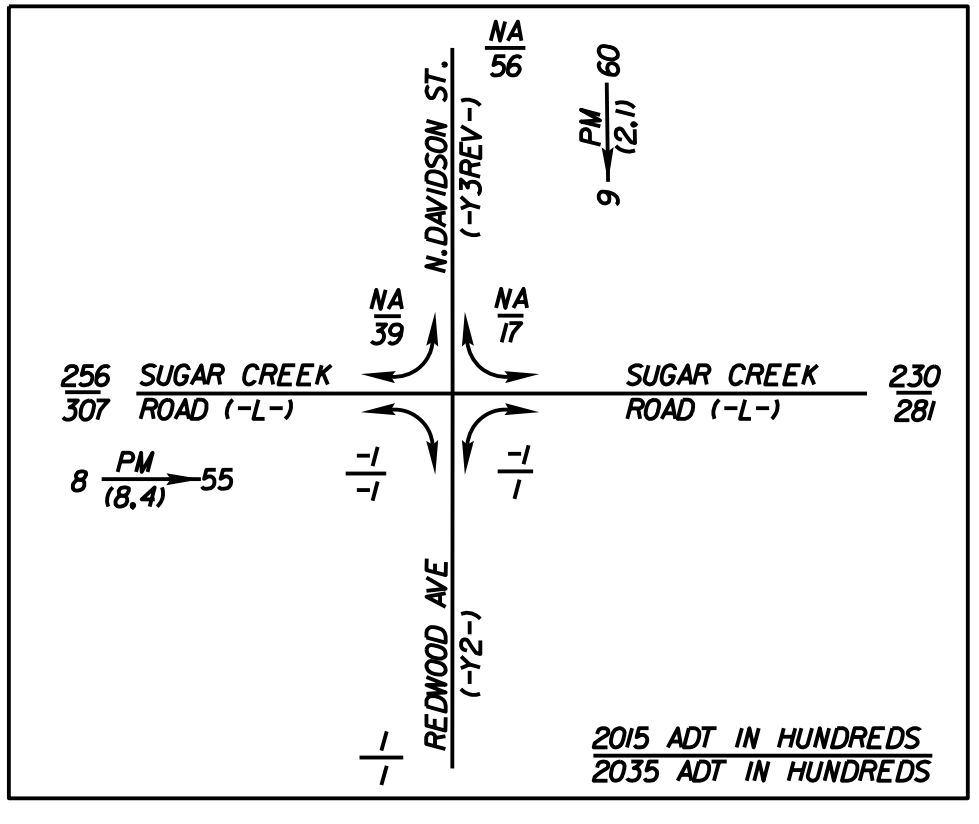


0400DEL_P30



-Y3REV- CURVE DATA
PI Sta 17+69.91
 $\Delta = 78^\circ 51' 47.4" (LT)$
 $D = 22^\circ 55' 04.3"$
 $L = 344.1'$
 $T = 205.59'$
 $R = 250.0'$
 $e = NC$

-PED- CURVE DATA
PI Sta 10+25.39
 $\Delta = 73^\circ 32' 25.7" (RT)$
 $D = 286^\circ 28' 44.0"$
 $L = 25.67'$
 $T = 14.95'$
 $R = 20.00'$

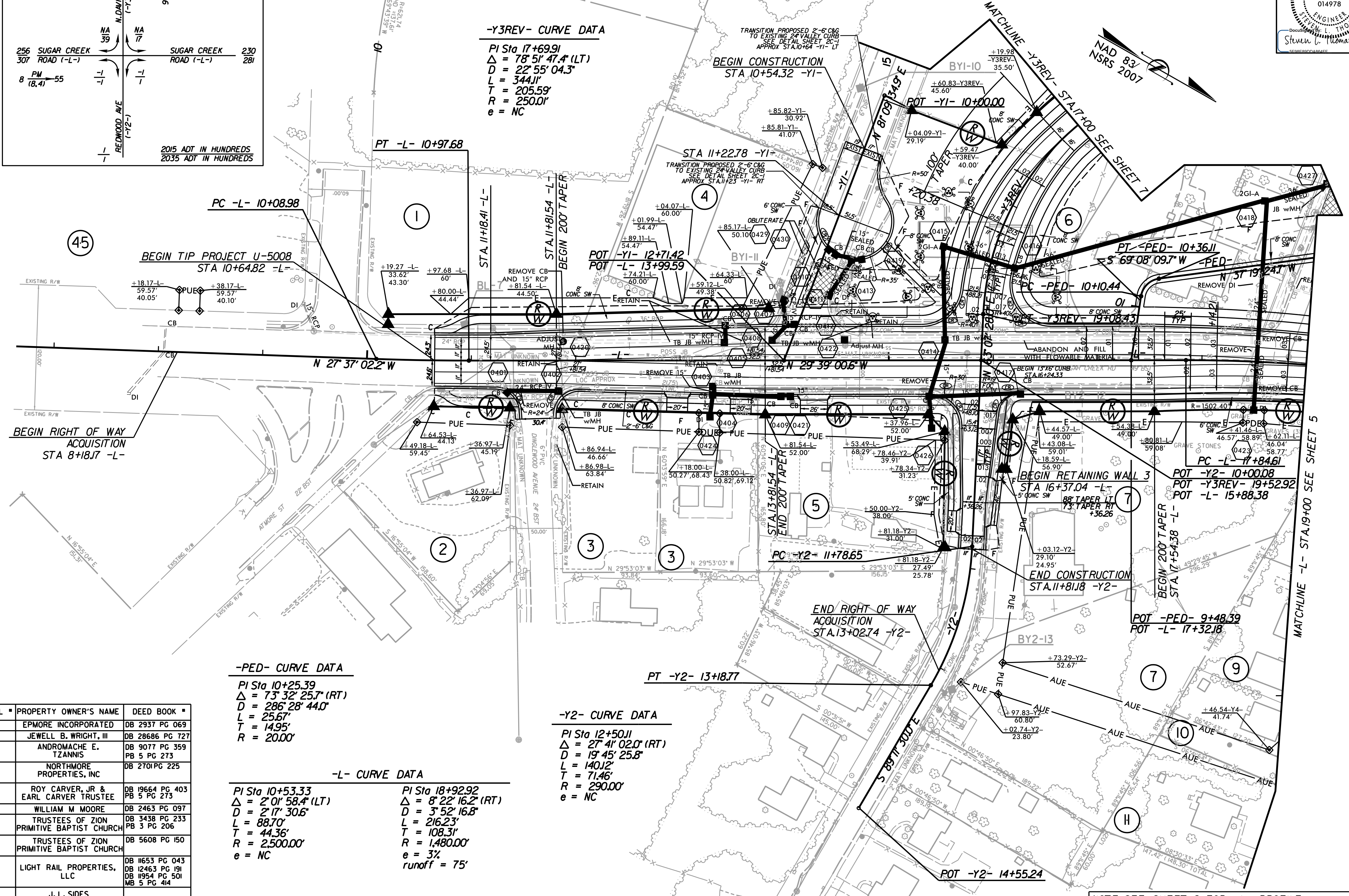
-Y2- CURVE DATA
PI Sta 12+50.11
 $\Delta = 27^\circ 41' 02.0" (RT)$
 $D = 19^\circ 45' 25.8"$
 $L = 140.12'$
 $T = 71.46'$
 $R = 290.00'$
 $e = NC$

-L- CURVE DATA

PI Sta 10+53.33 $\Delta = 2^\circ 01' 58.4" (LT)$ $D = 3^\circ 52' 16.8"$ $L = 88.70'$ $T = 44.36'$ $R = 2,500.00'$ $e = NC$	PI Sta 18+92.92 $\Delta = 8^\circ 22' 16.2" (RT)$ $D = 3^\circ 52' 16.8"$ $L = 216.23'$ $T = 108.31'$ $R = 1,480.00'$ $e = 3\%$ $runoff = 75'$
------------------------------------------------------------------------------------------------------------------------------------------------	---------------------------------------------------------------------------------------------------------------------------------------------------------------------

PARCEL #	PROPERTY OWNER'S NAME	DEED BOOK #
1	EPMORE INCORPORATED	DB 2937 PG 069
2	JEWELL B. WRIGHT, III	DB 28686 PG T27
3	ANDROMACHE E. TZANNIS	DB 9077 PG 359 PB 5 PG 273
4	NORTHMORE PROPERTIES, INC	DB 2701 PG 225
5	ROY CARVER, JR & EARL CARVER TRUSTEE	DB 19664 PG 403 PB 5 PG 273
6	WILLIAM M MOORE	DB 2463 PG 097
7	TRUSTEES OF ZION PRIMITIVE BAPTIST CHURCH	DB 3438 PG 233 PB 3 PG 206
7	TRUSTEES OF ZION PRIMITIVE BAPTIST CHURCH	DB 5608 PG 150
9	LIGHT RAIL PROPERTIES, LLC	DB 11653 PG 043 DB 12463 PG 191 DB 11954 PG 501 MB 5 PG 414
10	J. L. SIDES PATRICIA S. PROPST	DB 9579 PG 502
11	PAUL SMITH RENEE BROWN SMITH	DB 9579 PG 502
45	STERLING DEVELOPMENT COMPANY	DB 2937 PG 120

REVISIONS



NOTE: SEE SHEET 9 FOR -L- PROFILE
NOTE: SEE SHEET 10 FOR -Y1- & -Y2- PROFILE
NOTE: SEE SHEET 11 FOR -Y3REV- PROFILE
NOTE: SEE SHEET 12 FOR -PED- PROFILE
NOTE: SEE SHEET ECS-1 THRU ECS-3 FOR ELECTRICAL CONDUIT SYSTEM
NOTE: SEE SHEET WALL-1 THRU WALL-19 FOR WALL PLANS