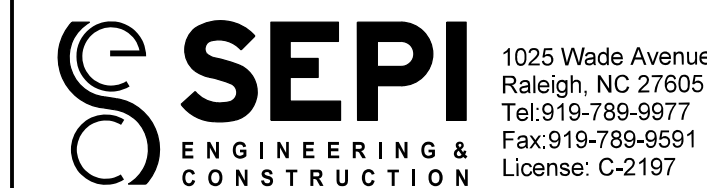


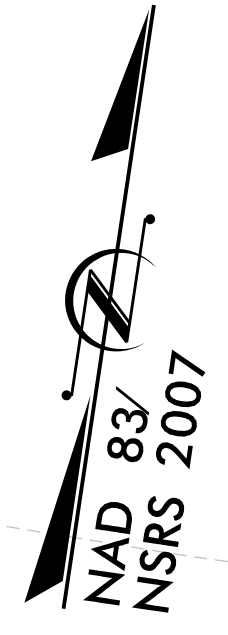
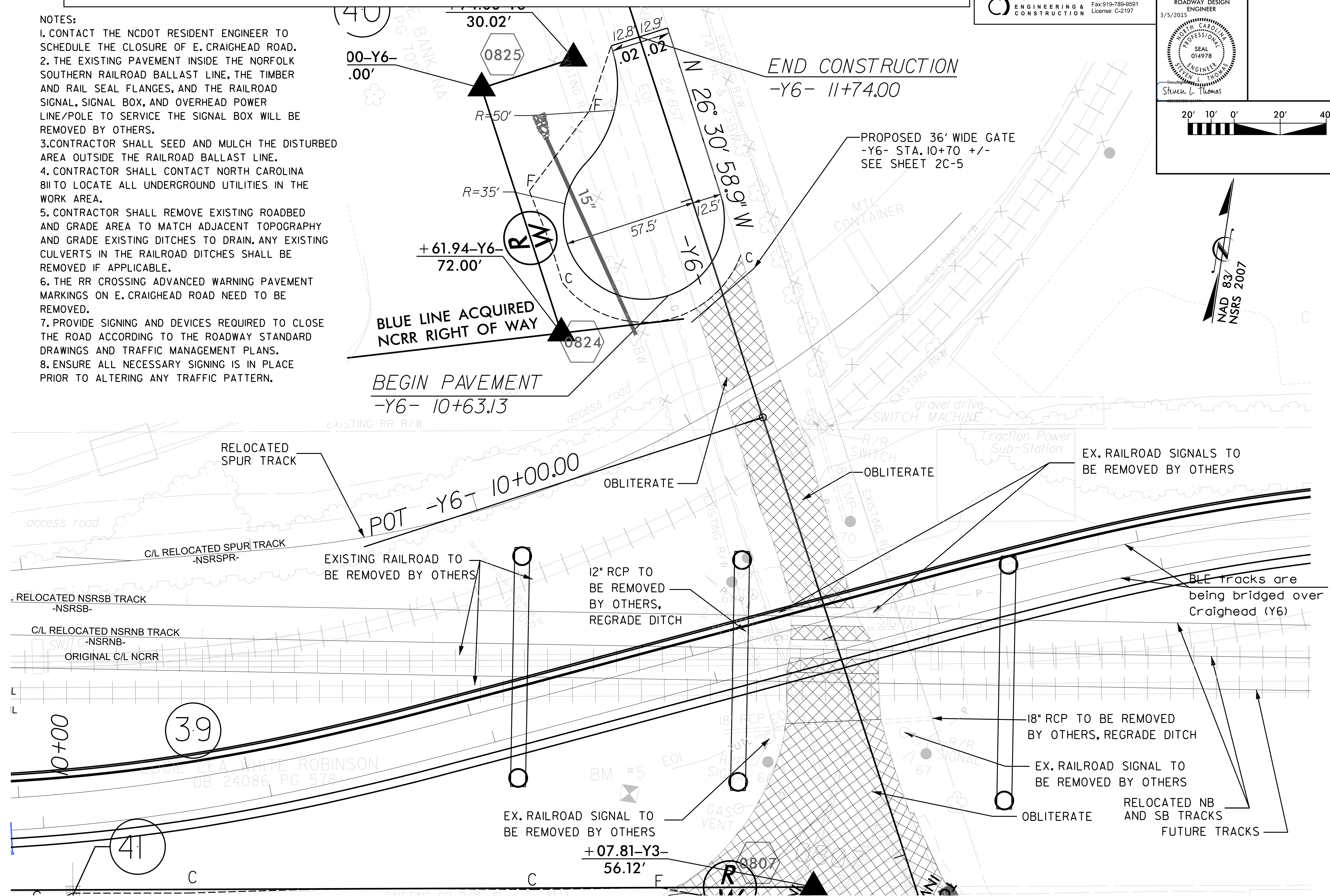
EAST CRAIGHEAD ROAD CROSSING CLOSURE DETAIL



PROJECT REFERENCE NO. U-5008	SHEET NO. 2B-3
RW SHEET NO.	
ROADWAY DESIGN ENGINEER 3/5/2015	

NOTES:

1. CONTACT THE NCDOT RESIDENT ENGINEER TO SCHEDULE THE CLOSURE OF E. CRAIGHEAD ROAD.
2. THE EXISTING PAVEMENT INSIDE THE NORFOLK SOUTHERN RAILROAD BALLAST LINE, THE TIMBER AND RAIL SEAL FLANGES, AND THE RAILROAD SIGNAL, SIGNAL BOX, AND OVERHEAD POWER LINE/POLE TO SERVICE THE SIGNAL BOX WILL BE REMOVED BY OTHERS.
3. CONTRACTOR SHALL SEED AND MULCH THE DISTURBED AREA OUTSIDE THE RAILROAD BALLAST LINE.
4. CONTRACTOR SHALL CONTACT NORTH CAROLINA 811 TO LOCATE ALL UNDERGROUND UTILITIES IN THE WORK AREA.
5. CONTRACTOR SHALL REMOVE EXISTING ROADBED AND GRADE AREA TO MATCH ADJACENT TOPOGRAPHY AND GRADE EXISTING DITCHES TO DRAIN. ANY EXISTING CULVERTS IN THE RAILROAD DITCHES SHALL BE REMOVED IF APPLICABLE.
6. THE RR CROSSING ADVANCED WARNING PAVEMENT MARKINGS ON E. CRAIGHEAD ROAD NEED TO BE REMOVED.
7. PROVIDE SIGNING AND DEVICES REQUIRED TO CLOSE THE ROAD ACCORDING TO THE ROADWAY STANDARD DRAWINGS AND TRAFFIC MANAGEMENT PLANS.
8. ENSURE ALL NECESSARY SIGNING IS IN PLACE PRIOR TO ALTERING ANY TRAFFIC PATTERN.



SYSTEMS DESIGN CONSULTANTS