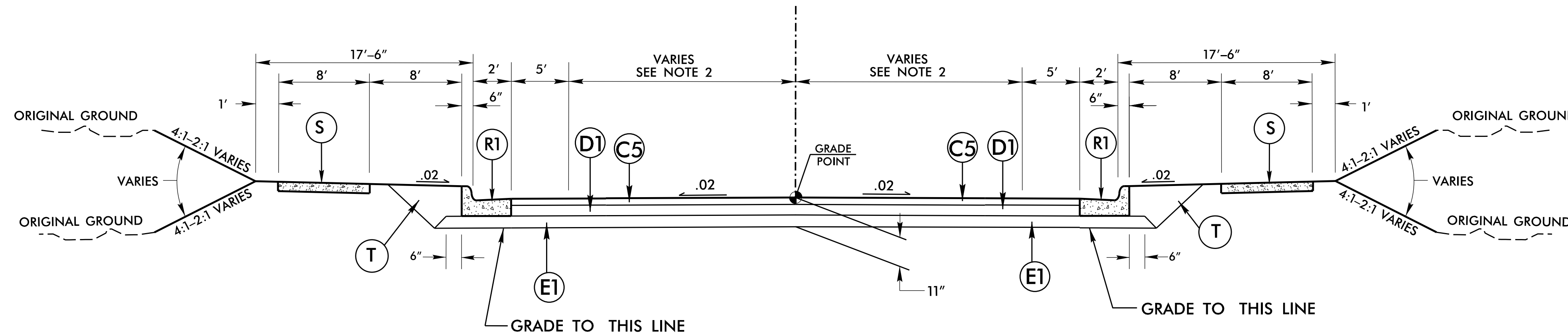


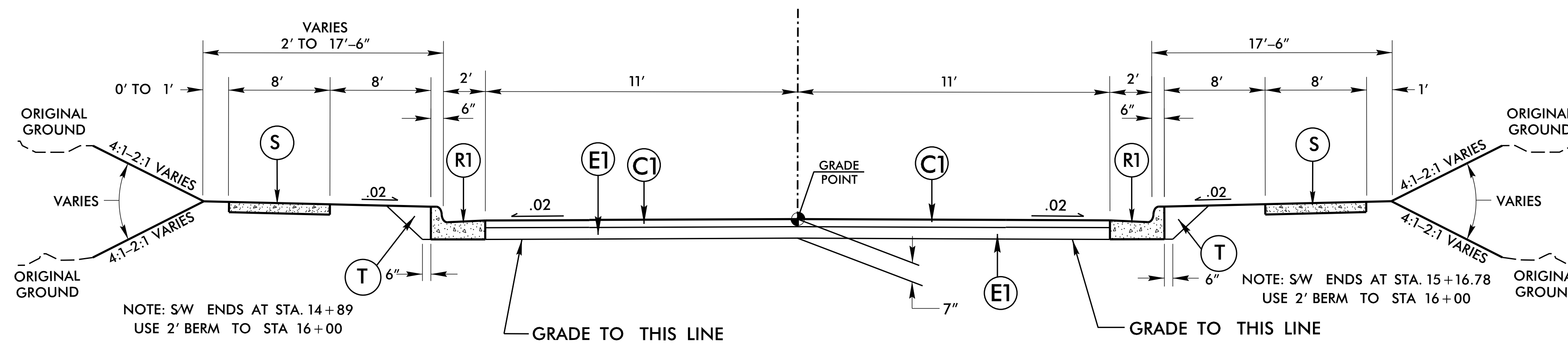
**-Y3 REV- NORTH DAVIDSON STREET**



**TYPICAL SECTION NO. 8**  
-Y3 REV- STA. 12+08.12 TO 19+20.38

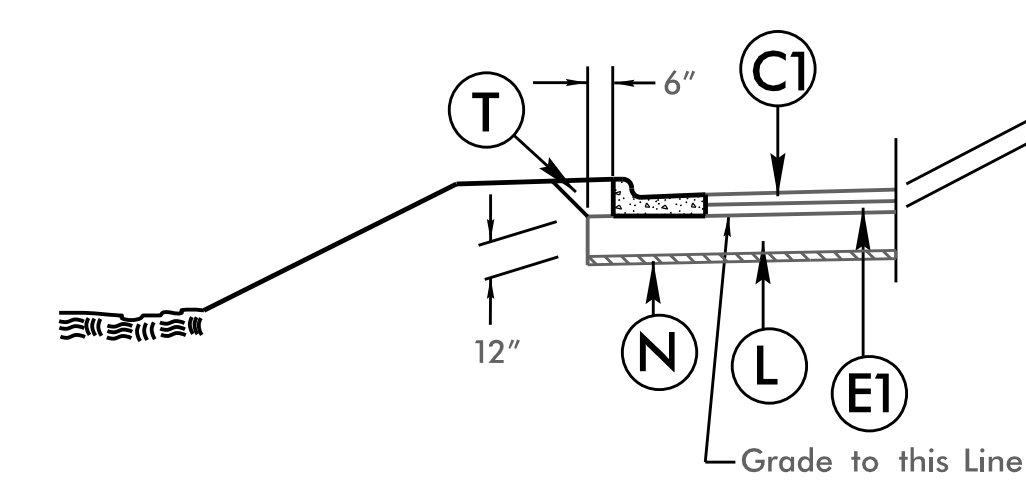
**NOTE 2:**  
- VARIES FROM 12'-2" AT STATION 13+58.91 TO 11'-0" AT STATION 15+64.32 RT AND LT.  
- VARIES FROM 11'-0" AT STATION 17+20.38 TO 16'-6" AT STATION 18+20.38 RT AND LT.

**-Y4 - BEARWOOD AVENUE**

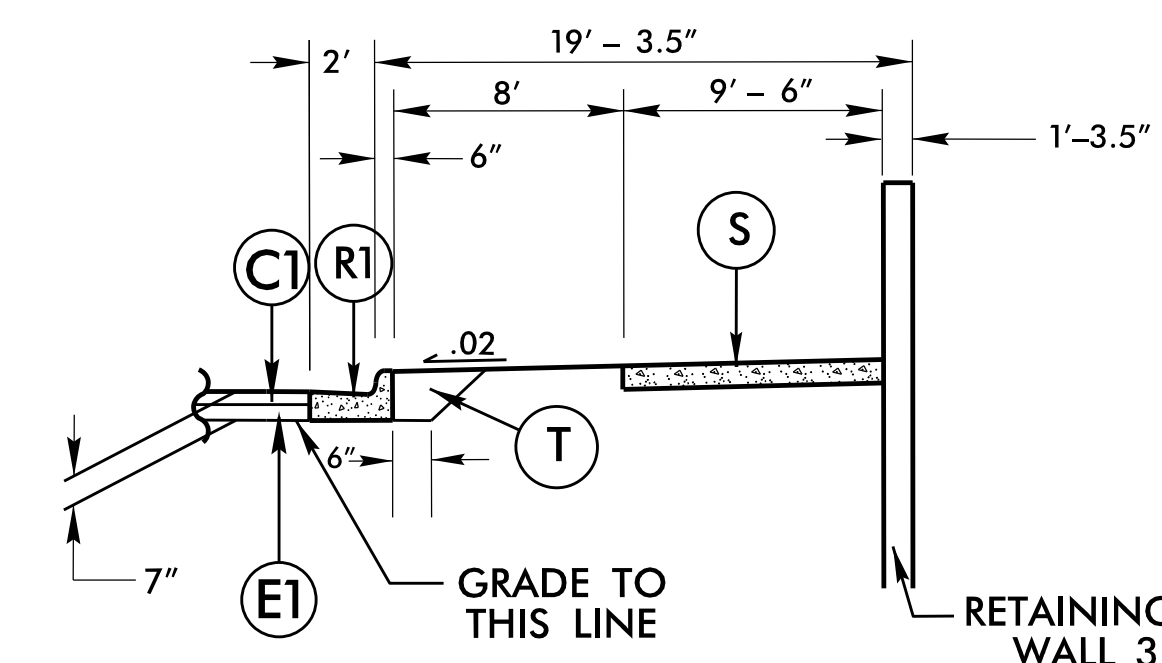


**TYPICAL SECTION NO. 9**  
-Y4- STA. 10+17.32 TO 16+00.00

**SHALLOW UNDERCUT**



-Y4 STA. 10+18 TO 16+00  
See Cross Sections for Limits



**PARTIAL SECTION NO. 9A**  
-Y4- STA. 13+72.94 TO STA. 14+95.40 RT

PAVEMENT EDGE SLOPES 1:1 UNLESS SHOWN OTHERWISE

NOT TO SCALE

PAVEMENT SCHEDULE	
C1	3" SF9.5A
C2	1 1/2" SF9.5A
C3	3" S9.5C
C4	VAR. S9.5C
C5	3" S9.5B
C6	VAR. S9.5B
C7	1 1/2" S9.5B
C8	1 1/2" S9.5C
D1	4" I19.0B
D2	VAR. I19.0B
D3	4" I19.0C
D4	VAR. I19.0C
E1	4" B25.0B
E2	VAR. B25.0B
E3	3" B25.0C
E4	7.5" B25.0C
E5	VAR. B25.0C
E6	4" B25.0C
J1	10" ABC
L	CL IV SUBGR. STAB.
N	GEOTEXTILE
R1	2'-6" C & G
R2	13"x6" CURB
R3	5" MONO. ISLAND
S	4" SIDEWALK
T	EARTH MATERIAL
U	EXISTING PAVEMENT
W	WEDGING
Y1	0" TO 1 1/2" MILLING
Y2	INCIDENTAL MILLING
Y3	1 1/2" MILLING