

**NOTES**

ALL PRESTRESSING STRANDS SHALL BE 7-WIRE LOW-RELAXATION GRADE 270 STRANDS AND SHALL CONFORM TO AASHTO M203 EXCEPT FOR SAMPLING REQUIREMENTS WHICH SHALL BE IN ACCORDANCE WITH THE STANDARD SPECIFICATIONS.

ALL REINFORCING STEEL SHALL BE GRADE 60.

EMBEDDED PLATE "B-1" SHALL BE GALVANIZED IN ACCORDANCE WITH THE STANDARD SPECIFICATIONS.

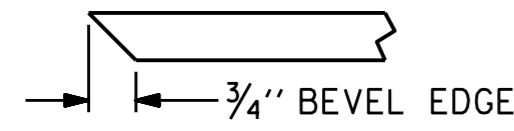
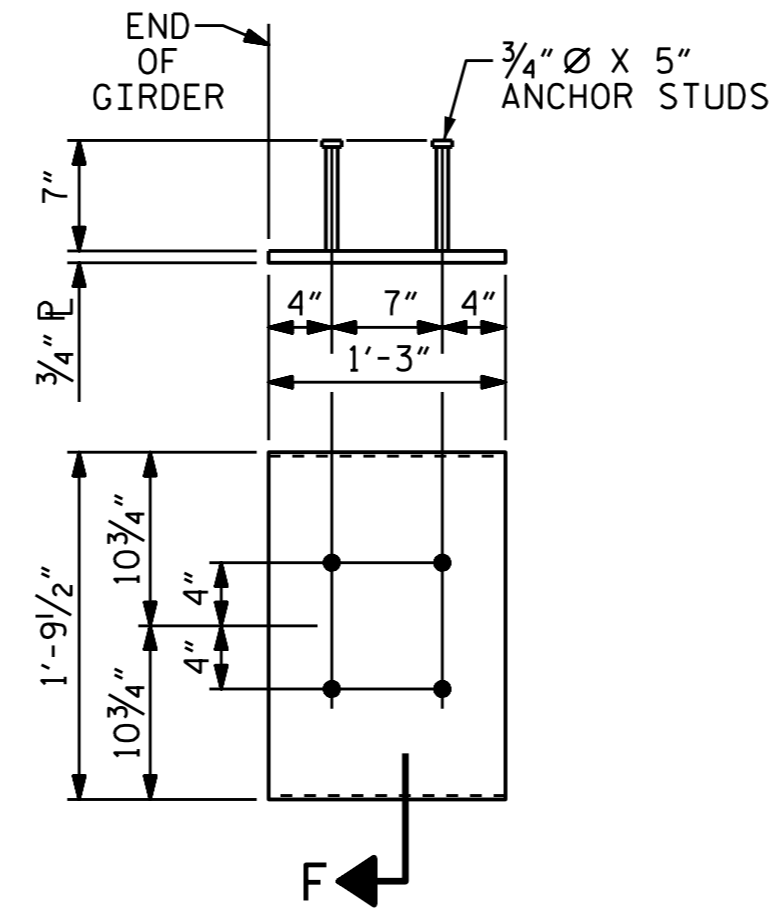
ANCHOR STUDS SHALL CONFORM TO AASHTO M169 GRADES 1010 THROUGH 1020 OR APPROVED EQUAL, AND SHALL MEET THE TYPE "B" REQUIREMENTS OF SUBSECTION 7.3 OF THE ANSI/AASHTO/AWS D1.5 BRIDGE WELDING CODE.

AT ENDS OF GIRDERS TO BE EMBEDDED IN CONCRETE DIAPHRAGMS OR END WALLS, PRESTRESSING STRANDS MAY EXTEND A MAXIMUM OF 2" BEYOND THE GIRDER ENDS. OTHERWISE, PRESTRESSING STRANDS SHALL BE CUT FLUSH WITH THE GIRDER ENDS.

THE TRANSFER OF LOAD FROM THE ANCHORAGES TO THE GIRDER SHALL BE DONE WHEN CONCRETE HAS REACHED A COMPRESSIVE STRENGTH OF NOT LESS THAN 4,100 PSI FOR SPANS A & C AND NOT LESS THAN 5,900 PSI FOR SPAN B.

DEPENDING ON THE TYPE OF SYSTEM USED TO SUPPORT THE DECK SLAB FORMS, PRESET ANCHORS MAY BE NECESSARY IN THE PRESTRESSED CONCRETE GIRDER.

THE TOP SURFACE OF THE GIRDER, EXCLUDING THE OUTSIDE 4", SHALL BE RAKED TO A DEPTH OF 1/4".



**SECTION "F"**

(SEE NOTES)

**EMBEDDED PLATE "B-1" DETAILS  
FOR AASHTO TYPE III GIRDER**

(2 REQ'D PER GIRDER)

PROJECT NO. B-5105  
MECKLENBURG COUNTY  
STATION: 20+08.00 -L-

SHEET 4 OF 4



| STATE OF NORTH CAROLINA<br>DEPARTMENT OF TRANSPORTATION<br>RALEIGH             |     |       |     |     |       | SHEET NO.<br>S-16  |
|--|-----|-------|-----|-----|-------|--------------------|
| STANDARD<br>PRESTRESSED CONCRETE GIRDER<br>CONTINUOUS FOR LIVE LOAD<br>DETAILS |     |       |     |     |       | TOTAL SHEETS<br>38 |
| REVISIONS  |     |       |     |     |       | NO.                |
| NO.  | BY: | DATE: | NO. | BY: | DATE: |                    |
| 1  |     |       | 3   |     |       | 38                 |
| 2  |     |       | 4   |     |       |                    |

ASSEMBLED BY : R. P. PATEL DATE : 9-13-13  
CHECKED BY : J. P. MCCARTHA DATE : 9-27-13

DRAWN BY : ELR 11/91 REV. 10/1/11 MAA/GM DESIGN ENGINEER OF RECORD:  
CHECKED BY : GRP 11/91 REV. 1/15 MAA/TMG R. P. PATEL DATE : 5-4-15  
REV. 2/15 MAA/TMG