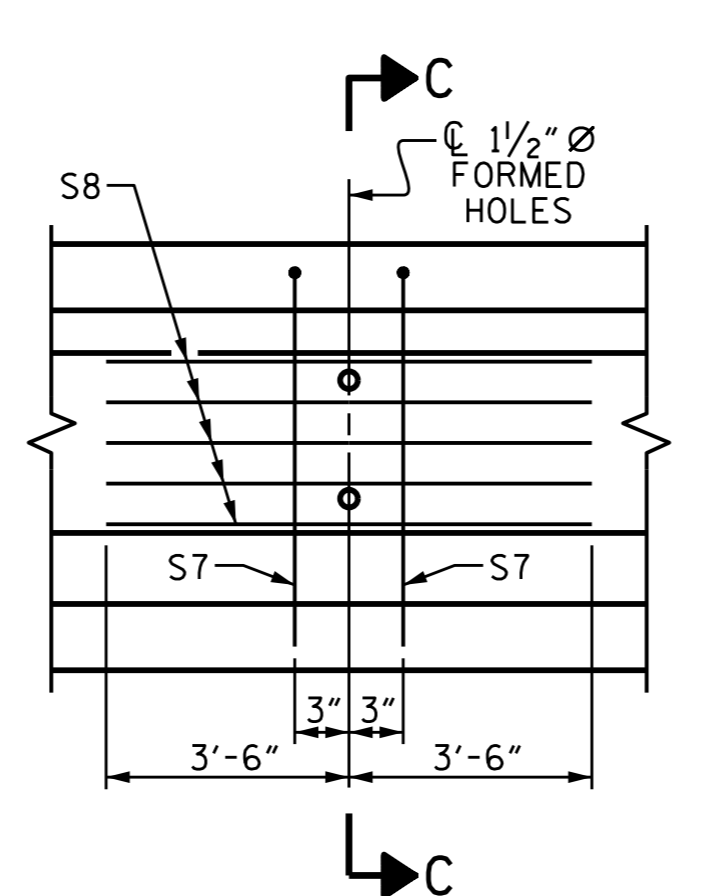


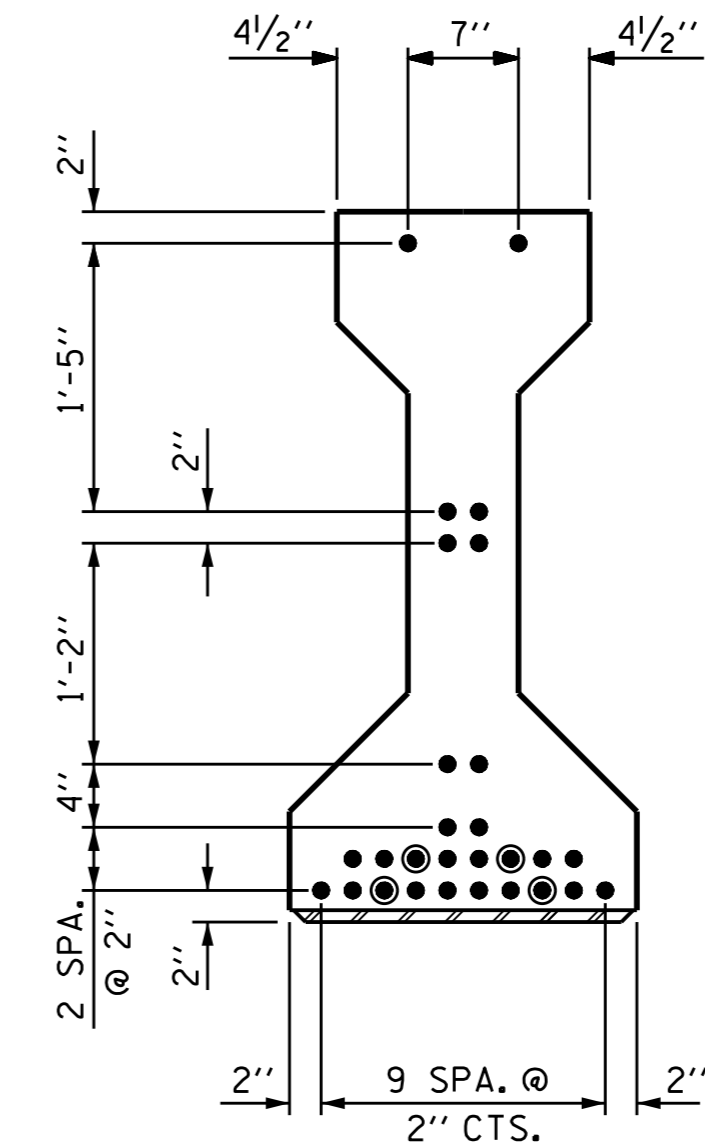
SECTION B-B

SECTION C-C
(S1 BARS NOT SHOWN)



PARTIAL ELEVATION

SHOWING INTERMEDIATE DIAPHRAGM REINFORCING STEEL FOR GIRDERS.



0.6" Ø LOW RELAXATION STRAND LAYOUT

DEBONDING LEGEND

- FULLY BONDED STRANDS
- STRANDS DEBONDED FOR 10'-0" FROM END OF GIRDER

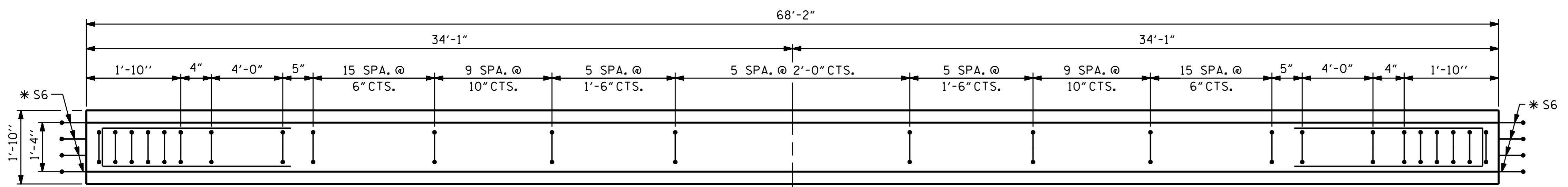
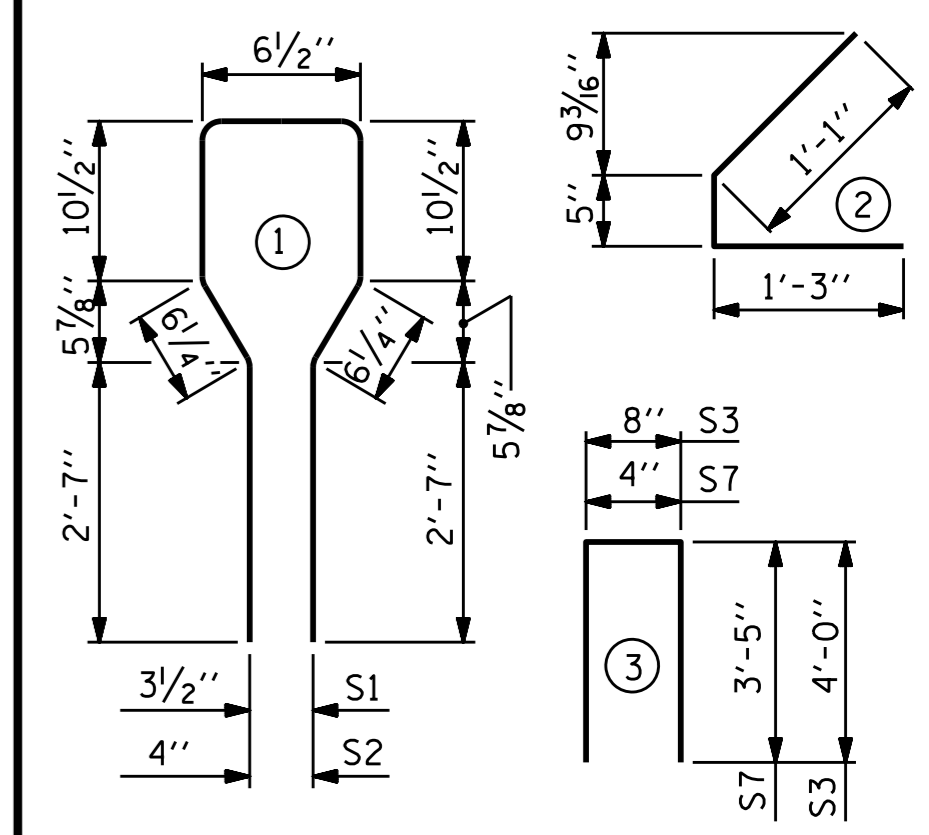
| 0.6" Ø L. R. GRADE 270 STRANDS | | |
|--------------------------------|--|--|
| AREA (SQUARE INCHES) | ULTIMATE STRENGTH (LBS. PER STRAND) | APPLIED PRESTRESS (LBS. PER STRAND) |
| 0.217 | 58,600 | 43,950 |

| REINFORCING STEEL FOR ONE GIRDER | | | | | |
|----------------------------------|--------|------|------|--------|--------|
| BAR | NUMBER | SIZE | TYPE | LENGTH | WEIGHT |
| S1 | 90 | #4 | 1 | 8'-6" | 511 |
| S2 | 12 | #6 | 1 | 8'-6" | 153 |
| S3 | 4 | #4 | 3 | 8'-8" | 23 |
| S4 | 76 | #4 | 2 | 2'-9" | 140 |
| *S6 | 8 | #5 | STR | 3'-8" | 31 |
| S7 | 2 | #5 | 3 | 7'-2" | 15 |
| S8 | 5 | #4 | STR | 7'-0" | 23 |

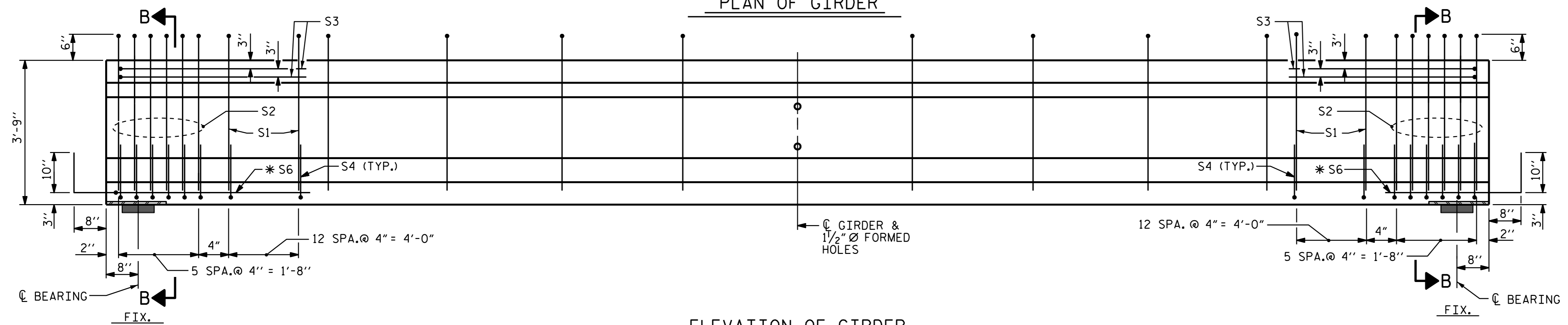
*NOTE: S6 BARS SHALL BE BENT BEFORE SHIPMENT. HEAT BENDING SHALL NOT BE ALLOWED.

BAR TYPES

ALL BAR DIMENSIONS ARE OUT-TO-OUT



PLAN OF GIRDER



ELEVATION OF GIRDER

(SEE "PARTIAL ELEVATION" FOR ADDITIONAL "S" BARS)

| QUANTITIES FOR ONE GIRDER | | |
|---------------------------|----------------------------|-----------------------------|
| REINFORCING STEEL LB. | 7,500 PSI CONCRETE C.Y. | 0.6" Ø L. R. STRANDS No. |
| 896 | 9.8 | 28 |

GIRDERS REQUIRED

| NUMBER | LENGTH | TOTAL LENGTH |
|--------|--------|--------------|
| 6 | 68'-2" | 409'-0" |

PROJECT NO. B-5105
MECKLENBURG COUNTY
 STATION: 20+08.00 -L-

SHEET 2 OF 4



STATE OF NORTH CAROLINA
 DEPARTMENT OF TRANSPORTATION
 RALEIGH
 STANDARD
 AASHTO TYPE III
 PRESTRESSED CONCRETE GIRDER
 CONTINUOUS FOR LIVE LOAD
 (SPAN B)

| REVISIONS | | | | SHEET NO. | |
|-----------|-----|-------|-----|-----------|-------|
| NO. | BY: | DATE: | NO. | BY: | DATE: |
| 1 | | | 3 | | |
| 2 | | | 4 | | |

ASSEMBLED BY : R. P. PATEL DATE : 9-13-13
 CHECKED BY : J. P. MCCARTHA DATE : 9-27-13
 DRAWN BY : ELR 8/91 REV. 5/1/06R TLA/GM DESIGN ENGINEER OF RECORD:
 CHECKED BY : GRP 8/91 REV. 10/1/11 MAA/GM R. P. PATEL DATE : 5-4-15
 REV. 1/15 MAA/TMG