

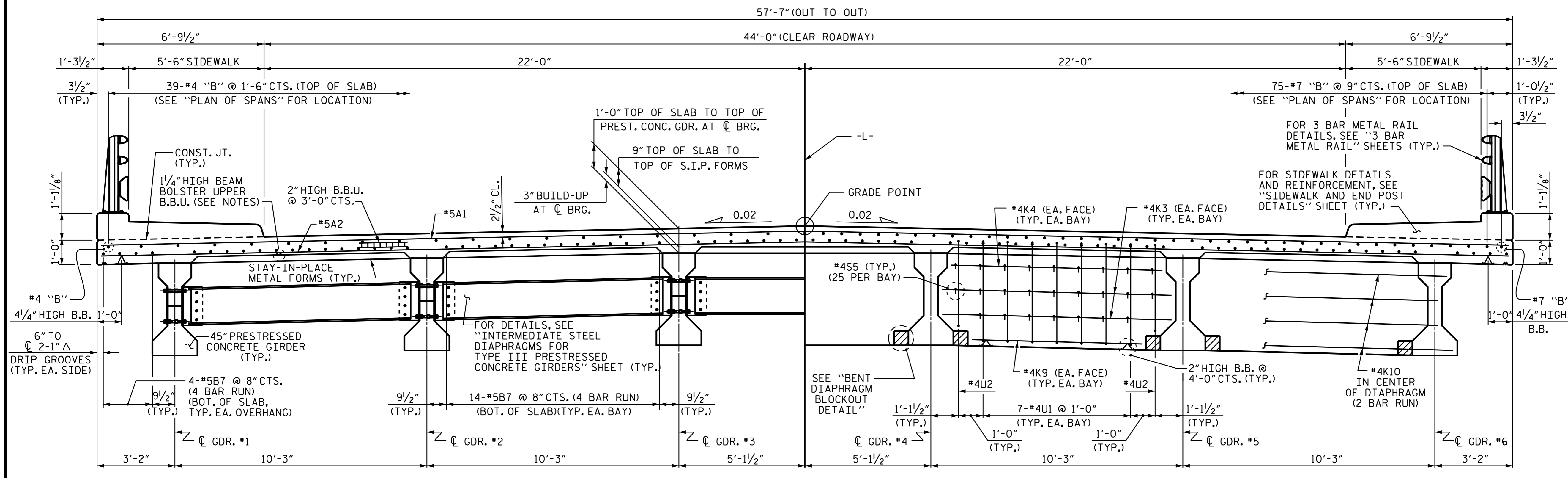
NOTES

PROVIDE 1/4" HIGH BEAM BOLSTERS UPPER AT 4'-0" CTS. ATOP THE METAL STAY-IN-PLACE FORMS TO SUPPORT THE BOTTOM MAT OF 'A' BARS. WHEN USING REMOVABLE FORMS, PROVIDE CONTINUOUS HIGH CHAIRS FOR METAL DECK (C.H.C.M.) @ 4'-0" CTS. WITH A HEIGHT TO SUPPORT THE BOTTOM MAT OF 'A' BARS A CLEAR DISTANCE OF 2 1/2" ABOVE THE TOP OF THE REMOVABLE FORM.

LONGITUDINAL STEEL MAY BE SHIFTED SLIGHTLY, AS NECESSARY, TO AVOID INTERFERENCE WITH STIRRUPS IN PRESTRESSED CONCRETE GIRDERS.

PREVIOUSLY CAST CONCRETE IN A CONTINUOUS UNIT SHALL HAVE ATTAINED A MINIMUM COMPRESSIVE STRENGTH OF 3,000 PSI BEFORE ADDITIONAL CONCRETE IS CAST IN THE UNIT.

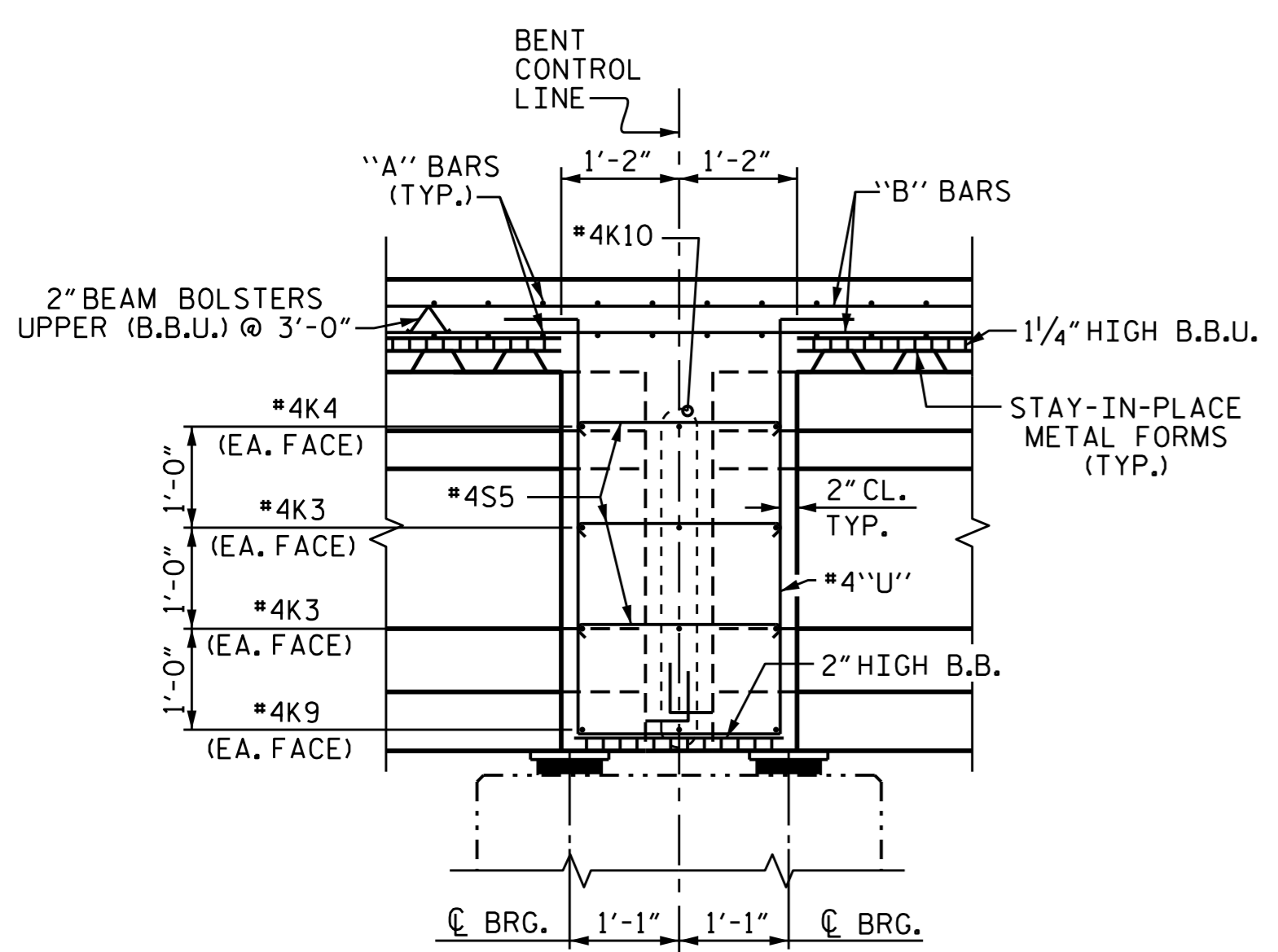
FOR WING ELEVATIONS AND DETAILS, SEE "PLAN OF SPAN DETAILS" SHEETS.



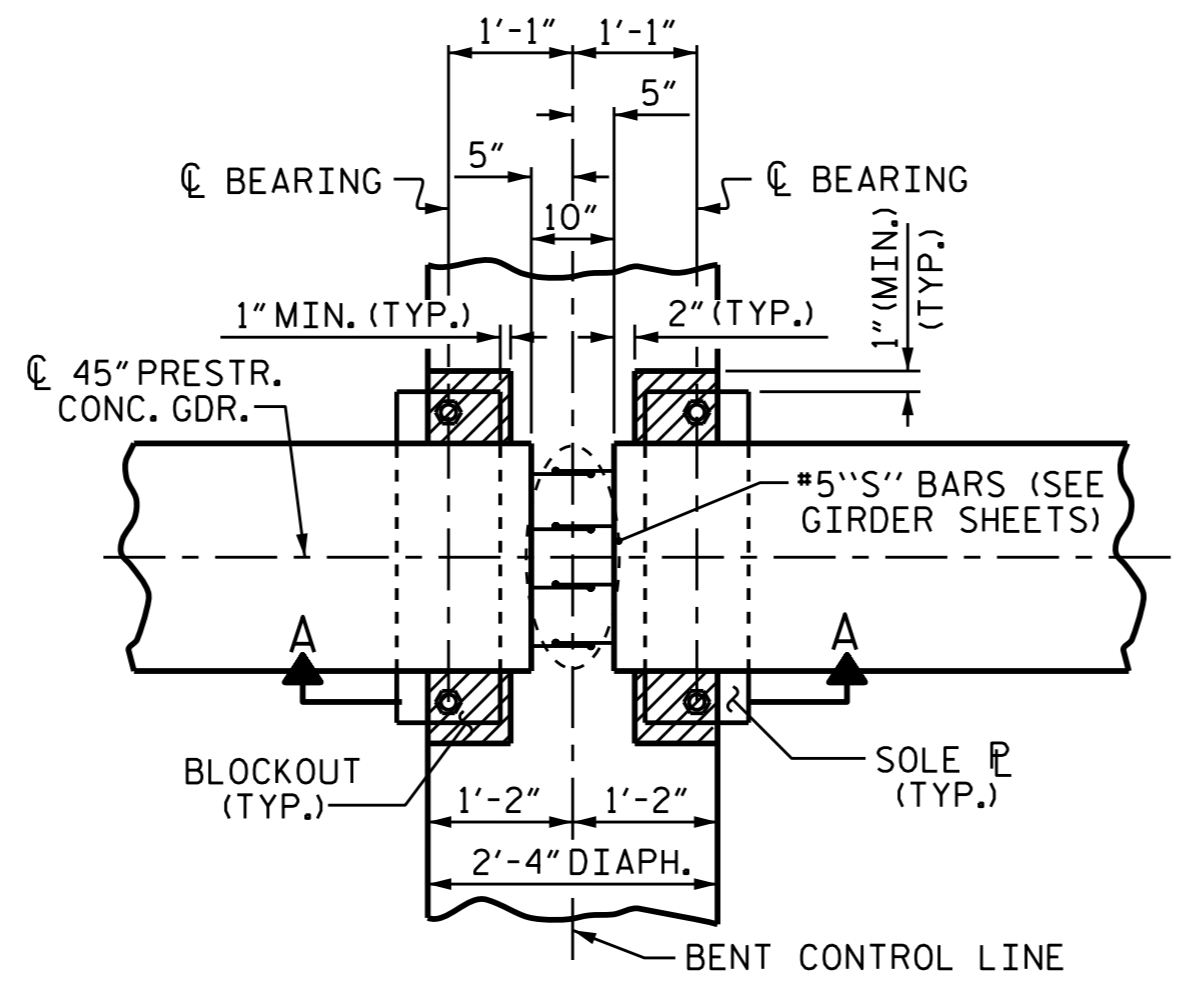
TYPICAL HALF-SECTION AT INTERMEDIATE DIAPHRAGM

TYPICAL HALF-SECTION AT BENTS

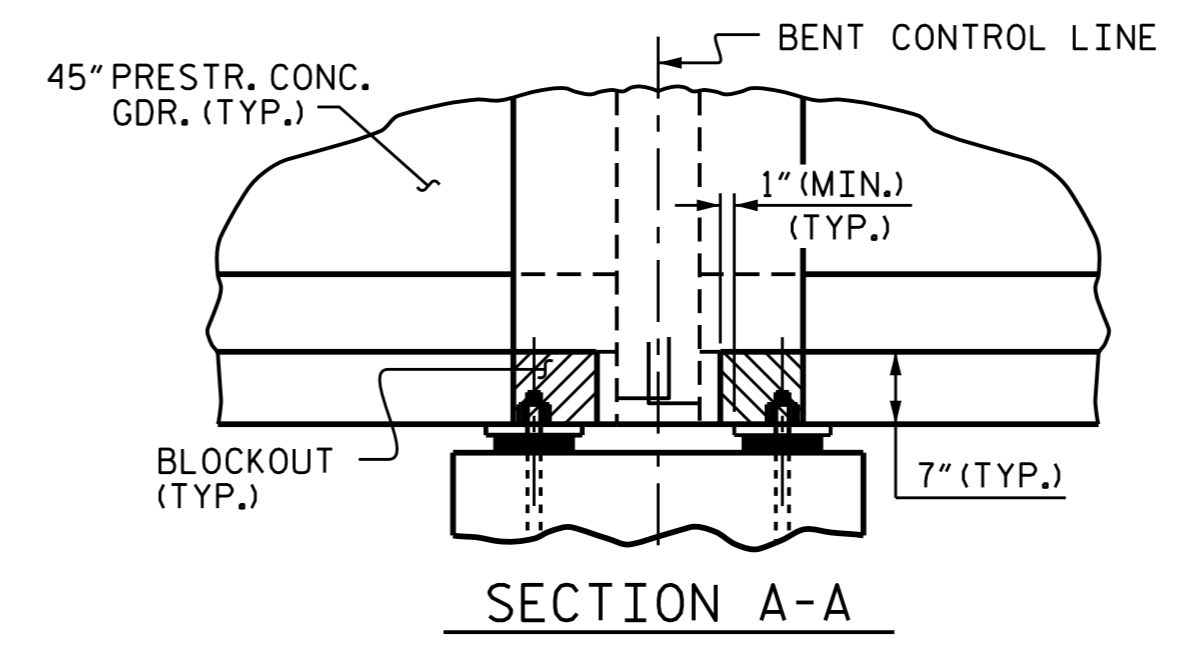
TYPICAL SECTION



SECTION THROUGH BENT DIAPHRAGM
BENTS 1 & 2



PLAN OF BENT DIAPHRAGM
BENTS 1 & 2



BENT DIAPHRAGM BLOCKOUT DETAIL

PROJECT NO. B-5105
MECKLENBURG COUNTY
 STATION: 20+08.00 -L-
 SHEET 1 OF 2

STATE OF NORTH CAROLINA
 DEPARTMENT OF TRANSPORTATION
 RALEIGH
 SUPERSTRUCTURE
 TYPICAL SECTION



DRAWN BY : K.D. LAYNE DATE : 9-05-13
 CHECKED BY : M. K. BEARD DATE : 10-08-13
 DESIGN ENGINEER OF RECORD : R. P. PATEL DATE : 10-15-13

| REVISIONS | | | | SHEET NO. | |
|-----------|-----|-------|-----|-----------|--------------|
| NO. | BY: | DATE: | NO. | BY: | DATE: |
| 1 | | | 3 | | |
| 2 | | | 4 | | |
| | | | | | TOTAL SHEETS |
| | | | | | 38 |