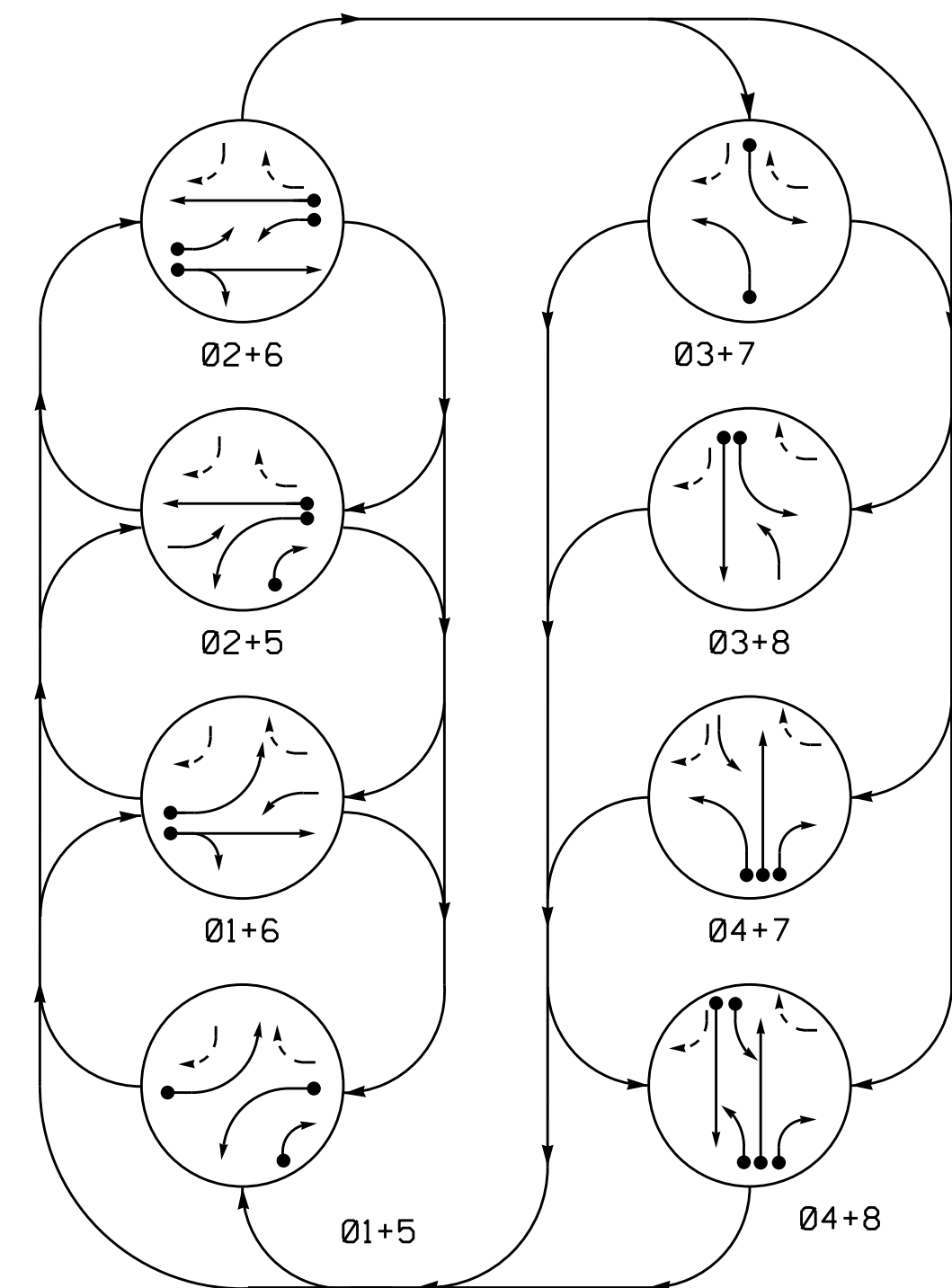


PHASING DIAGRAM



PHASING DIAGRAM DETECTION LEGEND

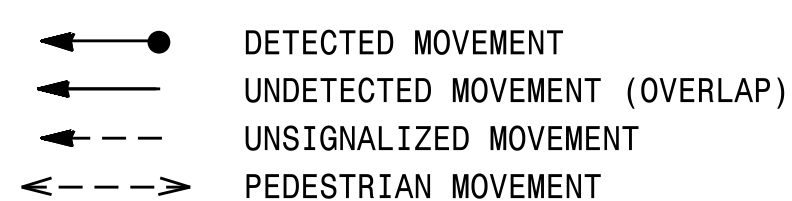
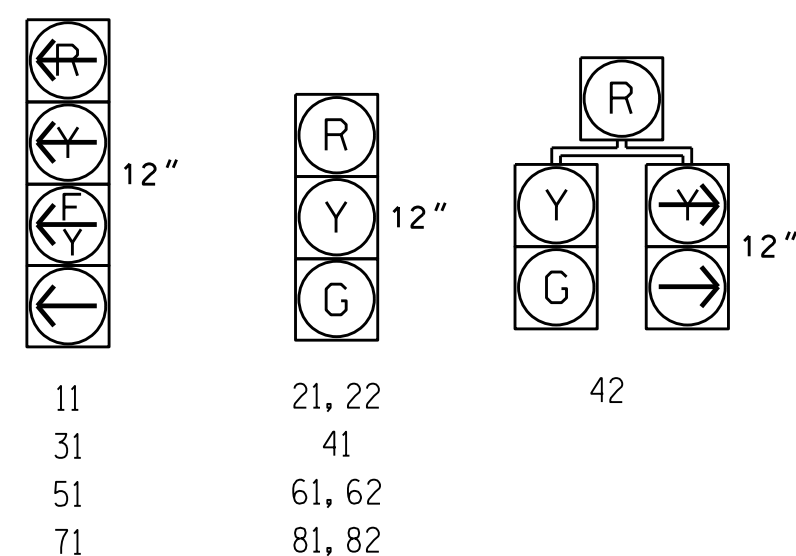


TABLE OF OPERATION

SIGNAL FACE	PHASE							
	01+5	01+6	02+5	02+6	03+7	03+8	04+7	04+8
11	←	←	←	←	←	←	←	←
21, 22	R	R	G	G	R	R	R	R
31	←	←	←	←	←	←	←	←
41	R	R	R	R	R	R	G	G
42	←	←	←	←	←	←	G	G
51	←	←	←	←	←	←	←	←
61, 62	R	G	R	G	R	R	R	R
71	←	←	←	←	←	←	←	←
81, 82	R	R	R	R	R	G	R	G

SIGNAL FACE I.D.

All Heads L.E.D.



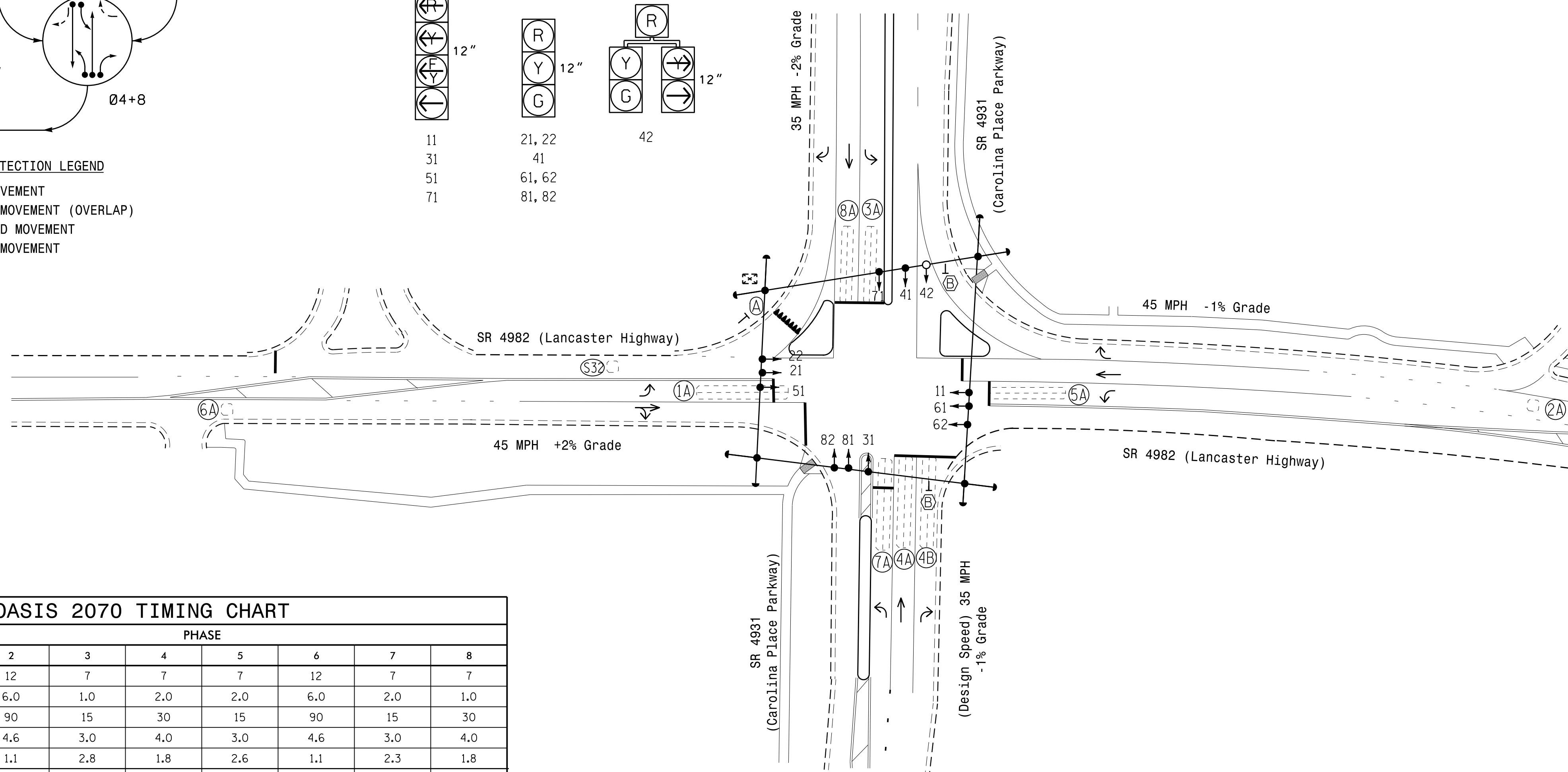
OASIS 2070 LOOP & DETECTOR INSTALLATION

LOOP	SIZE (FT)	DISTANCE FROM STOPBAR (FT)	TURNS	NEW LOOP	DETECTOR PROGRAMMING				STRETCH TIME	DELAY TIME	SYSTEM LOOP	NEW CARD
					PHASE	CALLING	EXTENSION	FULL TIME DELAY				
1A	6X40	0	2-4-2	-	1	Y	Y	-	-	15	-	-
					6	Y	Y	Y	-	3	-	-
2A	6X6	300	5	-	2	Y	Y	-	-	-	-	-
3A	6X60	+5	2-4-2	-	3	Y	Y	-	-	15	-	-
					8	Y	Y	-	-	-	-	-
4A	6X40	0	2-4-2	-	4	Y	Y	-	-	-	-	-
4B	6X40	0	2-4-2	-	4/5	Y	Y	-	-	10	-	-
5A	6X40	+15	2-4-2	-	5	Y	Y	-	-	15	-	-
					2	Y	Y	Y	-	3	-	-
6A	6X6	300	5	-	6	Y	Y	-	-	-	-	-
7A	6X60	+15	2-4-2	-	7	Y	Y	-	-	15	-	-
					4	Y	Y	-	-	-	-	-
8A	6X40	+5	2-4-2	-	8	Y	Y	-	-	-	-	-
S32	6X6	+180	EXIST	-	-	-	-	-	-	-	Y	-

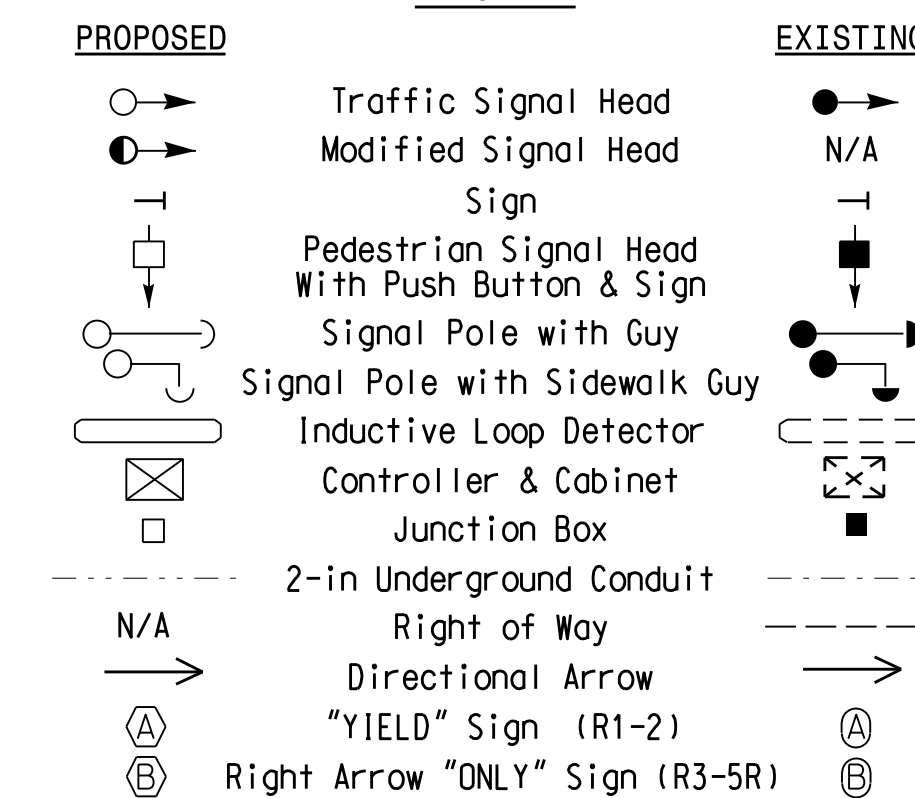
8 Phase Fully Actuated NC 51 (Pineville) CLS

NOTES

- Refer to "Roadway Standard Drawings NCDOT" dated January 2012 and "Standard Specifications for Roads and Structures" dated January 2012.
- Do not program signal for late night flashing operation unless otherwise directed by the Engineer.
- Phase 1 and/or phase 5 may be lagged.
- Phase 3 and/or phase 7 may be lagged.
- Set all detector units to presence mode.
- Maximum times shown in timing chart are for free-run operation only. Coordinated signal system timing values supersede these values.
- Closed loop system data: Controller Asset # 1338.



LEGEND



OASIS 2070 TIMING CHART

FEATURE	PHASE							
	1	2	3	4	5	6	7	8
Min Green 1 *	7	12	7	7	7	12	7	7
Extension 1 *	2.0	6.0	1.0	2.0	2.0	6.0	2.0	1.0
Max Green 1 *	15	90	15	30	15	90	15	30
Yellow Clearance	3.0	4.6	3.0	4.0	3.0	4.6	3.0	4.0
Red Clearance	2.3	1.1	2.8	1.8	2.6	1.1	2.3	1.8
Red Revert	2.0	2.0	2.0	2.0	2.0	2.0	2.0	2.0
Walk 1 *	-	-	-	-	-	-	-	-
Don't Walk 1	-	-	-	-	-	-	-	-
Seconds Per Actuation *	-	2.5	-	-	-	2.5	-	-
Max Variable Initial *	-	34	-	-	-	34	-	-
Time Before Reduction *	-	30	-	-	-	30	-	-
Time To Reduce *	-	15	-	-	-	15	-	-
Minimum Gap	-	3.0	-	-	-	3.0	-	-
Recall Mode	-	MIN RECALL	-	-	-	MIN RECALL	-	-
Vehicle Call Memory	-	YELLOW	-	-	-	YELLOW	-	-
Dual Entry	-	-	-	ON	-	-	-	ON
Simultaneous Gap	ON	ON	ON	ON	ON	ON	ON	ON

* These values may be field adjusted. Do not adjust Min Green and Extension times for phases 2 and 6 lower than what is shown. Min Green for all other phases should not be lower than 4 seconds.

Signal Upgrade - Temporary Design

Prepared in the Offices of:

750 N. Greenfield Pkwy, Garner, NC 27529

SR 4982 (Lancaster Highway) at SR 4931 (Carolina Place Parkway)

Division 10 Mecklenburg County Pineville

PLAN DATE: March 2015 REVIEWED BY:

PREPARED BY: C. Pierce REVIEWED BY:

REVISIONS: _____ INIT. DATE: _____

SCALE: 0 40 1"=40'

SEAL

DocuSigned by: S. J. Williams 4/16/2015

SIG. INVENTORY NO. 10-1338 T

16-APP-2015-03-24
R:\Projects\2015\10-1338\Signal\10-1338_Sig.dgn
C:\Users\cpierce