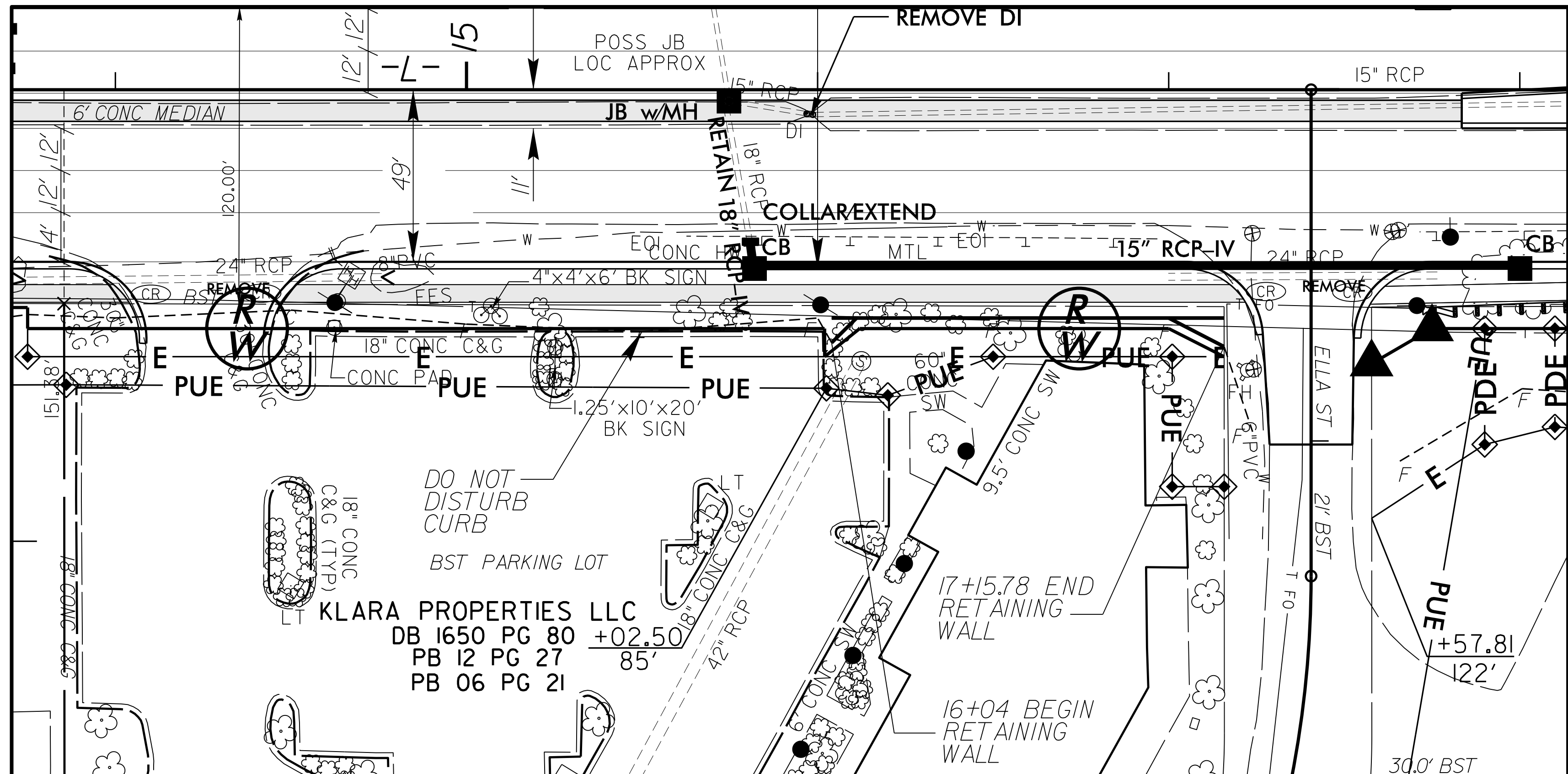


GEOTECHNICAL ENGINEER

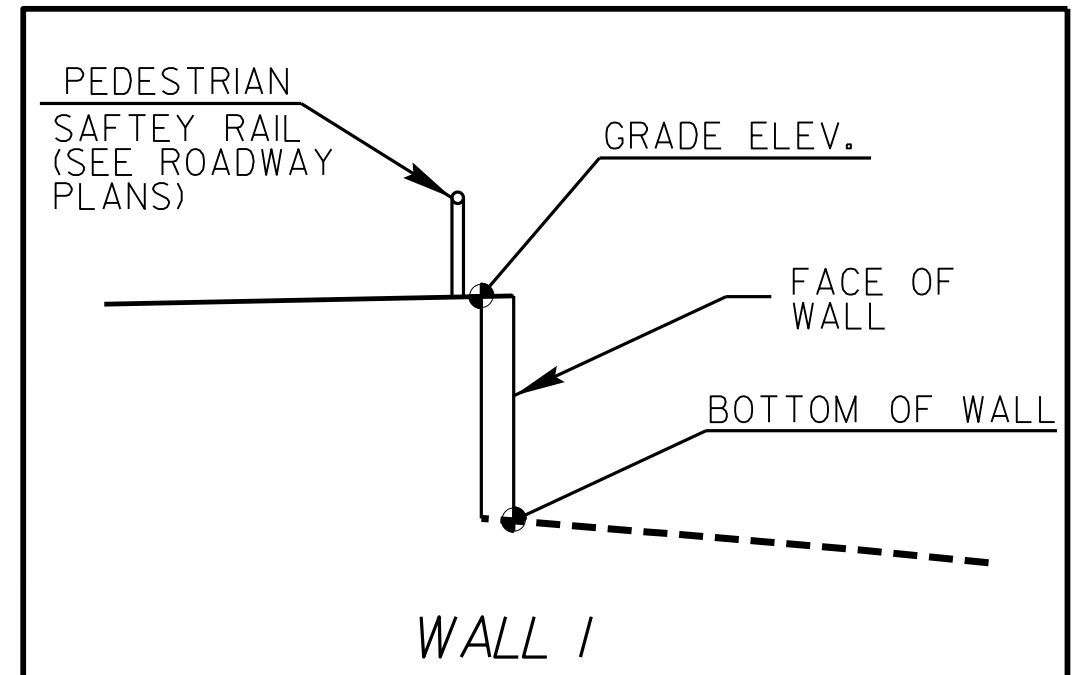
ENGINEER

Shane C. Clark 7/15/2015

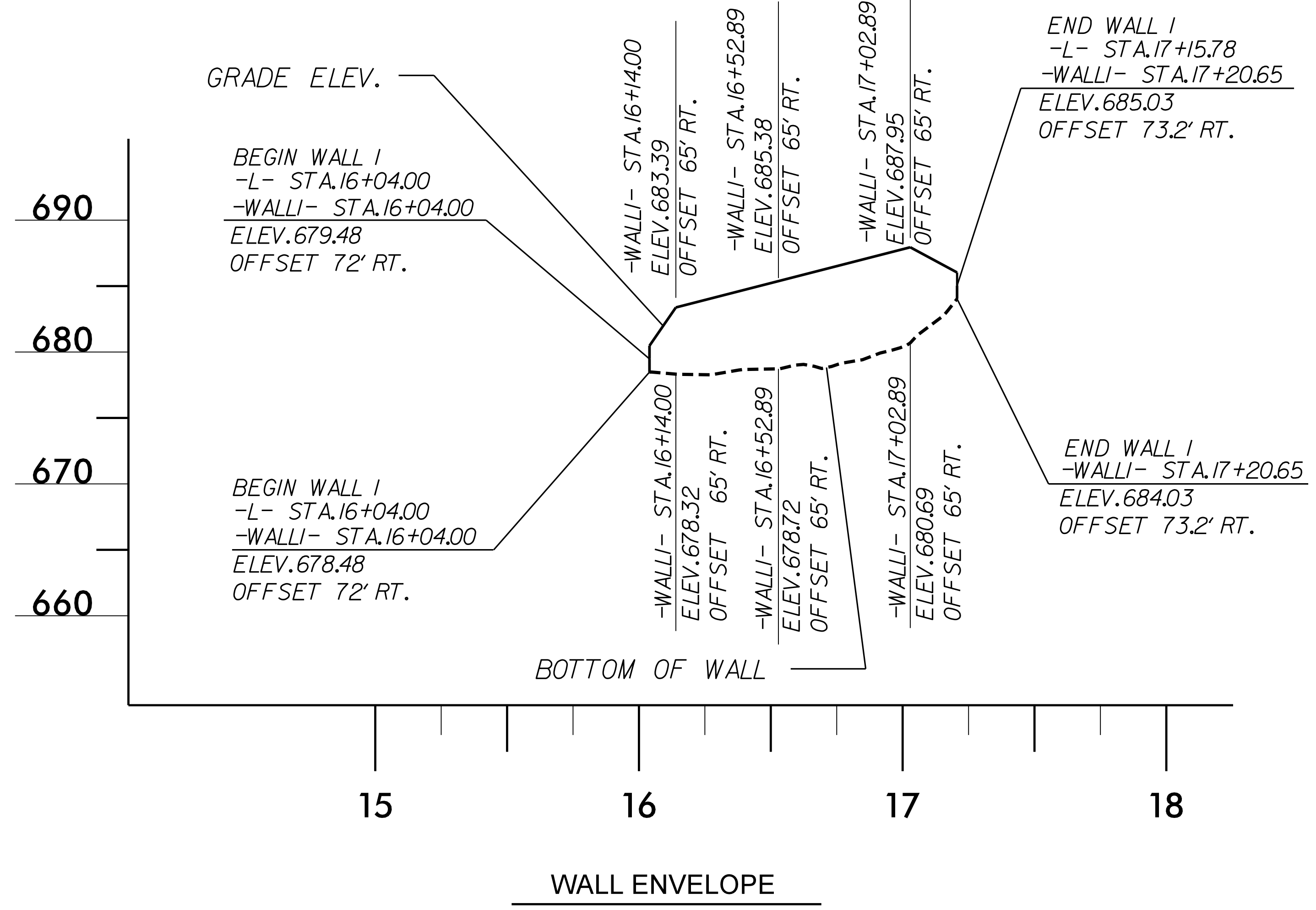
SIGNATURE DATE SIGNATURE DATE



LOCATION SKETCH



SECTION THRU WALL



ESTIMATED MSE WALL QUANTITIES

MSE RETAINING WALL #1	*930 SQ. FT.
-----------------------	--------------

* THIS QUANTITY ASSUMES A 2' MIN. EMBEDMENT

PROJECT NO.: B-5136
 CABARRUS COUNTY
 STATION: 16+04.00 -L- TO 17+15.78 -L-
 SHEET 1 OF 6

GEOTECHNICAL ENGINEERING UNIT

EASTERN REGIONAL OFFICE
 WESTERN REGIONAL OFFICE
 CONTRACT OFFICE

STATE OF NORTH CAROLINA
 DEPARTMENT OF TRANSPORTATION
 RALEIGH

MSE RETAINING WALL WALL #1

REVISIONS						SHEET NO.
NO.	BY	DATE	NO.	BY	DATE	W-1
1			3			TOTAL SHEETS
2			4			13

PREPARED BY: EJS DATE: 1/15
 REVIEWED BY: SCC DATE: 1/15