

NOTES

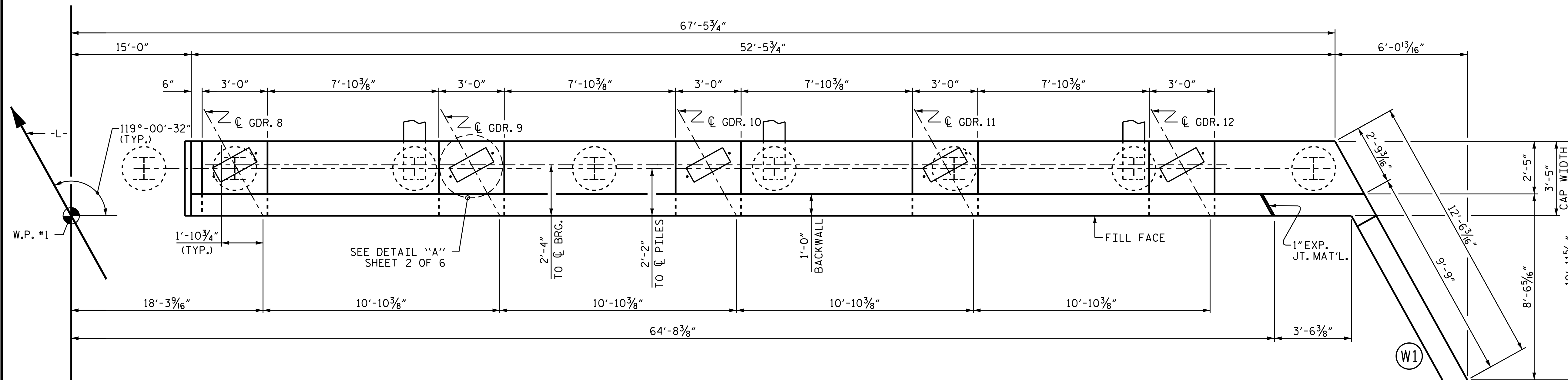
STIRRUPS AND "U" BARS IN CAP MAY BE SHIFTED AS NECESSARY TO CLEAR ANCHOR BOLTS.

BACKWALL SHALL BE PLACED BEFORE APPLYING THE EPOXY PROTECTIVE COATING.

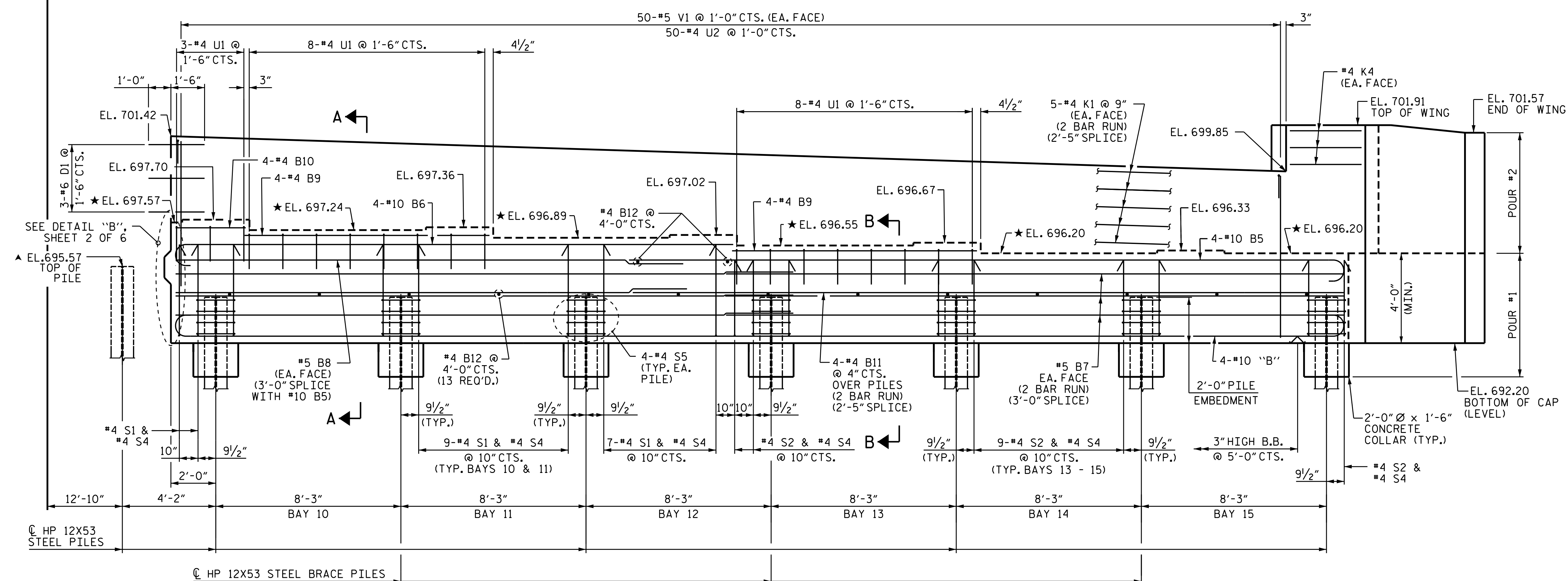
THE TOP SURFACE OF THE END BENT CAP EXCEPT THE BRIDGE SEAT BUILDUPS SHALL BE SLOPED TRANSVERSELY FROM THE FILL FACE TO THE BACK FACE AT THE RATE OF 2%.

THE CONTRACTOR SHALL PROVIDE FOR INSTALLATION OF THE 4" DIAMETER DRAIN PIPE THROUGH THE WING WALL AS REQUIRED FOR REINFORCED BRIDGE APPROACH FILLS. SEE THE ROADWAY PLANS. REINFORCING STEEL IN THE WING WALL MAY BE SHIFTED AS NECESSARY TO CLEAR THE DRAIN PIPE.

THE TOP SURFACE AREAS OF THE END BENT CAPS SHALL BE CURED IN ACCORDANCE WITH THE STANDARD SPECIFICATIONS EXCEPT THE MEMBRANE CURING COMPOUND METHOD SHALL NOT BE USED.



PLAN



ELEVATION

▲ DRIVE END PILE WITH STAGE I
★ ELEVATIONS BETWEEN BRIDGE SEAT BUILDUPS ARE SHOWN AT THIS POINT (TYP.)

DRAWN BY : M.E. GILES DATE : 8/4/14
CHECKED BY : M.K. BEARD DATE : 10/16/14
DESIGN ENGINEER OF RECORD : H.A. LOCKLEAR DATE : 10/16/14

18-FEB-2015 14:04
R:\Structures\Plans\B5136.SD.E1.01.dgn
hncarr@ll



PROJECT NO. B-5136
CABARRUS COUNTY
STATION: 21+74.92 -L-

SHEET 1 OF 6

STATE OF NORTH CAROLINA DEPARTMENT OF TRANSPORTATION RALEIGH						SHEET NO. S-50
SUBSTRUCTURE END BENT 1 STAGE I						
REVISIONS						TOTAL SHEETS 75
NO.	BY:	DATE:	NO.	BY:	DATE:	
1			3			
2			4			