

REINFORCING BAR SCHEDULE FOR STAGE I

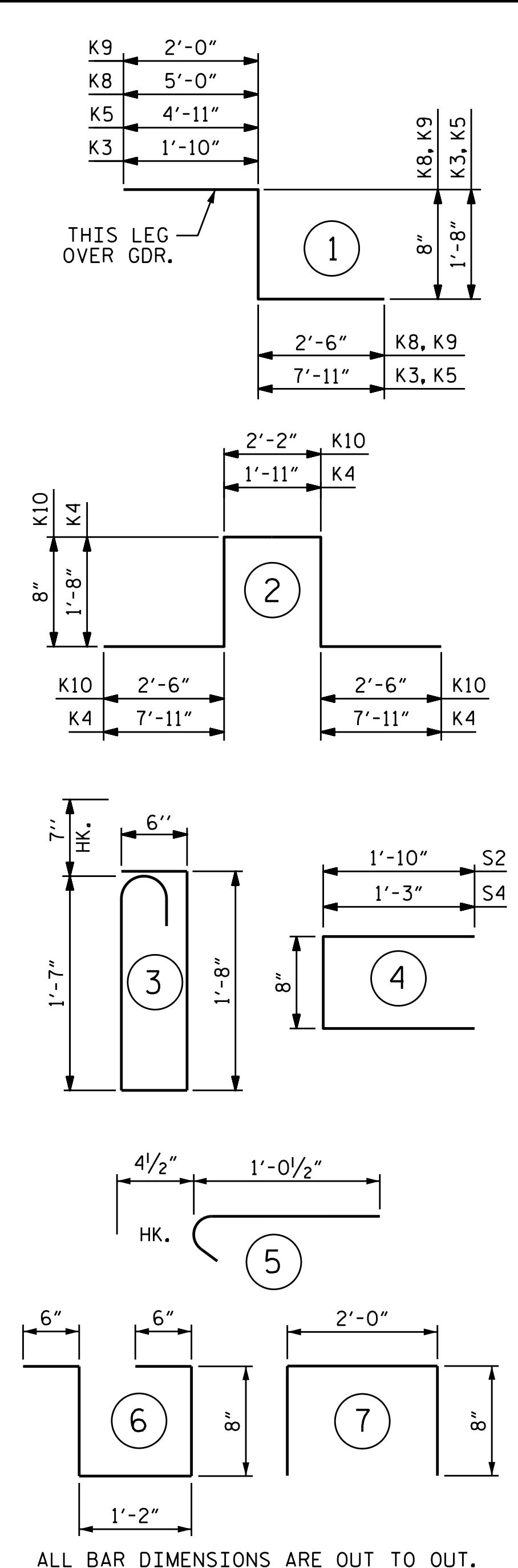
BAR TYPES

SPAN A						SPAN B						SPAN C																							
BAR NO.	SIZE	TYPE	LENGTH	WEIGHT		BAR NO.	SIZE	TYPE	LENGTH	WEIGHT	BAR NO.	SIZE	TYPE	LENGTH	WEIGHT	BAR NO.	SIZE	TYPE	LENGTH	WEIGHT	BAR NO.	SIZE	TYPE	LENGTH	WEIGHT										
* A1	102	#5	STR	42'-4"	4504	A203	6	#5	STR	35'-7"	223	* A1	237	#5	STR	42'-4"	10464	A203	6	#5	STR	35'-7"	223	* A1	96	#5	STR	42'-4"	4239	A203	6	#5	STR	35'-7"	223
A6	103	#5	STR	42'-4"	4548	A204	6	#5	STR	33'-4"	209	A6	238	#5	STR	42'-4"	10509	A204	6	#5	STR	33'-4"	209	A2	97	#5	STR	42'-4"	4283	A204	6	#5	STR	33'-4"	209
* A101	3	#5	STR	40'-2"	126	A205	6	#5	STR	31'-1"	195	* A101	3	#5	STR	40'-2"	126	A205	6	#5	STR	31'-1"	195	* A101	3	#5	STR	40'-2"	126	A205	6	#5	STR	31'-1"	195
* A102	3	#5	STR	37'-11"	119	A206	6	#5	STR	28'-10"	180	* A102	3	#5	STR	37'-11"	119	A206	6	#5	STR	28'-10"	180	* A102	3	#5	STR	37'-11"	119	A206	6	#5	STR	28'-10"	180
* A103	3	#5	STR	35'-8"	112	A207	6	#5	STR	26'-7"	166	* A103	3	#5	STR	35'-8"	112	A207	6	#5	STR	26'-7"	166	* A103	3	#5	STR	35'-8"	112	A207	6	#5	STR	26'-7"	166
* A104	3	#5	STR	33'-5"	105	A208	6	#5	STR	24'-4"	152	* A104	3	#5	STR	33'-5"	105	A208	6	#5	STR	24'-4"	152	* A104	3	#5	STR	33'-5"	105	A208	6	#5	STR	24'-4"	152
* A105	3	#5	STR	31'-2"	98	A209	6	#5	STR	22'-1"	138	* A105	3	#5	STR	31'-2"	98	A209	6	#5	STR	22'-1"	138	* A105	3	#5	STR	31'-2"	98	A209	6	#5	STR	22'-1"	138
* A106	3	#5	STR	28'-10"	90	A210	6	#5	STR	19'-10"	124	* A106	3	#5	STR	28'-10"	90	A210	6	#5	STR	19'-10"	124	* A106	3	#5	STR	28'-10"	90	A210	6	#5	STR	19'-10"	124
* A107	3	#5	STR	26'-7"	83	A211	6	#5	STR	17'-7"	110	* A107	3	#5	STR	26'-7"	83	A211	6	#5	STR	17'-7"	110	* A107	3	#5	STR	26'-7"	83	A211	6	#5	STR	17'-7"	110
* A108	3	#5	STR	24'-4"	76	A212	6	#5	STR	15'-4"	96	* A108	3	#5	STR	24'-4"	76	A212	6	#5	STR	15'-4"	96	* A108	3	#5	STR	24'-4"	76	A212	6	#5	STR	15'-4"	96
* A109	3	#5	STR	22'-1"	69	A213	6	#5	STR	13'-1"	82	* A109	3	#5	STR	22'-1"	69	A213	6	#5	STR	13'-1"	82	* A109	3	#5	STR	22'-1"	69	A213	6	#5	STR	13'-1"	82
* A110	3	#5	STR	19'-10"	62	A214	6	#5	STR	10'-10"	68	* A110	3	#5	STR	19'-10"	62	A214	6	#5	STR	10'-10"	68	* A110	3	#5	STR	19'-10"	62	A214	6	#5	STR	10'-10"	68
* A111	3	#5	STR	17'-7"	55	A215	6	#5	STR	8'-7"	54	* A111	3	#5	STR	17'-7"	55	A215	6	#5	STR	8'-7"	54	* A111	3	#5	STR	17'-7"	55	A215	6	#5	STR	8'-7"	54
* A112	3	#5	STR	15'-4"	48	A216	6	#5	STR	6'-4"	40	* A112	3	#5	STR	15'-4"	48	A216	6	#5	STR	6'-4"	40	* A112	3	#5	STR	15'-4"	48	A216	6	#5	STR	6'-4"	40
* A113	3	#5	STR	13'-1"	41	A217	6	#5	STR	4'-1"	26	* A113	3	#5	STR	13'-1"	41	A217	6	#5	STR	4'-1"	26	* A113	3	#5	STR	13'-1"	41	A217	6	#5	STR	4'-1"	26
* A114	3	#5	STR	10'-10"	34							* A114	3	#5	STR	10'-10"	34							* A114	3	#5	STR	10'-10"	34						
* A115	3	#5	STR	8'-7"	27	* B1	90	#4	STR	23'-3"	1398	* A115	3	#5	STR	8'-7"	27	* B1	90	#4	STR	23'-3"	1398	* A115	3	#5	STR	8'-7"	27	* B1	90	#4	STR	23'-3"	1398
* A116	3	#5	STR	6'-4"	20	* B3	106	#5	STR	34'-2"	3777	* A116	3	#5	STR	6'-4"	20	* B3	106	#5	STR	34'-2"	3777	* A116	3	#5	STR	6'-4"	20	* B3	106	#5	STR	34'-2"	3777
* A117	3	#5	STR	4'-1"	13	* B7	15	#4	STR	23'-1"	231	* A117	3	#5	STR	4'-1"	13	* B7	15	#4	STR	23'-1"	231	* A117	3	#5	STR	4'-1"	13	* B7	15	#4	STR	23'-1"	231
* A118	3	#5	STR	39'-5"	123							* A118	3	#5	STR	39'-5"	123							* A118	3	#5	STR	39'-5"	123						
* A119	3	#5	STR	37'-2"	116	* D1	150	#6	STR	5'-4"	1202	* A119	3	#5	STR	37'-2"	116	* D1	150	#6	STR	5'-4"	1202	* A119	3	#5	STR	37'-2"	116	* D1	150	#6	STR	5'-4"	1202
* A120	3	#5	STR	34'-11"	109	* D2	150	#6	STR	4'-8"	1051	* A120	3	#5	STR	34'-11"	109	* D2	150	#6	STR	4'-8"	1051	* A120	3	#5	STR	34'-11"	109	* D2	150	#6	STR	4'-8"	1051
* A121	3	#5	STR	32'-8"	102							* A121	3	#5	STR	32'-8"	102							* A121	3	#5	STR	32'-8"	102						
* A122	3	#5	STR	30'-4"	95	* G1	2	#5	STR	48'-4"	101	* A122	3	#5	STR	30'-4"	95	* G1	2	#5	STR	48'-4"	101	* A122	3	#5	STR	30'-4"	95	* G1	2	#5	STR	48'-4"	101
* A123	3	#5	STR	28'-1"	88	* G6	66	#4	STR	5'-8"	250	* A123	3	#5	STR	28'-1"	88	* G6	66	#4	STR	5'-8"	250	* A123	3	#5	STR	28'-1"	88	* G6	66	#4	STR	5'-8"	250
* A124	3	#5	STR	25'-10"	81							* A124	3	#5	STR	25'-10"	81							* A124	3	#5	STR	25'-10"	81						
* A125	3	#5	STR	23'-7"	74	* J1	84	#4	5	1'-5"	79	* A125	3	#5	STR	23'-7"	74	* J1	84	#4	5	1'-5"	79	* A125	3	#5	STR	23'-7"	74	* J1	84	#4	5	1'-5"	79
* A126	3	#5	STR	21'-4"	67							* A126	3	#5	STR	21'-4"	67							* A126	3	#5	STR	21'-4"	67						
* A127	3	#5	STR	19'-1"	60	* K3	4	#8	1	11'-5"	122	* A127	3	#5	STR	19'-1"	60	* K3	4	#8	1	11'-5"	122	* A127	3	#5	STR	19'-1"	60	* K3	4	#8	1	11'-5"	122
* A128	3	#5	STR	16'-10"	53	* K4	12	#8	2	21'-1"	676	* A128	3	#5	STR	16'-10"	53	* K4	12	#8	2	21'-1"	676	* A128	3	#5	STR	16'-10"	53	* K4	12	#8	2	21'-1"	676
* A129	3	#5	STR	14'-7"	46	* K5	4	#8	1	14'-6"	155	* A129	3	#5	STR	14'-7"	46	* K5	4	#8	1	14'-6"	155	* A129	3	#5	STR	14'-7"	46	* K5	4	#8	1	14'-6"	155
* A130	3	#5	STR	12'-4"	39	* K7	24	#6	STR	8'-11"	321	* A130	3	#5	STR	12'-4"	39	* K7	24	#6	STR	8'-11"	321	* A130	3	#5	STR	12'-4"	39	* K7	24	#6	STR	8'-11"	321
* A131	3	#5	STR	10'-1"	32							* A131	3	#5	STR	10'-1"	32							* A131	3	#5	STR	10'-1"	32						
* A132	3	#5	STR	7'-10"	25	* S1	64	#5	3	4'-10"	323	* A132	3	#5	STR	7'-10"	25	* S1	64	#5	3	4'-10"	323	* A132	3	#5	STR	7'-10"	25	* S1	64	#5	3	4'-10"	323
* A133	3	#5	STR	5'-7"	17	* S2	32	#4	4	4'-4"	93	* A133	3	#5	STR	5'-7"	17	* S2	32	#4	4	4'-4"	93	* A133	3	#5	STR	5'-7"	17	* S2	32	#4	4	4'-4"	93
* A134	3	#5	STR	3'-4"	10	* S4	32	#4	4	3'-2"	68	* A134	3	#5	STR	3'-4"	10	* S4	32	#4	4	3'-2"	68	* A134	3	#5	STR	3'-4"	10	* S4	32	#4	4	3'-2"	68
						* U1	20	#4	7	3'-4"	45							* U1	20	#4	7	3'-4"	45												
A201	6	#5	STR	40'-1"	251							A201	6	#5	STR	40'-1"	251							A201	6	#5	STR	40'-1"	251						
A202	6	#5	STR	37'-10"	237							A202	6	#5	STR	37'-10"	237							A202	6	#5	STR	37'-10"	237						

REINFORCING STEEL	LBS.	11,836
* EPOXY COATED REINFORCING STEEL	LBS.	11,774

REINFORCING STEEL	LBS.	21,885
* EPOXY COATED REINFORCING STEEL	LBS.	19,366

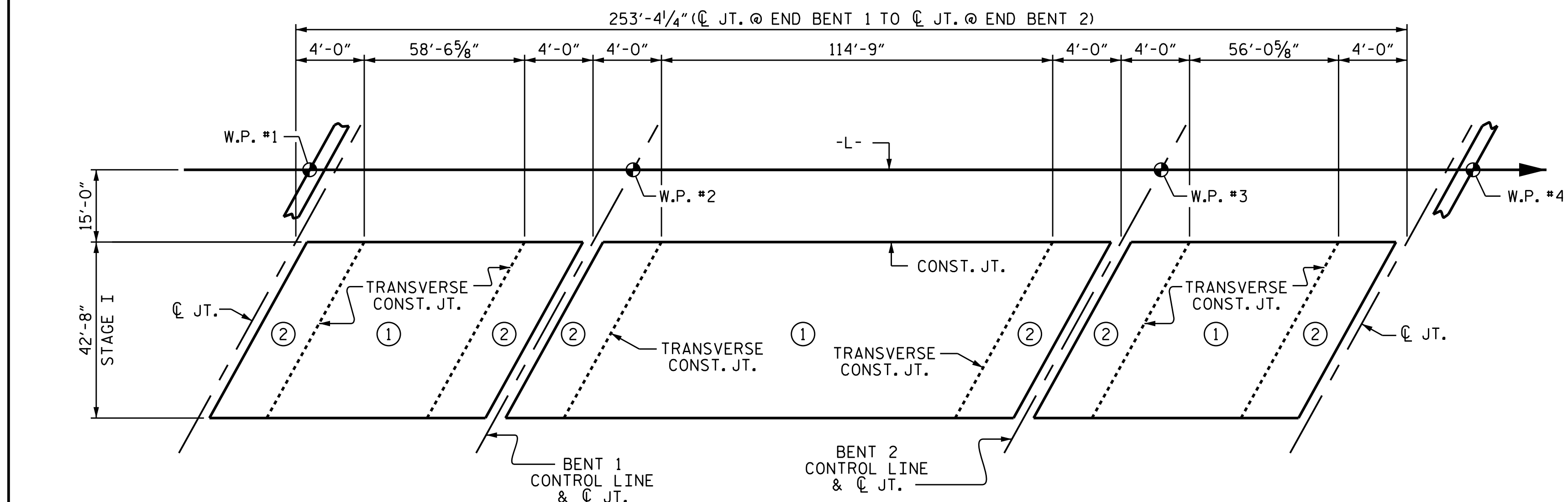
REINFORCING STEEL	LBS.	11,310
* EPOXY COATED REINFORCING STEEL	LBS.	11,359



	CLASS AA CONCRETE			REINFORCING STEEL (LBS.)	EPOXY COATED REINFORCING STEEL (LBS.)
	(CU. YDS.)				
	POUR #1	POUR #2	SIWALK		
SPAN A	82.8	15.4	8.2	11,836	11,774
SPAN B	162.6	12.7	15.2	21,885	19,366
SPAN C	79.2	15.4	7.9	11,310	11,359
TOTALS **	324.6	43.5	31.3	45,031	42,499

** QUANTITIES FOR CLASSIC RAIL ARE NOT INCLUDED

	SO.FT.
APPROACH SLABS	1,560
BRIDGE DECK	
SPAN A	2,155
SPAN B	4,007
SPAN C	2,072
TOTAL	9,794



POURING SEQUENCE

DRAWN BY: T. H. CARROLL DATE: 07/14/14
 CHECKED BY: K. D. LAYNE DATE: 11/25/14
 DESIGN ENGINEER OF RECORD: V. A. PATEL DATE: 1/5/15

18-FEB-2015 14:03
 R:\Structures\Plans\B5136.SD.BM.01.dgn
 thcarroll



PROJECT NO. B-5136
 CABARRUS COUNTY
 STATION: 21+74.92 -L-

REVISIONS				SHEET NO.
NO.	BY:	DATE:	NO.	
1			3	S-46
2			4	

TOTAL SHEETS: 75