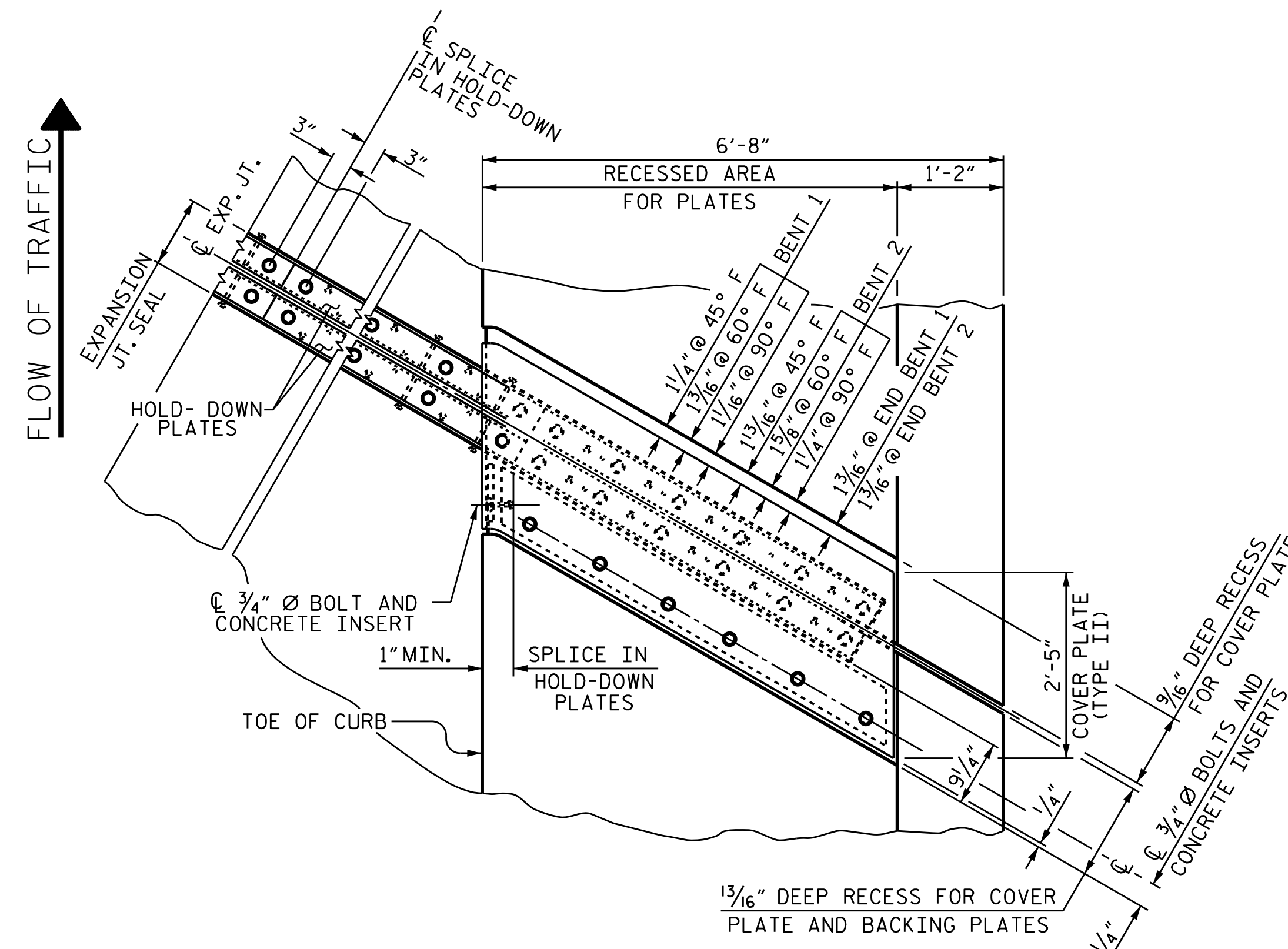
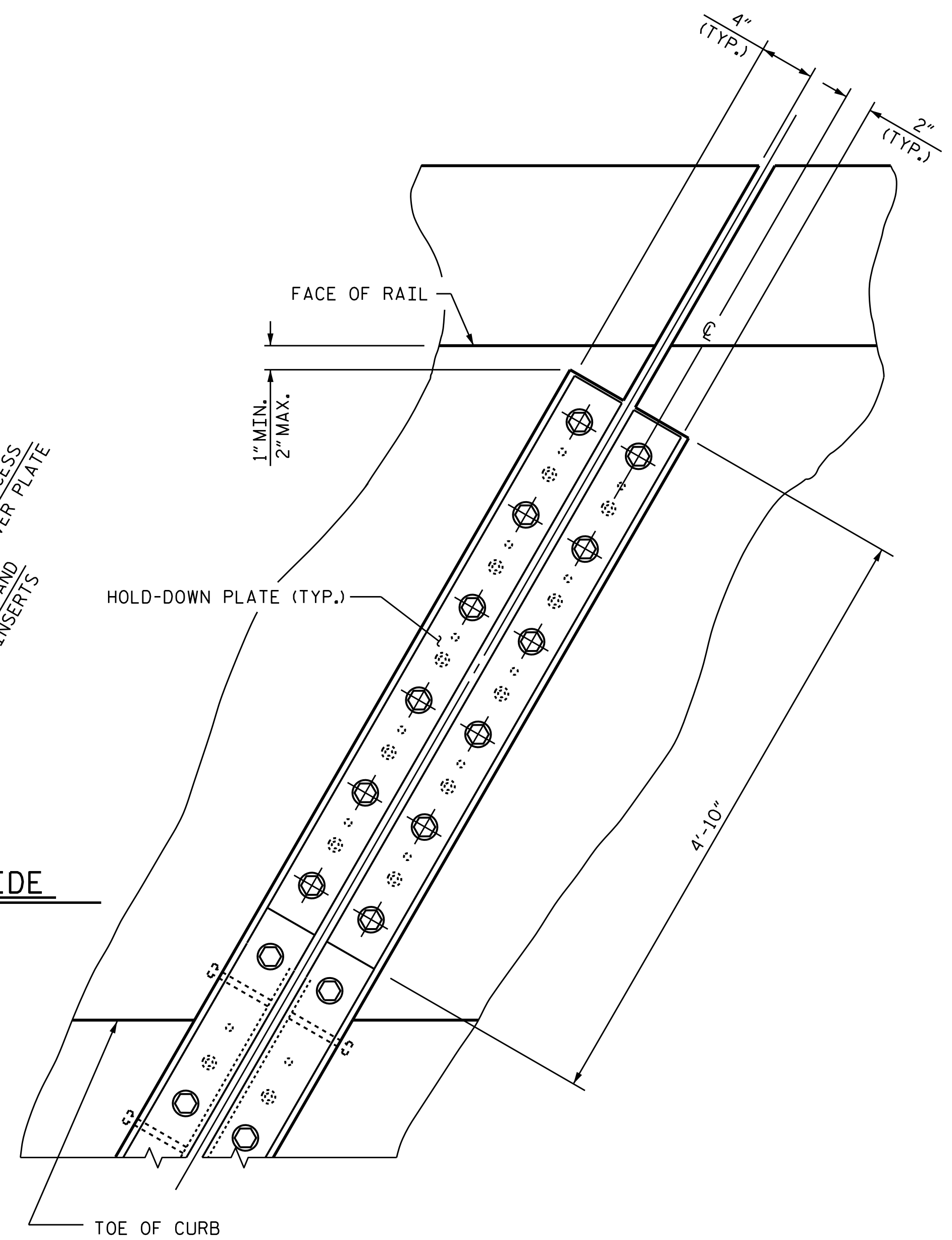


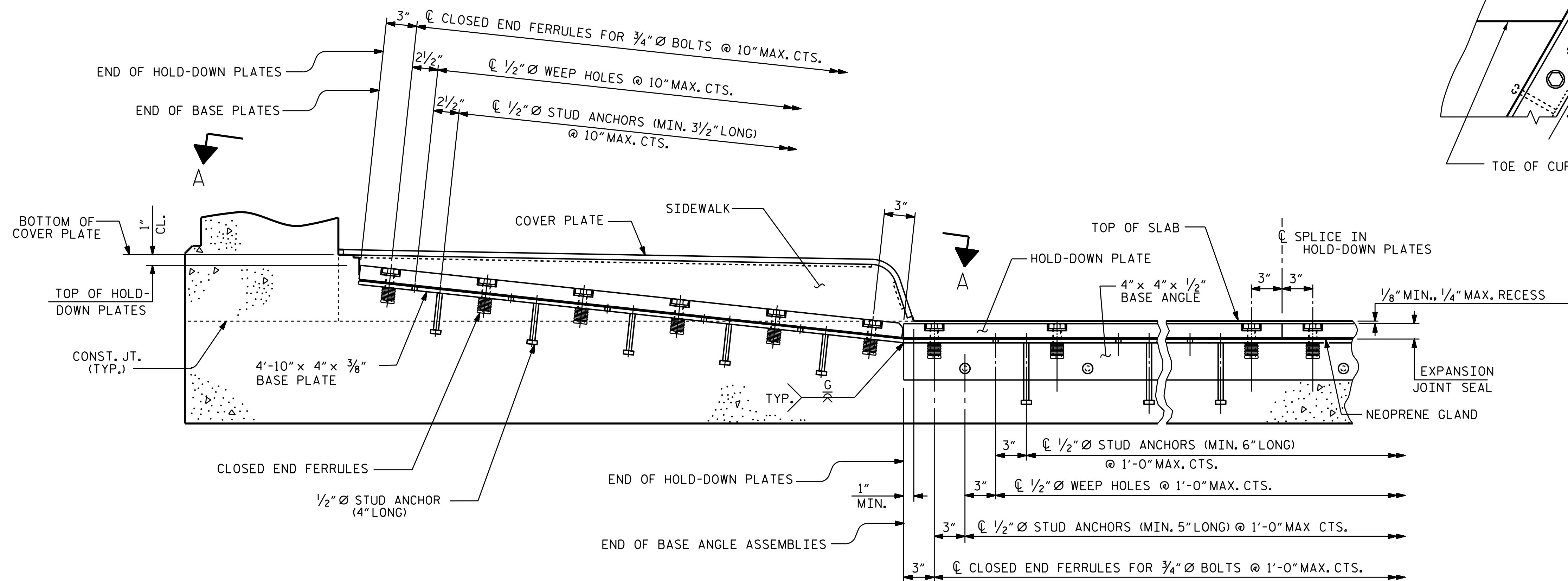
PLAN OF EXPANSION JOINT SEAL - LEFT SIDE



PLAN OF EXPANSION JOINT SEAL - RIGHT SIDE



SECTION A - A



SECTION THRU SIDEWALK NORMAL TO JOINT

COVER PLATE BOLTS NOT SHOWN FOR CLARITY.

PROJECT NO. B-5136
CABARRUS COUNTY
 STATION: 21+74.92 -L-

SHEET 2 OF 3



STATE OF NORTH CAROLINA
 DEPARTMENT OF TRANSPORTATION
 RALEIGH
 STANDARD
 EXPANSION JOINT
 SEAL DETAILS
 FOR SIDEWALK

ASSEMBLED BY : T. H. CARROLL DATE : 7/14/14
 CHECKED BY : H. A. LOCKLEAR DATE : 10/15/14
 DRAWN BY : REK 10/87
 CHECKED BY : CRK 1/88

DESIGN ENGINEER OF RECORD:
 V.A. PATEL DATE : 1/05/15

18-FEB-2015 14:03
 R:\Structures\Plans\B5136.SD.JS.01.dgn
 thcarroll

REVISIONS						SHEET NO.
NO.	BY:	DATE:	NO.	BY:	DATE:	S-44
1			3			TOTAL SHEETS
2			4			75

STD. NO. EJS3