

NOTES

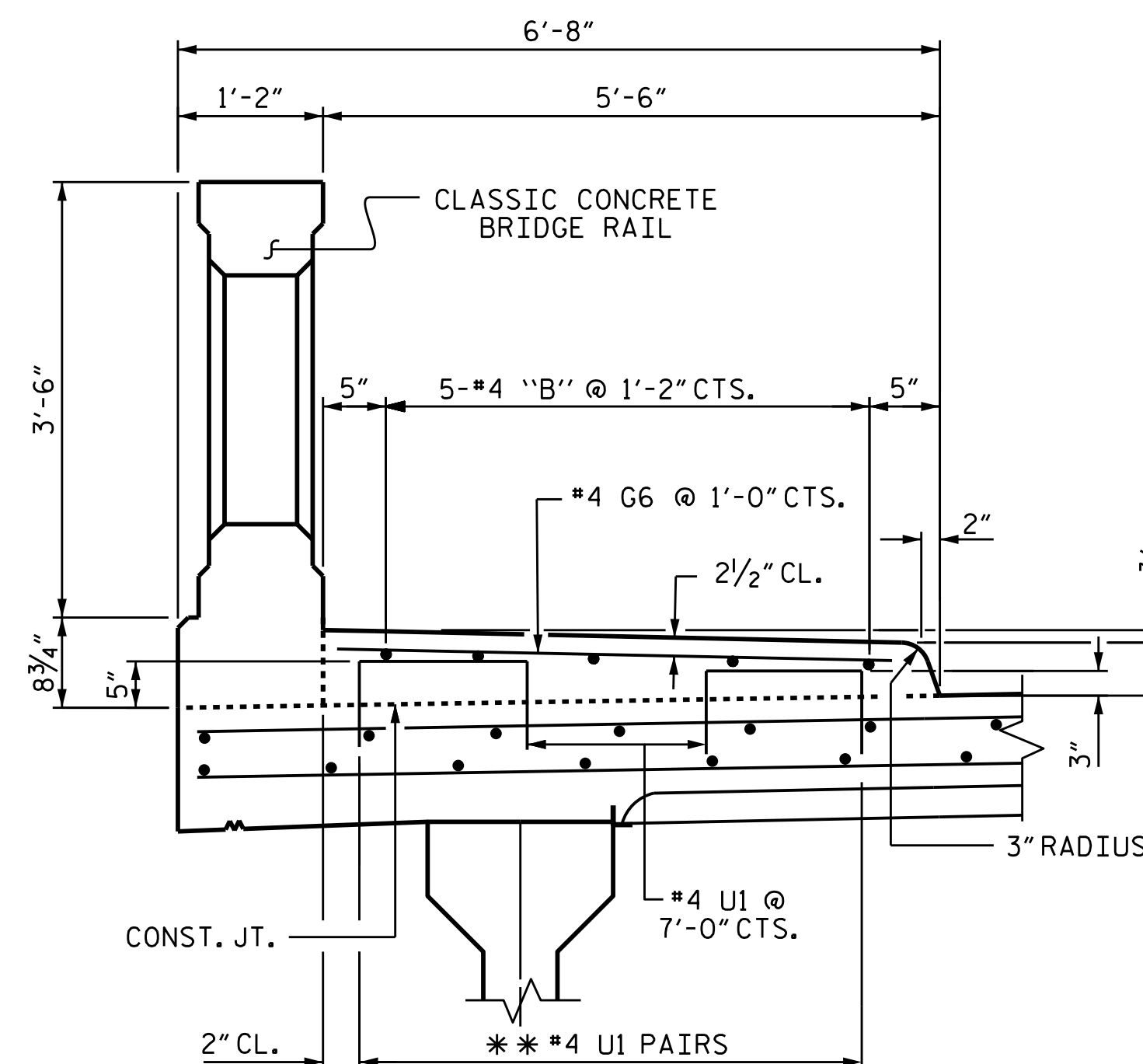
SIDEWALK IN EACH SPAN SHALL NOT BE CAST UNTIL ALL SLAB CONCRETE IN THE SPAN HAS BEEN CAST AND HAS REACHED A MINIMUM COMPRESSIVE STRENGTH OF 3,000 PSI.

GROOVED CONTRACTION JOINTS, 1/2" IN DEPTH, SHALL BE TOOLED IN ALL EXPOSED FACES OF THE SIDEWALK AND MONOLITHIC CONCRETE ISLAND IN ACCORDANCE WITH ARTICLE 825-10(B) OF THE STANDARD SPECIFICATIONS. THE CONTRACTION JOINTS SHALL BE LOCATED AT A SPACING OF 8 FT. TO 10 FT. BETWEEN EXPANSION JOINTS. NO CONTRACTION JOINT WILL BE REQUIRED FOR SEGMENTS LESS THAN 10 FT. IN LENGTH.

ALL REINFORCING STEEL IN SIDEWALK & MONOLITHIC CONCRETE ISLAND SHALL BE EPOXY COATED.

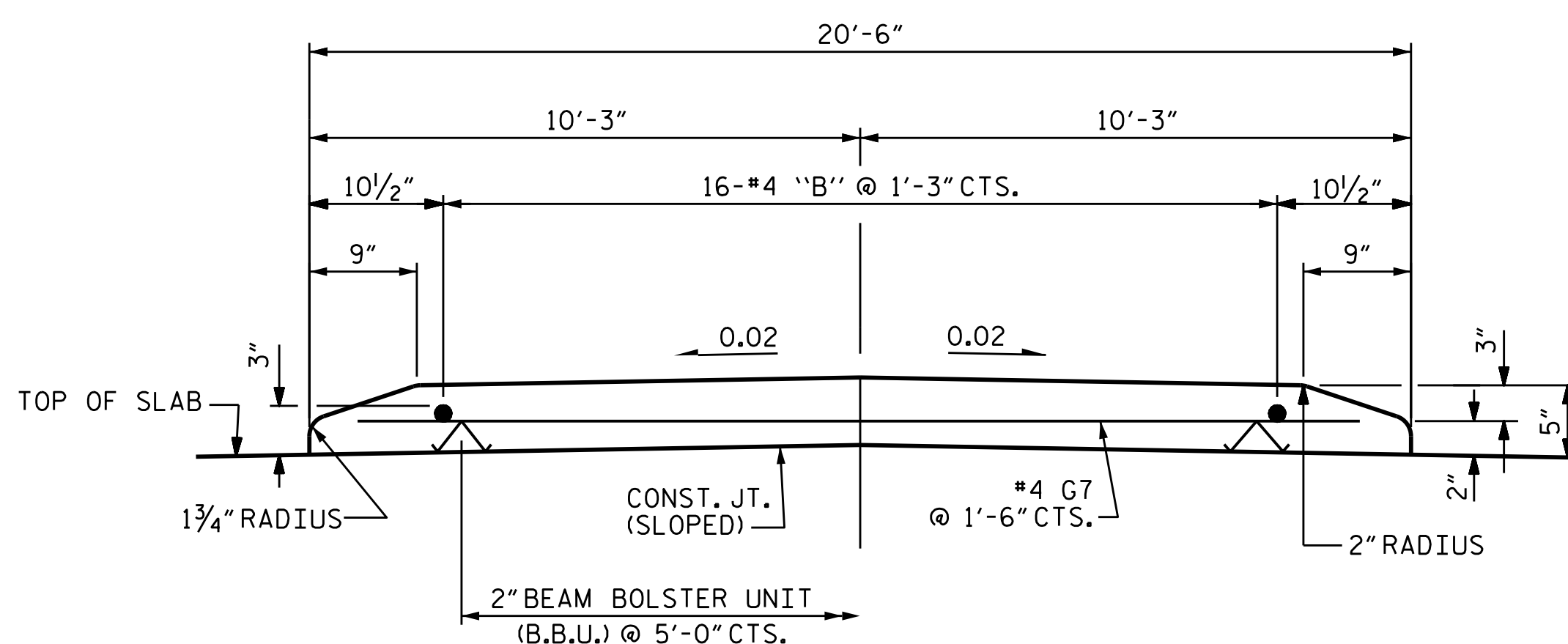
SEE "EXPANSION JOINT SEAL DETAILS FOR SIDEWALK" SHEETS FOR COVER PLATE DETAILS.

FOR SIDEWALK AND MONOLITHIC CONCRETE ISLAND ON APPROACH SLAB, SEE APPROACH SLAB DETAILS.

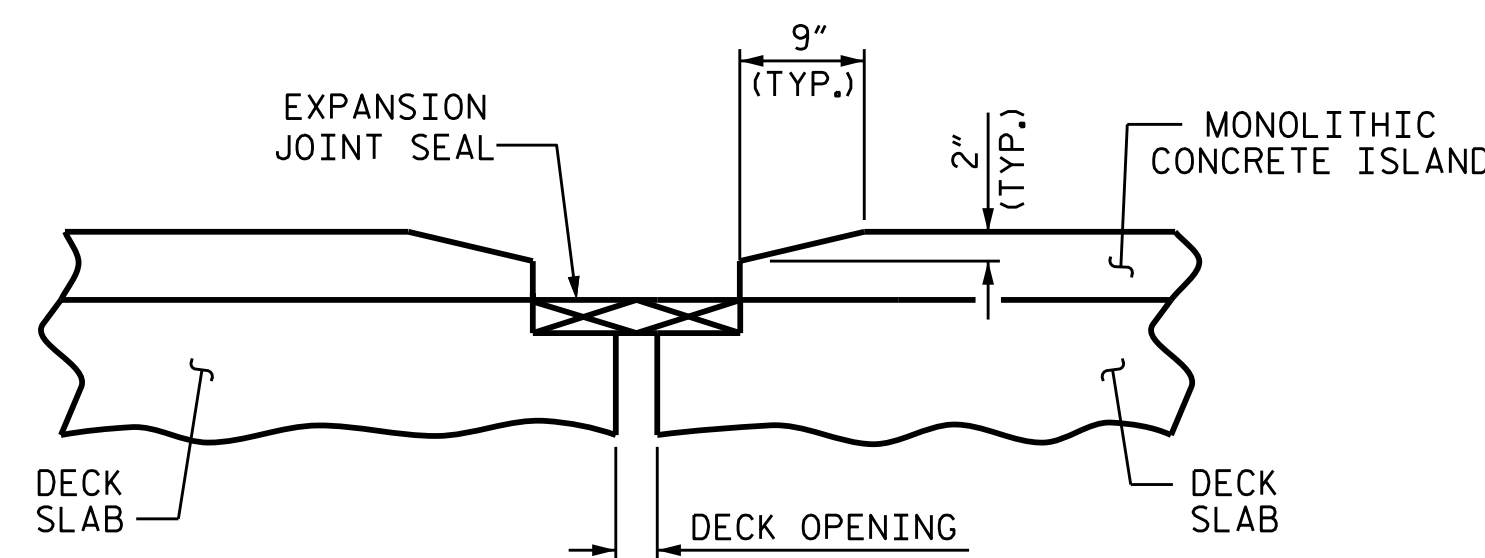


SECTION THROUGH SIDEWALK

** #4 U1 MAY BE PUSHED INTO GREEN CONCRETE AFTER SPAN HAS BEEN SCREEDED OFF



SECTION THROUGH MONOLITHIC CONCRETE ISLAND



SECTION THROUGH MONOLITHIC CONCRETE ISLAND AT EXP. JOINT SEALS

BENTS SHOWN, END BENTS SIMILAR

PROJECT NO. B-5136
CABARRUS COUNTY
 STATION: 21+74.92 -L-

SHEET 2 OF 2

STATE OF NORTH CAROLINA
 DEPARTMENT OF TRANSPORTATION
 RALEIGH
 SUPERSTRUCTURE
 SIDEWALK &
 MONOLITHIC
 CONCRETE ISLAND
 DETAILS

REVISIONS						SHEET NO.
NO.	BY:	DATE:	NO.	BY:	DATE:	TOTAL SHEETS
1			3			75
2			4			



DRAWN BY : J. D. HAWK DATE : 7/28/14
 CHECKED BY : T. H. CARROLL DATE : 10/8/14
 DESIGN ENGINEER OF RECORD: V. A. PATEL DATE : 1/5/15