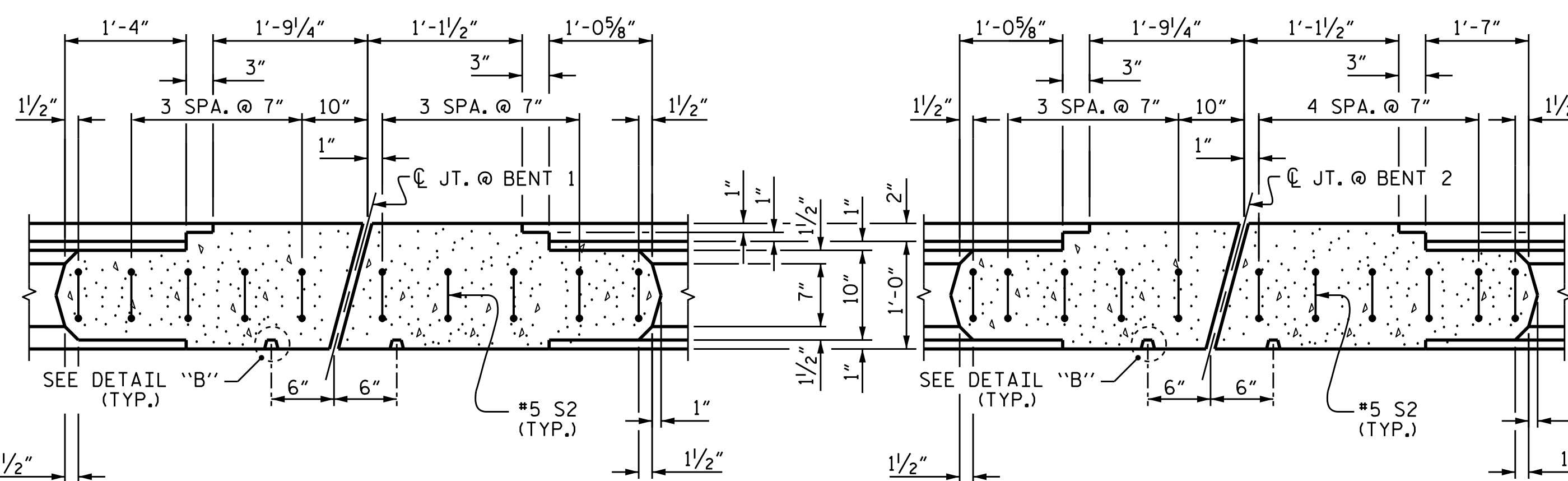


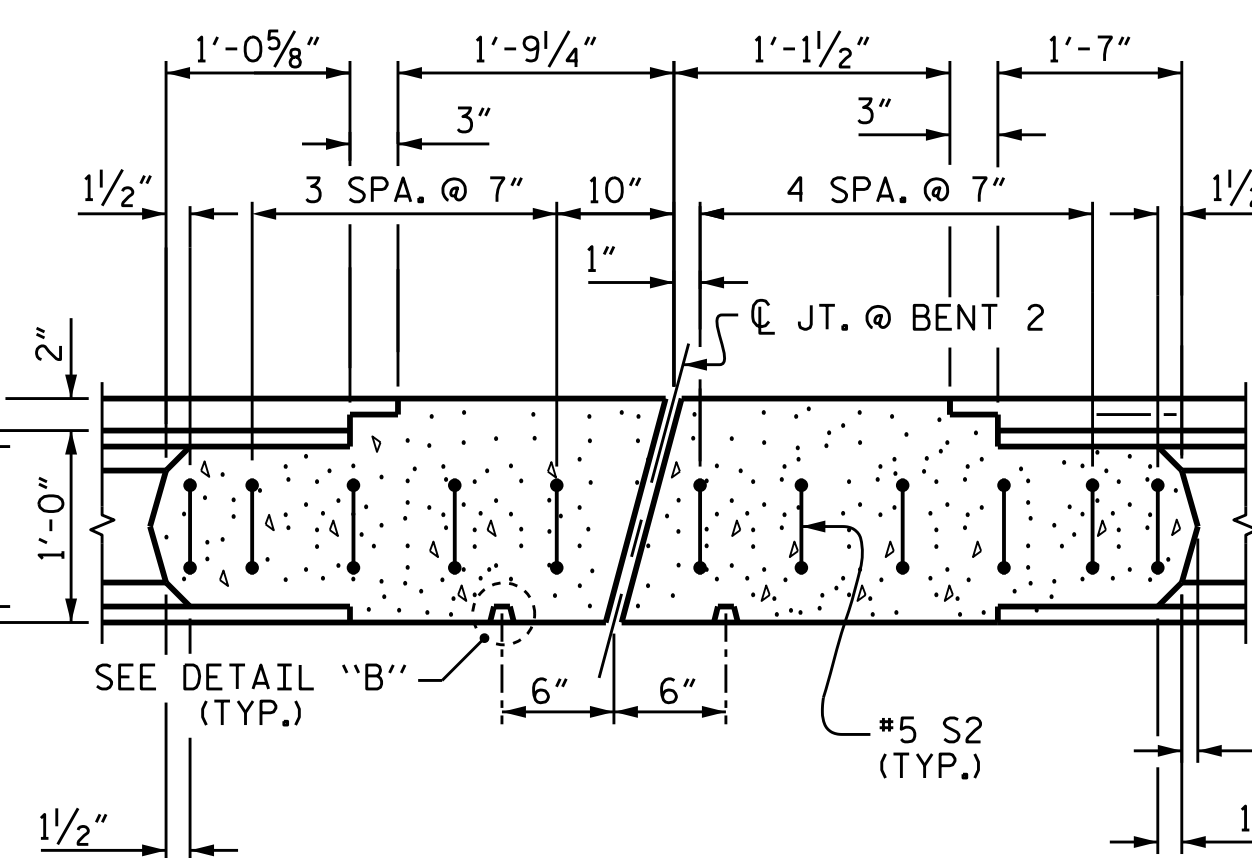
SECTION A-A

SHOWING PILASTER @ END BENT 1
(STAGE III)



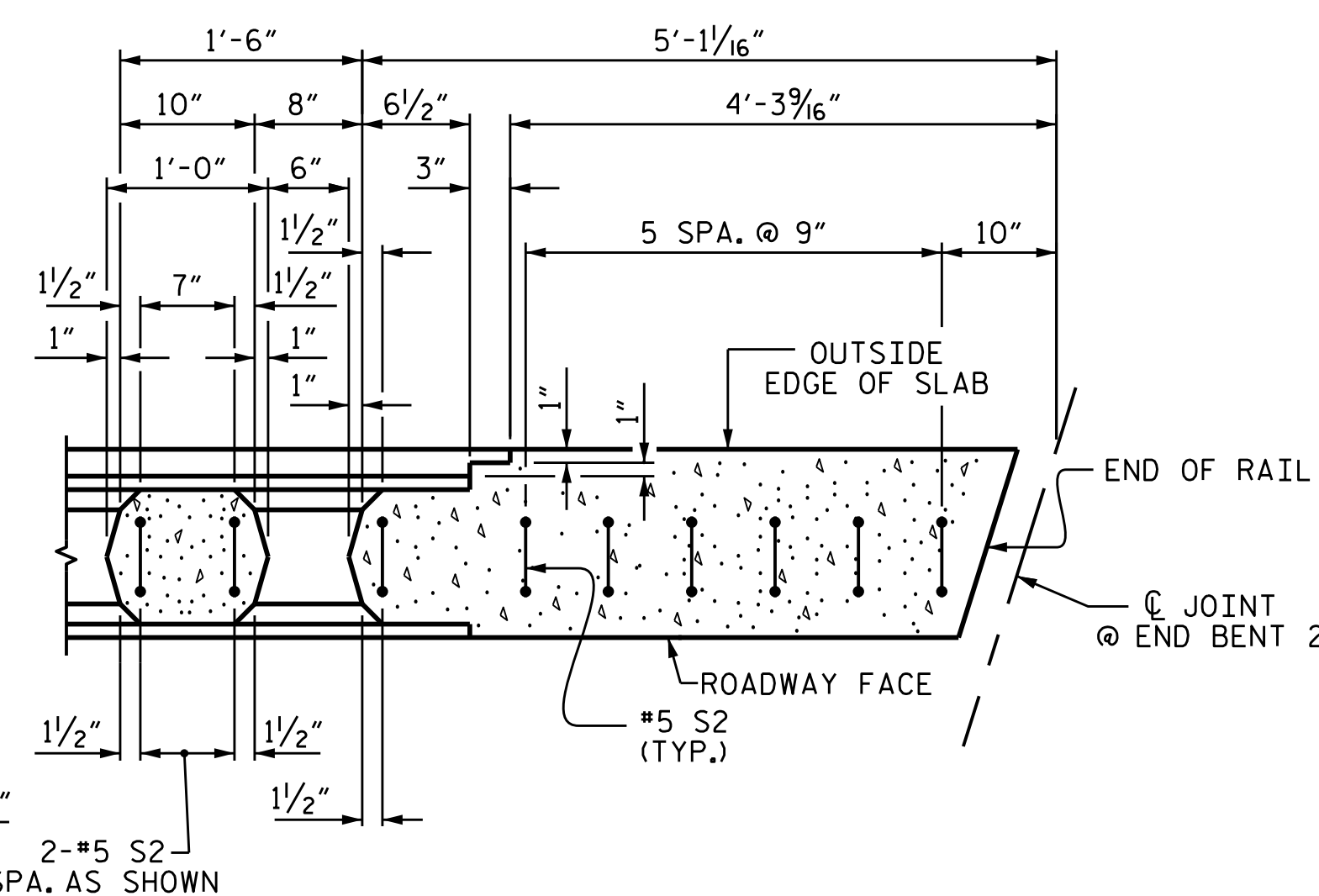
SECTION C-C

SHOWING JOINT IN PILASTER @ BENT 1
(STAGE III)



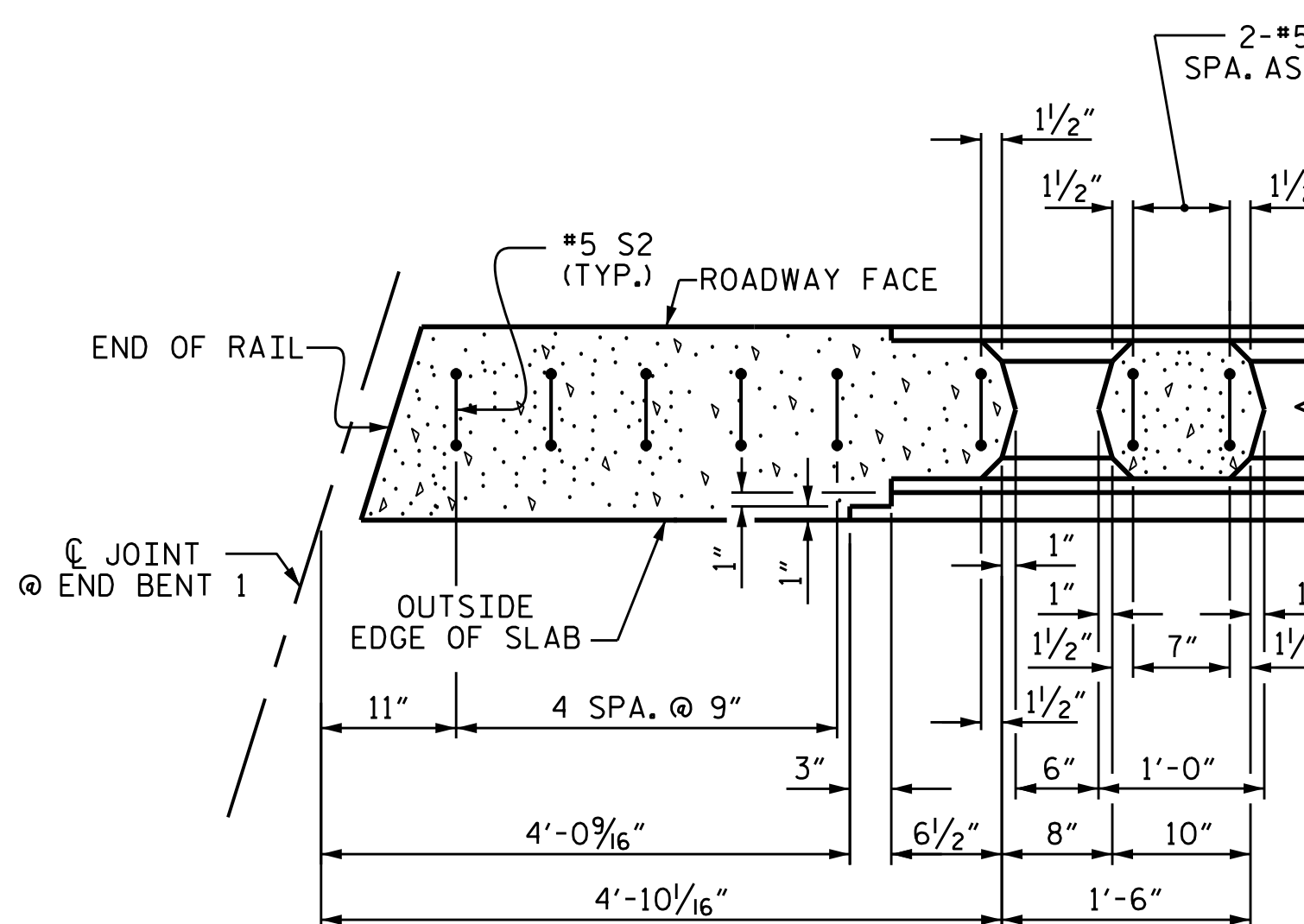
SECTION D-D

SHOWING JOINT IN PILASTER @ BENT 2
(STAGE III)



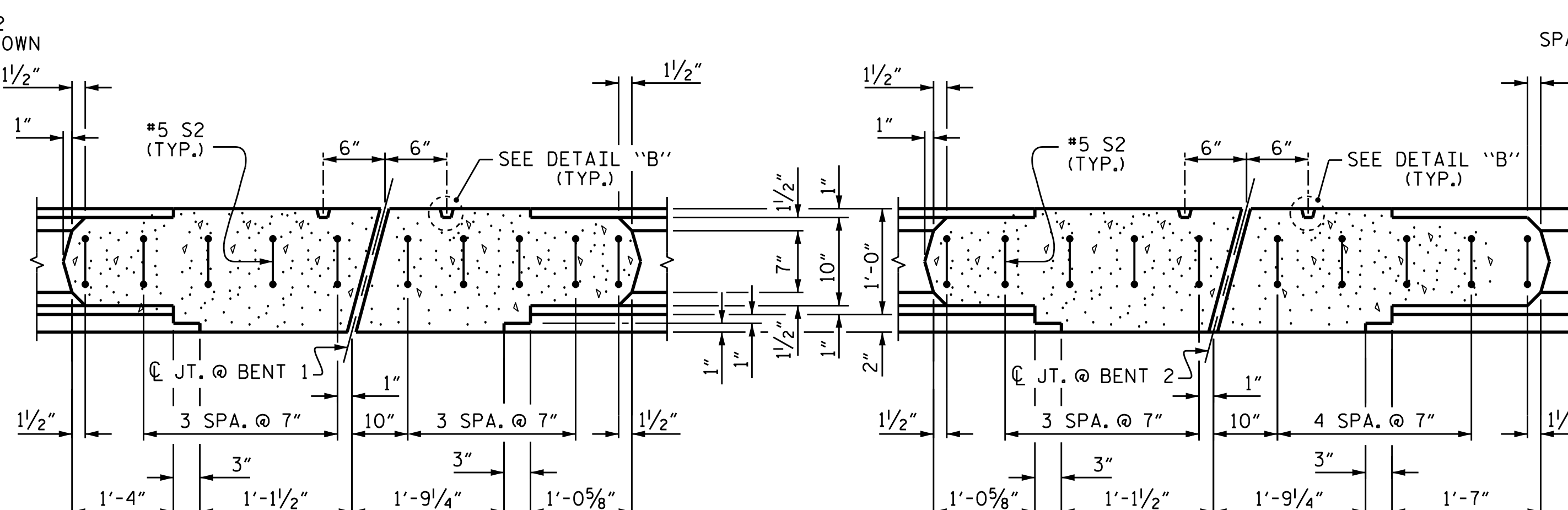
SECTION E-E

SHOWING PILASTER @ END BENT 2
(STAGE III)



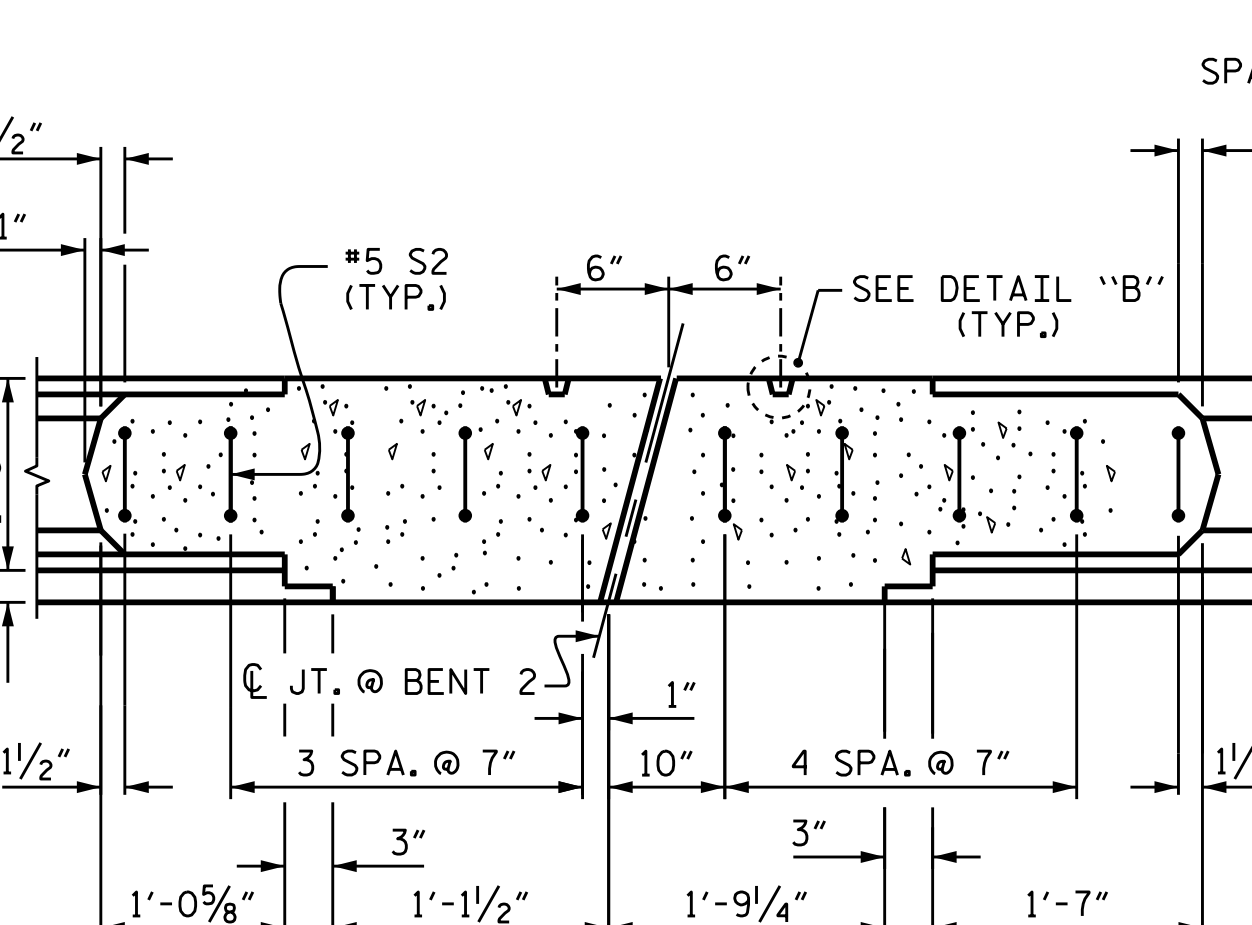
SECTION A-A

SHOWING PILASTER @ END BENT 1
(STAGE I)



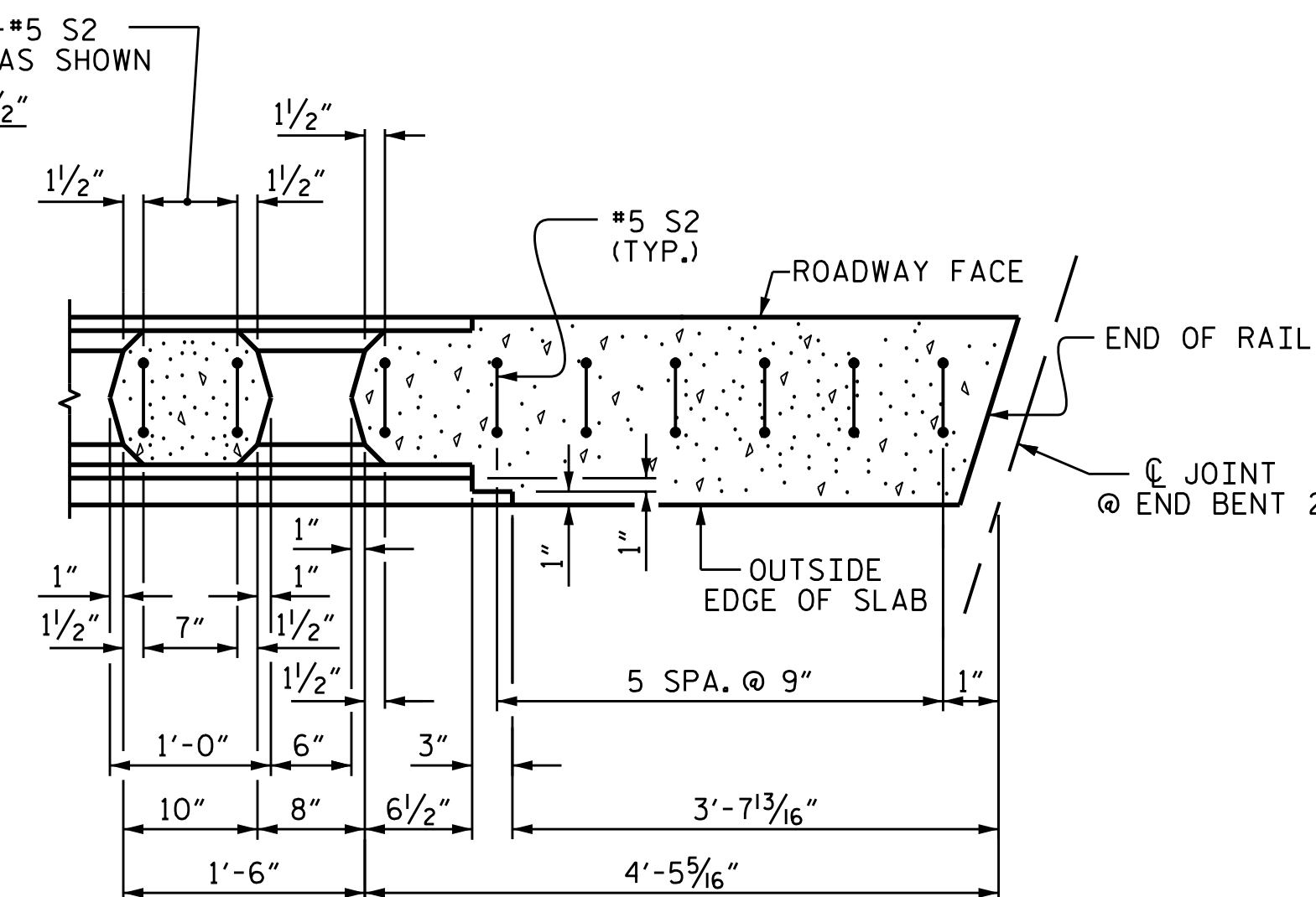
SECTION C-C

SHOWING JOINT IN PILASTER @ BENT 1
(STAGE I)



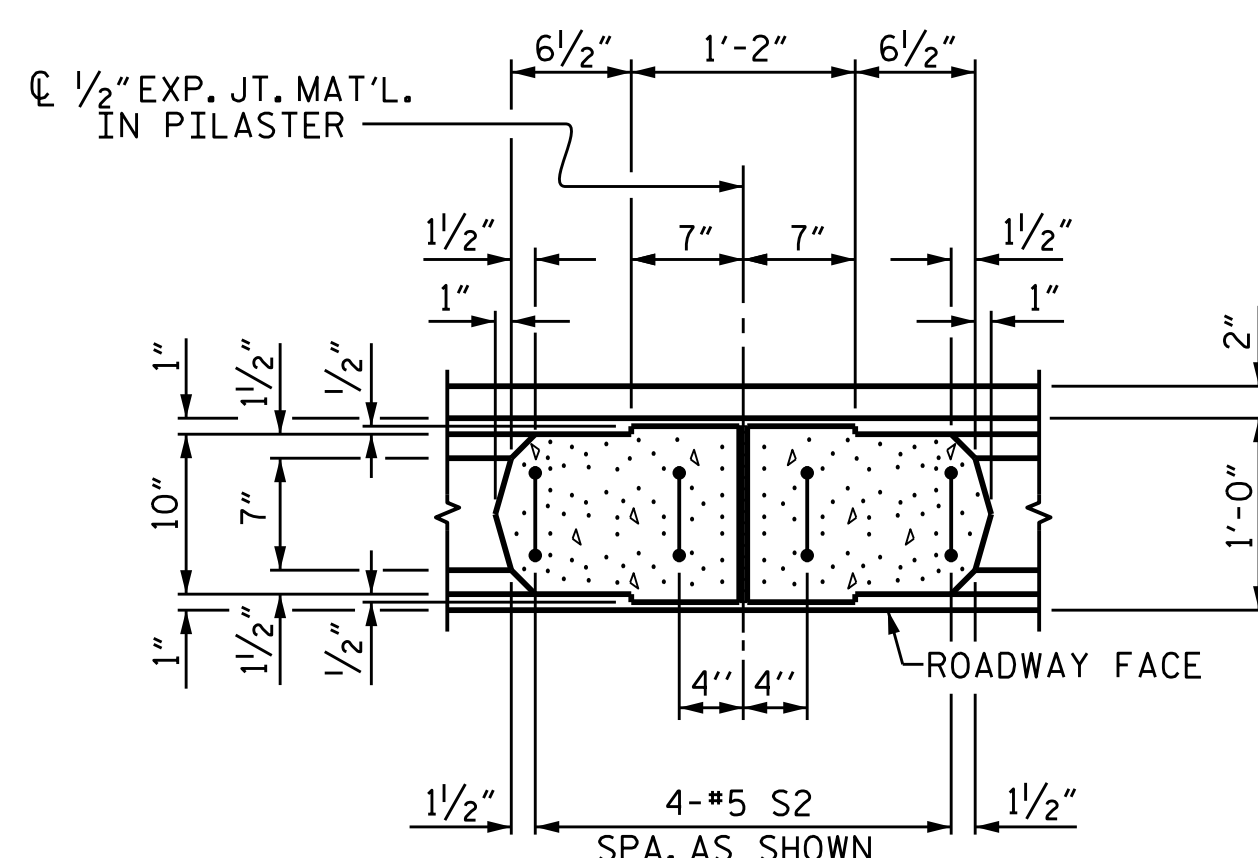
SECTION D-D

SHOWING JOINT IN PILASTER @ BENT 2
(STAGE I)



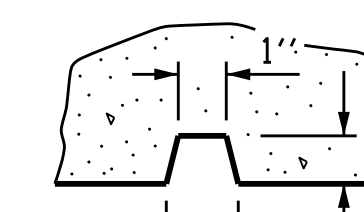
SECTION E-E

SHOWING PILASTER @ END BENT 2
(STAGE I)



SECTION B-B

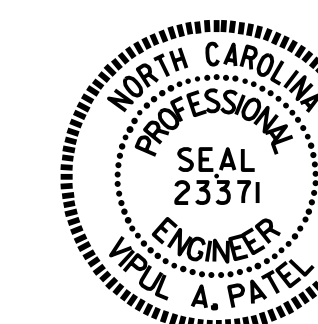
SHOWING JOINT IN PILASTER
(STAGE III SHOWN, STAGE I
SIMILAR BY ROTATION.)



DETAIL "B"
TYPICAL FLUTE

PROJECT NO. B-5136
CABARRUS COUNTY
STATION: 21+74.92 -L-

SHEET 2 OF 5



STATE OF NORTH CAROLINA
DEPARTMENT OF TRANSPORTATION
RALEIGH
SUPERSTRUCTURE
CLASSIC CONCRETE
BRIDGE RAIL WITH
SIDEWALK

REVISIONS						SHEET NO. S-36
NO.	BY:	DATE:	NO.	BY:	DATE:	
1			3			TOTAL SHEETS 75
2			4			

DRAWN BY : T. H. CARROLL DATE : 7/31/14
CHECKED BY : P. S. ADKINS DATE : 8/12/14
DESIGN ENGINEER OF RECORD: V. A. PATEL DATE : 1/5/15

18-FEB-2015 14:03
R:\Structures\Plans\B5136.SD_BR_01.dgn
thcarroll