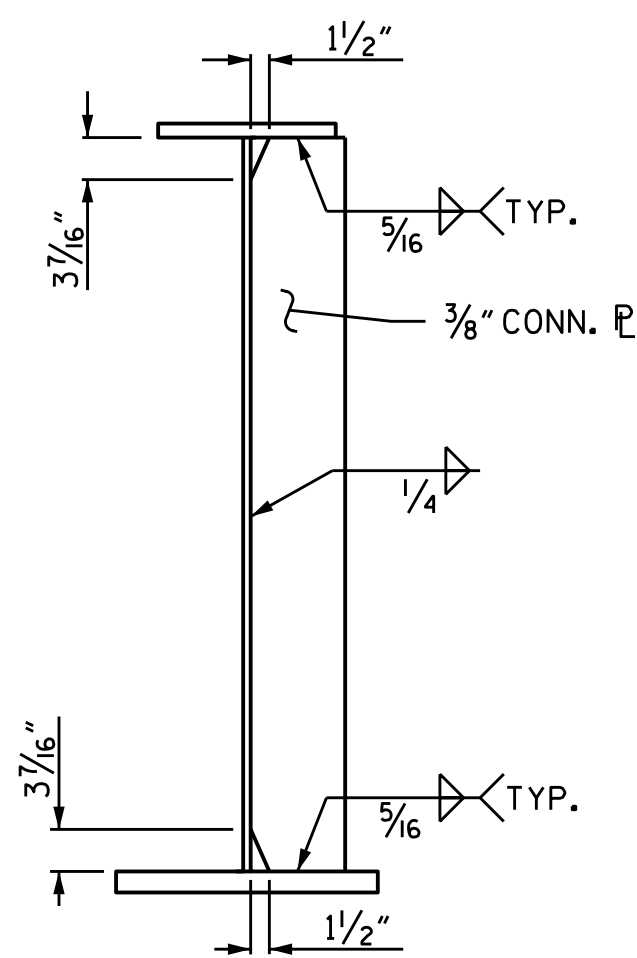
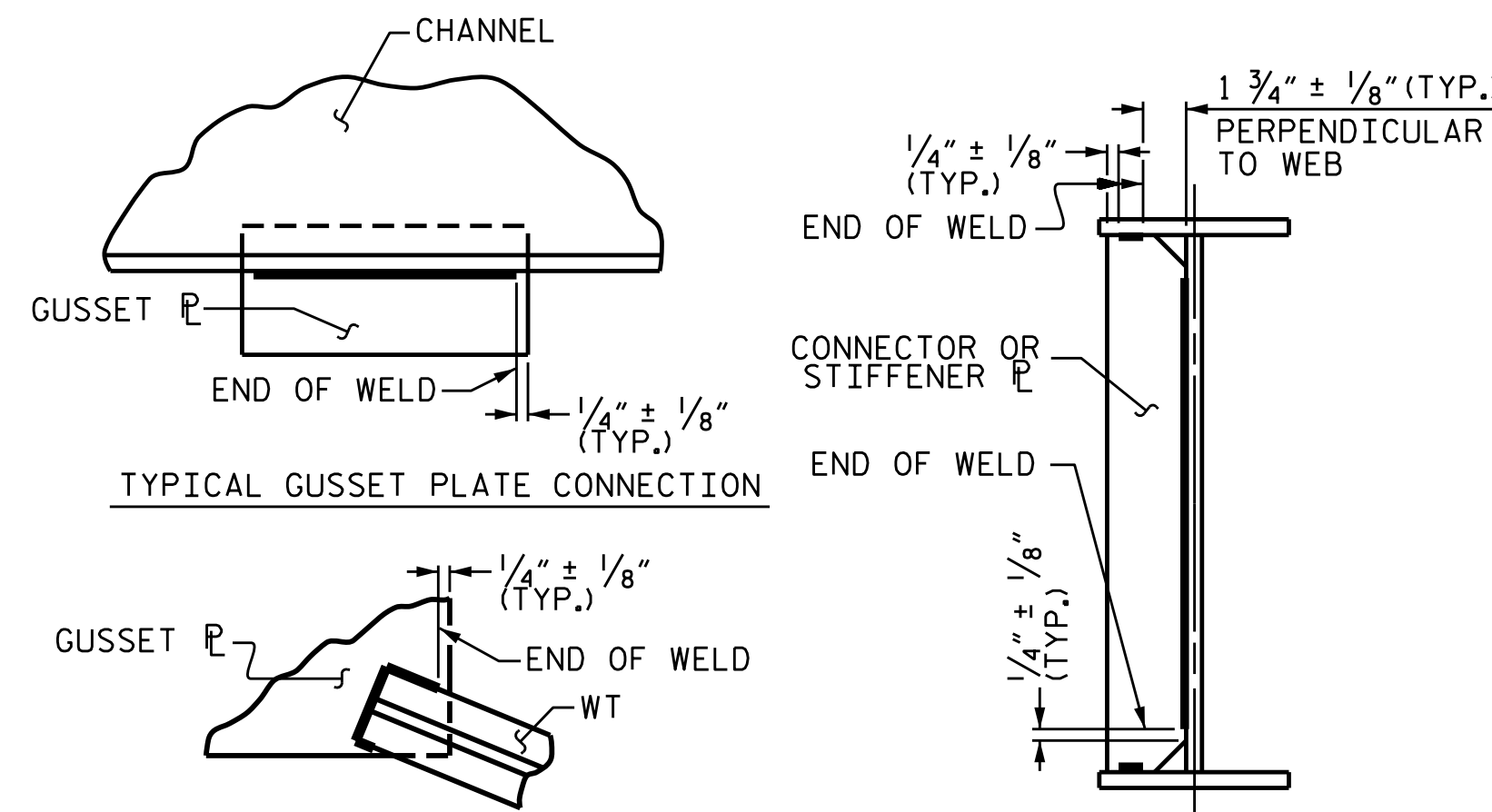


**BEARING STIFFENER
PLATE DETAIL**

*WELD ONLY WHEN USED AS CONNECTOR PLATE.
BEARING STIFFENER MAY REQUIRE COPING IF WIDER
THAN BOTTOM FLANGE.



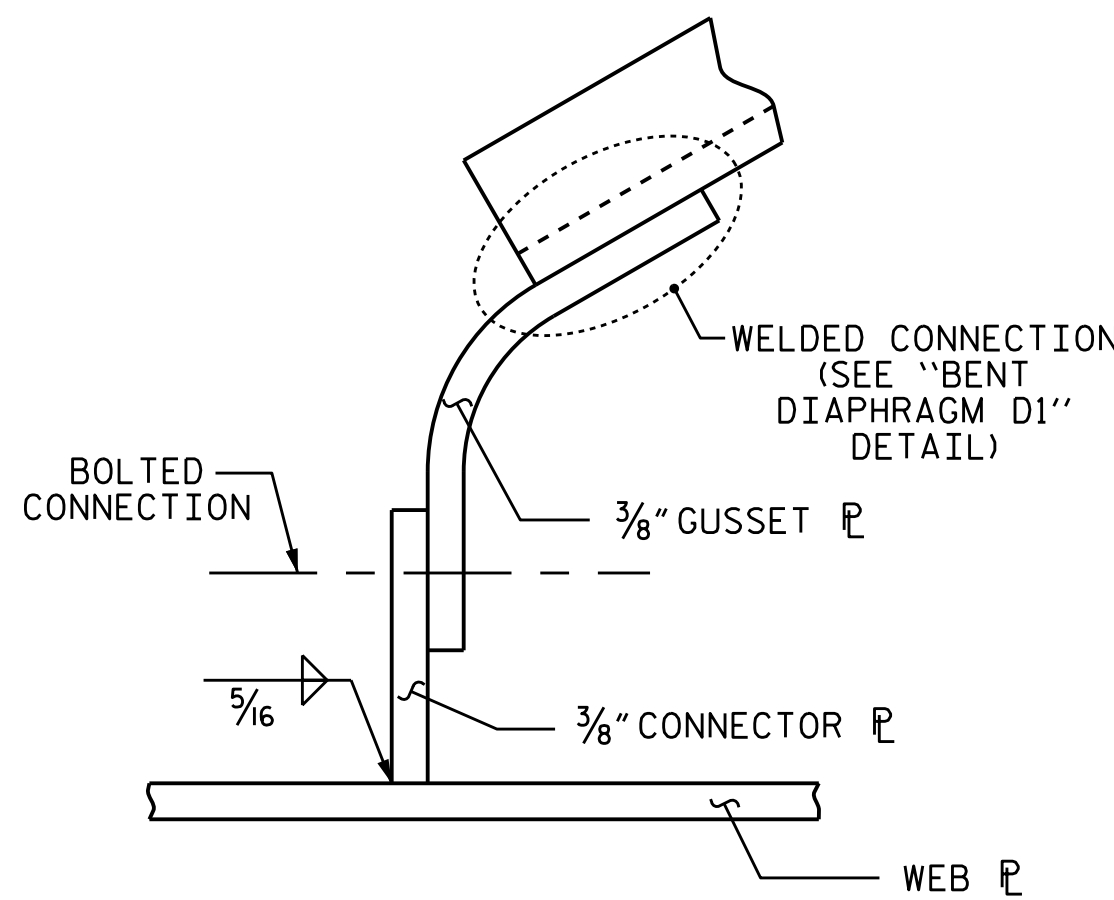
**CONNECTOR
PLATE DETAIL**



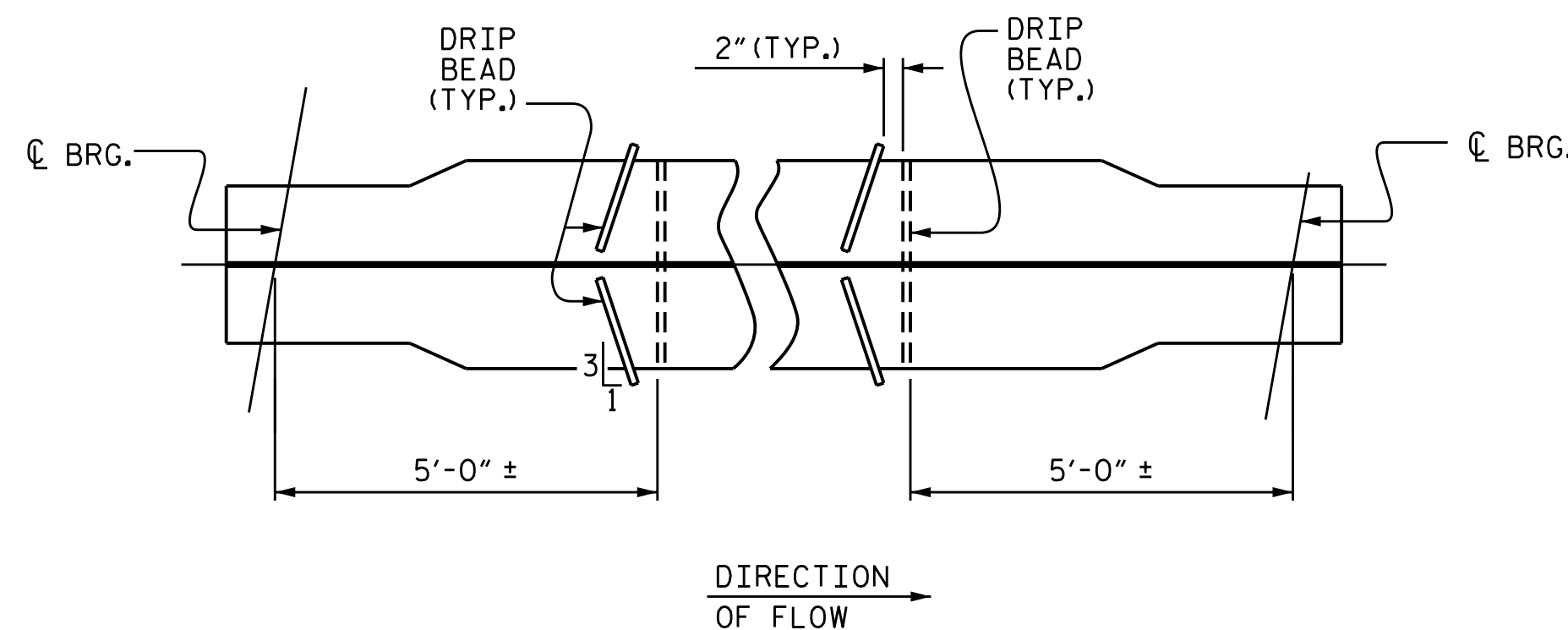
**TYPICAL "TEE"
TO GUSSET
PLATE CONNECTION**

**TYPICAL STIFFENER
OR CONNECTOR
PLATE CONNECTION**

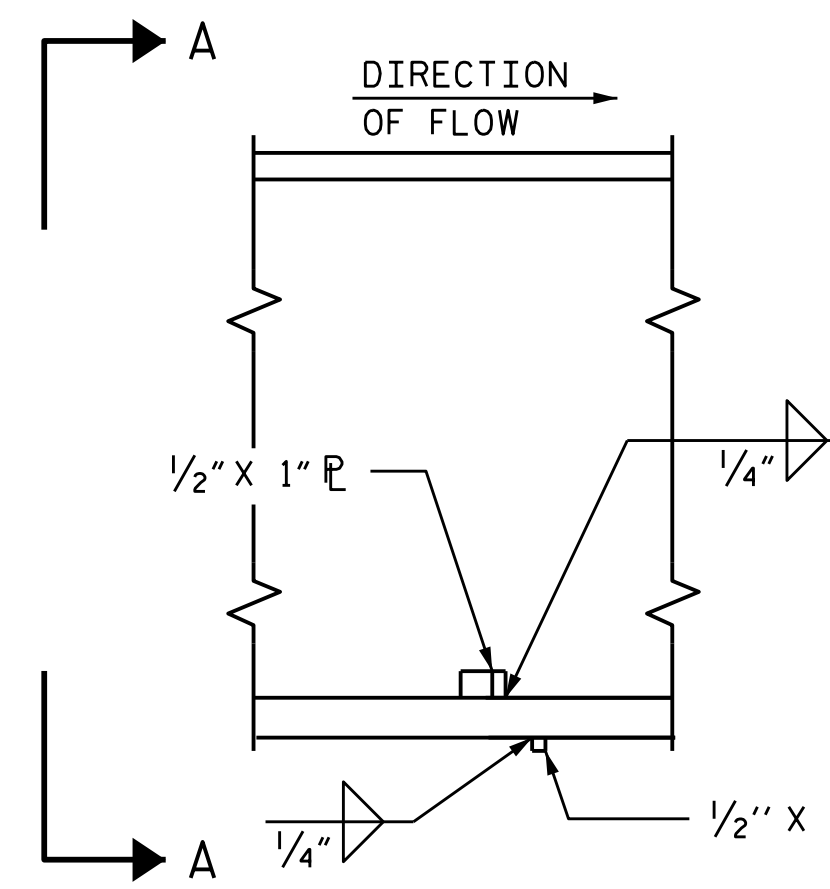
WELD TERMINATION DETAILS



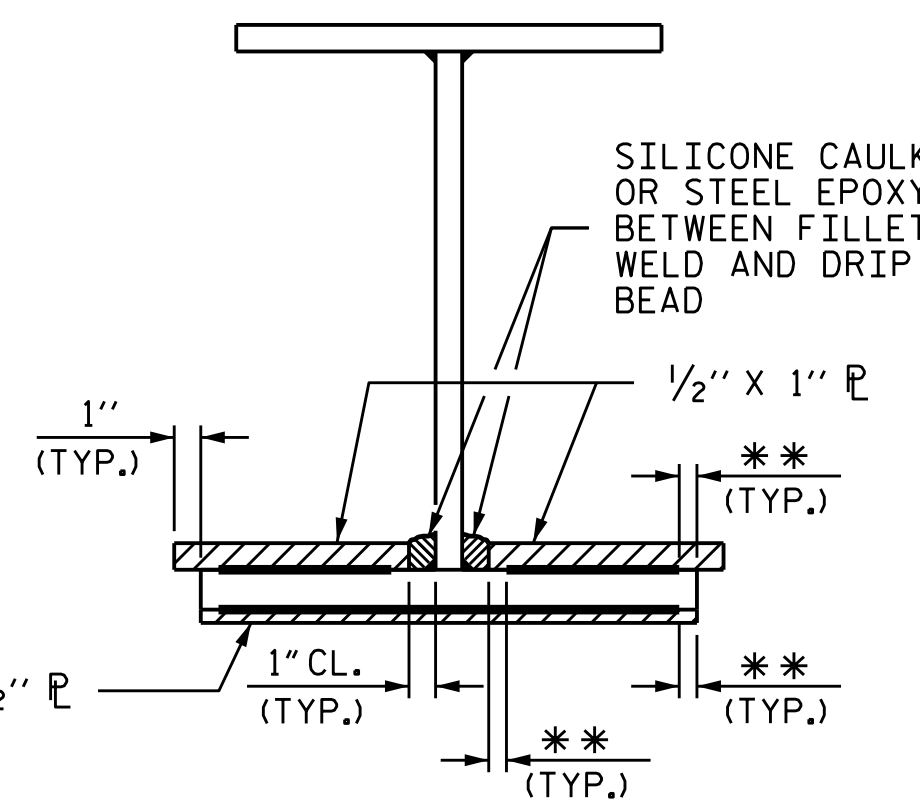
WELD DETAIL FOR GUSSET



PART PLAN - BOTTOM FLANGE



SECTION



VIEW A-A

**SEE "WELD TERMINATION DETAILS"

DRIP BEAD DETAILS

NOTES

ALL STRUCTURAL STEEL SHALL BE AASHTO M270 GRADE 50W AND PAINTED IN ACCORDANCE WITH SYSTEM 4 OF ARTICLE 442-7 OF THE STANDARD SPECIFICATIONS UNLESS OTHERWISE NOTED ON THE PLANS.

ALL DIMENSIONS SHOWN ARE HORIZONTAL OR VERTICAL, UNLESS OTHERWISE NOTED.

ALL FIELD CONNECTIONS TO BE 7/8" DIA. HIGH STRENGTH BOLTS UNLESS OTHERWISE NOTED.

BEARING STIFFENERS ARE TO BE PLACED NORMAL TO THE WEB OF THE GIRDER AND SHALL BE PLUMB.

A CHARPY V-NOTCH TEST IS REQUIRED FOR WEB PLATES, BOTTOM FLANGE PLATES, BOTTOM FLANGE SPLICE PLATES, AND WEB SPLICE PLATES (IF USED) FOR ALL GIRDERS AND IN ACCORDANCE WITH ARTICLE 1072-7 OF THE STANDARD SPECIFICATIONS.

PERMITTED FLANGE AND WEB SHOP SPLICES SHALL NOT BE LOCATED WITHIN 15 FEET OF MAXIMUM DEAD LOAD DEFLECTION. KEEP 2 FEET MINIMUM BETWEEN WEB AND FLANGE SHOP SPLICES. KEEP 6" MINIMUM BETWEEN CONNECTOR PLATE OR TRANSVERSE STIFFENER WELDS AND WEB OR FLANGE SHOP SPLICES.

STUDS ON GIRDERS MAY BE SHIFTED UP TO 1" IF NECESSARY TO CLEAR FLANGE SPLICE WELD.

TENSION ON THE ASTM A325 BOLTS SHALL BE CALIBRATED USING DIRECT TENSION INDICATOR WASHERS IN ACCORDANCE WITH ARTICLE 440-8 OF THE STANDARD SPECIFICATIONS.

END OF GIRDERS SHALL BE PLUMB.

FABRICATORS SHALL DETAIL DIAPHRAGM MEMBERS AND CONNECTIONS FOR STEEL DEAD LOAD FIT UP.

PROJECT NO. B-5136
CABARRUS COUNTY
STATION: 21+74.92 -L-

SHEET 3 OF 3

STATE OF NORTH CAROLINA
DEPARTMENT OF TRANSPORTATION
RALEIGH
SUPERSTRUCTURE
STRUCTURAL STEEL
DETAILS

SPAN B

REVISIONS				SHEET NO.	
NO.	BY:	DATE:	NO.	BY:	DATE:
1			3		
2			4		
					TOTAL SHEETS
					75



DocuSigned by:
viral a patel
1C157DE15D49494/19/2015

DRAWN BY : T. H. CARROLL DATE : 5/30/14
CHECKED BY : H. A. LOCKLEAR DATE : 10/6/14
DESIGN ENGINEER OF RECORD: V.A. PATEL DATE : 1/13/15